



FOR LEASE... 2,646 SQUARE FOOT OFFICE/RETAIL/MEDICAL

COLLINS POINT SHOPPING CENTER  
1711-1743 S. 15th STREET OZARK MISSOURI



**FOR INFORMATION CONTACT:**

A.L. "Skip" Liebman

[sliebman@reecescommercial.com](mailto:sliebman@reecescommercial.com)

417-849-3374

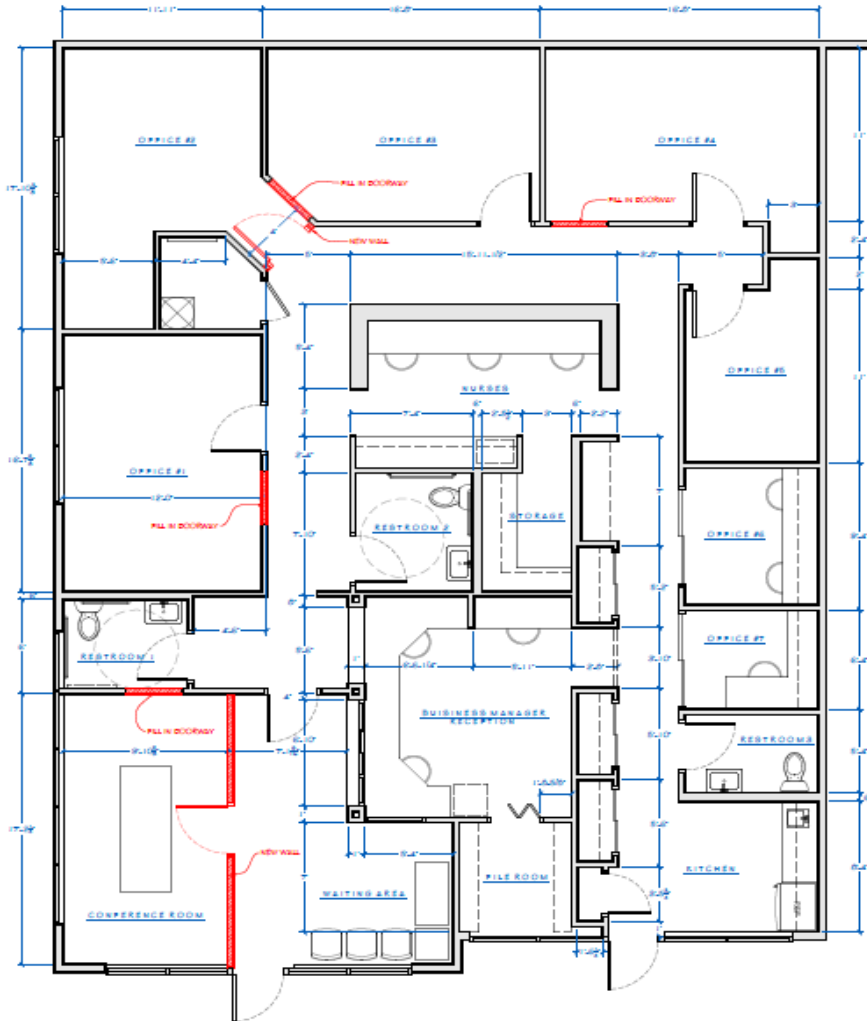
Keaton Snow

[keaton.snow@reecescommercial.com](mailto:keaton.snow@reecescommercial.com)

417-860-4995

DISCLAIMER: The information contained herein is not guaranteed as to completeness or accuracy, and is submitted without representation or warranty. You are urged to make your own analysis of the contents presented herein and to investigate and verify to your own satisfaction all factors having a bearing on your decision. It is further recommended that your Attorney and Accountant advise you on any and all legal and tax matters. Qualified Engineers and Tradesmen are recommended for determining questions on all physical aspects of site and improvements.

# COLLINS POINT CENTER... OFFICE OR RETAIL... SUITE 1741



## **COLLINS POINT HIGHLIGHTS**

- Office Complex. Formerly occupied by Access Hospice
- Space has 2,740 +/- rentable square feet
- Located in fast growing business district in Ozark ,Missouri
- Access to US Highway 65 main corridor between Springfield & Branson
- Excellent visibility, easy ingress/egress and front door parking
- Surrounded by local and national business, including Lowes, Walmart and Walgreens
- Current tenants include Rosie Jo's Café and State Farm Insurance

## **SUITE 1741 SUMMARY:**

Suite 1741 formerly occupied by Access Hospice. Landlord previously invested to update the space. Floor plan is designed for many businesses including medical. Collins Point is highly visible, offers plenty of drive-up parking with convenient access from U.S Hwy 65, the main corridor between Springfield and Branson, MO. Floorplan includes 7 offices, conference room, several shared work areas, 2 bathrooms, kitchenette, and more.

**Rent \$15.00 sq. ft. modified gross (MG) or \$3,425 monthly**

## **FOR INFORMATION CONTACT:**

A.L. "Skip" Liebman

sliebman@reececommercial.com

417-849-3374

Keaton Snow

keaton.snow@reececommercial.com

417-860-4995

# COLLINS POINT CENTER... OFFICE... RETAIL... MEDICAL... SUITE 1741



## FOR INFORMATION CONTACT:

A.L. "Skip" Liebman

Keaton Snow

[sliebman@reececommercial.com](mailto:sliebman@reececommercial.com)

[keaton.snow@reececommercial.com](mailto:keaton.snow@reececommercial.com)

417-849-3374

417-860-4995

FOR LEASE... COLLINS POINT CENTER SUITE 1725  
OFFICE/RETAIL/MEDICAL OZARK, MO



**FOR INFORMATION CONTACT:**

A.L. "Skip" Liebman

[sliebman@reececommercial.com](mailto:sliebman@reececommercial.com)

417-849-3374

Keaton Snow

[keaton.snow@reececommercial.com](mailto:keaton.snow@reececommercial.com)

417-860-4995

DISCLAIMER: The information contained herein is not guaranteed as to completeness or accuracy, and is submitted without representation or warranty. You are urged to make your own analysis of the contents presented herein and to investigate and verify to your own satisfaction all factors having a bearing on your decision. It is further recommended that your Attorney and Accountant advise you on any and all legal and tax matters. Qualified Engineers and Tradesmen are recommended for determining questions on all physical aspects of site and improvements.