

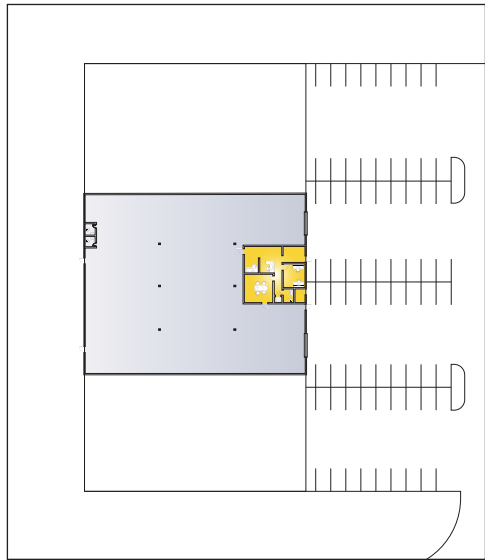


LAKEVIEW CENTER

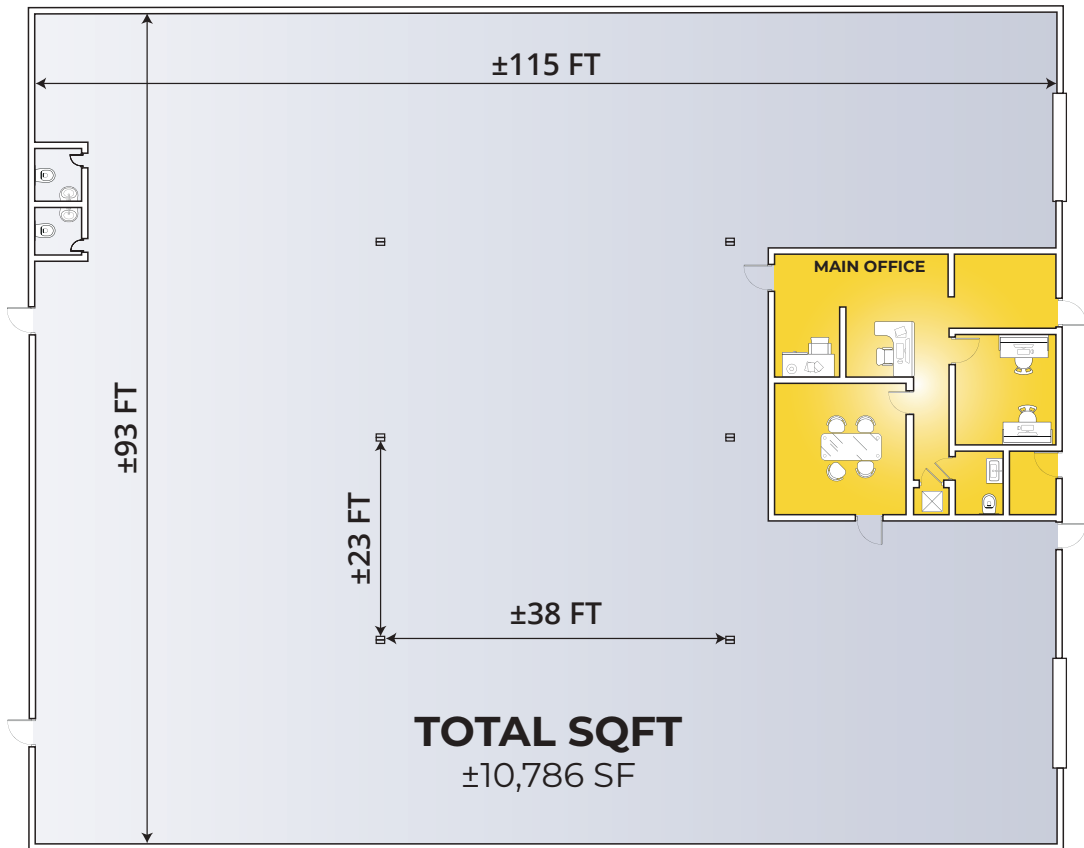
For Sublease ±10,786 SF
Exceptional Location & Access

2303 Stirling Rd | Fort Lauderdale, Florida 33312

SPACE DETAILS



MAIN SITE PLAN



LOCATION:

2303 STIRLING RD,
FT LAUDERDALE, FL 33312



TOTAL SF:

$\pm 10,786$ SF TOTAL



OFFICE SF:

± 850 SF OFFICE TOTAL



CEILING HEIGHTS:

$\pm 20'$ CLEAR CH



LOADING:

2 DH DOORS



**COLUMN
SPACING:**

23' X 38' COLUMN SPACING



PARKING:

± 36 PARKING SPACES



LEASE RATE:

\$15.25 PSF NNN



**OPERATING
EXPENSES:**

\$5.52 PSF



**SUBLEASE
EXPIRATION:**

DECEMBER 31, 2028



AVAILABILITY:

IMMEDIATE

AREA OVERVIEW

848

STIRLING RD
±0.2 MILE



95 INTERSTATE
±1.1 MILES



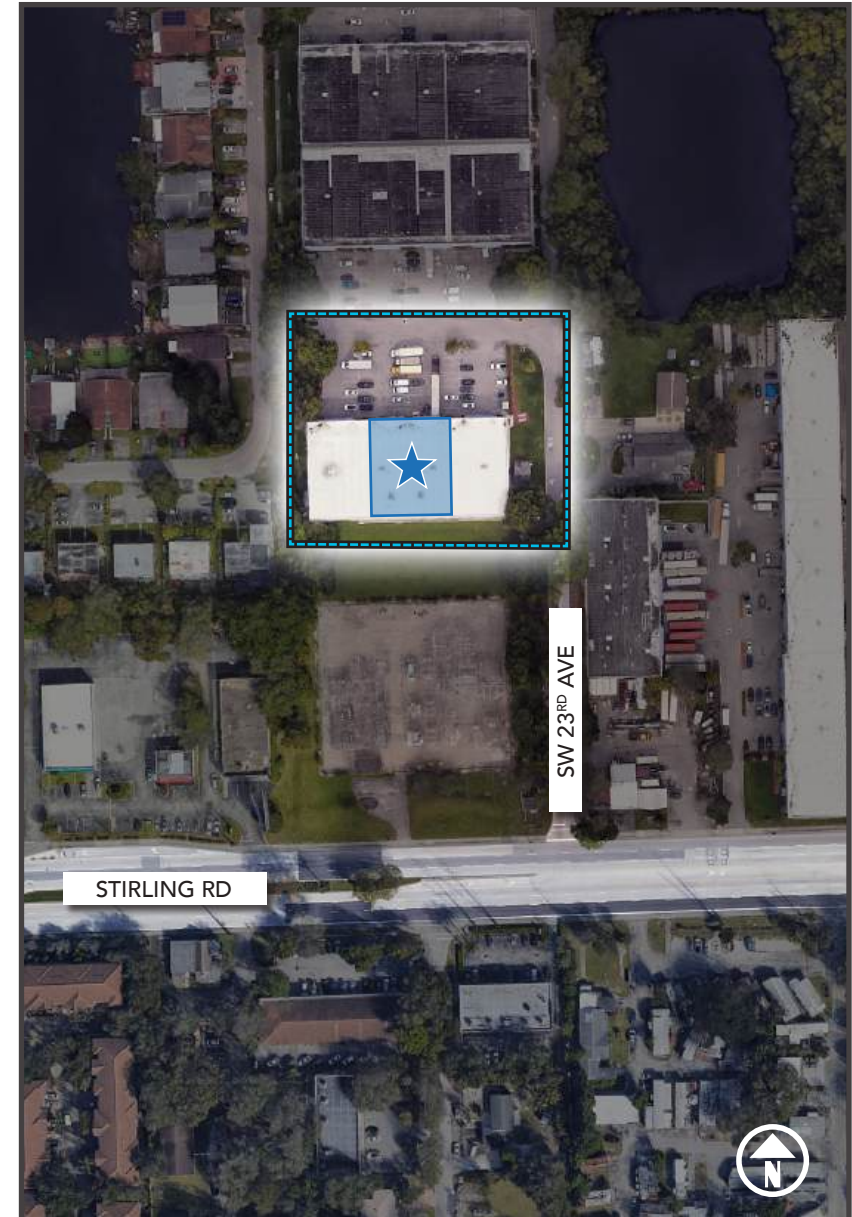
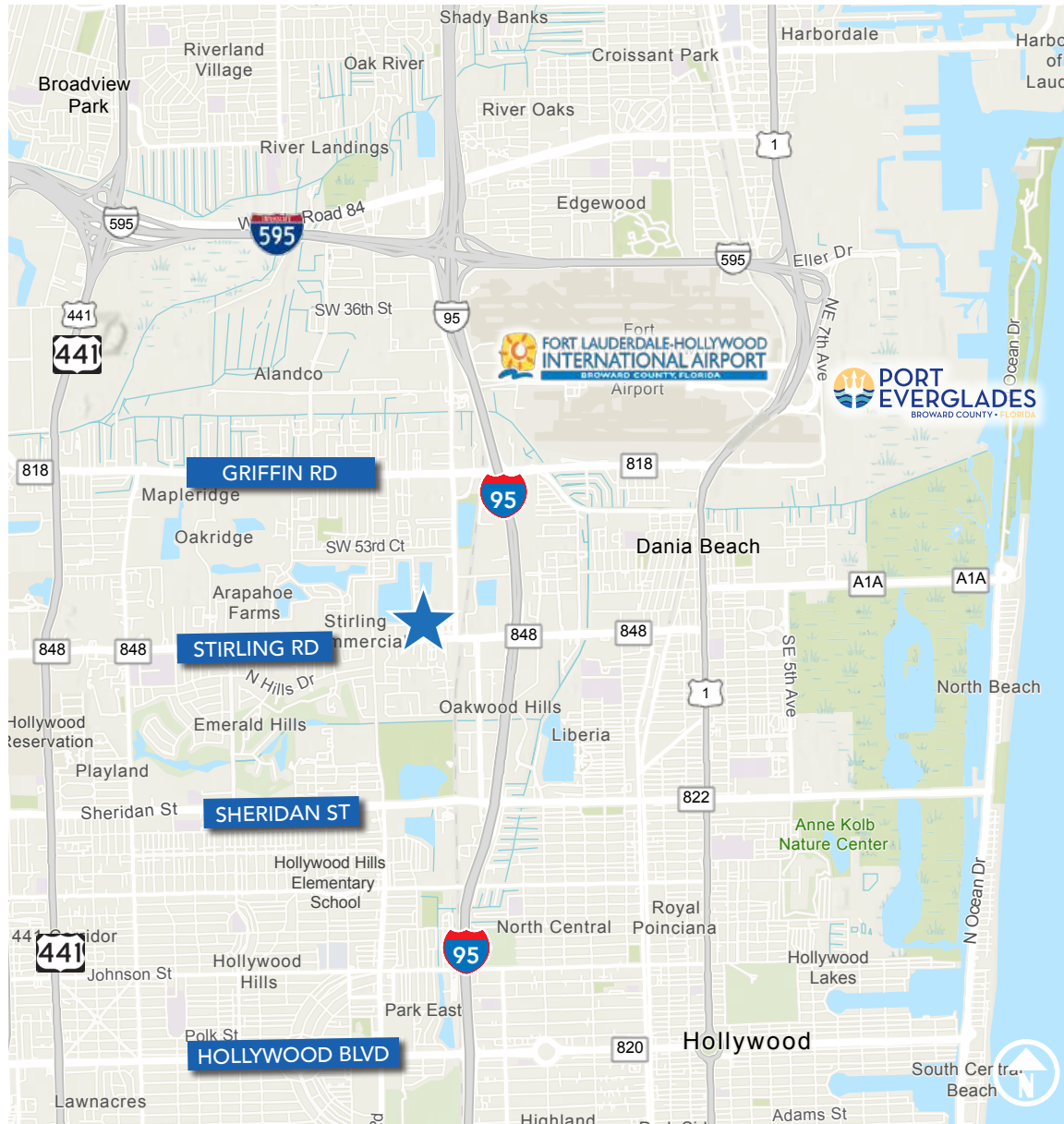
595 INTERSTATE
±3.5 MILES

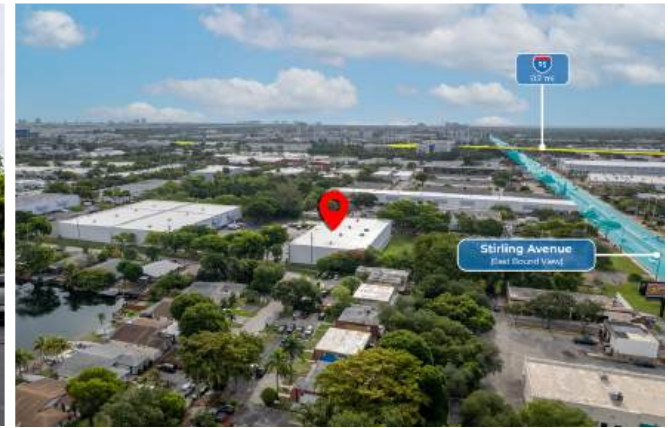


FT LAUDERDALE PORT
±6.0 MILES



FLL CARGO FACILITIES
±3.6 MILES





FOR MORE INFORMATION, CONTACT



WALTER BYRD
EXECUTIVE MANAGING DIRECTOR
305.808.7825
walter.byrd@transwestern.com

RYAN BURRESS
ASSOCIATE
305.357.3839
ryan.burress@transwestern.com

The information provided herein was obtained from sources believed reliable; however, Transwestern makes no guarantees, warranties or representations as to the completeness or accuracy thereof. The presentation of this property is submitted subject to errors, omissions, change of price or conditions, prior sale or lease, or withdrawal without notice. Copyright © 2025 Transwestern Licensed Real Estate Broker.

Transwestern Commercial Services Florida, LLC | 2 Alhambra Plz | Suite 1030 | Coral Gables, FL 33134

www.SFLindustrial.com