

# 173 Unit Approved Apartment Site

Copper Sky Regional Park -Maricopa



**Subject :** Copper Sky South

**Location:** Signalized intersection at the NEC of John Wayne Parkway & MLK Blvd

**Size:** 5.856 acres

**Utilities:** to the site

**Zoning:** General Mixed-Use District (MU-G).

**Unit Count:** 173 ( 391 units recommended by the planning department and council-see page 2)

**Traffic Count:** 6900 vpd North & South on John Way Parkway

**Demographics:**

Average Household Income: \$102,052

Total Housing units : 22,881

Estimated Population: 62,310

Total labor population: 48,489

Source of Demographics : Regis 2024

**Comments:**

- Available subject to final engineering
- Fully Improved and mass graded
- Significant flexibility on the ultimate density.
- Located within the Copper Sky Community Center campus.

Available due diligence items include ALTA survey, phase one environmental report, zoning and general plan amendment approval letter, 50 page feasibility report dated 7-23, 28 page PAD and DR narrative for Copper Sky Mix-use North and South dated 2-24

**TRACY GLASS**

Office: (602) 385-1549

Cell: (602)330-3201

[tglass@insightland.com](mailto:tglass@insightland.com)

*All information furnished regarding property for sale, rental or financing is from sources deemed reliable, but no warranty or representation is made to the accuracy thereof and same is subject to errors, omissions, change of price, rental or other conditions prior to sale, lease or financing or withdrawal without notice. No liability of any kind is to be imposed on the broker herein.*





Shortly after closing on the subject parcel in early 2022 the city of Maricopa approached ownership and asked for a significant increase in allowable density from what is currently allowed (173 units on 5.8 acres) to 391 units. This was based on city of Maricopa's request to provide enough housing for such an unprecedented population influx see below for details. Ownership accommodated the cities request for greater density and by February of 2024 submitted their project narrative for a PAD and Major Development Review Permit.

*In 2000 the town of Maricopa had a population of 1637 and in 2024 it swelled to 71,022 that 43 fold increase represents an annual population increase of 23%.*

<https://www.neilsberg.com/insights/maricopa-az-population-by-year/>



# Copper Sky Multifamily Mixed-Use Site

## PROPERTY LOCATION





# Copper Sky Multifamily Mixed-Use Site

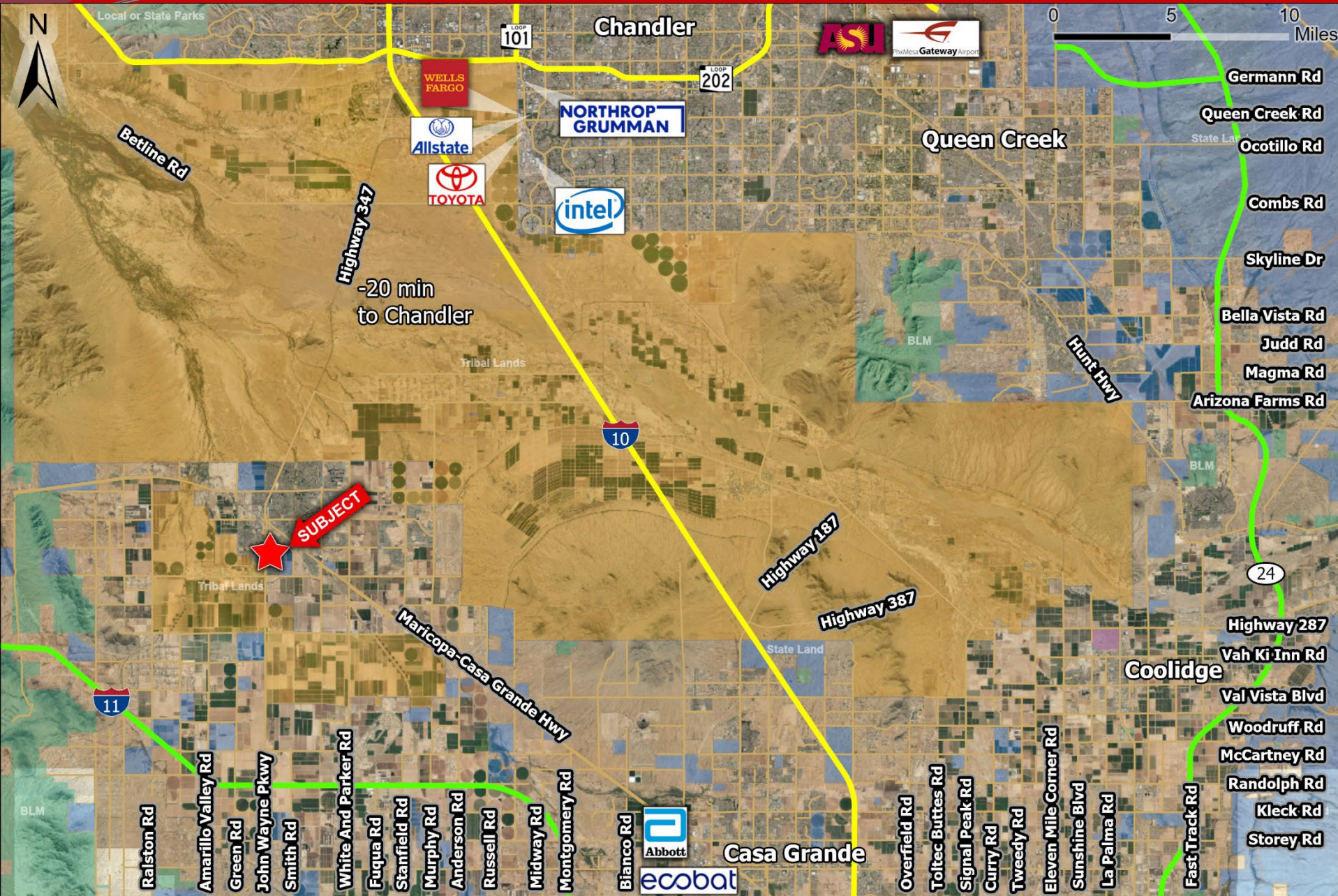
Copper Sky Regional Park- Maricopa, Az.





# Copper Sky Multifamily Mixed-Use Site

Copper Sky Regional Park- Maricopa, Az.





**KEY TO BOUNDARIES**

- City of Maricopa
- Ak-Chin Indian Community
- Major Interstate Highway
- State Highway
- Proposed Interstate Route
- Union Pacific Railroad

<http://www.akchin.com/>

**CHANDLER**

**PHOENIX** 26.7 miles

**LOS ANGELES** 460 miles

±35 minutes to Phoenix Sky Harbor International Airport

±25 minutes to Chandler Price Road Employment Corridor

**MARICOPA**

**SITE**

Ak-Chin Southern Dunes Golf Club

UltraStar Multi-Entertainment Center

Ak-Chin Circle

Harrah's Ak-Chin Casino

**AK-CHIN INDIAN COMMUNITY**

Ak-Chin Farms & Community Headquarters

**AK-CHIN INDIAN COMMUNITY**

AK-CHIN REGIONAL AIRPORT

ADOBE OFFICE SUITES

**MARICOPA-CASA GRANDE HWY**

**CASA GRANDE**

±45 minutes to Lucid Motors Final County Electrical Vehicle Corridor

**TUCSON** 80 miles

**NOGALES, MEXICO** 148 miles

**EL PASO, TEXAS** 398 miles

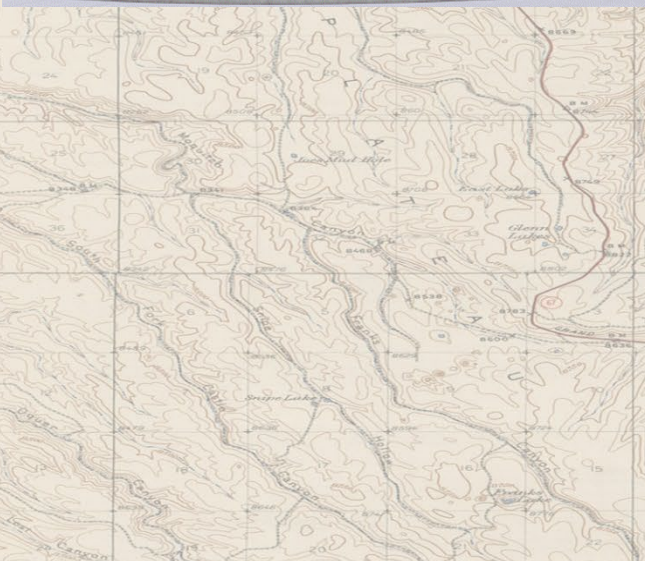
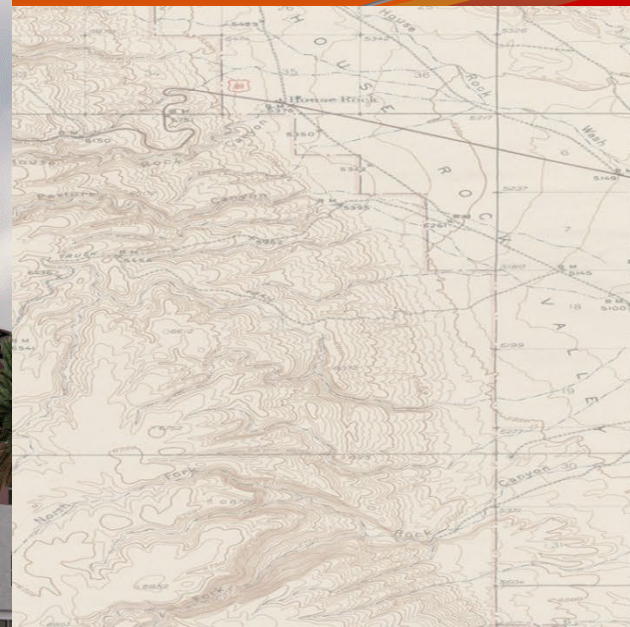
**ARIZONA**

**AREA OF ENLARGEMENT**

**MILES** 0 1 5 10



# Subject Renderings





CITY OF  
**MARICOPA**  
PROUD HISTORY • PROSPEROUS FUTURE



## Maricopa at a Glance

Maricopa offers residents and businesses the experience of a small-town atmosphere that is within a short distance to two major metropolitan areas.

- Maricopa is Arizona's 88th municipality, incorporated on October 15, 2003.
- The City's population is approximately 62,000. That is a 42.5% increase over 2010 Census Numbers.
  - Median Age = 33
  - Heads of Households with Bachelor's Degree or Higher = 65.2%
  - Average Household Income = \$86,000
- Maricopa is approximately 43 square miles, with a planning area of 233 square miles.

## Ranking

- 🎓 #1 Most Diverse School District in the Phoenix Area (Niche.com - 2022)
- 🏠 #1 Best Place to Raise a Family (HomeSnack.net - 2020)
- 🏛️ #3 Fastest Growing Cities (HomeSnack.net - 2021)
- 👤 #4 Most Diverse Suburbs in Arizona (Niche.com - 2021)
- 🌳 #4 Safest Cities in Arizona (Alarms.org - 2021)
- 🏡 #9 Regions New Home Closings Surge (RL Brown - 2019)
- 🛡️ #9 Safest Cities in Arizona (Safewise.com - 2021)
- 🏠 #8 Best Suburb to Buy a House in Phoenix (Niche.com - 2021)
- 📍 #8 Best Places to Live in Arizona (AreaVibes.com - 2021)



## COPPER SKY RECREATIONAL COMPLEX

The senior housing site is situated directly next door to the Copper Sky Recreational Complex, a brand-new state of the art sporting, fitness and recreation center for the city of Maricopa. Comprised of the Copper Sky Multigenerational Center and the Copper Sky Regional Park, this expansive recreational development offers state-of-the-art equipment, grand green spaces and fantastic programs designed to enhance Maricopa residents' quality of life. The complex serves as the premier workout facility in the City of Maricopa.

### AQUATIC CENTER

The Copper Sky Aquatic Center is a fun filled outdoor swim and sun oasis. The center features an eight-lane, 25-yard lap pool with diving boards; a leisure pool with a waterslide, rock-climbing wall and lazy river; and an interactive splash pad for the little kids that is currently under construction. The lap pool is heated and available for year-round use for the public or with a Copper Sky membership. We have lots of activities that happen here whether it is swim lessons, master swim, or birthday parties.

