



For Lease

Available:
12,128
Square Feet

Build-to-Suit Opportunity Northeast Fresno, CA

Professional Office Space Available for Sale or Lease

Building Details

- Location: Located on the west side of Fresno Street along Fir Avenue
- Available: 12,128 SF single story building
- Rental Rate: See Broker for details
- Purchase Price: See Broker for details
- TI Allowance: Negotiable, see Broker for details
- Parking: Approximately 4.1 stalls per 1,000 square foot ratio
- Excellent Northeast Fresno Location
- Located near Kaiser Permanente and Saint Agnes Medical Center
- Ideal Access to/from Freeway 41

Bobby Fena, SIOR
559 256 2436
bobby.fena@colliers.com
CA DRE #00590204

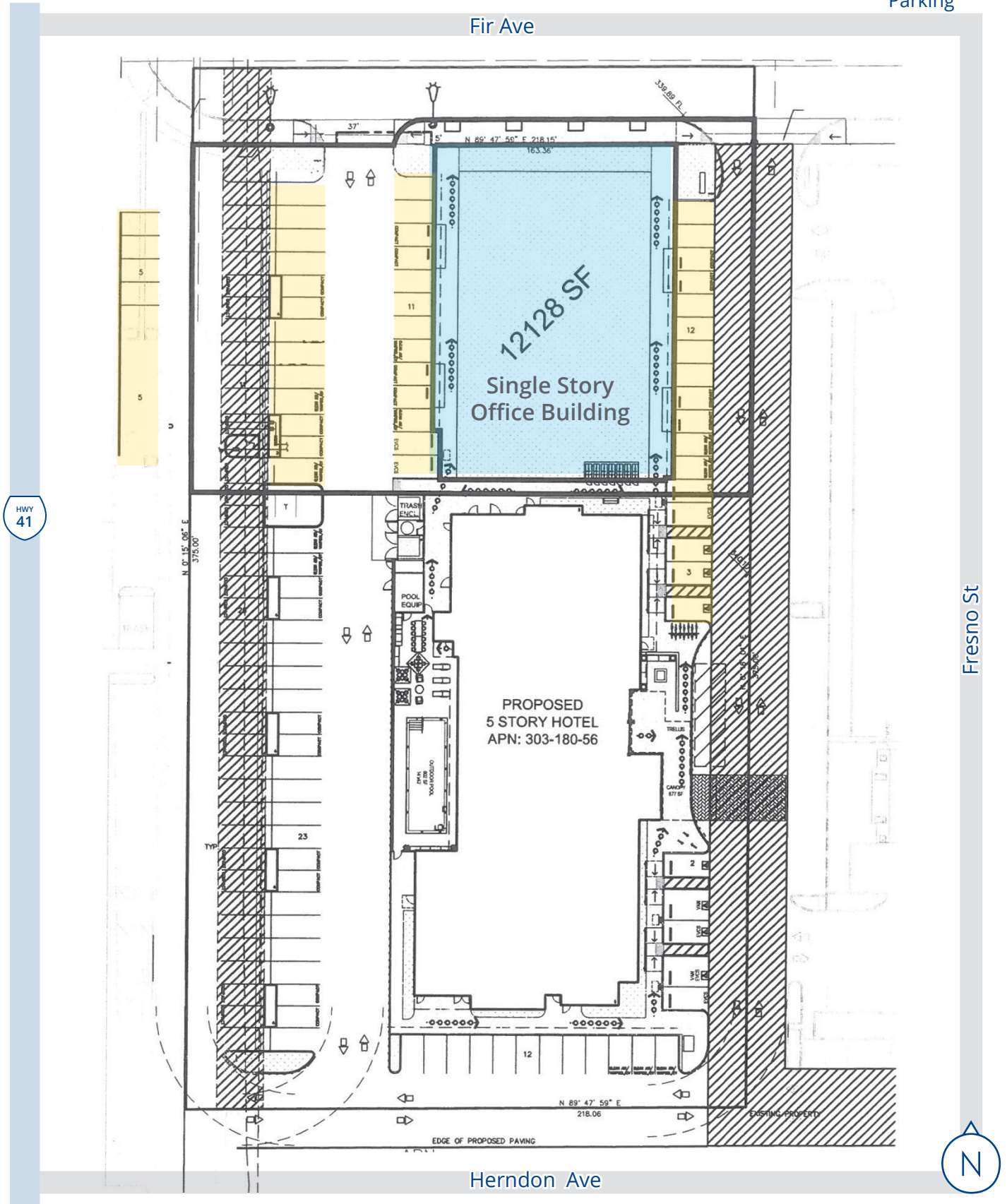
Beau Plumlee
559 256 2443
beau.plumlee@colliers.com
CA DRE #01269167

Colliers International
7485 N. Palm Avenue, #110
Fresno, CA 93711
P: 559 221 1271
F: 559 222 8744
www.colliers.com/fresno

Site Plan

NWC Herndon Avenue and Fresno Street, Fresno, California

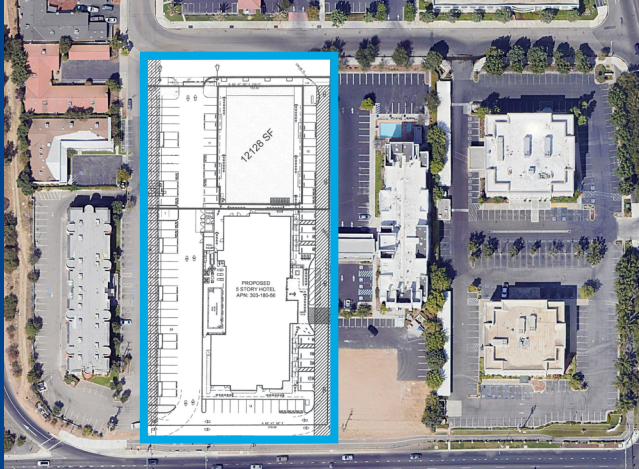
Office Building
Parking



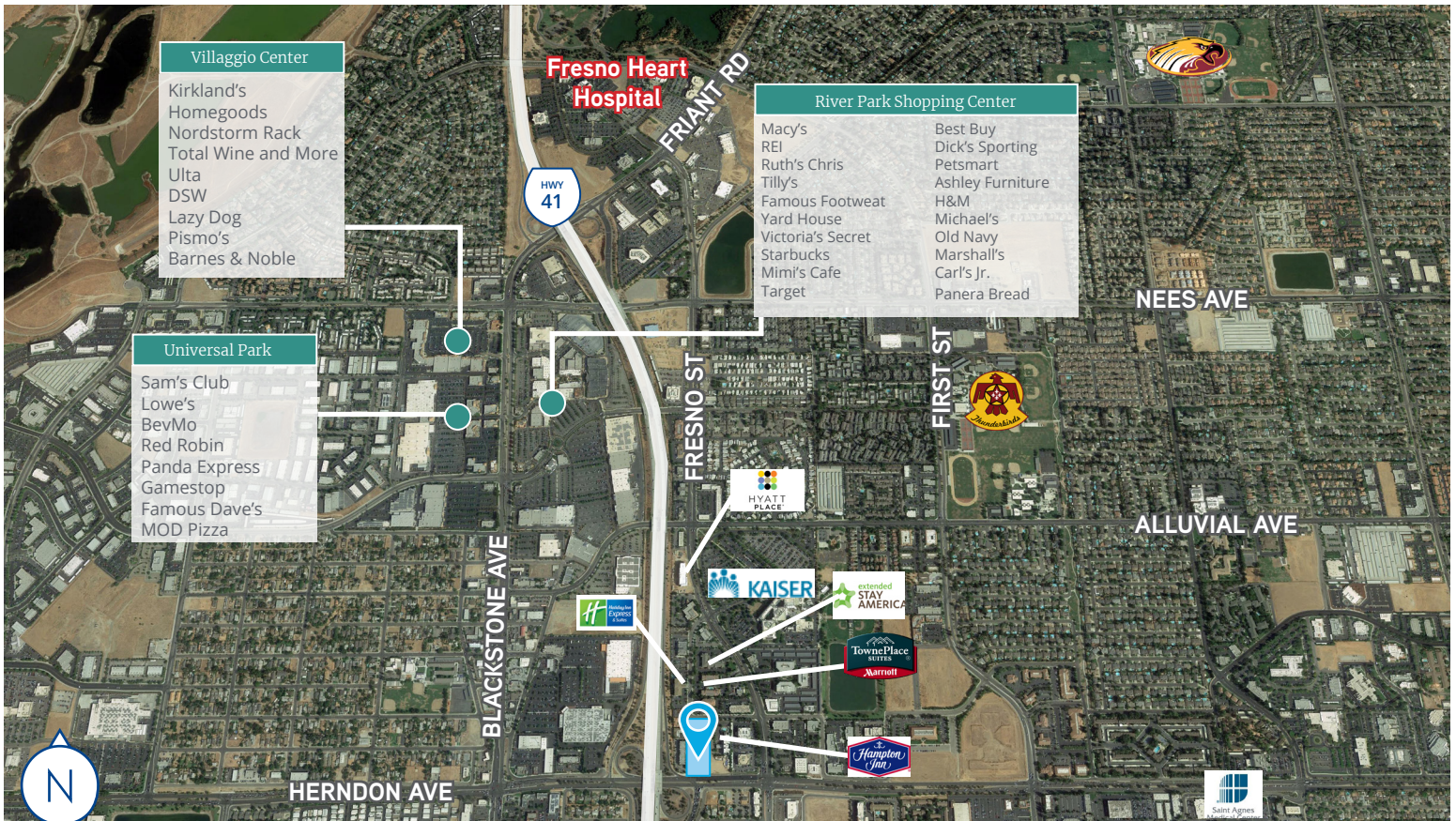
Aerial

Professional Office Space, Fresno, California

NWC Herndon Ave. and Fresno St.



Build-to-Suit Opportunity
 ±12,128 SF Available
 Single Story Office Building
 Available for Sale or Lease



- Villaggio Center**
- Kirkland's
 - Homegoods
 - Nordstorm Rack
 - Total Wine and More
 - Ulta
 - DSW
 - Lazy Dog
 - Pismo's
 - Barnes & Noble

- Universal Park**
- Sam's Club
 - Lowe's
 - BevMo
 - Red Robin
 - Panda Express
 - Gamestop
 - Famous Dave's
 - MOD Pizza

Fresno Heart Hospital

- River Park Shopping Center**
- Macy's
 - REI
 - Ruth's Chris
 - Tilly's
 - Famous Footwear
 - Yard House
 - Victoria's Secret
 - Starbucks
 - Mimi's Cafe
 - Target
 - Best Buy
 - Dick's Sporting
 - Petsmart
 - Ashley Furniture
 - H&M
 - Michael's
 - Old Navy
 - Marshall's
 - Carl's Jr.
 - Panera Bread

Bobby Fena, SIOR
 559 256 2436
 bobby.fena@colliers.com
 CA DRE #00590204

Beau Plumlee
 559 256 2443
 beau.plumlee@colliers.com
 CA DRE #01269167

7485 N. Palm Avenue, Suite 110
 Fresno, CA 93711
 P: 559 221 1271
 F: 559 222 8744

