

2014 PALMETTO AVE

PACIFICA, CA 94044

OFFICE/RETAIL BUILDING
FOR SALE



FOR MORE INFORMATION, PLEASE CONTACT

BRETT BARRON

650.437.5223
brettbarron@capitalrealtygrp.com
CalDRE #00893787

BRITTANY BARRON SALEEM

650.773.2022
Brittany@capitalrealtygrp.com
CalDRE #02209599



CONFIDENTIALITY AND DISCLAIMER

TEXT HEADLINE

The information contained in the following Marketing Brochure is proprietary and strictly confidential. It is intended to be reviewed only by the party receiving it from Capital Realty Group and should not be made available to any other person or entity without the written consent of Capital Realty Group. This Marketing Brochure has been prepared to provide summary, unverified information to prospective purchasers, and to establish only a preliminary level of interest in the subject property. The information contained Herein is not a substitute for thorough due diligence investigation. Capital Realty Group has not made any investigation, and makes no warranty or representation, with respect to the income or expenses for the subject property, the future projected financial performance of the property, the size and square footage of the property and improvements, the presence or absence of contaminating substances, PCB's or asbestos, the compliance with State and Federal regulations, the physical condition of the improvements there on, or the financial condition or business prospects of any tenant, or any tenant's plans or intentions to continue its occupancy of the subject property. The information contained in this Marketing Brochure has been obtained from sources we believe to be reliable; however, Capital Realty Group has not verified, and will not verify, any of the following information contained herein, nor has Capital Realty Group conducted any investigation regarding these matters and makes no warranty or representation, whatsoever regarding the accuracy or completeness of the information provided. All potential buyers must take appropriate measures to verify all the information set forth herein.

FOR MORE INFORMATION, PLEASE CONTACT

BRETT BARRON

650.437.5223

brettbarron@capitalrealtygrp.com

CalDRE #00893787

BRITTANY BARRON SALEEM

650.773.2022

Brittany@capitalrealtygrp.com

CalDRE #02209599



PROPERTY SUMMARY



PROPERTY DESCRIPTION

Ideal for the savvy investor or owner/user, 2014 Palmetto Ave presents a prime opportunity. This 2,800 SF building encompasses 4 distinct units, offering potential for versatile use and income streams. With long-term tenants in place, this property provides stability and a reliable income stream for the future. Zoned CL00C1, this property is strategically situated in the sought-after Pacifica area, guiding investors and owner/users toward a promising future. With its classic charm and functional layout, this property is a compelling prospect for those seeking a solid office/retail investment or seeking to occupy the space for their own use.

PROPERTY HIGHLIGHTS

- 2,800 SF building with 4 units
- Charming 1935 construction
- Zoned CL00C1 for commercial use
- Prime location in Pacifica, CA
- Ideal for investor or owner use
- Versatile space for various business needs
- Well-maintained and attractive exterior
- Ample parking for tenants and visitors

OFFERING SUMMARY

Sale Price:	\$1,295,000
Lot Size:	9,725 SF
Building Size:	2,800 SF
NOI:	\$58,108.25
Cap Rate:	4.49%

FOR MORE INFORMATION, PLEASE CONTACT

BRETT BARRON

650.437.5223
brettbarron@capitalrealtygrp.com
CalDRE #00893787

BRITTANY BARRON SALEEM

650.773.2022
Brittany@capitalrealtygrp.com
CalDRE #02209599



LOCATION OVERVIEW



TEXT HEADLINE

While Pacifica feels worlds apart from the densely populated attractions along the west coast, the destination is easily accessible from Highway 1 and convenient to SFO and San Jose International Airport. Its rich cultural heritage and intriguing bohemian personality make Pacifica a unique getaway worth discovering. Once visitors arrive, they are treated to a bounty of cool things to do and see, ranging from the panoramic vistas atop the 100+ miles of hiking and biking trails to the expansive beaches dotting Pacifica's shoreline. Visitors also enjoy being lulled to sleep by the sound of the Pacific Ocean or watching the sun set over the horizon during an enchanting meal.

FOR MORE INFORMATION, PLEASE CONTACT

BRETT BARRON

650.437.5223
brettbarron@capitalrealtygrp.com
CalDRE #00893787

BRITTANY BARRON SALEEM

650.773.2022
Brittany@capitalrealtygrp.com
CalDRE #02209599



INCOME & EXPENSES

INCOME SUMMARY	CURRENT	PRO FORMA
GROSS INCOME	\$88,848	\$108,000
EXPENSES SUMMARY	CURRENT	PRO FORMA
Cleaning & Maintenance	\$1,010	\$1,010
Gas & Electric	\$420	\$420
Water	\$474	\$474
Property Insurance	\$5,419	\$5,419
Property Management	\$6,000	\$6,000
Property Taxes New (1.165%)	\$17,417	\$17,417
OPERATING EXPENSES	\$30,740	\$30,740
NET OPERATING INCOME	\$58,108	\$77,260

FOR MORE INFORMATION, PLEASE CONTACT

BRETT BARRON

650.437.5223

brettbarron@capitalrealtygrp.com

CalDRE #00893787

BRITTANY BARRON SALEEM

650.773.2022

Brittany@capitalrealtygrp.com

CalDRE #02209599



RENT ROLL

SUITE	TENANT NAME	MARKET RENT	MONTHLY RENT	LEASE END
A	Vintage Cove	\$2,000	\$2,000	Month to Month
B	Hsu Optometry	\$2,000	\$1,250	12/31/2028
C	Daniel Smith	\$2,500	\$1,654	8/31/2027
D	Service Master	\$2,500	\$2,500	Month to Month
TOTALS		\$9,000	\$7,404	

* Unit B rental escalations as follows: \$1250 per month for 2025, \$1350 per month for 2026, \$1450 per month for 2027, \$1600 for 2028. Unit C has a one year option to extend commencing 9/1/2025 with rental rate of \$1654 per month.

FOR MORE INFORMATION, PLEASE CONTACT**BRETT BARRON**

650.437.5223

brettbarron@capitalrealtygrp.com

CalDRE #00893787

BRITTANY BARRON SALEEM

650.773.2022

Brittany@capitalrealtygrp.com

CalDRE #02209599



FLOOR PLANS



FOR MORE INFORMATION, PLEASE CONTACT

BRETT BARRON

650.437.5223

brettbarron@capitalrealtygrp.com

CalDRE #00893787

BRITTANY BARRON SALEEM

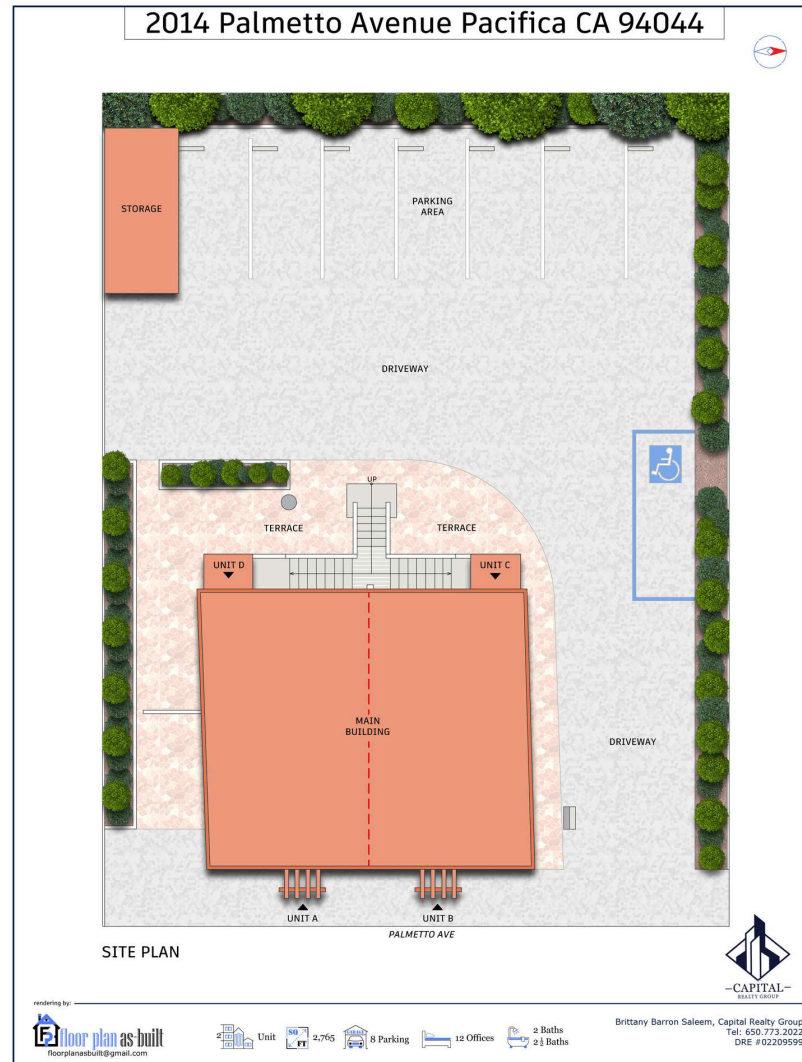
650.773.2022

Brittany@capitalrealtygrp.com

CalDRE #02209599



SITE PLANS



FOR MORE INFORMATION, PLEASE CONTACT

BRETT BARRON

650.437.5223

brettbarron@capitalrealtygrp.com

CalDRE #00893787

BRITTANY BARRON SALEEM

650.773.2022

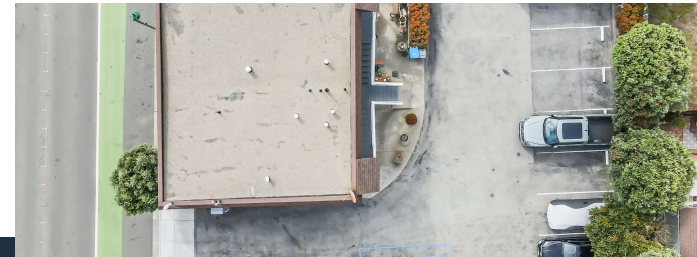
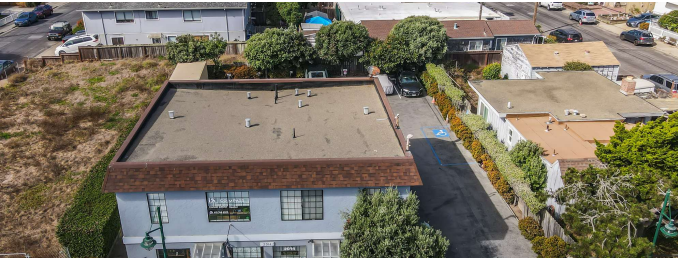
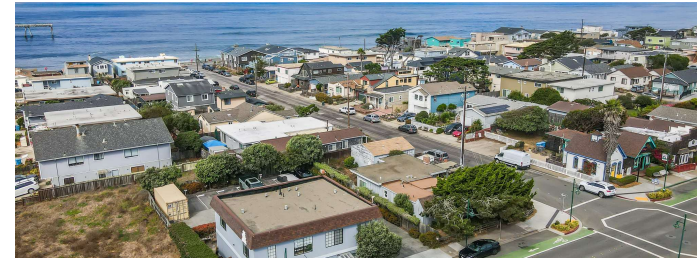
Brittany@capitalrealtygrp.com

CalDRE #02209599



ADDITIONAL PHOTOS

2014 PALMETTO AVE, PACIFICA CALIFORNIA



FOR MORE INFORMATION, PLEASE CONTACT

BRETT BARRON

650.437.5223

brettbarron@capitalrealtygrp.com

CalDRE #00893787

BRITTANY BARRON SALEEM

650.773.2022

Brittany@capitalrealtygrp.com

CalDRE #02209599

