



826
BROADWAY
THE STRAND BUILDING
GREENWICH VILLAGE

Location

Northeast corner of 12th Street and Broadway

Premises

Entire 6th floor
Entire 10th floor

Term

3-10 years

12,700 RSF

12,700 RSF

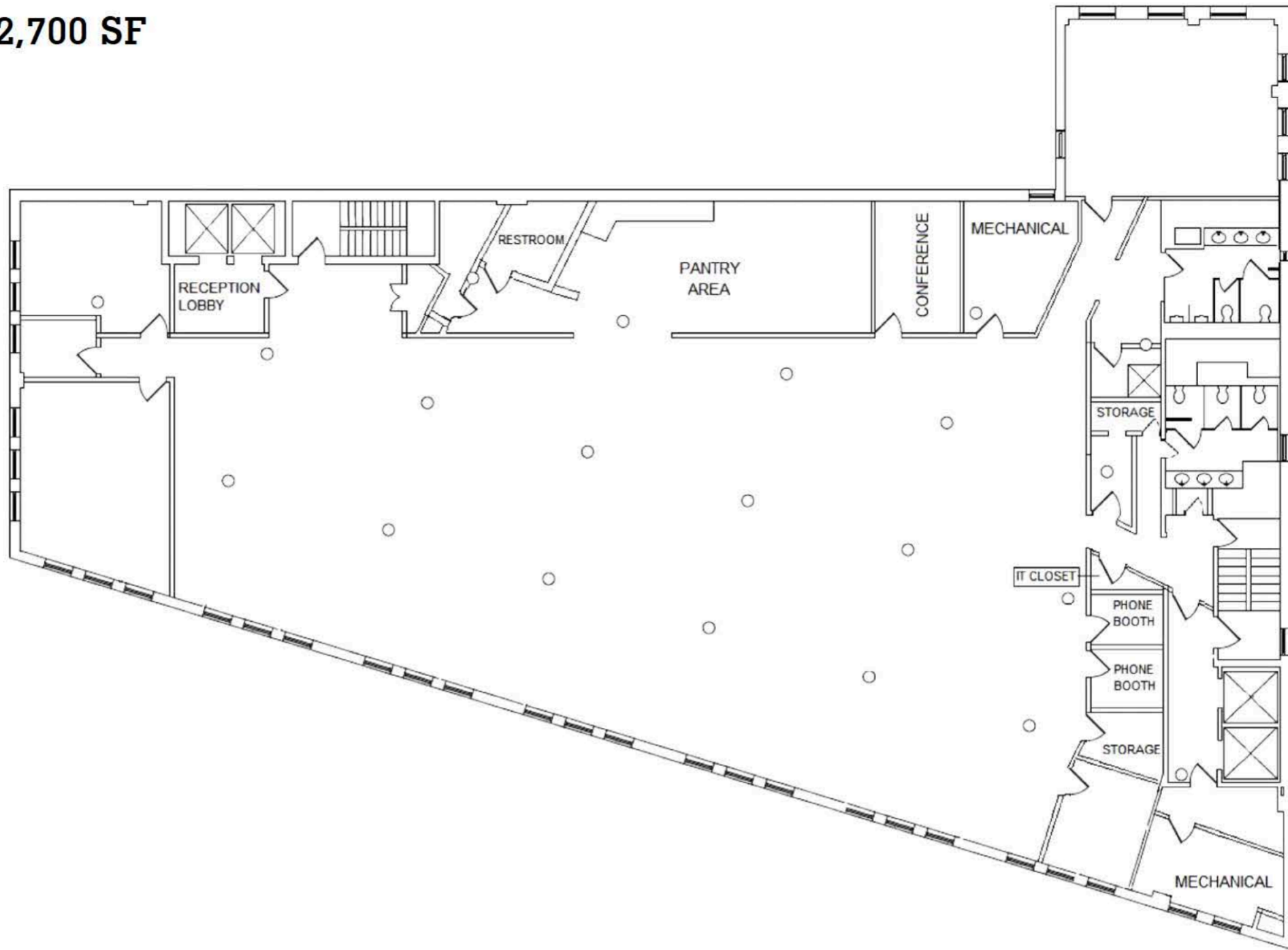
Availability

Immediate

 **LEE &
ASSOCIATES**

6th Floor

12,700 SF



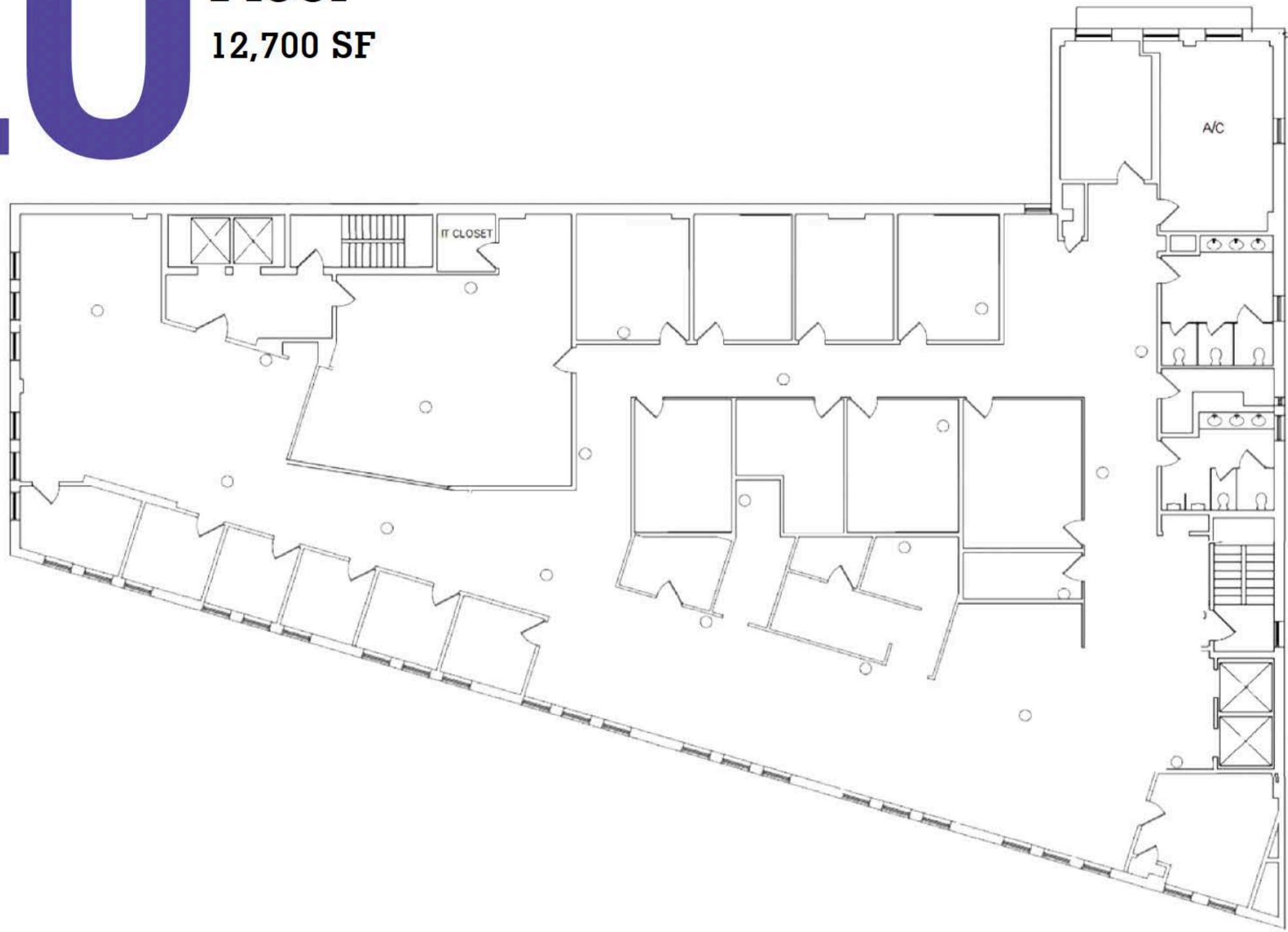
6th floor highlights:

- Furniture available
- Bright space with southern and western exposures
- Installation includes:
 - 2 conference rooms
 - 12-14 person conference room
 - 6 person conference room
 - 2 private offices
 - 3 huddle/ phone rooms
- Large area for additional open seating or to create additional offices
- Café style pantry with seating
- Large open area
- Hardwood floors
- Exposed ceilings
- 30 tons of tenant-controlled A/C
- Private bathrooms with shower



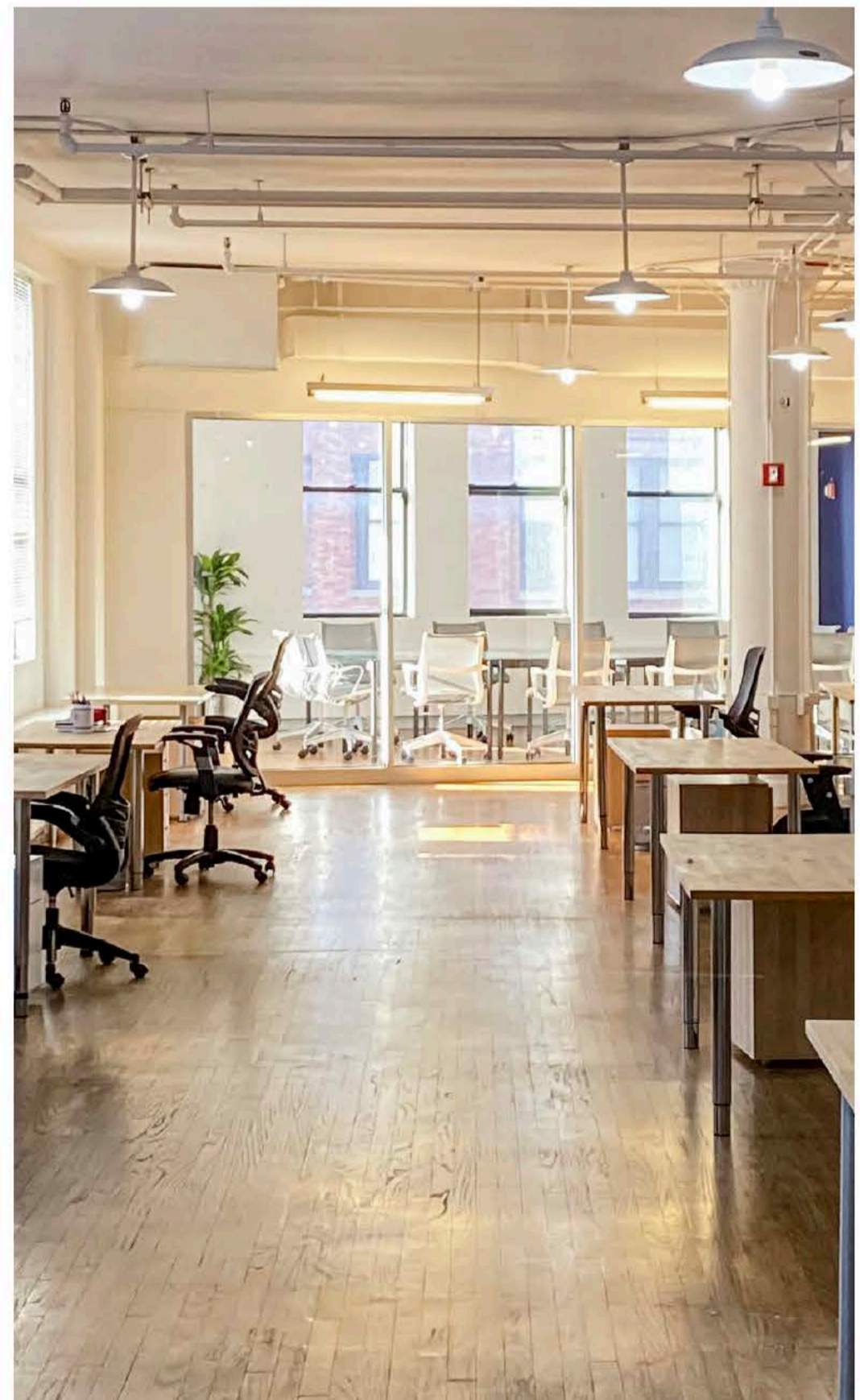
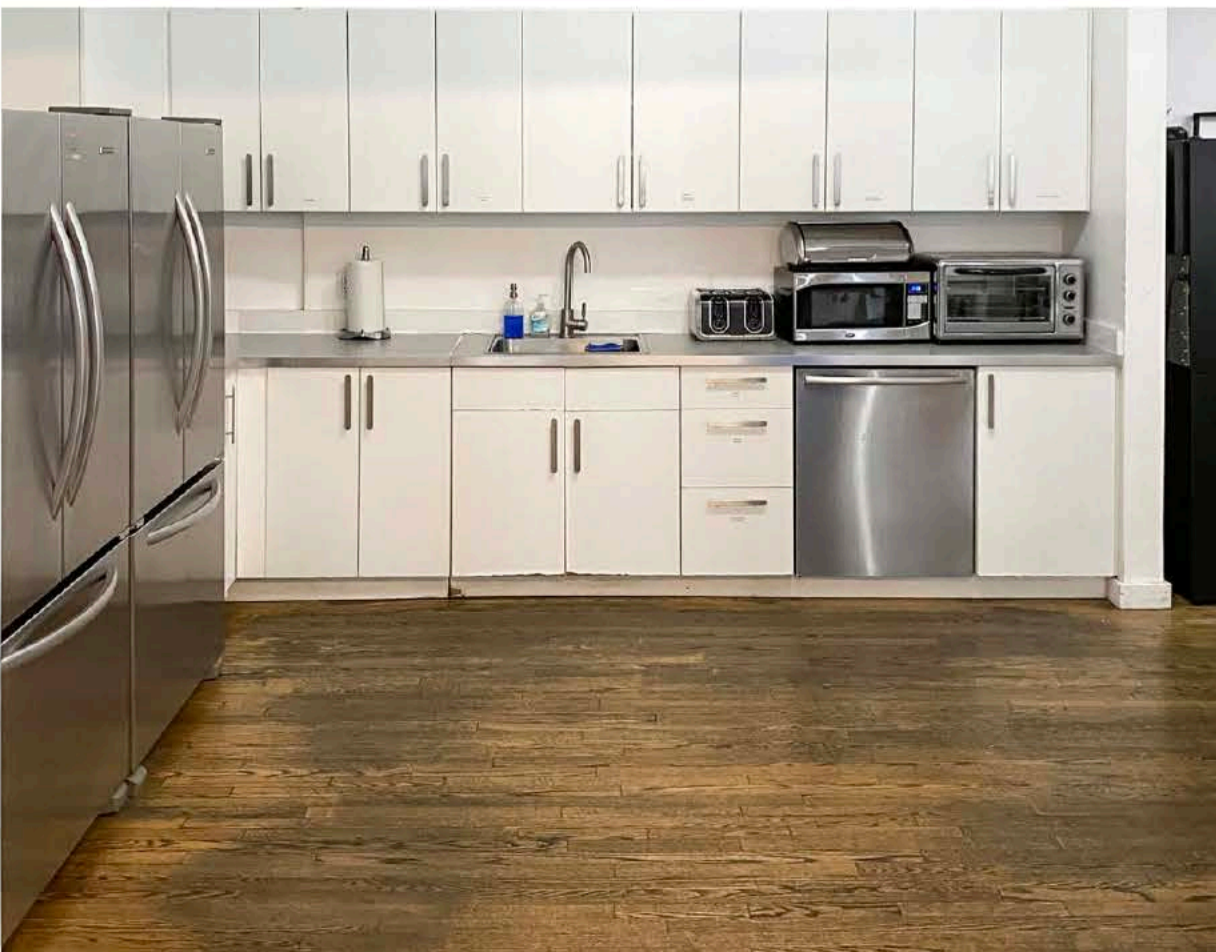
10th Floor

12,700 SF




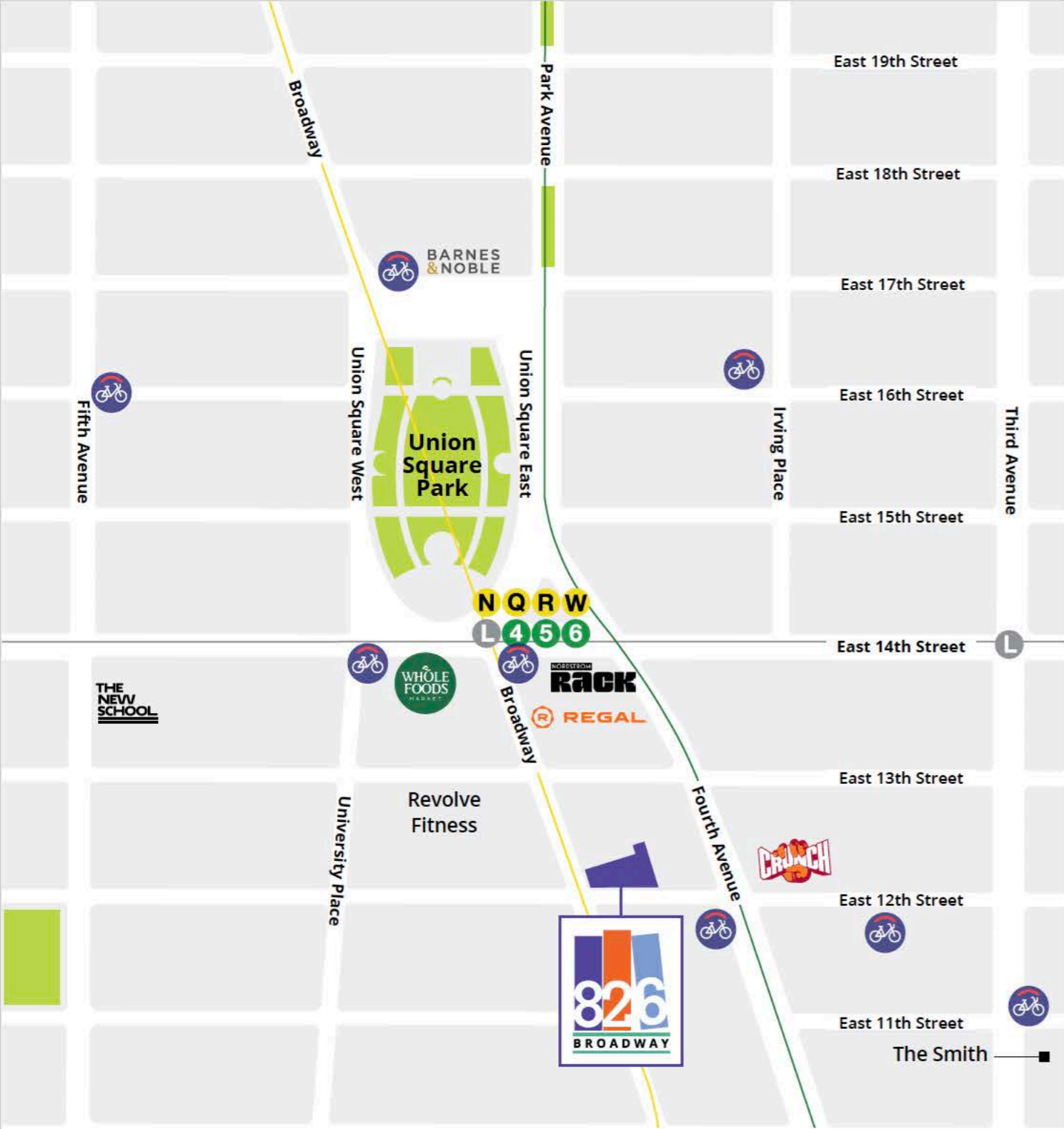
10th floor highlights:

- 14 private offices/ meeting rooms
- 2 conference rooms (10-12 person)
- Open area
- Hardwood floors
- Tenant-controlled A/C
- Pantry
- Private bathrooms



Building and area highlights

- Home of the renowned Strand Bookstore
- Located two blocks south from Union Square Park and Union Park subway station with service the following: **4 5 6 L N Q R W**
- Accessible to multiple  locations
- 24-hour access with full time superintendent and marble lobby
- Recently replaced windows
- 11-feet-6-inch ceiling heights
- Tenant-controlled AC



826
BROADWAY
 THE STRAND BUILDING
 GREENWICH VILLAGE



Get more information:

Todd Korren | Principal
 D 212 776 1283 | M 516 735 8556
 tkorren@lee-associates.com

All information supplied is from sources deemed reliable and is furnished subject to errors, omissions, modifications, removal of the listing for sale or lease, and to any listing conditions, including the rates and manner of payment of commissions for particular offerings imposed by principals or agreed by this Company, the terms of which are available to principals or duly licensed brokers. Any square footage dimensions set forth are approximate.