

# PROPERTY FEATURES



## BUILDING SIZE

±3,826 sq.ft.



## LOT SIZE

±39,991 sq.ft. (±0.92 Acres)



## ZONING

Commercial Heavy (Per City of San Bernardino)

## PARCELS

APN #: 0136-201-76-0000

# PROPERTY HIGHLIGHTS

- ±3,826 SF Building (Office)
- ±700 SF Shop Space
- Fully Paved, Gated, and Illuminated Yard
- Power Distributed Throughout Yard
- ±1,500 Gallon Gas/Diesel Tank
- Suitable for a Contractor's Yard (Verify)
- Additional access from S. Pershing Avenue
- 0.8 Miles from I-215 Mill St. On/Off Ramp, minutes from I-10 and I-210 freeways

# FOR LEASE

**385 S. Arrowhead Ave.,**  
San Bernardino, CA 92408

S Arrowhead Ave

N



**INLAND EMPIRE**

CAL DRE # 02120868

KW COMMERCIAL  
3595-1 Inland Empire Blvd. Suite 1250  
Ontario, CA 91764  
909.980.6868

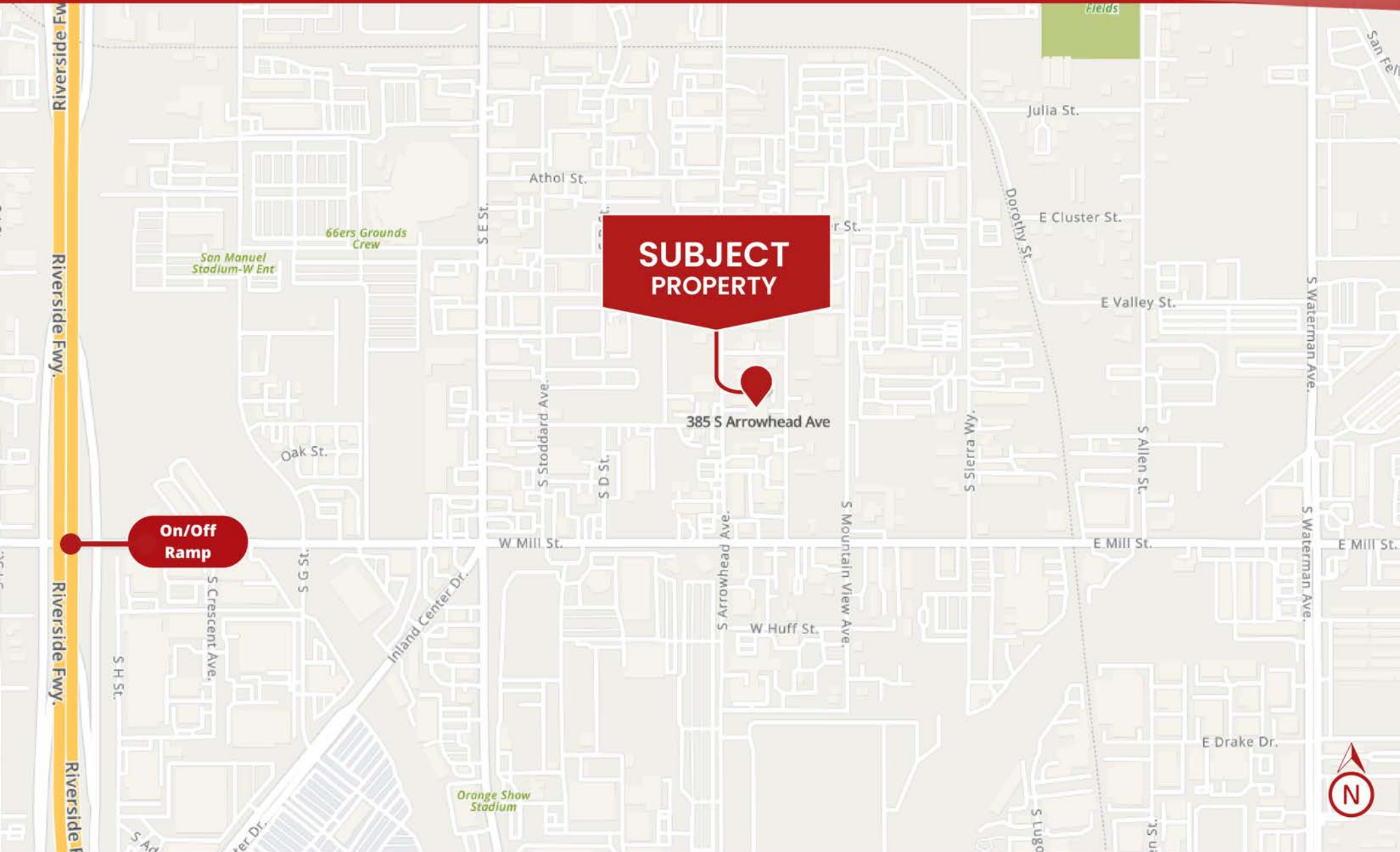
**Rene Ramos, Jr.**  
909.980.6868  
Rene.Ramos@kwcommercial.com  
CalDRE Lic. #01836872

**Jacob B. Bernardy**  
909.935.0935  
Jacob.Bernardy@kwcommercial.com  
CalDRE Lic. #02039512

**Robert D. Bagley III**  
909.935.0938  
Robert.Bagley@kwcommercial.com  
CalDRE Lic. #02131874

**Daniel W. Richards**  
909.243.7747 x 222  
Daniel.Richards@kwcommercial.com  
CalDRE Lic. #00803221

WE OBTAINED THE INFORMATION ABOVE FROM SOURCES WE BELIEVE TO BE RELIABLE. HOWEVER, WE HAVE NOT VERIFIED ITS ACCURACY AND MAKE NO GUARANTEE, WARRANTY, OR REPRESENTATION ABOUT IT. IT IS SUBMITTED SUBJECT TO THE POSSIBILITY OF ERRORS, OMISSIONS, CHANGE OF PRICE, RENTAL OR OTHER CONDITIONS, PRIOR SALE, LEASE OR FINANCING, OR WITHDRAWAL WITHOUT NOTICE. WE INCLUDE PROJECTIONS, OPINIONS, ASSUMPTIONS OR ESTIMATES FOR EXAMPLE ONLY, AND THEY MAY NOT REPRESENT CURRENT OR FUTURE PERFORMANCE OF THE PROPERTY. YOU AND YOUR TAX AND LEGAL ADVISORS SHOULD CONDUCT YOUR OWN INVESTIGATION OF THE PROPERTY AND TRANSACTION.



Rene Ramos, Jr.  
 909.980.6868  
 Rene.Ramos@kwcommercial.com  
 CalDRE Lic. #01836872

Jacob B. Bernardy  
 909.935.0935  
 Jacob.Bernardy@kwcommercial.com  
 CalDRE Lic. #02039512

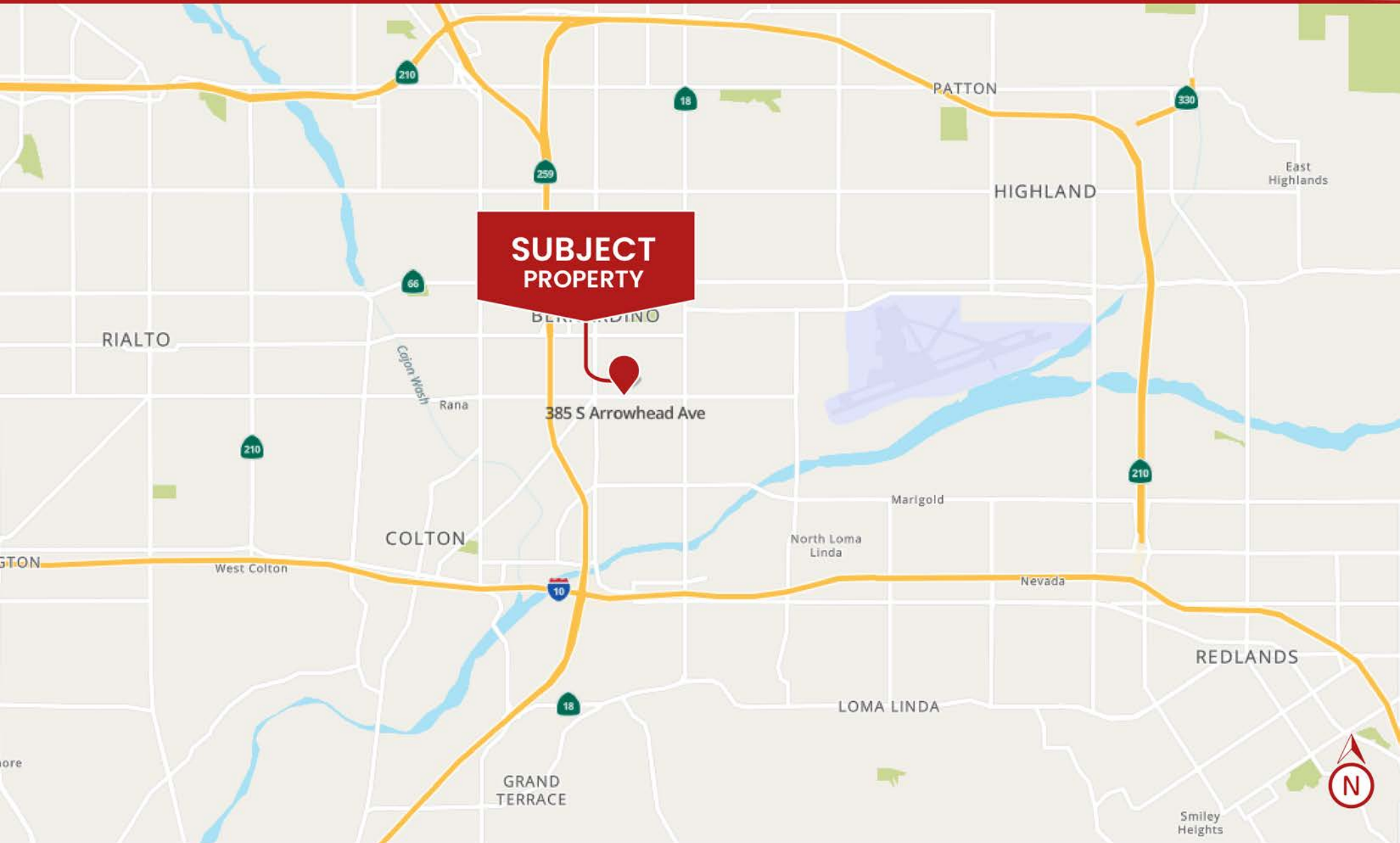
Robert D. Bagley III  
 909.935.0938  
 Robert.Bagley@kwcommercial.com  
 CalDRE Lic. #02131874

Daniel W. Richards  
 909.243.7747 x 222  
 Daniel.Richards@kwcommercial.com  
 CalDRE Lic. #00803221



**INLAND  
 EMPIRE**

**CAL DRE # 02120868**



Rene Ramos, Jr.  
909.980.6868  
Rene.Ramos@kwcommercial.com  
CalDRE Lic. #01836872

Jacob B. Bernardy  
909.935.0935  
Jacob.Bernardy@kwcommercial.com  
CalDRE Lic. #02039512

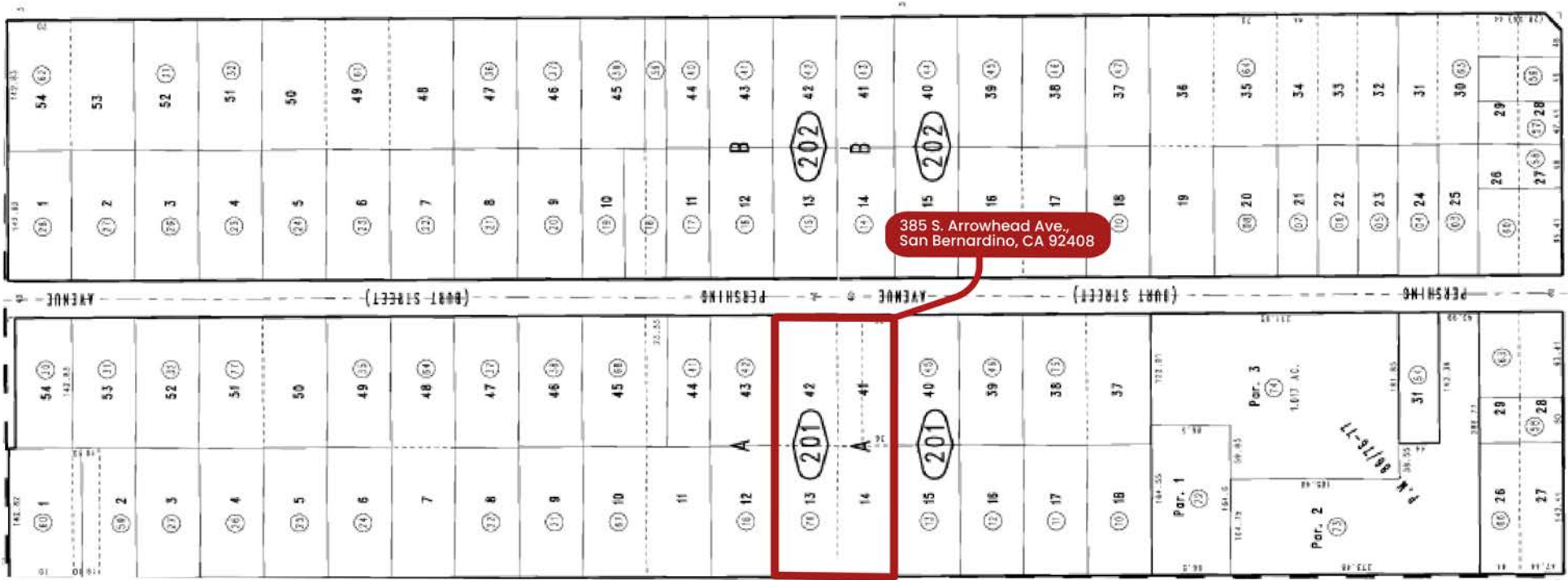
Robert D. Bagley III  
909.935.0938  
Robert.Bagley@kwcommercial.com  
CalDRE Lic. #02131874

Daniel W. Richards  
909.243.7747 x 222  
Daniel.Richards@kwcommercial.com  
CalDRE Lic. #00803221



INLAND EMPIRE

CAL DRE # 02120868



Rene Ramos, Jr.  
909.980.6868  
Rene.Ramos@kwcommercial.com  
CalDRE Lic. #01836872

Jacob B. Bernardy  
909.935.0935  
Jacob.Bernardy@kwcommercial.com  
CalDRE Lic. #02039512

Robert D. Bagley III  
909.935.0938  
Robert.Bagley@kwcommercial.com  
CalDRE Lic. #02131874

Daniel W. Richards  
909.243.7747 x 222  
Daniel.Richards@kwcommercial.com  
CalDRE Lic. #00803221



**INLAND  
EMPIRE**

# ADDITIONAL PROPERTY PICTURES

385 S. ARROWHEAD AVE., SAN BERNARDINO, CA 92408



Rene Ramos, Jr.  
909.980.6868  
Rene.Ramos@kwcommercial.com  
CalDRE Lic. #01836872

Jacob B. Bernardy  
909.935.0935  
Jacob.Bernardy@kwcommercial.com  
CalDRE Lic. #02039512

Robert D. Bagley III  
909.935.0938  
Robert.Bagley@kwcommercial.com  
CalDRE Lic. #02131874

Daniel W. Richards  
909.243.7747 x 222  
Daniel.Richards@kwcommercial.com  
CalDRE Lic. #00803221



INLAND  
EMPIRE

CAL DRE # 02120868

# ADDITIONAL PROPERTY PICTURES

385 S. ARROWHEAD AVE., SAN BERNARDINO, CA 92408



Rene Ramos, Jr.  
909.980.6868  
Rene.Ramos@kwcommercial.com  
CalDRE Lic. #01836872

Jacob B. Bernardy  
909.935.0935  
Jacob.Bernardy@kwcommercial.com  
CalDRE Lic. #02039512

Robert D. Bagley III  
909.935.0938  
Robert.Bagley@kwcommercial.com  
CalDRE Lic. #02131874

Daniel W. Richards  
909.243.7747 x 222  
Daniel.Richards@kwcommercial.com  
CalDRE Lic. #00803221



INLAND  
EMPIRE

CAL DRE # 02120868