

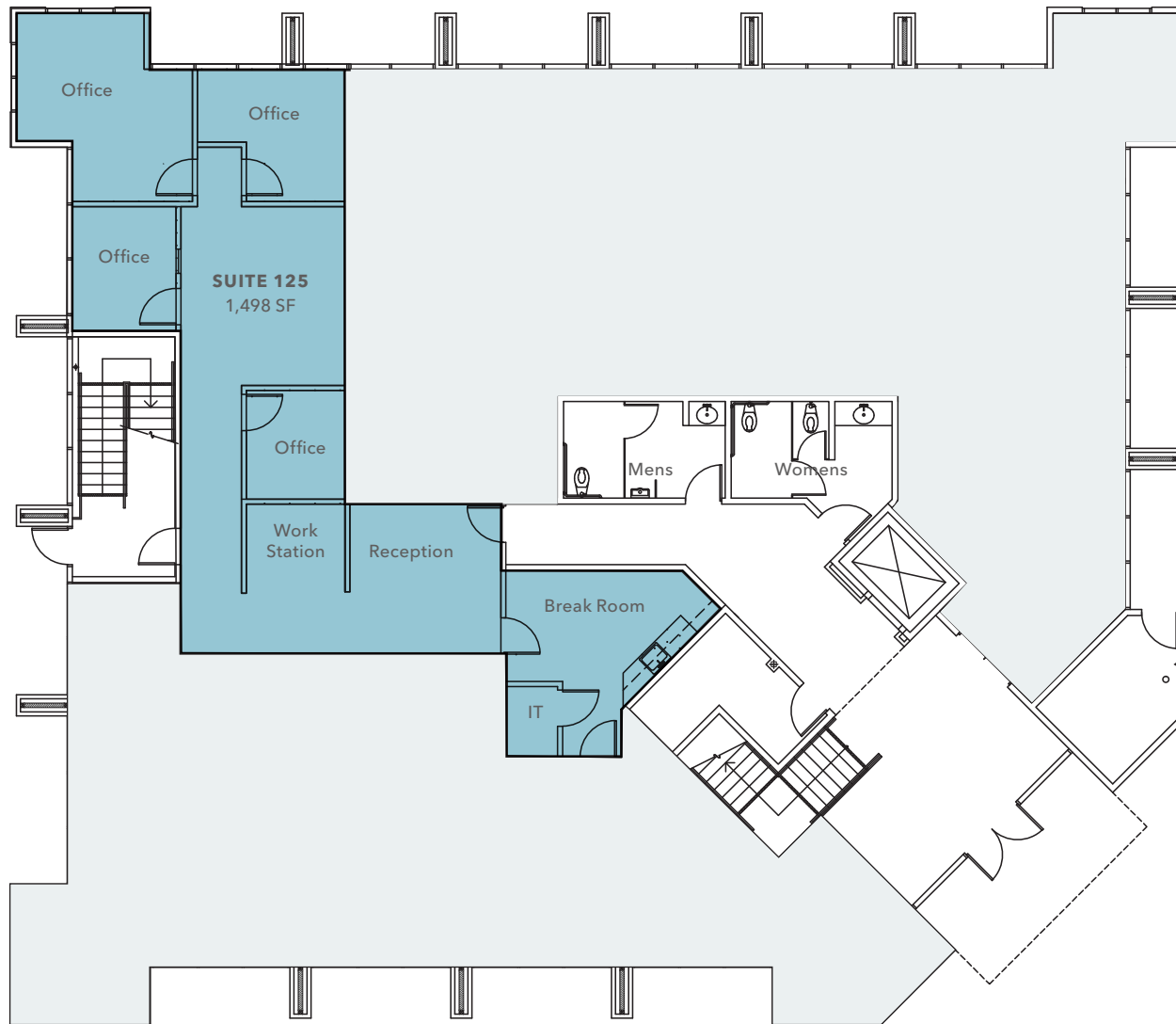


2267 LAVA RIDGE COURT

*±1,498SF Available
Suite 125*

ROSEVILLE, CA 95661

FIRST FLOOR PLAN



+1,498 SF

SUITE 125

(4) Four offices, workstations for 3-4, shared break room with adjacent tenant

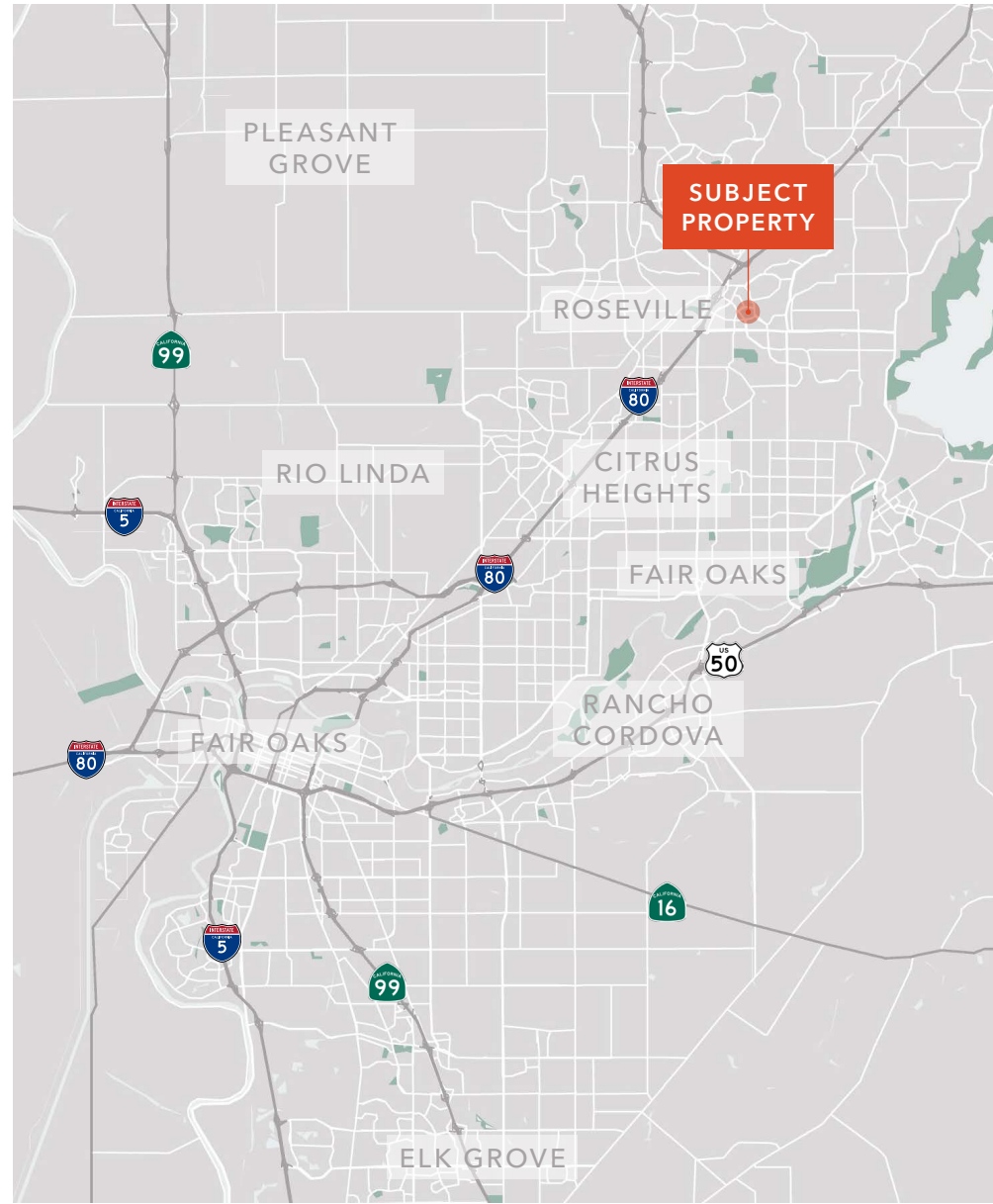
Includes back exit for parking lot access

MONUMENT

SIGNAGE AVAILABLE



2267 LAVA RIDGE COURT



2267 LAVA RIDGE COURT

Exclusively leased by

JON WALKER

916.751.3631

jon.walker@kidder.com

LIC N° 01204666

KIDDER.COM

This information supplied herein is from sources we deem reliable. It is provided without any representation, warranty, or guarantee, expressed or implied as to its accuracy. Prospective Buyer or Tenant should conduct an independent investigation and verification of all matters deemed to be material, including, but not limited to, statements of income and expenses. Consult your attorney, accountant, or other professional advisor.

 **Kidder
Mathews**