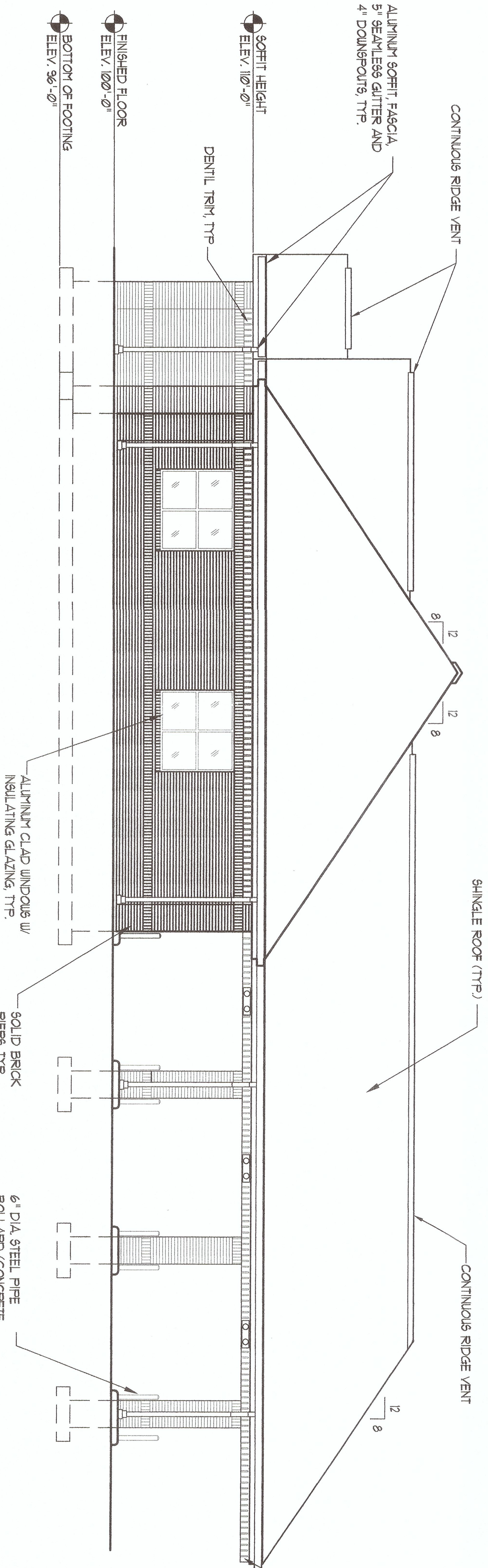


SOUTH ELEVATION  
SCALE: 3/16" = 1'-0"



WEST ELEVATION  
SCALE: 3/16" = 1'-0"

**EXTERIOR FINISHES:**

- BRICK - CENTURY USED BRICK ST. LOUIS
- MORTAR - NATURAL
- SHINGLES - TANKO HERITAGE 30, BLACK WALNUT (SIMULATED SHAKE)
- FASCIA, SOFFIT, GUTTERS & ODE - ROLLEX BRONZE
- WINDOWS - BRONZE ALUMINUM w/ INSULATED GLASS
- DENTIL TRIM - PAINTED
- EIFE - TEXTURE: SANDBLAST, COLOR: CHINA WHITE
- ALUMINUM ENTRY -
- 1. ERCO SYSTEM 403, 1" INSULATED GLASS, 2" X 4 1/2" FRAMING MEMBERS, BRONZE
- 2. DOOR FRAME ERCO SYSTEM 402, BRONZE
- 3. DOORS ERCO SYSTEM 0200, 5 1/2" BOTTOM RAIL, STD. HARDWARE w/ DEADBOLT KEYPED LOCK
- CONTINUOUS GEAR HINGE, STD. RUSH/PULL BAR DORNY 88
- DOOR CLOSURES, BRONZE
- THRESHOLDS: SCHLITZER AE-100, BRUSHED ALUMINUM

**NOTES:**

1. BRICK PIERS AT BUILDING CORNERS TO HAVE A 3/4" PROJECTION FROM PLANE OF WALL MASS.

EIFE9 ON BOTTOM AND SIDE OF SOFFIT DENTIL TO BE MOUNTED TO FACE OF EIFE9. SEE DETAIL 1/42.

REVISIONS		
NO.	DATE	REMARKS

SOUTH AND WEST ELEVATIONS

**NEW BANKING FACILITY**  
**SCHUYLER STATE BANK**  
 1661 EAST JACKSON STREET  
 MACOMB, MCDONOUGH COUNTY, ILLINOIS 61455

**FITCH-FITZGERALD, INC.**  
 ARCHITECTS • ENGINEERS • ENVIRONMENTAL

1905 MONTANA DRIVE, SUITE 10  
 SPRINGFIELD, ILLINOIS 62704  
 PHONE: 217.523.6340 FAX: 217.523.8216

DRAWN BY  
**EPM**

PROJECT NO.  
**0534**

DATE:  
**10 FEB 06**

SHEET  
**A6**  
 OF 10