

Up to 66,000 SF

New Haven Plaza

560 Ella Grasso Boulevard
New Haven, CT

CBRE is pleased to present New Haven Plaza, an excellent opportunity to lease quality space at 560 Ella T. Grasso Boulevard in New Haven, Connecticut, ideal for Life Science, Educational and standard office or flex uses. The property offers excellent highway access and proximity to Yale-New Haven Hospital, Yale University, University of New Haven and the Central Business District with a scenic riverscape and open green space.



Up to 66,000 SF

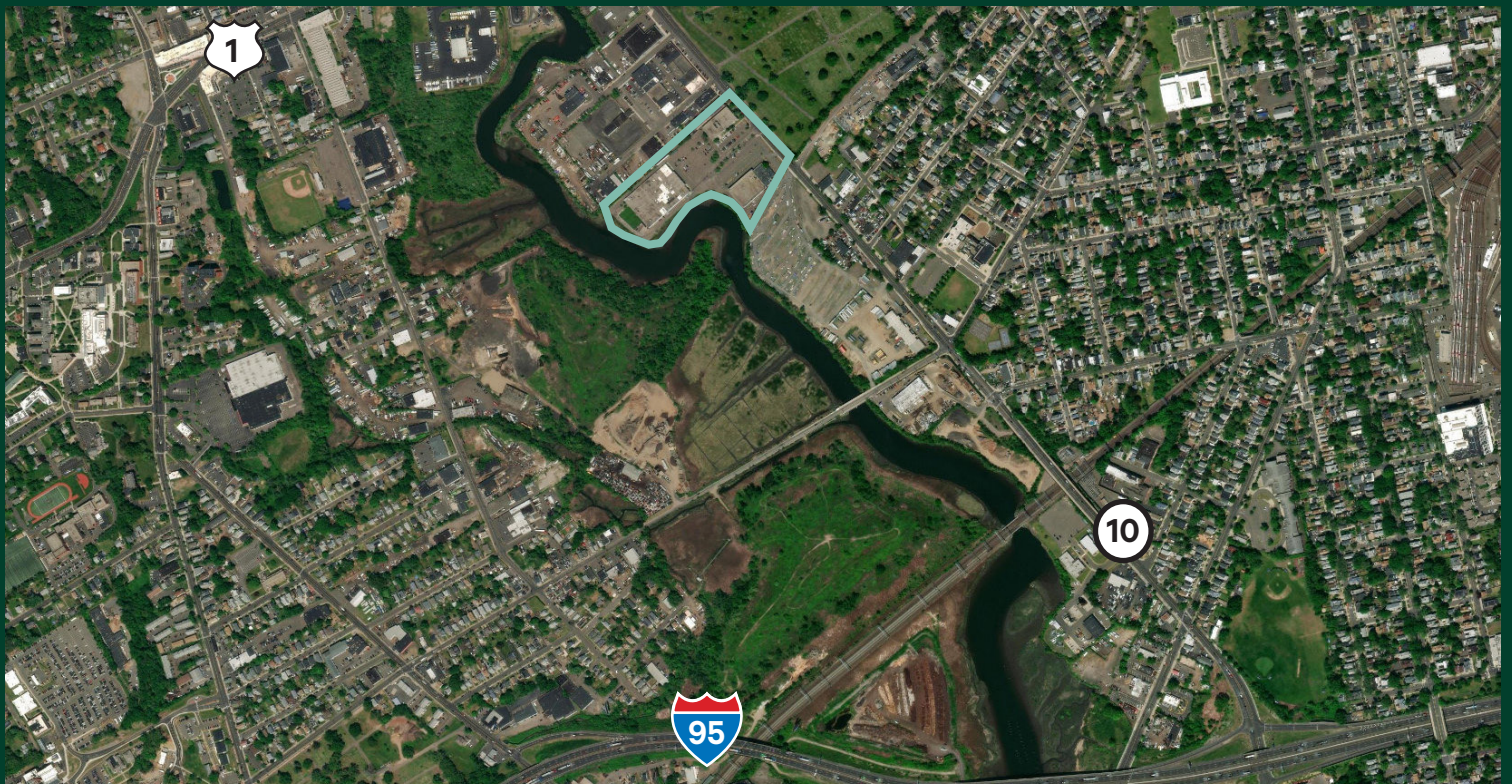
560 Ella T. Grasso Boulevard | New Haven, CT

For Lease

Office/Flex Space

Property Highlights:

- + Up to 66,000 SF available
- + Available space can be subdivided to 5,000 SF
- + Ample surface parking
- + Less than one mile to Interstate 95
- + Less than five minutes to Yale-New Haven Hospital and Downtown New Haven
- + Single story building can be an easy conversion to Life Science/ Biotech
- + **Lease Rate:** \$16.50/SF Gross

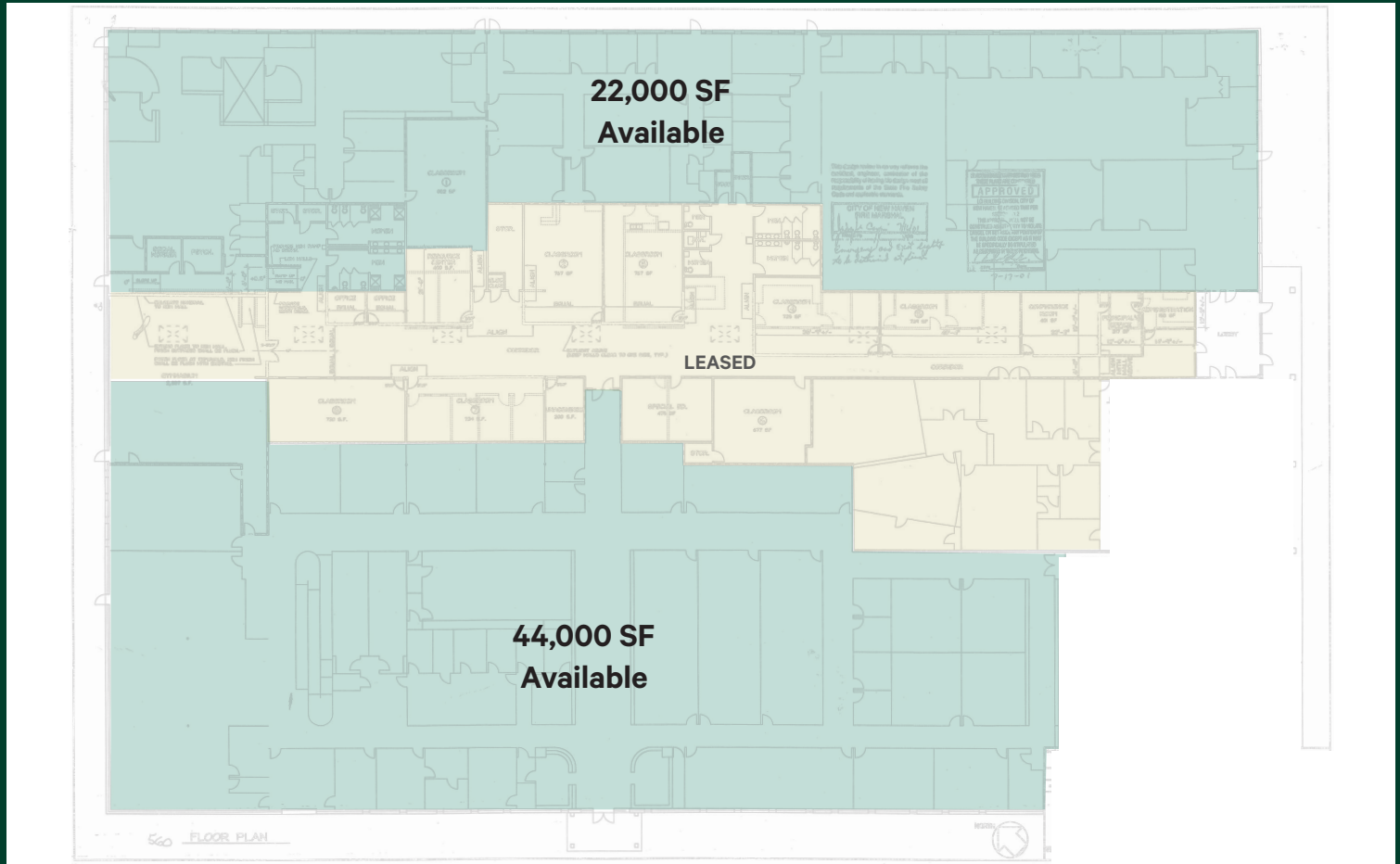


Up to 66,000 SF

560 Ella T. Grasso Boulevard | New Haven, CT

For Lease

Floor Plan



Contact Us

David Hansen
Vice President
+1 203 777 5996
david.hansen@cbre.com

CBRE Inc.
+1 860 525 9171

© 2025 CBRE, Inc. All rights reserved. This information has been obtained from sources believed reliable but has not been verified for accuracy or completeness. CBRE, Inc. makes no guarantee, representation or warranty and accepts no responsibility or liability as to the accuracy, completeness, or reliability of the information contained herein. You should conduct a careful, independent investigation of the property and verify all information. Any reliance on this information is solely at your own risk. CBRE and the CBRE logo are service marks of CBRE, Inc. All other marks displayed on this document are the property of their respective owners, and the use of such marks does not imply any affiliation with or endorsement of CBRE. Photos herein are the property of their respective owners. Use of these images without the express written consent of the owner is prohibited.