

Suite 219

Located on the second floor, this suite offers spacious, modern, offices with close proximity to building amenities.

Size: As shown

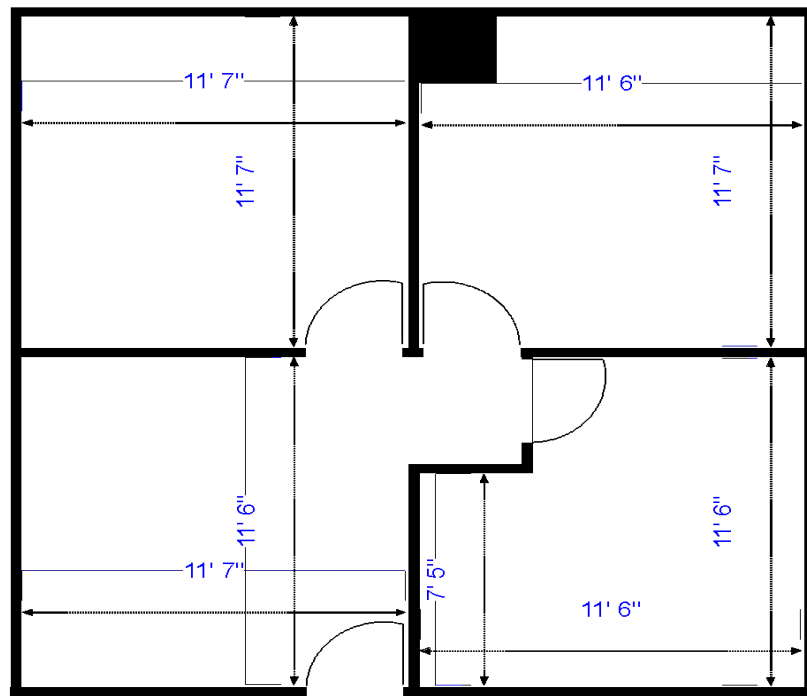
Highlights:

Term: 2 and 3 year terms

- Renovated suite
- New flooring/trim/blinds
- Smooth ceilings
- LED recessed lights
- Courtyard style building
- Central OC Location
- 24/7 access

Includes:

- Utilities
- Parking
- Janitorial



CONTACT: Tan and Green Properties
(818) 502-1292
clint@tanandgreen.com

This information has been secured from sources we believe to be reliable, but we make no representations or warranties, expressed or implied, as to the accuracy of the information. References to square footage or age are approximate. Buyer must verify the information and bears all risk for inaccuracies.