

RATE REDUCTION!

SALT LAKE OFFICE WAREHOUSE FOR LEASE

Lease Rate: \$1.25/PSF NNN | CAM: \$0.21/PSF



10,976 SQ. FT. AVAILABLE FOR LEASE

- ✓ Office: Approx. 2,914 Sq. Ft.
- ✓ Warehouse: Approx. 8,062 Sq. Ft.

PROPERTY INFORMATION

- ✓ Lease Rate: \$1.25 NNN
- ✓ Private Fenced Yard
- ✓ Two 12' X 14' Level Doors (Drive Through Capable)
- ✓ 20' Clearance
- ✓ Power: 3 Phase Heavy Power
- ✓ Fire Suppression
- ✓ Construction: Masonry
- ✓ Year Built: 1977
- ✓ Easy Access to I-15 and Legacy Hwy
- ✓ New LED lighting throughout warehouse
- ✓ New Roof (2022)



CONTACT US

JUSTIN WELCH

✉ justin@cresutah.com

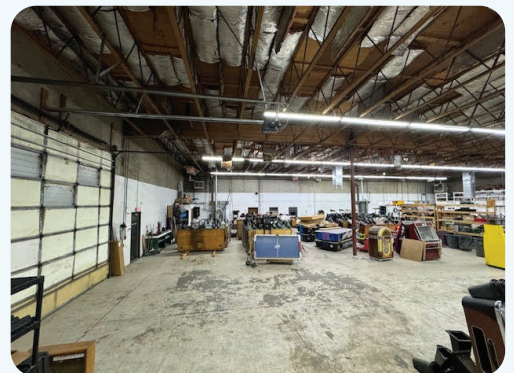
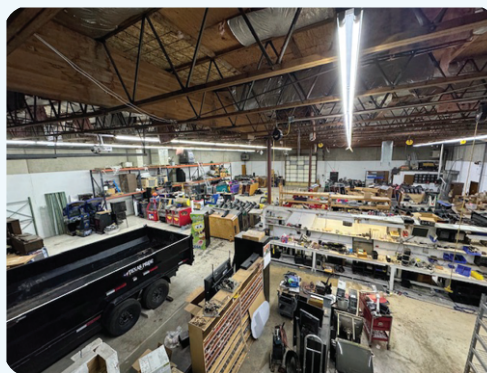
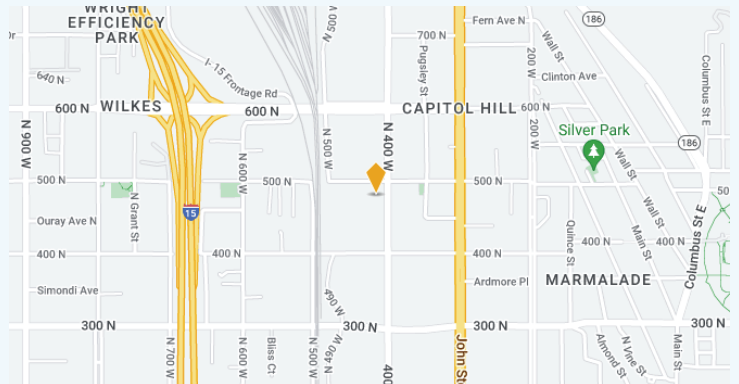
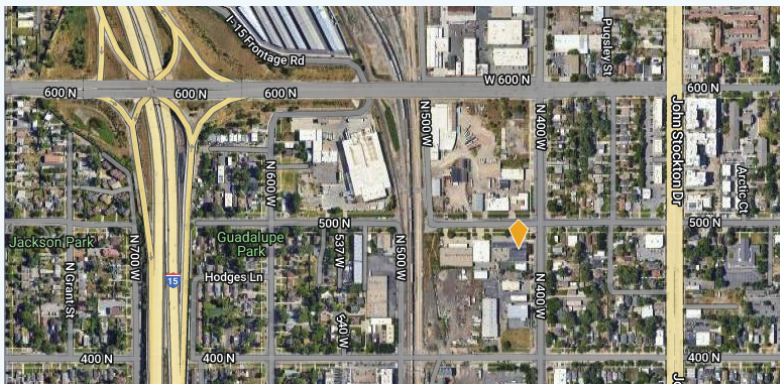
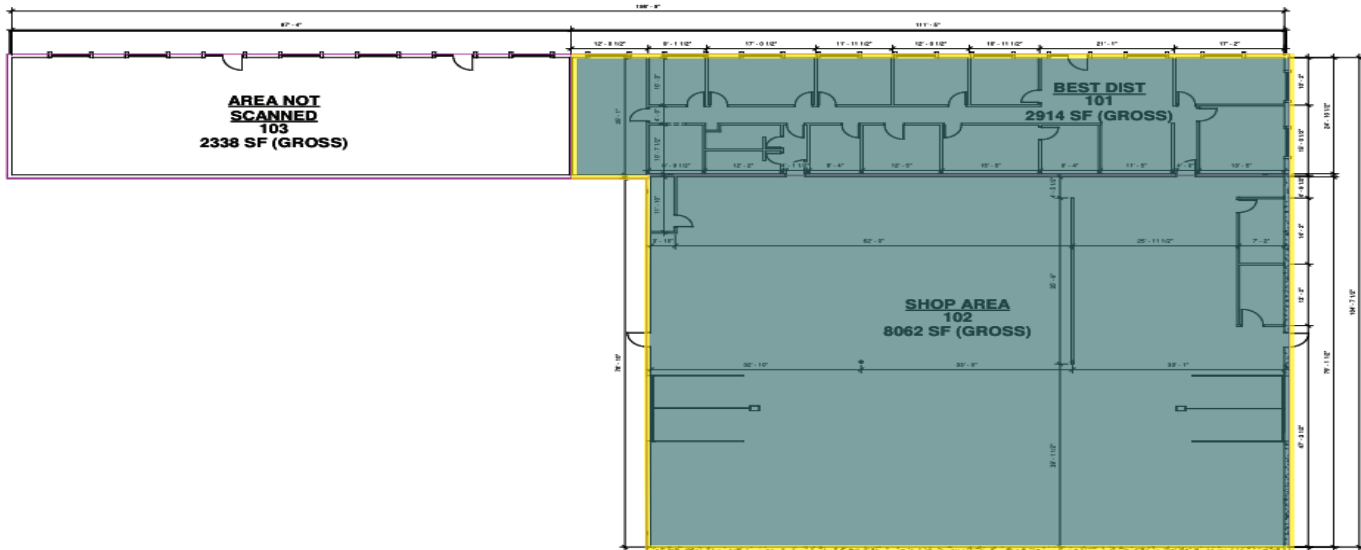
☎ 801-718-8842

🌐 www.cresutah.com

📍 2040 E. Murray Holladay Road Suite 160 Holladay, UT

Tel: 801.876.6070 📞

405 WEST 500 NORTH SALT LAKE CITY, UT 84103



This information is given with the understanding that all negotiations and/or real estate activity related to the property described above shall be conducted through this CRES office. The above information while not guaranteed, was obtained from sources we believe to be reliable.

CONTACT US

JUSTIN WELCH

✉ justin@cresutah.com

☎ 801-718-8842

🌐 www.cresutah.com

📍 2040 E. Murray Holladay Road Suite 160 Holladay, UT

Tel: 801.876.6070 📞