

STREAM



CHARLOTTE
PLAZA

CHARLOTTE PLAZA

201 South College Street

Charlotte Plaza, a 27-story Class-A office tower in Charlotte's central business district with unparalleled connectivity and access.

CLASS A OFFICE

27-story building with 25,000 sf floor plates

PANORAMIC VIEWS

Floor to ceiling glass curtain wall

WORK AND PLAY

Outdoor seating areas and on-site dining amenities

COVERED PARKING

800+ on-site parking spots

RELIABLE TENANT EXPERIENCE

On-site management team and 24/7 security



LOCATION

Charlotte Plaza is one of the most easily accessible towers in Uptown

Offering immediate connection to the light rail, and an attached parking deck with two entrances, and a central location in the heart of Charlotte's business district. Charlotte Plaza is centrally location along the Overstreet Mall allowing for fast access to more than 50 restaurants within a short walk.



**3RD/CONVENTION CENTER
STATION LIGHT RAIL STOP**

CHARLOTTE PLAZA PARKING DECK

← EGRESS

INGRESS →

BLUE LINE LIGHT RAIL

3RD ST.

4TH ST.

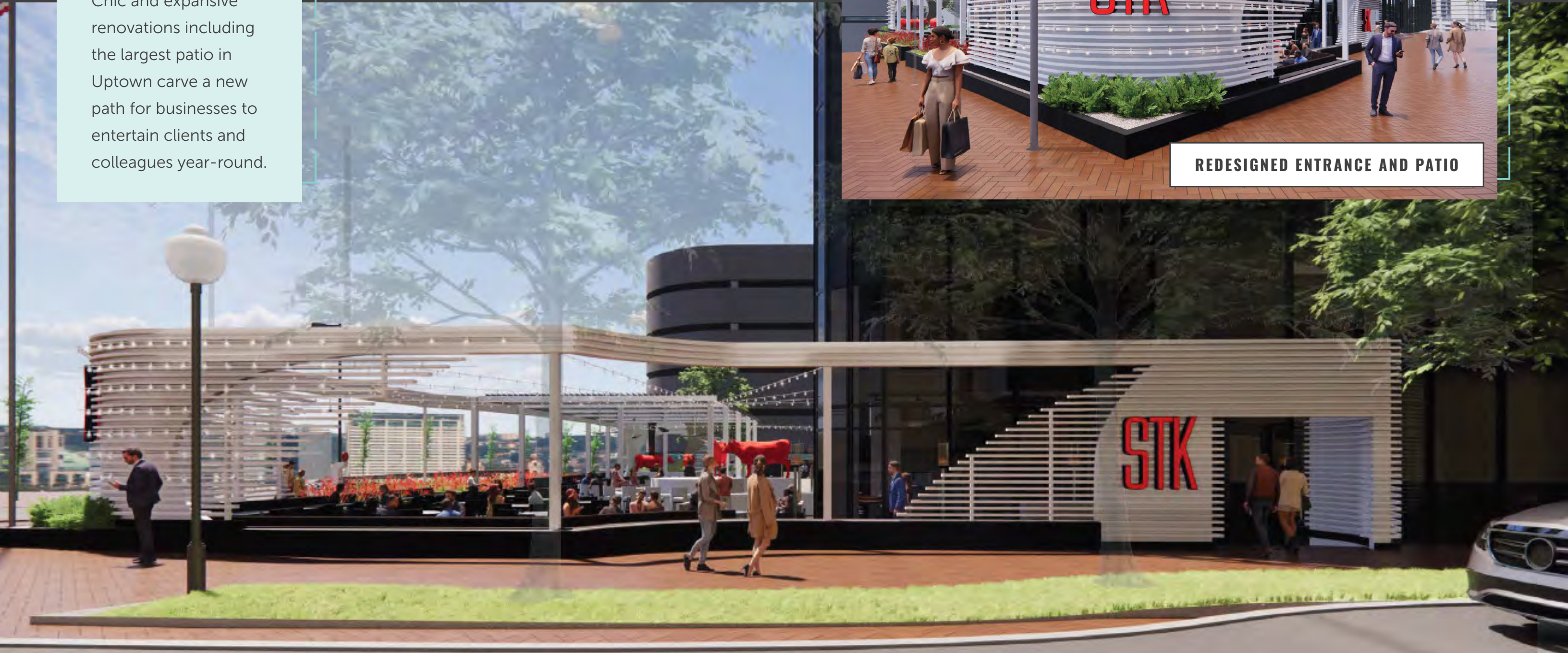
REDEFINING UPSCALE DINING, RIGHT DOWNSTAIRS

An on-site elevated restaurant experience at STK Steakhouse.

Chic and expansive renovations including the largest patio in Uptown carve a new path for businesses to entertain clients and colleagues year-round.



REDESIGNED ENTRANCE AND PATIO



ABUNDANT OUTDOOR SEATING

A NEW STREET-TO-SUITE EXPERIENCE

Building a vision from the ground-up.



EXISTING PLAZA/ENHANCEMENTS AREA



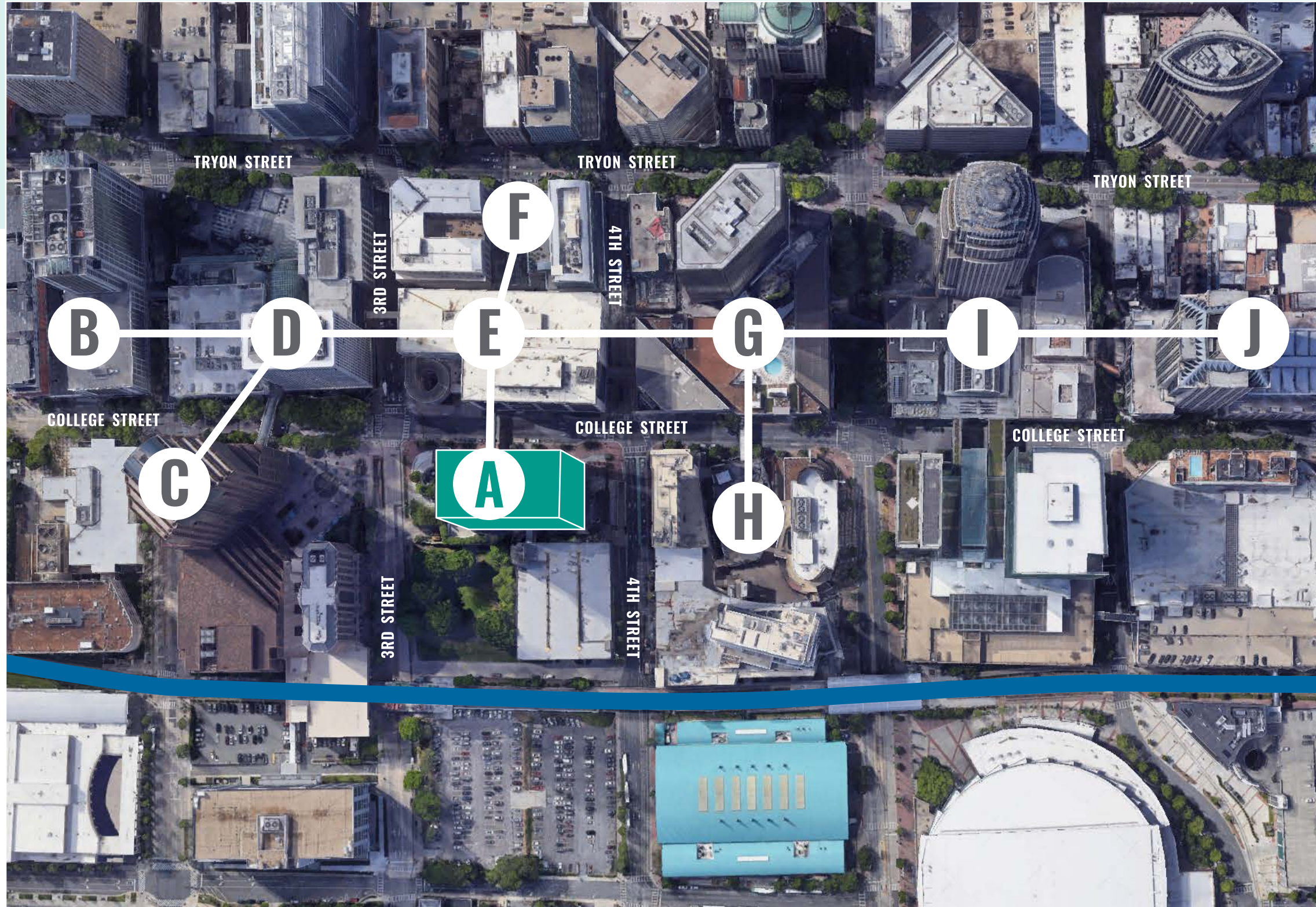
NEW OUTDOOR PLAZA


Extensive exterior enhancements join the outdoor plaza and Charlotte Plaza lobby for an elevated connection of people and place. Make wellness an integrated part of your day with ample outdoor gathering spaces to take the workday outside.

CONNECTIVITY

Direct connection to Charlotte's Overstreet Mall allows for fast access to 100+ restaurants, retailers and services within a short walk.

ON-SITE RETAIL:



- A** Charlotte Plaza
 - B** Three Wells Fargo
 - C** 301 S. College
 - D** Two Wells Fargo
 - E** BB&T Center
 - F** South Tryon Square
 - G** One South at The Plaza
 - H** Charlotte Epicenter
 - I** Bank of America Corp. Center
 - J** Truist Center
-  Blue Line Light Rail

Overstreet Mall is a second-floor pedestrian corridor connecting office buildings, retailers, restaurants, parking garages and hotels across Uptown Charlotte through a series of pedestrian bridges and walkways. Tenants and visitors are protected from the elements and can comfortably navigate Uptown without ever stepping outside.



TIMELESS DESIGN

Modern two-story lobby

Efficient floorplates

Floor-to-ceiling glass curtain wall



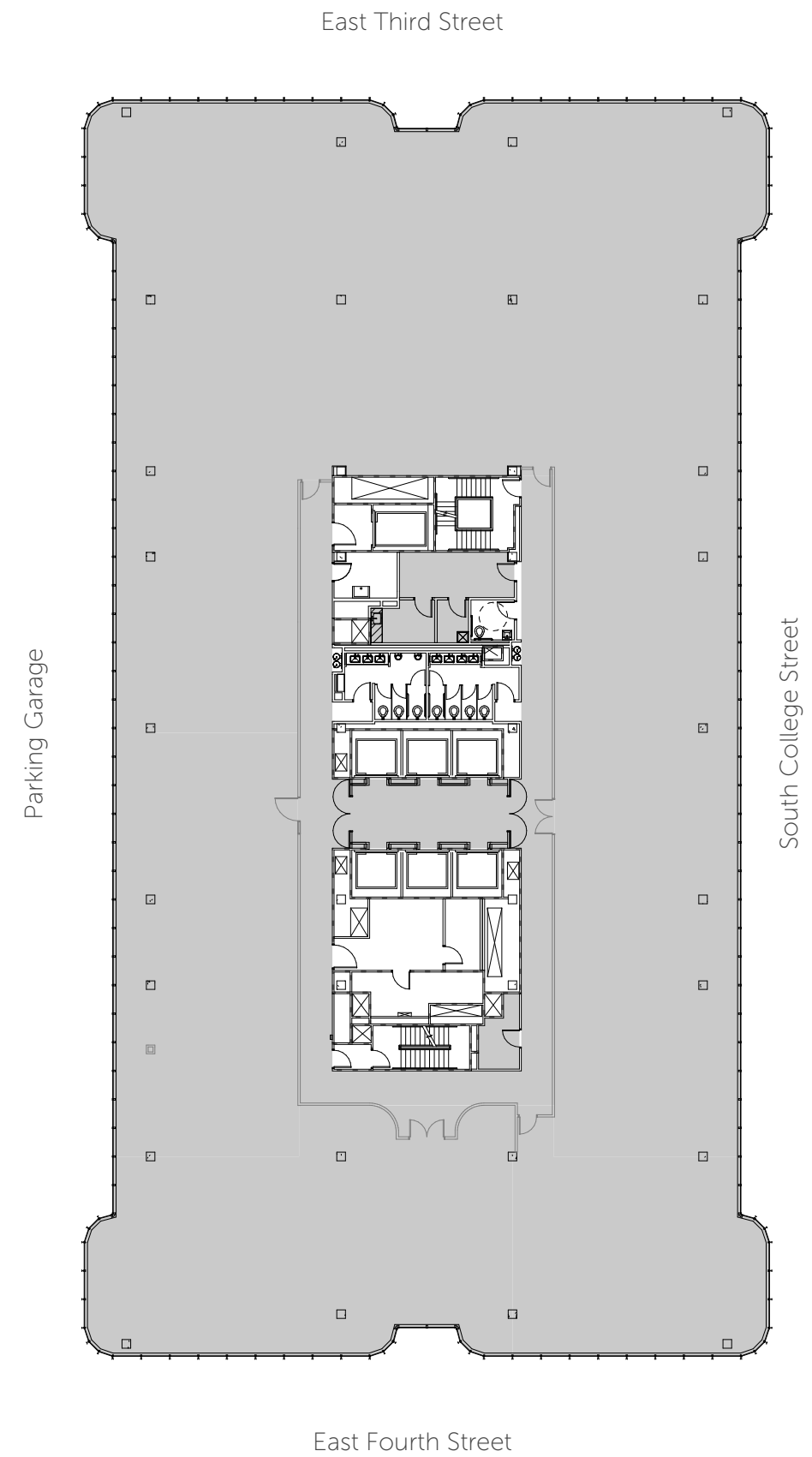
3 CONTIGUOUS PENTHOUSE FLOORS WITH SKYLINE VIEWS

Amid panoramic views of the Uptown skyline and Bank of America Stadium, this prominent office at the top of Charlotte Plaza benefits a company with a significant footprint. With

an interconnecting staircase, the space is dynamic enough to empower operations and promote collaboration between teams. This expansive and prestigious offering is a strategic enabler for continued growth and workplace strategy.



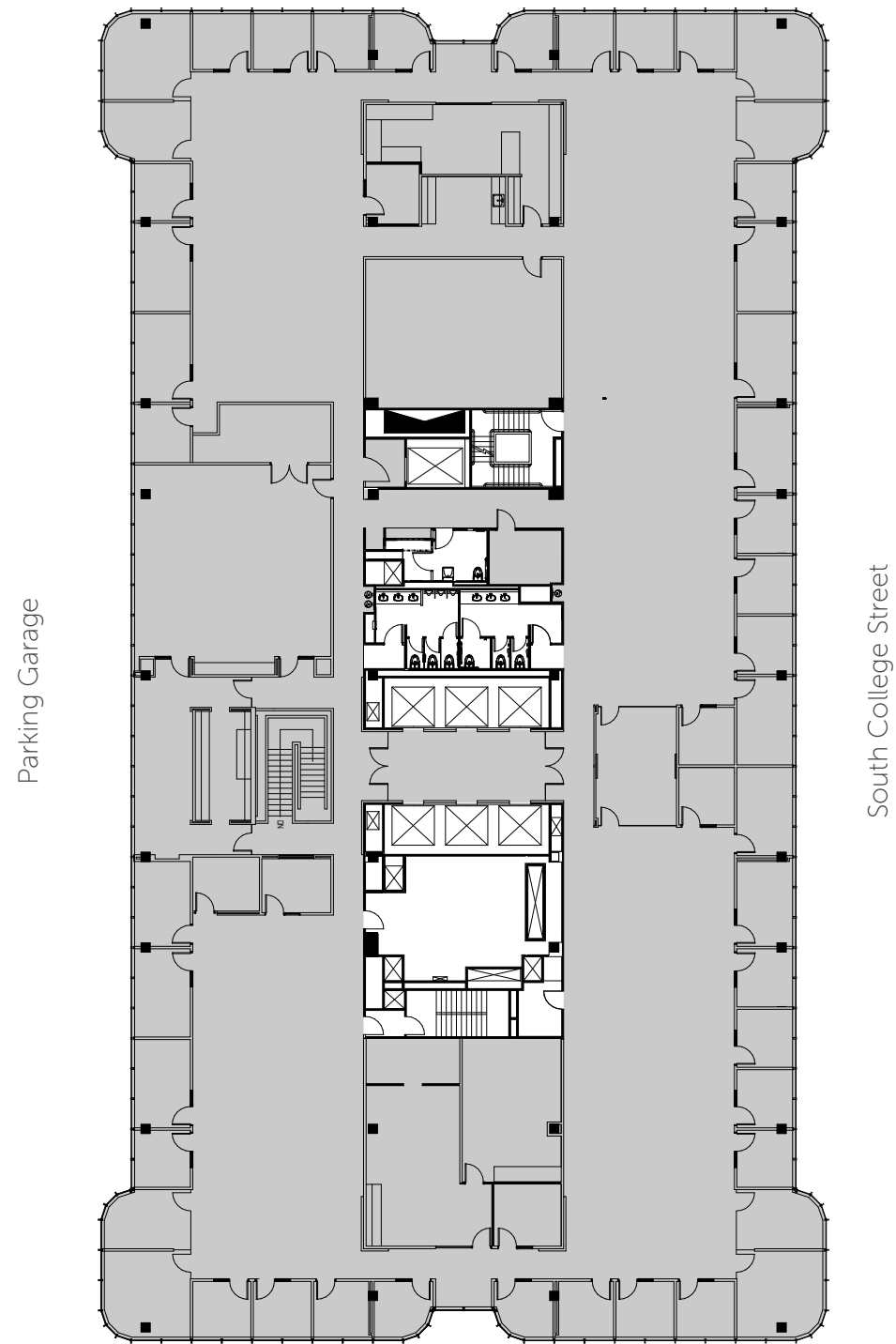
FLOOR 27 (24,907 RSF)



FLOOR 26 (24,994 RSF)

As-built

East Third Street

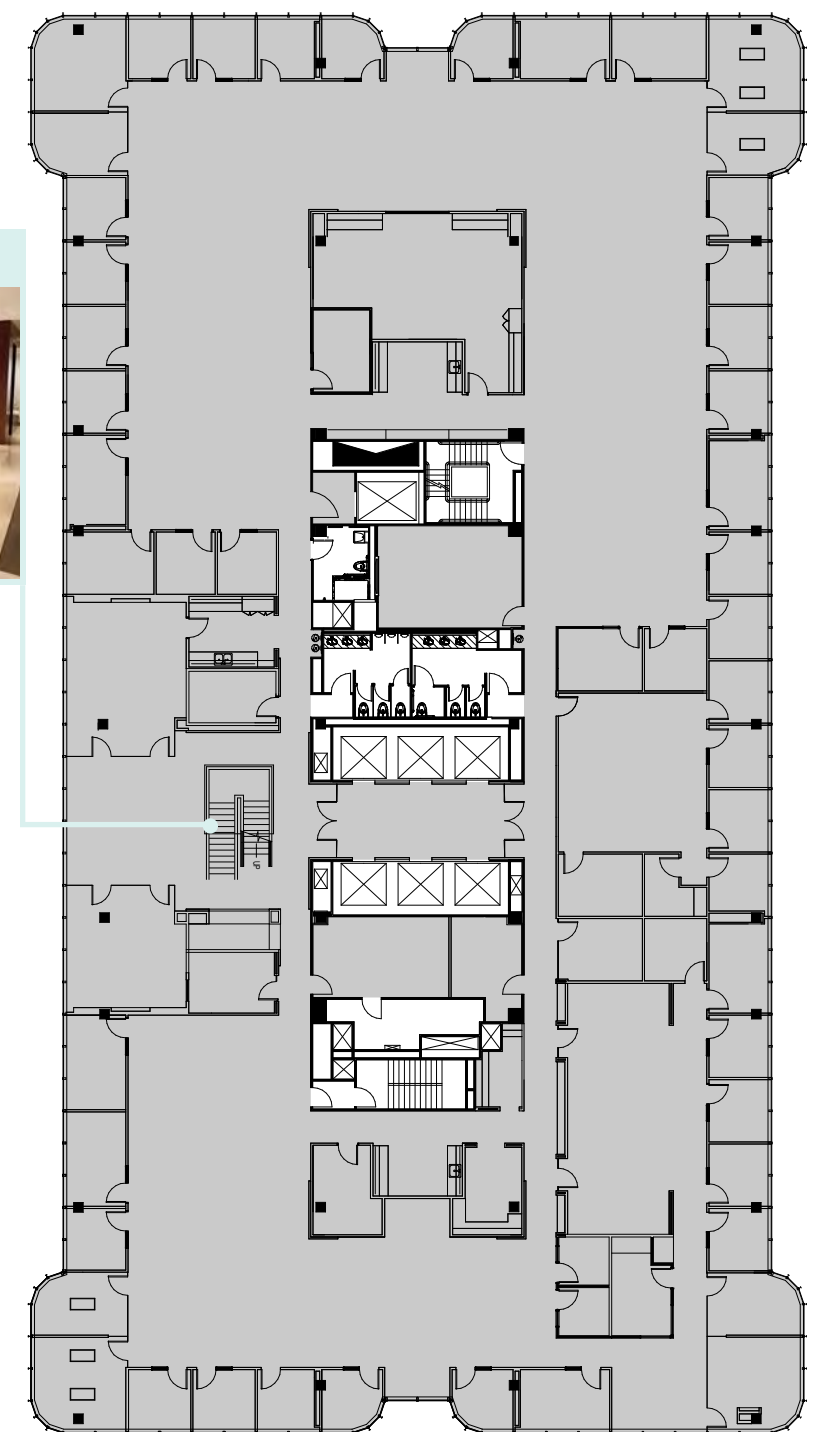
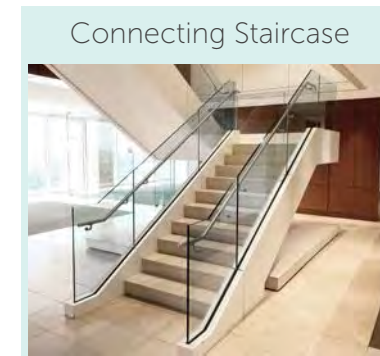


East Fourth Street

FLOOR 25 (25,596 RSF)

As-built

East Third Street



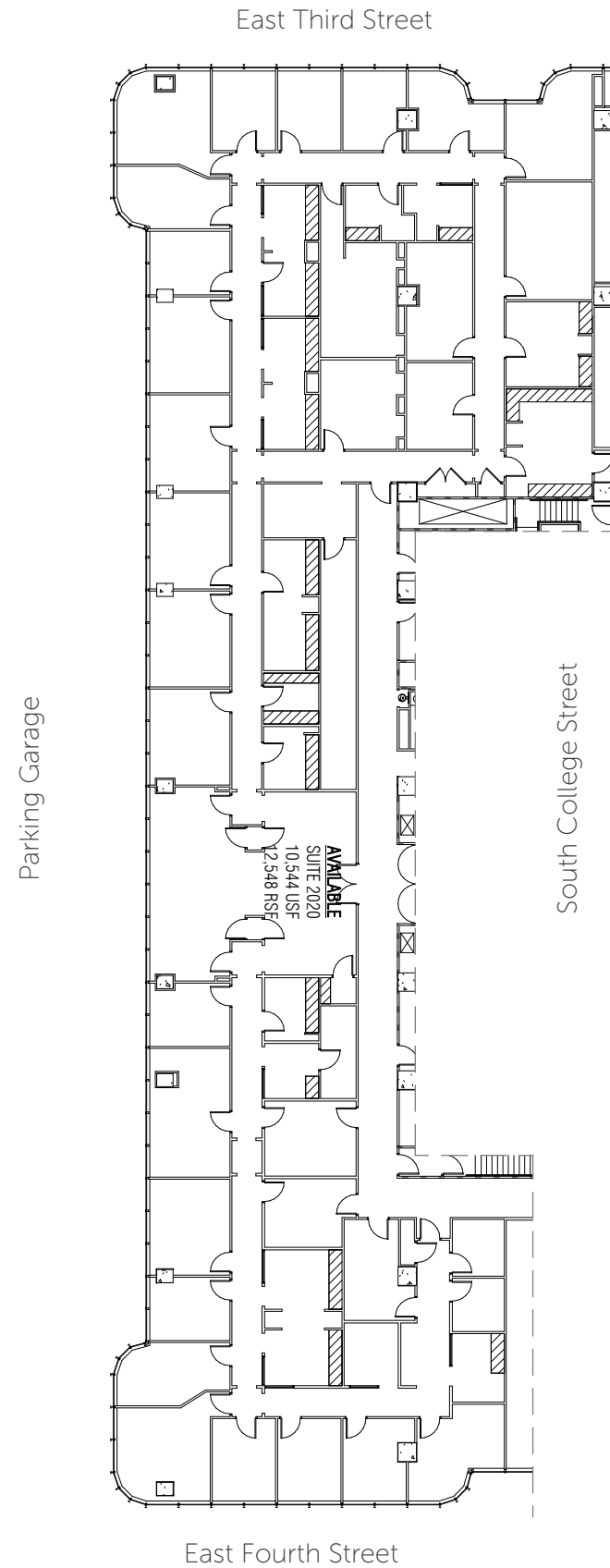
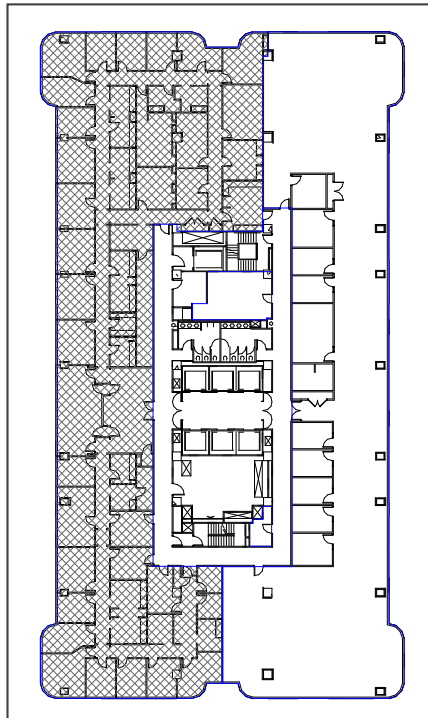
East Fourth Street

FLOOR 20 (12,548 RSF)

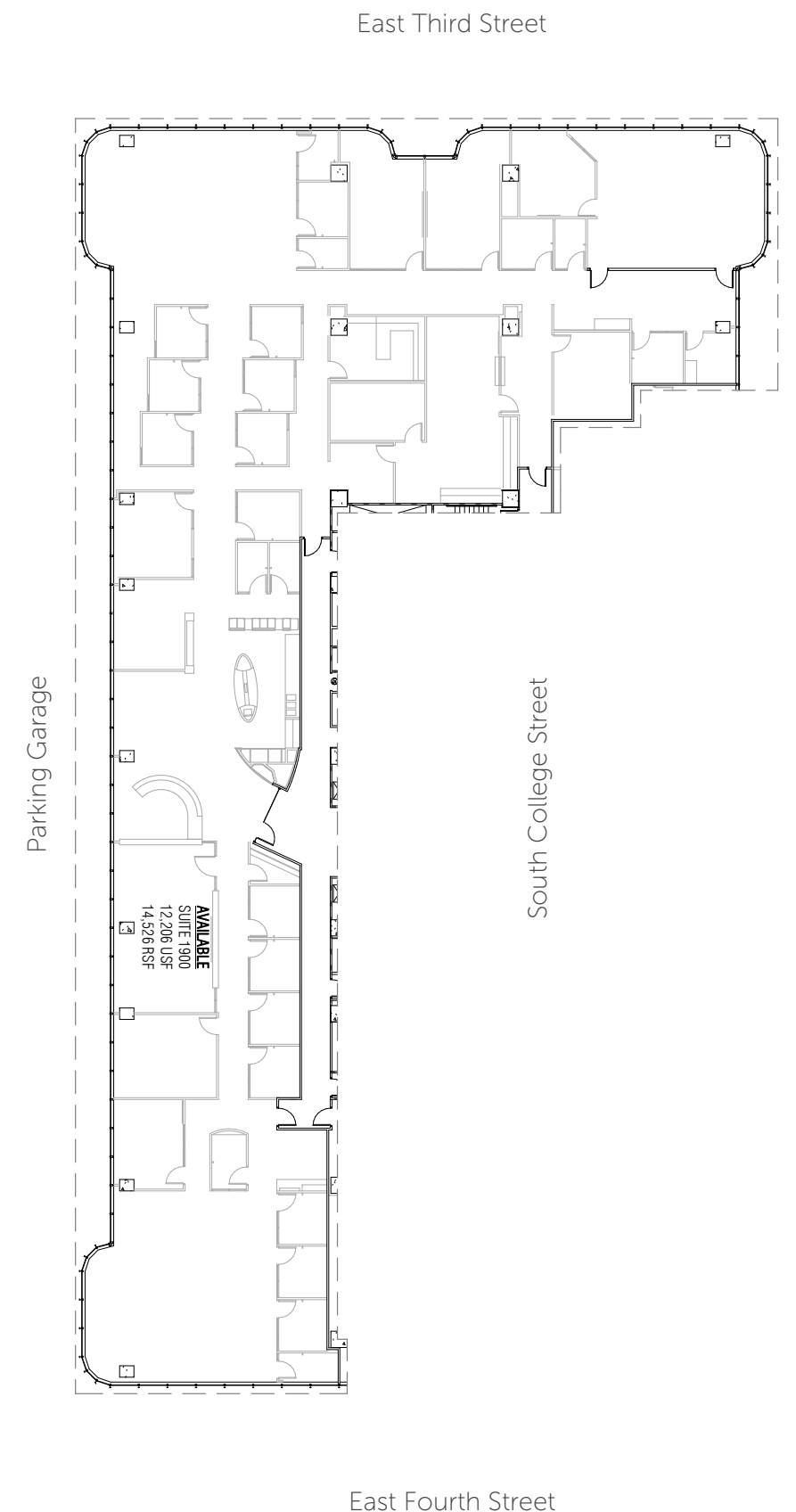
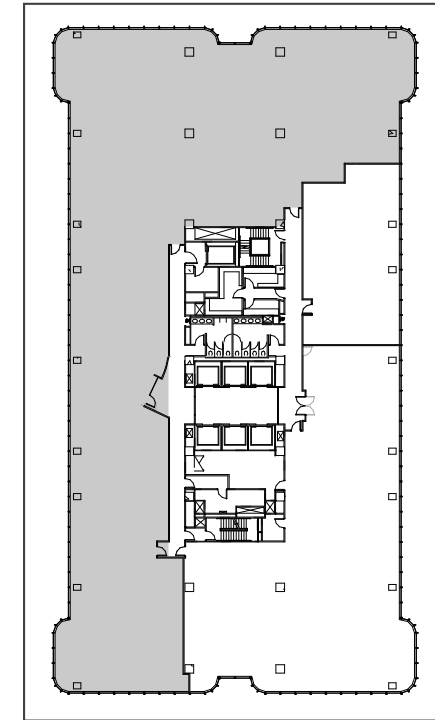
As-built

CORNER SUITE

This half-floor space with commanding eastern views of Uptown and beyond is perfect for a growing organization to establish an impressive footprint in one of Charlotte's premier commercial addresses. Tenants on this floor also can enjoy a newly renovated common area and restrooms.

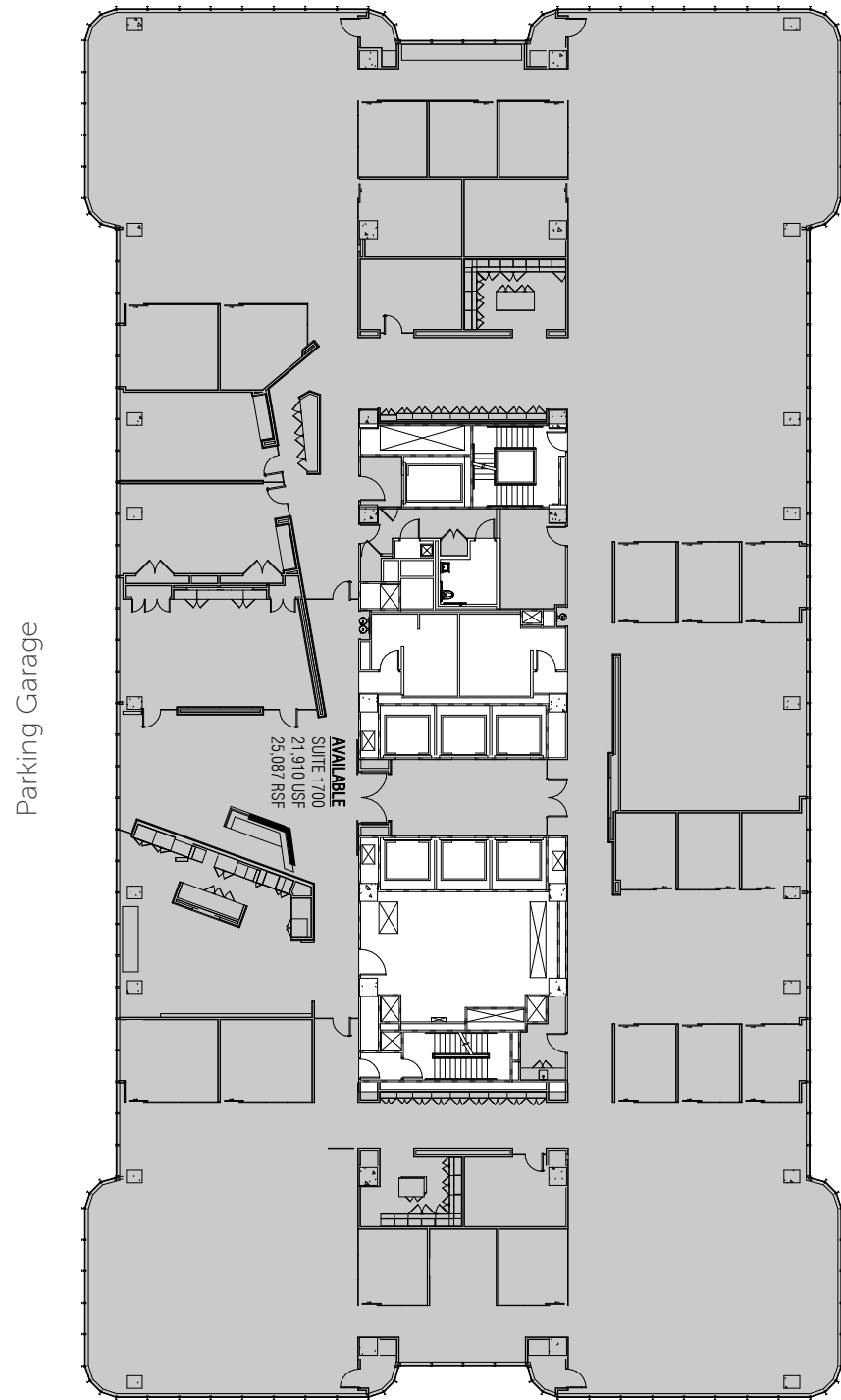


FLOOR 19 (14,526 RSF)



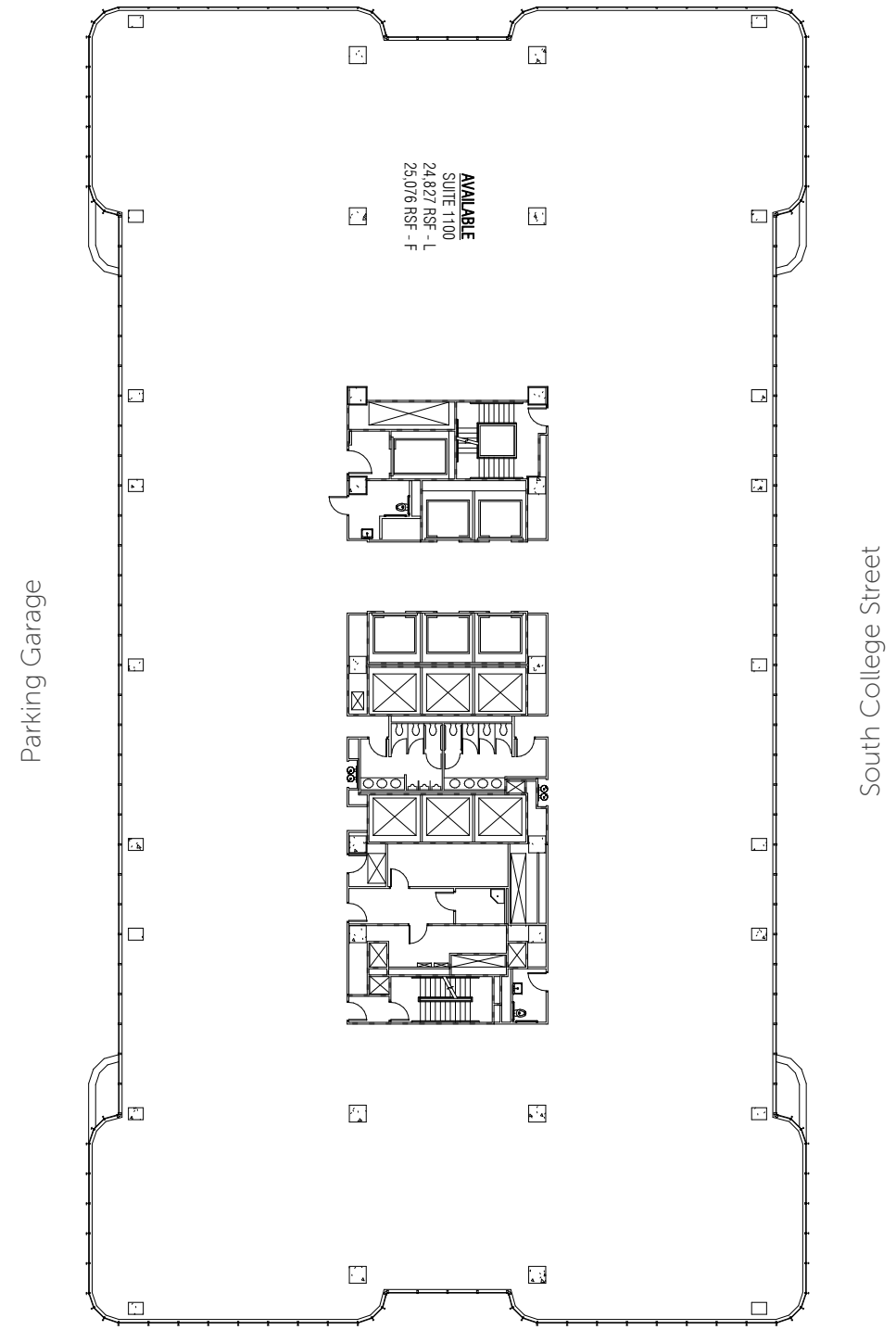
FLOOR 17 (25,087 RSF)

East Third Street



FLOOR 11 (25,076 RSF)

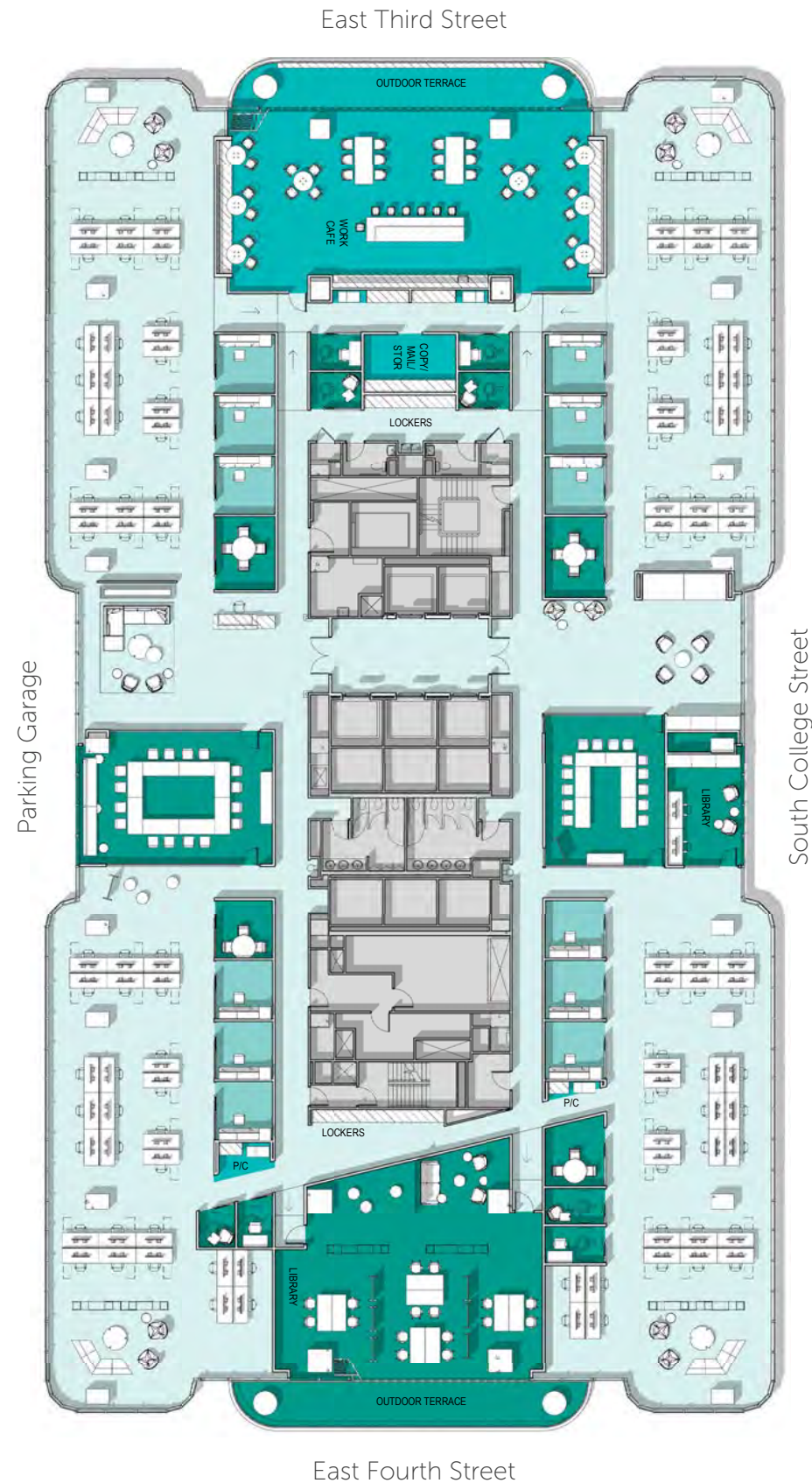
East Third Street



FLOOR 2 (23,763 RSF)

Test fit

- Open Office
- Office
- Conference
- Support



FULL FLOOR AND OUTDOOR SPACE

With high ceilings and a dynamic, spacious floorplate, floor 2 will enable you to strategize for an efficient and collaborative atmosphere. The full-floor space is designed for flexibility to optimize your team's workplace strategy,

while the potential for two outdoor patios allows for a creative and inviting office experience. The space is also ideally positioned for prominent eyebrow signage along Uptown Charlotte's well-traveled 3rd or 4th Streets.





CHARLOTTE
PLAZA

