

6900 WHITNEYVILLE AVE SE
ALTO, MICHIGAN

VACANT LAND FOR SALE OR LEASE
0.96 Acres Available



SIGNATURE ASSOCIATES
KNOW SIGNATURE | KNOW RESULTS

DEVELOPMENT

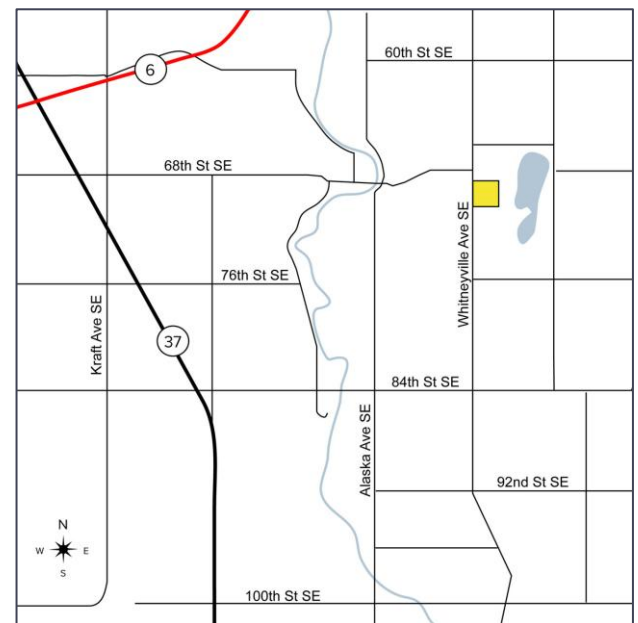


PROPERTY FEATURES

- 0.96 acres available
- Corner lot
- Zoned C-1
- City sanitary sewer with well water
- South of Dollar General
- Sale Price: \$499,000 (\$519,792/ac)
- Lease Rate: \$8,000/mo

DEMOGRAPHICS

	POPULATION	MED. HH INCOME
1 MILE	1,573	\$77,482
3 MILE	9,620	\$105,763
5 MILE	24,432	\$101,794



For more information, please contact:

JOE RIZQALLAH

(616) 822 6310

jrizzqallah@signatureassociates.com

CAROLYN BOJI

(616) 213 4560

cboji@signatureassociates.com

SIGNATURE ASSOCIATES

1188 East Paris Ave SE, Suite 220

Grand Rapids, MI 49546

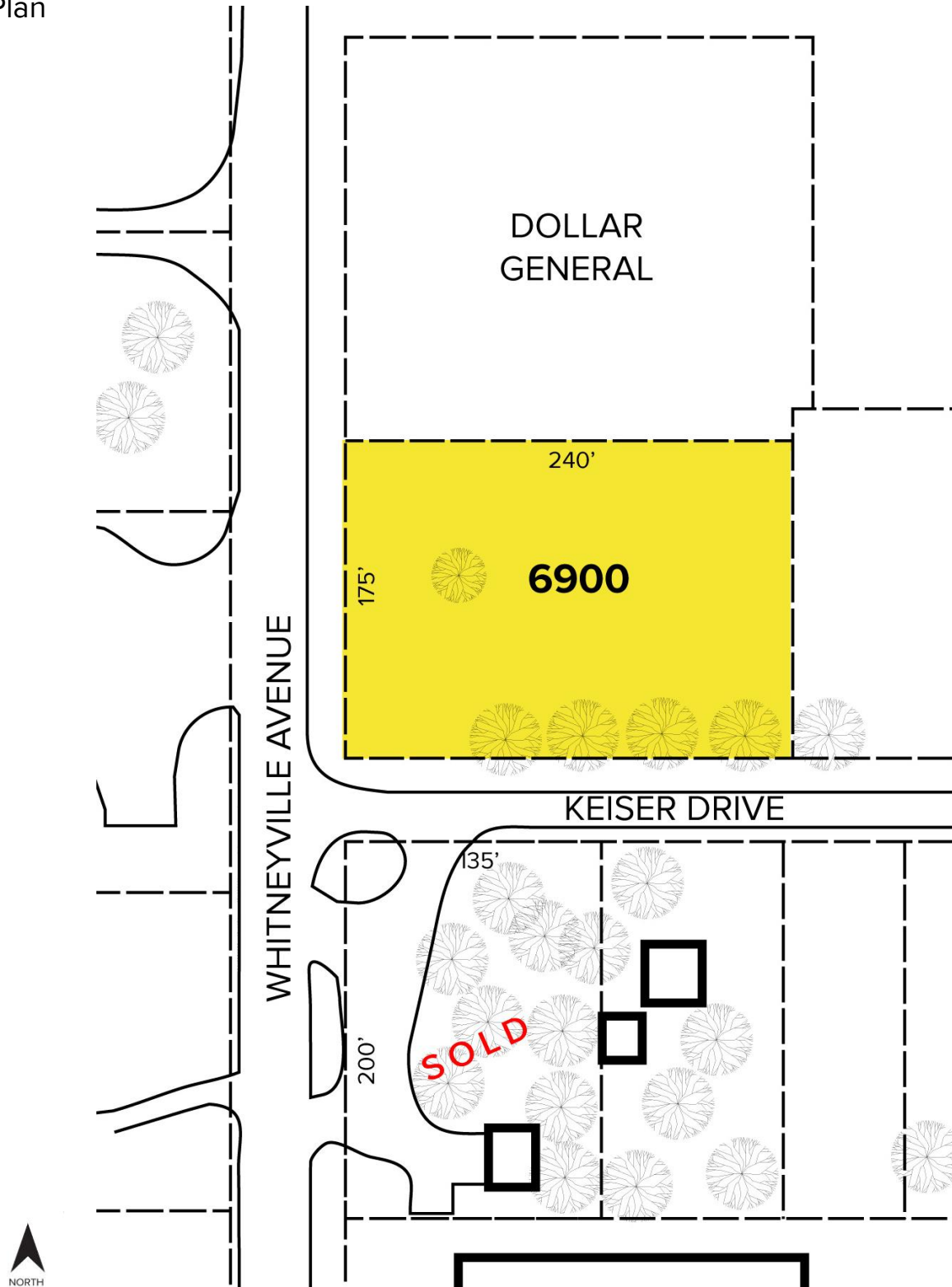
www.signatureassociates.com

6900 Whitneyville Avenue – Alto, Michigan

Vacant Land For Sale

0.96
Acres
AVAILABLE

Site Plan



For more information, please contact:

JOE RIZQALLAH

(616) 822 6310

jrizzallah@signatureassociates.com

CAROLYN BOJI

(616) 213 4560

cboji@signatureassociates.com

SIGNATURE ASSOCIATES

1188 East Paris Ave SE, Suite 220

Grand Rapids, MI 49546

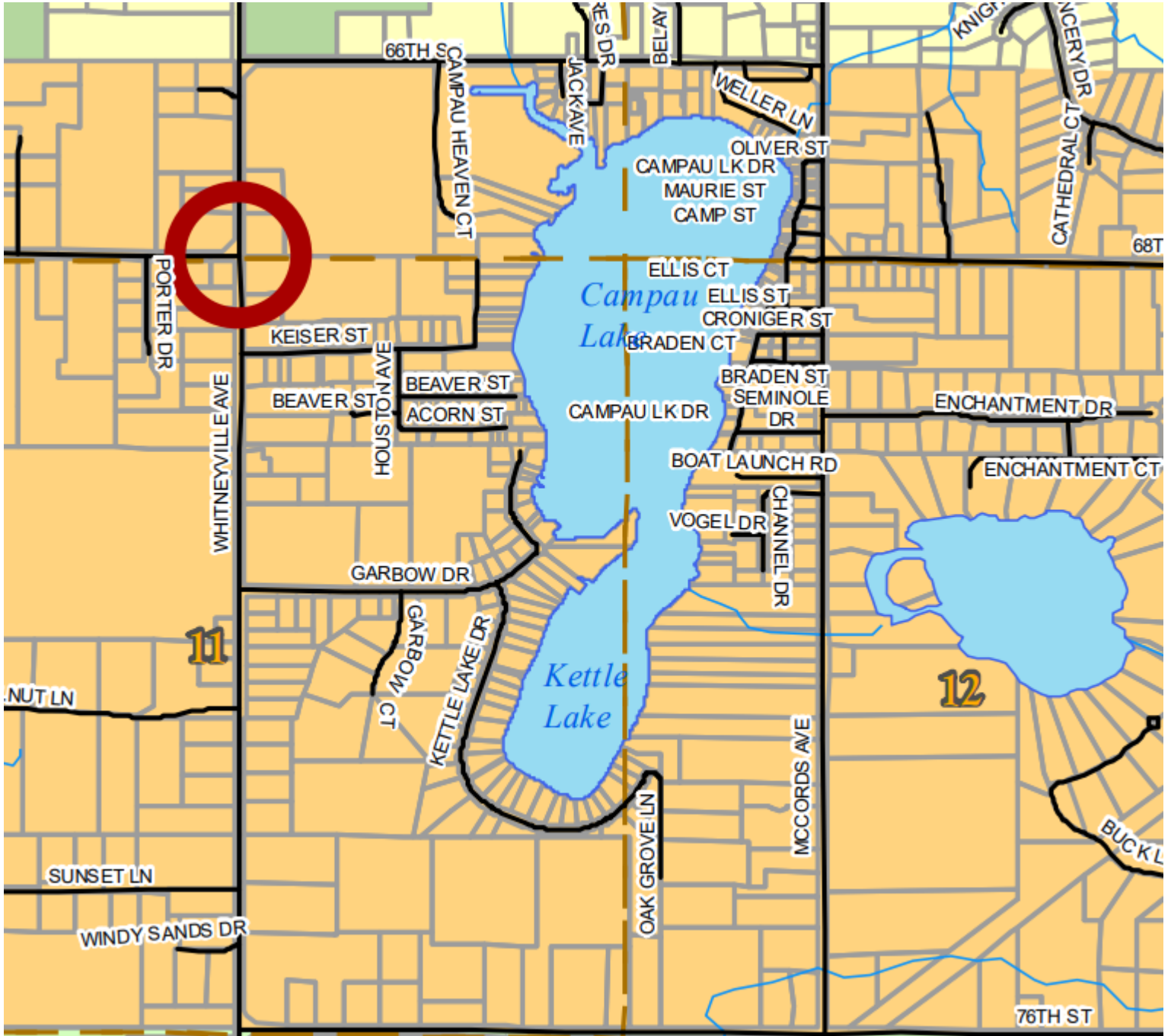
www.signatureassociates.com

6900 Whitneyville Avenue – Alto, Michigan



Vacant Land For Sale

0.96
Acres
AVAILABLE

Caledonia Township | Future Land Use



Legend

-  Neighborhood Commercial
-  Community Residential

For more information, please contact:

JOE RIZQALLAH
(616) 822 6310
jrizzqallah@signatureassociates.com

CAROLYN BOJI
(616) 213 4560
cboji@signatureassociates.com

SIGNATURE ASSOCIATES
1188 East Paris Ave SE, Suite 220
Grand Rapids, MI 49546
www.signatureassociates.com