

COMPASS

Jenn Smira  
& CO.

COMMERCIAL

# 1115 Massachusetts Ave NW

Mount Vernon Triangle | Multi-Tenant | Office Space For Lease | Parking Available



# Turn-Key Prime Office Suites in Coveted Central Downtown Location

Welcome to 1115 Massachusetts Avenue NW, a distinguished 5,899-square-foot Class B office building in a prime downtown Washington, D.C. location. This multi-tenant, low-rise brownstone offers a rare combination of historic character and modern functionality, ideal for professional office users seeking a central and accessible address. The property features three suites currently available for lease:

Lower Level Suite – Approximately 1,333 SF | \$3,450/month | Includes two private offices, a kitchen, a half bath, and a large open front room suitable for reception or collaborative work-space

Suite 200 – \$1,750/month | Offers a gracious bay-front open space, private office, and half bath

Suite 220 – \$1,750/month | Features a private office, open work area, kitchen, and half bath

Throughout the building, tenants benefit from preserved architectural details including oak hardwood floors, decorative fireplaces, bay windows, and ornate plaster ceilings, complemented by elegant finishes and modern upgrades. Systems include radiant heating, SpacePak HVAC, and security wiring, delivering a turn-key office environment. The property has been exceptionally maintained and offers 24-hour access, with 4 off-street surface parking available as well.



**Kaushik Rath**

REALTOR®,  
Senior Vice President

917.678.1307  
Kaushik.Rath@jennsmira.com



**Jenn Smira**

REALTOR®,  
Executive Vice President

202.280.2060  
jsmira@jennsmira.com



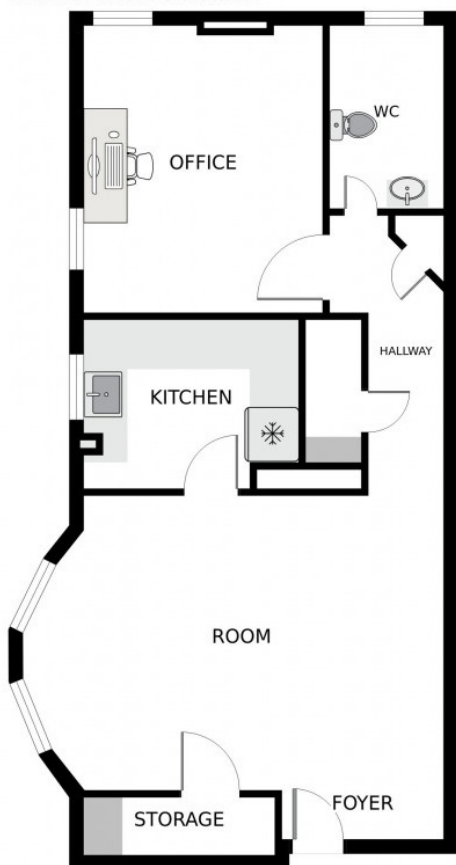
Compass Real Estate is a licensed real estate broker. All material is intended for informational purposes only and is compiled from sources deemed reliable but is subject to errors, omissions, changes in price, condition, sale, or withdrawal without notice. No statement is made as to the accuracy of any description or measurements (including square footage). This is not intended to solicit property already listed. No financial or legal advice provided. Equal Housing Opportunity. Photos may be virtually staged or digitally enhanced and may not reflect actual property conditions. Compass is licensed as Compass Real Estate in DC and as Compass in Virginia and Maryland. 1313 14th Street NW, Washington, DC 20005 | 202.386.6330



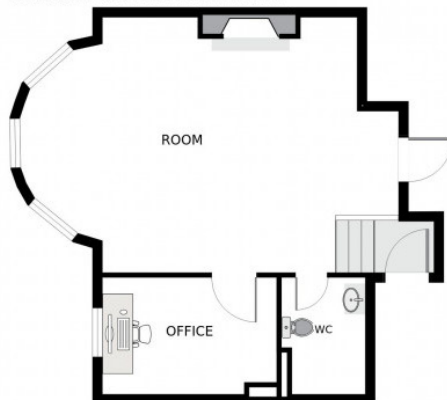
# 1115 Massachusetts Ave NW

Mount Vernon Triangle | Multi-Tenant | Office Space For Lease | Parking Available

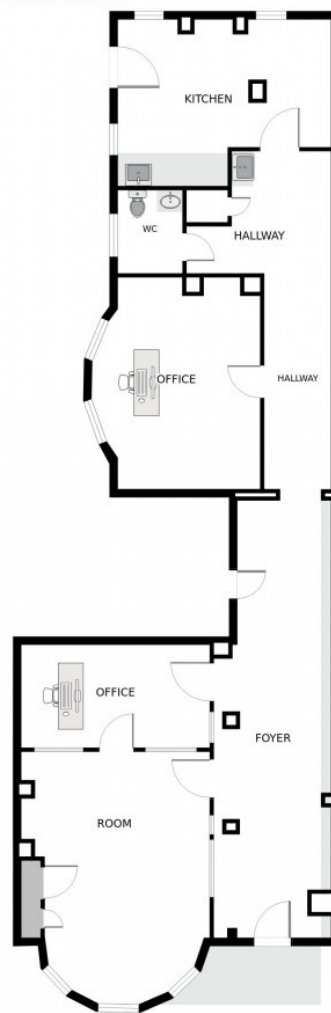
FIRST UPPER LEVEL SUITE



SECOND UPPER LEVEL SUITE



BASEMENT SUITE



Kaushik Rath

REALTOR®,  
Senior Vice President

917.678.1307  
Kaushik.Rath@jennsmira.com



Jenn Smira

REALTOR®,  
Executive Vice President

202.280.2060  
jsmira@jennsmira.com



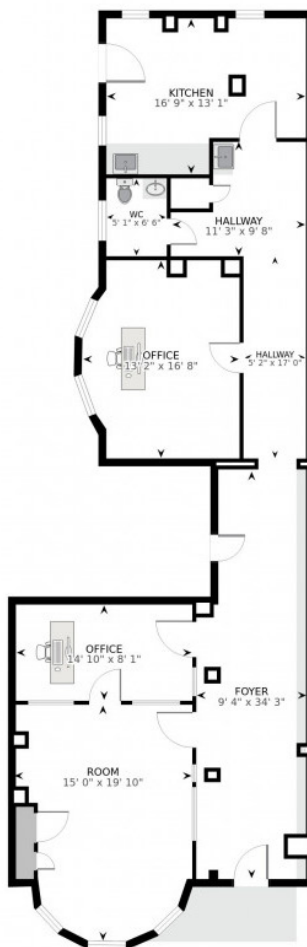
Compass Real Estate is a licensed real estate broker. All material is intended for informational purposes only and is compiled from sources deemed reliable but is subject to errors, omissions, changes in price, condition, sale, or withdrawal without notice. No statement is made as to the accuracy of any description or measurements (including square footage). This is not intended to solicit property already listed. No financial or legal advice provided. Equal Housing Opportunity. Photos may be virtually staged or digitally enhanced and may not reflect actual property conditions. Compass is licensed as Compass Real Estate in DC and as Compass in Virginia and Maryland. 1313 14th Street NW, Washington, DC 20005 | 202.386.6330



# 1115 Massachusetts Ave NW

Mount Vernon Triangle | Multi-Tenant | Office Space For Lease | Parking Available

BASEMENT SUITE Inside Area 1333 ft<sup>2</sup>



**Kaushik Rath**

REALTOR®,  
Senior Vice President

917.678.1307  
Kaushik.Rath@jennsmira.com



**Jenn Smira**

REALTOR®,  
Executive Vice President

202.280.2060  
jsmira@jennsmira.com



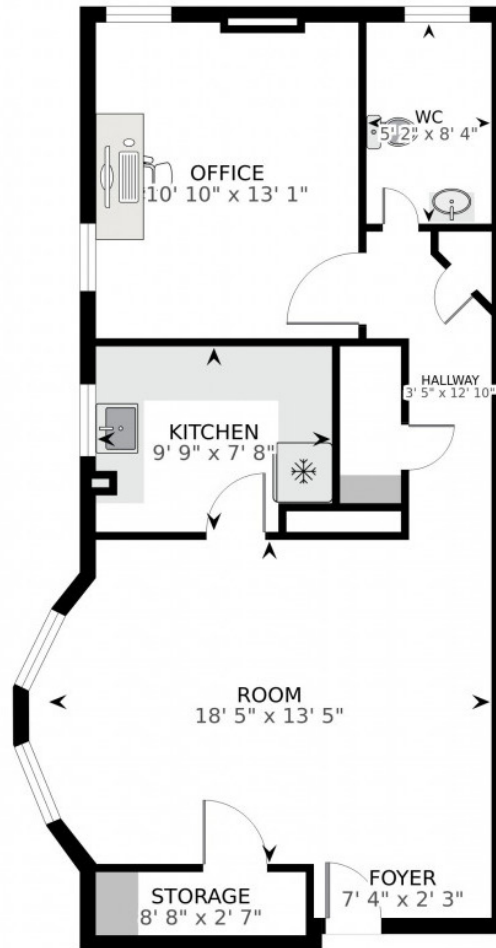
Compass Real Estate is a licensed real estate broker. All material is intended for informational purposes only and is compiled from sources deemed reliable but is subject to errors, omissions, changes in price, condition, sale, or withdrawal without notice. No statement is made as to the accuracy of any description or measurements (including square footage). This is not intended to solicit property already listed. No financial or legal advice provided. Equal Housing Opportunity. Photos may be virtually staged or digitally enhanced and may not reflect actual property conditions. Compass is licensed as Compass Real Estate in DC and as Compass in Virginia and Maryland. 1313 14th Street NW, Washington, DC 20005 | 202.386.6330



# 1115 Massachusetts Ave NW

Mount Vernon Triangle | Multi-Tenant | Office Space For Lease | Parking Available

FIRST UPPER LEVEL SUITE Inside Area 635 ft<sup>2</sup>



**Kaushik Rath**

REALTOR®,  
Senior Vice President

917.678.1307  
Kaushik.Rath@jennsmira.com



**Jenn Smira**

REALTOR®,  
Executive Vice President

202.280.2060  
jsmira@jennsmira.com



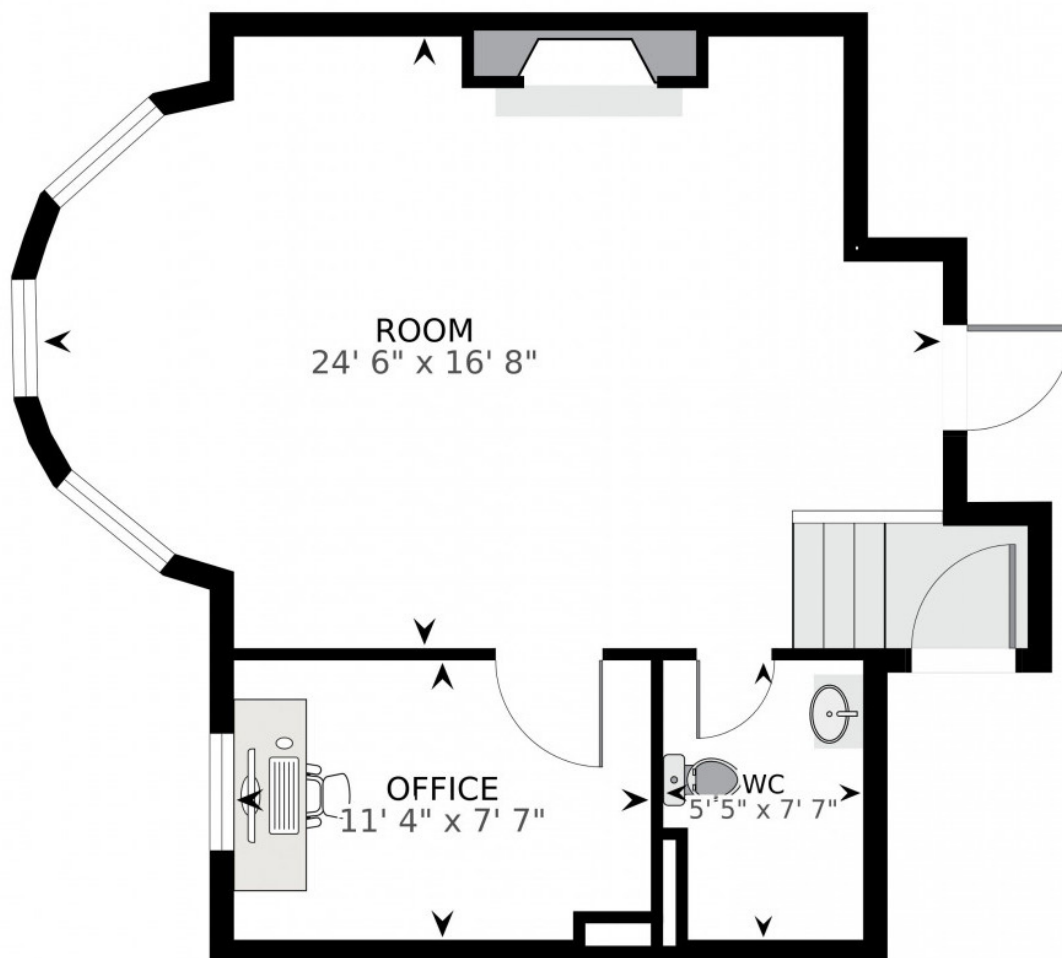
Compass Real Estate is a licensed real estate broker. All material is intended for informational purposes only and is compiled from sources deemed reliable but is subject to errors, omissions, changes in price, condition, sale, or withdrawal without notice. No statement is made as to the accuracy of any description or measurements (including square footage). This is not intended to solicit property already listed. No financial or legal advice provided. Equal Housing Opportunity. Photos may be virtually staged or digitally enhanced and may not reflect actual property conditions. Compass is licensed as Compass Real Estate in DC and as Compass in Virginia and Maryland. 1313 14th Street NW, Washington, DC 20005 | 202.386.6330



# 1115 Massachusetts Ave NW

Mount Vernon Triangle | Multi-Tenant | Office Space For Lease | Parking Available

SECOND UPPER LEVEL SUITE Inside Area 501 ft<sup>2</sup>



**Kaushik Rath**

REALTOR®,  
Senior Vice President

917.678.1307  
Kaushik.Rath@jennsmira.com



**Jenn Smira**

REALTOR®,  
Executive Vice President

202.280.2060  
jsmira@jennsmira.com



Compass Real Estate is a licensed real estate broker. All material is intended for informational purposes only and is compiled from sources deemed reliable but is subject to errors, omissions, changes in price, condition, sale, or withdrawal without notice. No statement is made as to the accuracy of any description or measurements (including square footage). This is not intended to solicit property already listed. No financial or legal advice provided. Equal Housing Opportunity. Photos may be virtually staged or digitally enhanced and may not reflect actual property conditions. Compass is licensed as Compass Real Estate in DC and as Compass in Virginia and Maryland. 1313 14th Street NW, Washington, DC 20005 | 202.386.6330

