

FOR LEASE

THE CENTRAL BUILDING

RETAIL / RESTAURANT SPACE

160 S. Park & 860 Pearl St - Eugene, OR

Available Space

- **RETAIL - 860 Pearl St:** 2,522 square feet
Restaurant with hood
~~\$1.90/SF/NNN~~

REDUCED RATE: \$1.75/SF, NNN (NNN: \$0.37)

For more information contact:

BILLY POLLOCK

billyp@campbellre.com | (541) 285-8865

Licensed in the State of Oregon

BEN WANICHEK

benw@campbellre.com | (541) 520-0067

Licensed in the State of Oregon



www.campbellre.com

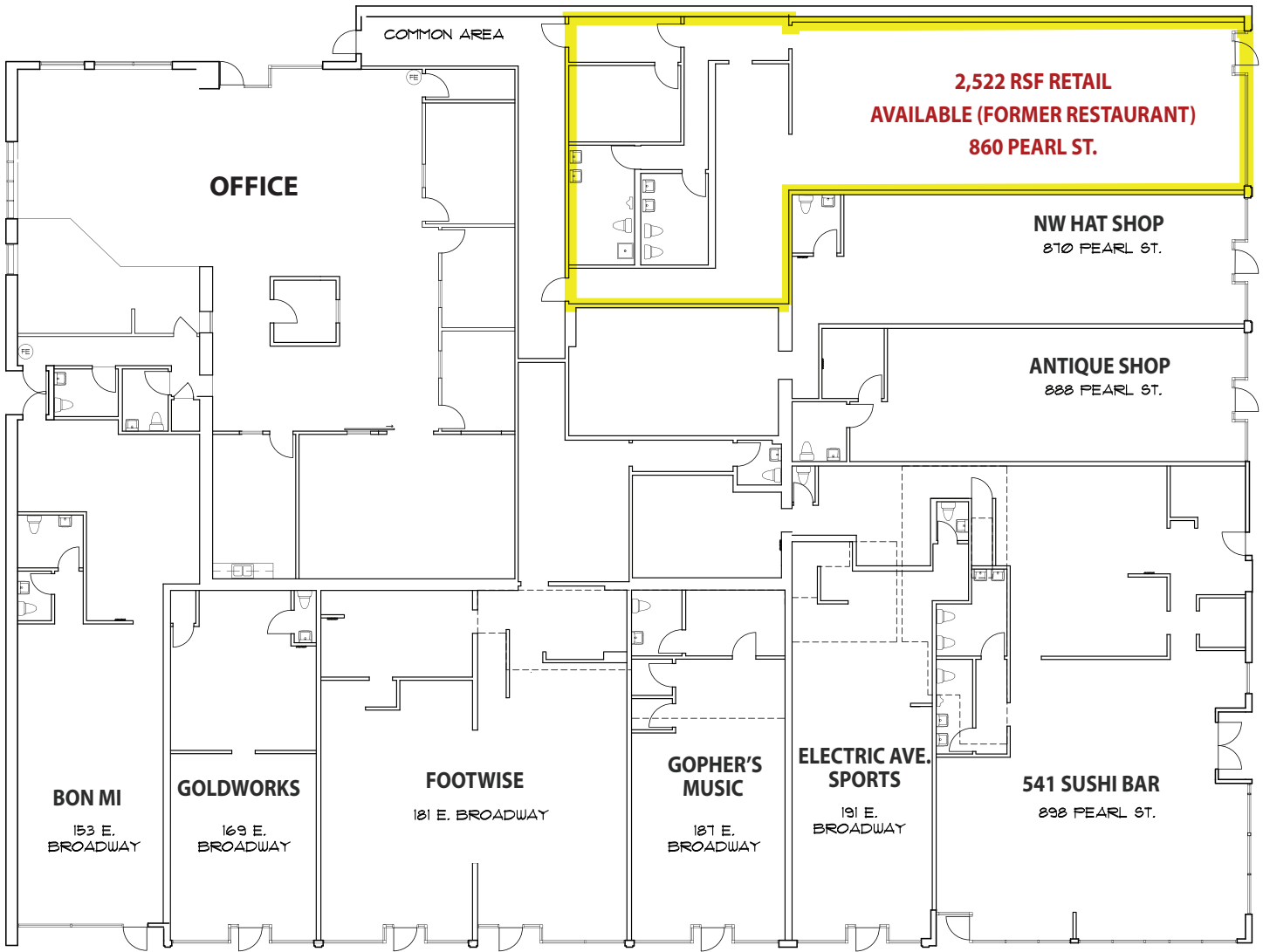


Building Highlights

- Excellent downtown location
- High visibility
- Neighbor tenants: Ambrosia, Footwise, 541 Sushi, Bon Mi, J. Micheals Bookstore, Passion Flower, The Miner Building

The information in this package was obtained from sources deemed reliable, and is not guaranteed by agent. Package is subject to change, error or omission, prior sale or lease, correction or withdrawal. Any party contemplating purchase is urged to conduct their own independent study and inspection.

CENTRAL BUILDING FLOOR PLAN



The information in this package was obtained from sources deemed reliable, and is not guaranteed by agent. Package is subject to change, error or omission, prior sale or lease, correction or withdrawal. Any party contemplating purchase is urged to conduct their own independent study and inspection.

CENTRAL BUILDING LOCATION MAP



The information in this package was obtained from sources deemed reliable, and is not guaranteed by agent. Package is subject to change, error or omission, prior sale or lease, correction or withdrawal. Any party contemplating purchase is urged to conduct their own independent study and inspection.