

FOR SUBLEASE

2132 SACRAMENTO ST
LOS ANGELES, CA 90021

±5,600 SF
INDUSTRIAL BUILDING



For more information, please contact:

Daniel Park

(213) 446-0396

Danielpark777@hotmail.com

DRE# 01227056

PARK INDUSTRIAL
SPECIALIZING IN INDUSTRIAL REAL ESTATE SERVICES

Park Industrial Realty
800 McGarry St, 5th Floor
Los Angeles, CA 90021
Corporation DRE# 01983713

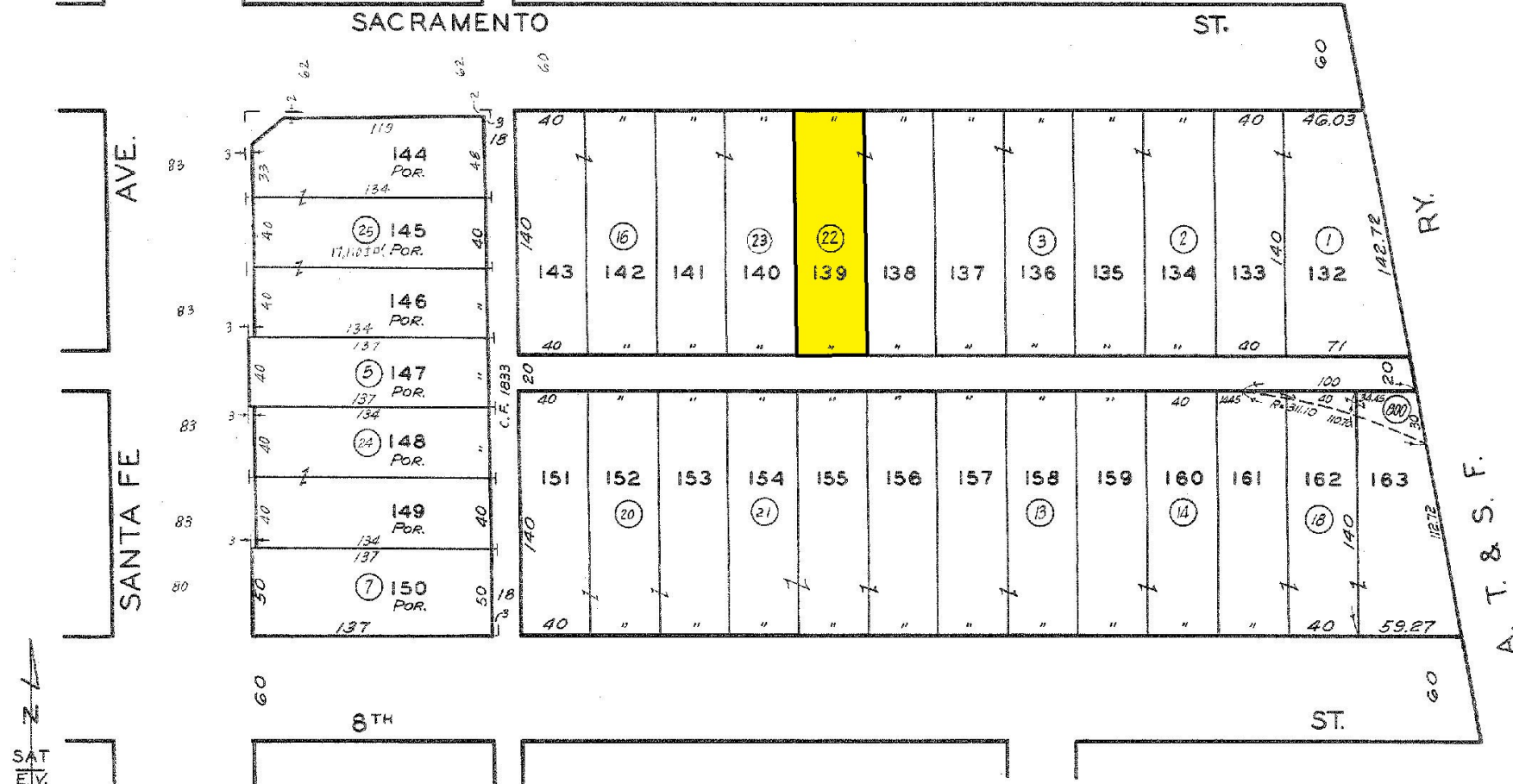
Building SF:	5,600 SF	• Beautifully renovated creative space
Year Built:	1924	• Excellent Downtown LA Arts District location
Clear Height:	15'	• 15' minimum clear height
Power:	200a, 120v, 1p	• Thoughtfully partitioned into a workshop area and open office space using elegant glass wall
Loading:	1 DH	• Dock high loading
Zoning:	M3	• Beautifully remodeled kitchen & restroom
Lease Rate:	\$8,500 (\$1.52/SF) Gross	• Perfect for artist
		• Sublease until 12/31/2026
		• Longer term possible

All information has been furnished from sources which we deem reliable, but for which we assume no liability. All measurements are approximate. Broker/Owner do not warrant its accuracy. Buyer/Lessee must verify all information.

5166 6
SCALE 1" = 60'

2011

666920 5-11-59
780007912
91071006001001-23
2000050204001001-23
030121
28100119
20100713



**M.L. WICKS SUBDIVISION OF THE
GARBOLINO-COOPER & SOUTH & PORTER TRACTS**

M. R. 16 - 73

CODE
15117

FOR PREV. ASSM'T. SEE: 1093-6

ASSESSOR'S MAP
COUNTY OF LOS ANGELES, CALIF.

