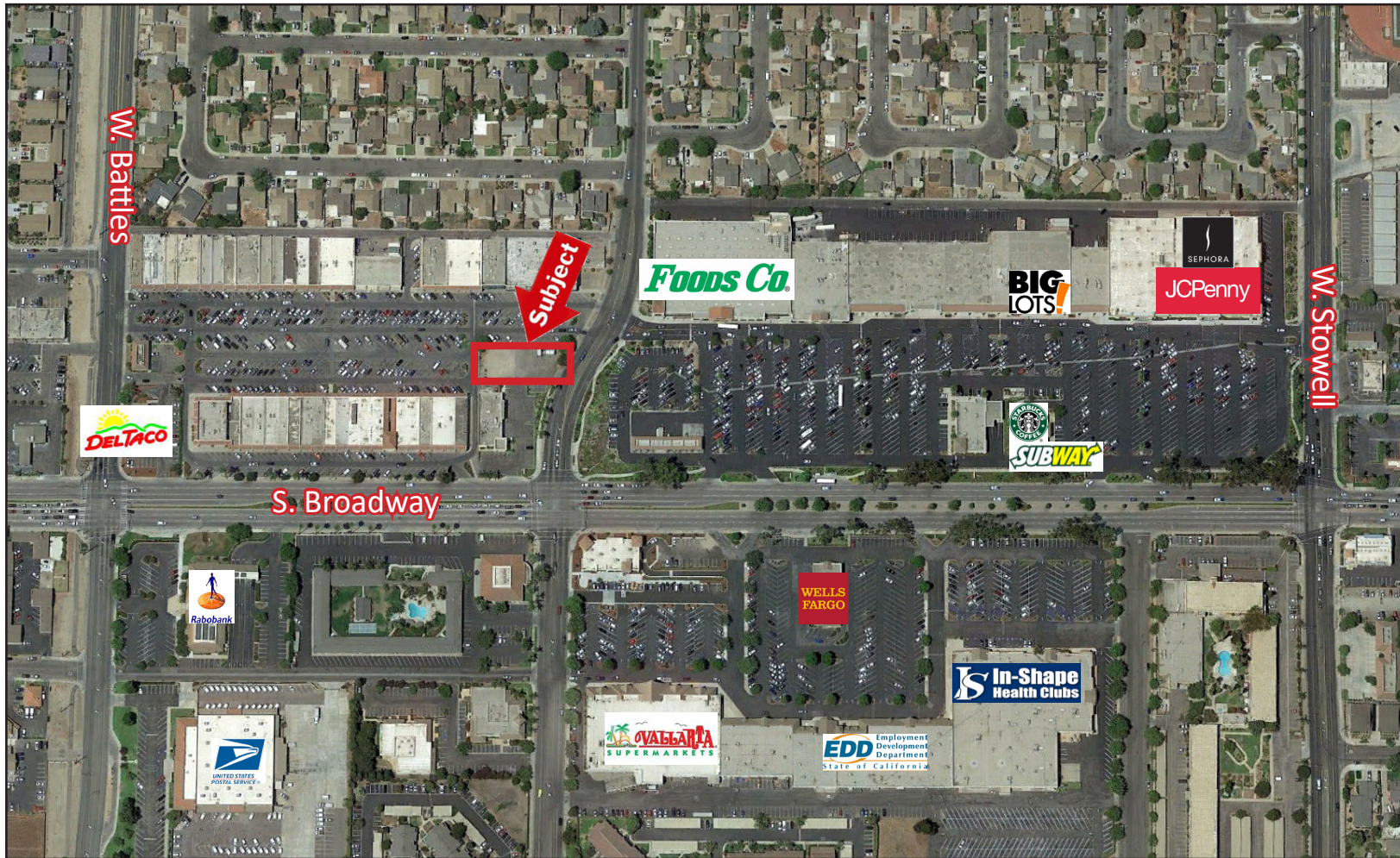


FOR SALE VACANT LAND | ±12,632 SF



116 W. Enos Drive | Santa Maria, CA

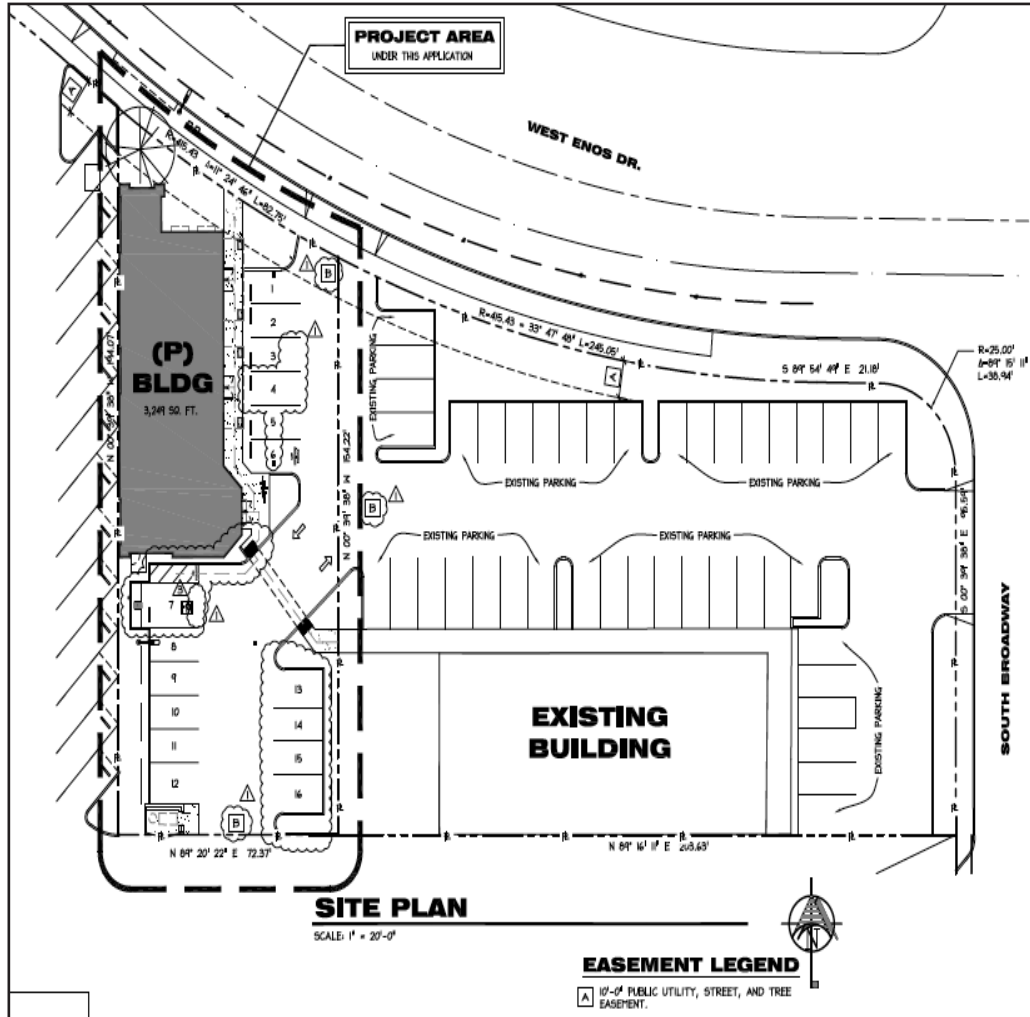
Brian LaCabe
805.928.2800, ext. 103
BLacabe@PacificaCRE.com
BRE # 01026699



Information contained herein has been obtained from the owner of the property or from other sources deemed reliable. We have no reason to doubt its accuracy, but we do not guarantee it.

PO Box 250 | Santa Maria, CA 93456 | PacificaCommercialRealty.com

FOR SALE 116 W. Enos Drive | Santa Maria, CA



Prime commercial lot for sale at northern side “Stowell Center Plaza” on West Enos Drive (See aerial). Previously entitled for a ±3,250 square foot retail/office building. Excellent opportunity for an owner user or a small development project. Call listing agent for additional information.

Property Details

- Price: \$600,000.00
- Parcel Size: ±12,632 SF (0.28 acres)
- Zoning: PD-C1 (Central Business District)
- APN: 117-300-084
- Traffic Counts: S. Broadway/Battle - 27,000 ADT

Brian LaCabe
805.928.2800, ext. 103
BLacabe@PacificaCRE.com
BRE # 01026699

