



4671 and 4675 Marlena  
Bossier City, LA 71111

Industrial  
Property  
For Lease



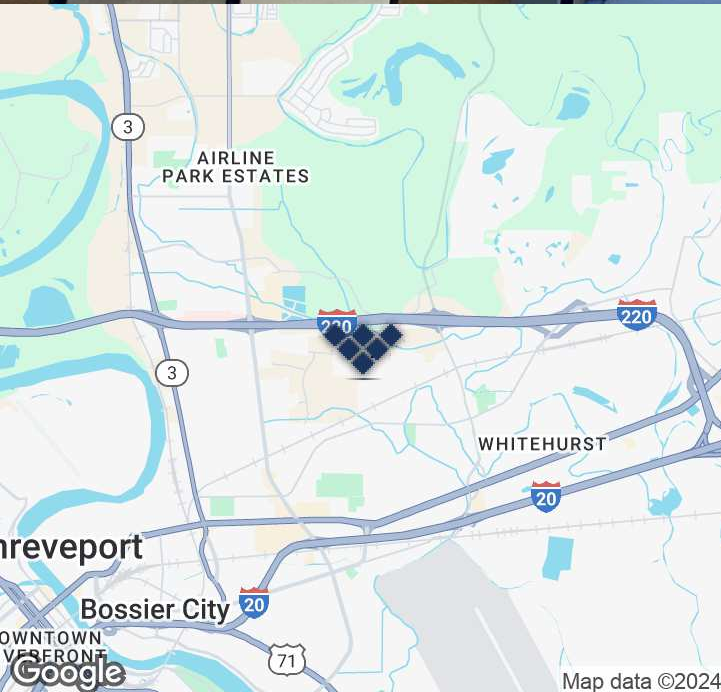
4671 and 4675 Marlena  
2,013 - 14,090 SF

**Melissa Riddick, SIOR**  
Direct 318.698.1110  
Mobile 318.218.4987  
MelissaR@Sealynet.com

**Roland Ricou**  
Direct 318.698.1109  
Mobile 318.773.3357  
RolandR@Sealynet.com

**Sealy Real Estate Services**  
333 Texas Street, Suite 1050  
Shreveport, LA 71101  
318.222.8700  
www.sealynet.com

All information set forth in this brochure has been obtained from the owner, personal observation, or other reliable sources. Sealy Real Estate Services, LLC does not guarantee the accuracy of this information and makes no representations or warranties, expressed or implied, in this brochure. Information contained herein is subject to change without notice.



### Offering Summary

Lease Rate:	\$2,684.00 - 4,557.00 per month (MG)
Total SF:	26,186 SF
Number of Units:	10

### Location Overview

Located less than a mile from Interstate I-220 and under five miles from Interstate I-20, this industrial property in Bossier City, LA, offers unparalleled accessibility for businesses. Its strategic location ensures swift transportation connections, facilitating efficient distribution networks and easy access to regional markets. With its proximity to these key interstates, this property provides an ideal hub for a variety of operations, maximizing convenience and connectivity for businesses.

**Sealy Real Estate Services**  
333 Texas Street, Suite 1050  
Shreveport, LA 71101  
318.222.8700  
[www.sealynet.com](http://www.sealynet.com)

**Melissa Riddick, SIOR**  
Direct 318.698.1110  
Mobile 318.218.4987  
[MelissaR@Sealynet.com](mailto:MelissaR@Sealynet.com)

**Roland Ricou**  
Direct 318.698.1109  
Mobile 318.773.3357  
[RolandR@Sealynet.com](mailto:RolandR@Sealynet.com)

All information set forth in this brochure has been obtained from the owner, personal observation, or other reliable sources. Sealy Real Estate Services, LLC does not guarantee the accuracy of this information and makes no representations or warranties, expressed or implied, in this brochure. Information contained herein is subject to change without notice.



### Property Description

Office/service/warehouse spaces in brand new development (built 2023). There are 10 individual spaces ranging from 2,013 square feet to 3,528 square feet. Each suite has an office area consisting of a reception, one private office, a restroom, and a kitchenette. The warehouse area has 18' sidewalls with one 12' x 14' overhead door, 18' clear height (rear of space) to 22' clear height (front), and LED lighting throughout the suite. Tenant pays utilities (electric, phone, internet), and janitorial. Water and city trash bin included in rent. Please contact the agent for more information about this listing.

Building Name	4671 and 4675 Marlena
Property Type	Industrial
Property Subtype	Flex Space
APN	163342
Building Size	26,186 SF
Lot Size	4+ Acres
Number of Floors	1

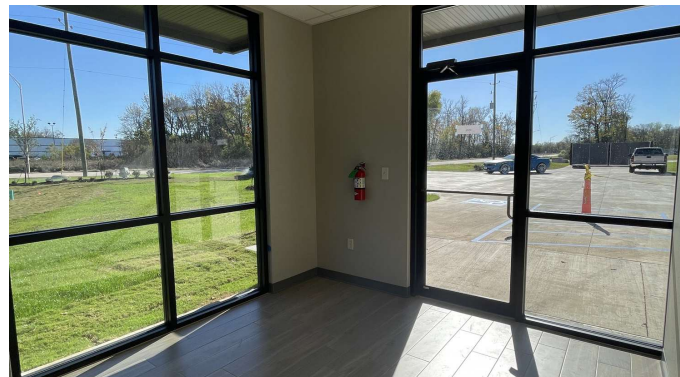


**Lease Information**

Lease Type:	MG	Lease Term:	Negotiable
Total Space:	2,013 - 3,528 SF	Lease Rate:	\$2,684.00 - \$4,557.00 per month

**Available Spaces**

Suite	Tenant	Total Size (SF)	Lease Type	Lease Rate
■ 103	Available	3,517 - 14,090 SF	Modified Gross	\$4,543 per month
■ 104	Available	3,528 - 14,090 SF	Modified Gross	\$4,557 per month
■ 501	Available	2,022 - 12,096 SF	Modified Gross	\$2,900 per month
■ 502	Available	2,013 - 12,096 SF	Modified Gross	\$2,684 per month
■ 503	Available	2,013 - 12,096 SF	Modified Gross	\$2,684 per month
■ 504	Available	2,013 - 12,096 SF	Modified Gross	\$2,684 per month
■ 505	Available	2,013 - 12,096 SF	Modified Gross	\$2,684 per month



**Sealy Real Estate Services**  
333 Texas Street, Suite 1050  
Shreveport, LA 71101  
318.222.8700  
[www.sealynet.com](http://www.sealynet.com)

**Melissa Riddick, SIOR**  
Direct 318.698.1110  
Mobile 318.218.4987  
[MelissaR@Sealynet.com](mailto:MelissaR@Sealynet.com)

**Roland Ricou**  
Direct 318.698.1109  
Mobile 318.773.3357  
[RolandR@Sealynet.com](mailto:RolandR@Sealynet.com)

All information set forth in this brochure has been obtained from the owner, personal observation, or other reliable sources. Sealy Real Estate Services, LLC does not guarantee the accuracy of this information and makes no representations or warranties, expressed or implied, in this brochure. Information contained herein is subject to change without notice.