

Downtown Willow Glen Retail/Office

Freestanding building for lease

2,889± SF Retail/Office/Medical Office Building For Lease

DAVID TAXIN

Partner

Lic. #00983163

408.966.5919

dtaxin@moinc.net

BOBBY FACCHINO

Senior Associate

Lic. # 02178873

408.318.0623

bobby@moinc.net



1114 Brace Ave., San Jose



PROPERTY OVERVIEW



Rent: \$3.75 PSF, plus NNN

BUILDING AREA: 2,889± SF

Property Type: Retail/Office/Medical Office

LAND AREA: 3,255± SF

YEAR BUILT: 1959

PARCEL NUMBER (APN): 429-17-030

Zoning: CP - Commercial Pedestrian

of Units: 2

RARE DOWNTOWN WILLOW GLEN OPPORTUNITY

2,889± SF Freestanding Retail/Office/Medical Office Building
For Lease

- RARE DOWNTOWN WILLOW GLEN LEASING OPPORTUNITY
- 2,889± SF Freestanding Retail/Office/Medical Office Building
- Rent is \$3.75 PSF NNN
- 1114 Brace Ave, San Jose presents a leasing opportunity to acquire a 2,889± square foot freestanding retail/office/medical office building with two units of which can be combined or separated.
- The property is situated on a 3,255± square foot lot with a large parking lot directly behind the building.
- The property is in the CP – Commercial Pedestrian zoning designation which allows for uses such as, professional office, medical office, retail services, personal services, veterinary clinics, and many more.
- The property is currently vacant, allowing for immediate occupancy.
- The property is located on Brace Avenue 1 parcel from Lincoln Avenue in the heart of Downtown Willow Glen.
- Extremely strong demographics with household incomes in excess of \$169,000 in a 1-mile radius.

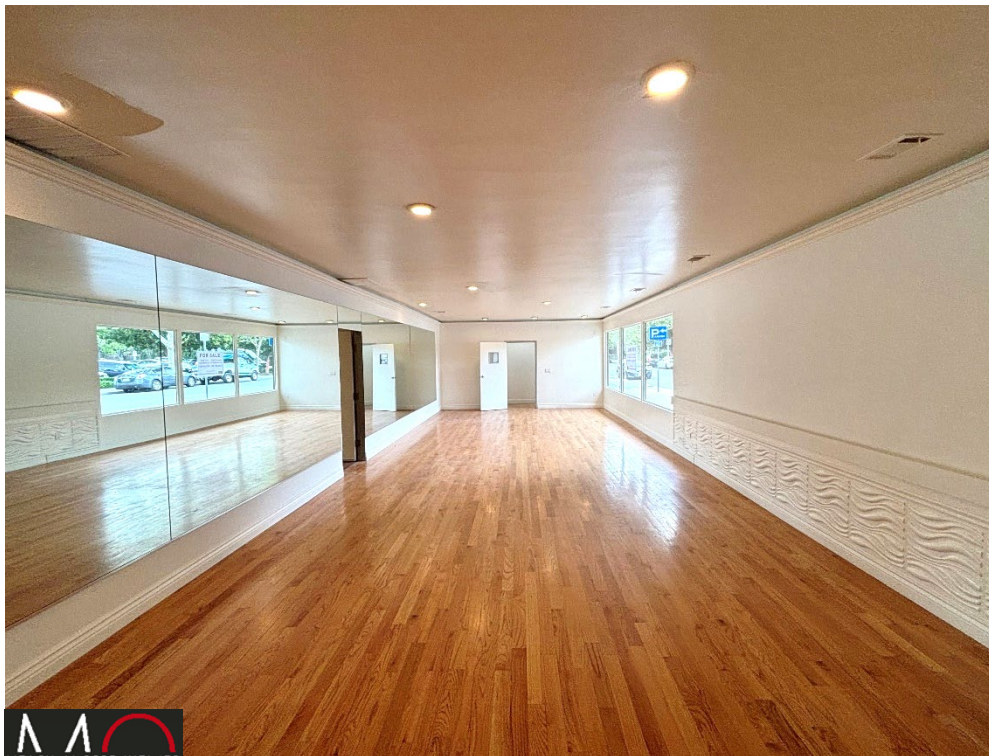


Minnesota Ave

Lincoln Avenue

BERTUCELLI'S
La Villa

Brace Ave



















Lincoln Ave

Brace Ave





Downtown San Jose

Lincoln Avenue

Minnesota Ave

Brace Ave





Minnesota Ave

Lincoln Avenue

Brace Ave

DEMOGRAPHICS



2024 SUMMARY	1-MILE	5-MILE	10-MILE
Population	23,763	674,649	1,524,300
Households	9,641	229,274	509,627
Average Household Size	2.4	2.8	2.9
Owner Occupied Housing Units	5,395	109,478	280,901
Renter Occupied Housing Units	3,915	114,314	216,860
Median Age	42.1	37.8	38.8
Median Household Income	\$140,569	\$111,936	\$135,913
Average Household Income	\$169,228	\$142,976	\$162,976

1114 Brace Ave., San Jose

DAVID TAXIN

Partner
Lic. #00983163
408.966.5919
dtaxin@moinc.net

BOBBY FACCHINO

Senior Associate
Lic. #02178873
408.318.0623
bobby@moinc.net

MEACHAM/OPPENHEIMER, INC.
8 N San Pedro St. #300
San Jose, CA 95110
Tel. 408.378.5900
www.moinc.net

