

# CHERRY STREET STUDIO/ASSEMBLY BUILDING FOR LEASE



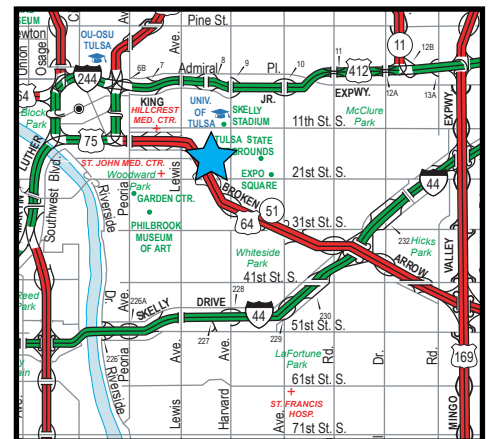
2908 E 15TH ST TULSA, OK 74104

## SIZES

- 5,526 Gross SF 2 level building  
(See Floor Plan)

## FEATURES

- Former Dance Studio/Church
- 2 Large studio sections and ADA restrooms
- Remodeled in 2019
- Fully Sprinklered building
- CH (Commercial Heavy) Zoning
- On-site parking (limited); additional parking potential with adjacent neighbor tenants
- Cherry Street location between Lewis and Harvard
- New Street Rehab with Improve our Tulsa tax, new parking lane planned along Cherry Street



*The information contained herein is believed to be accurate but is not guaranteed as to accuracy and may change or be updated without notice.*

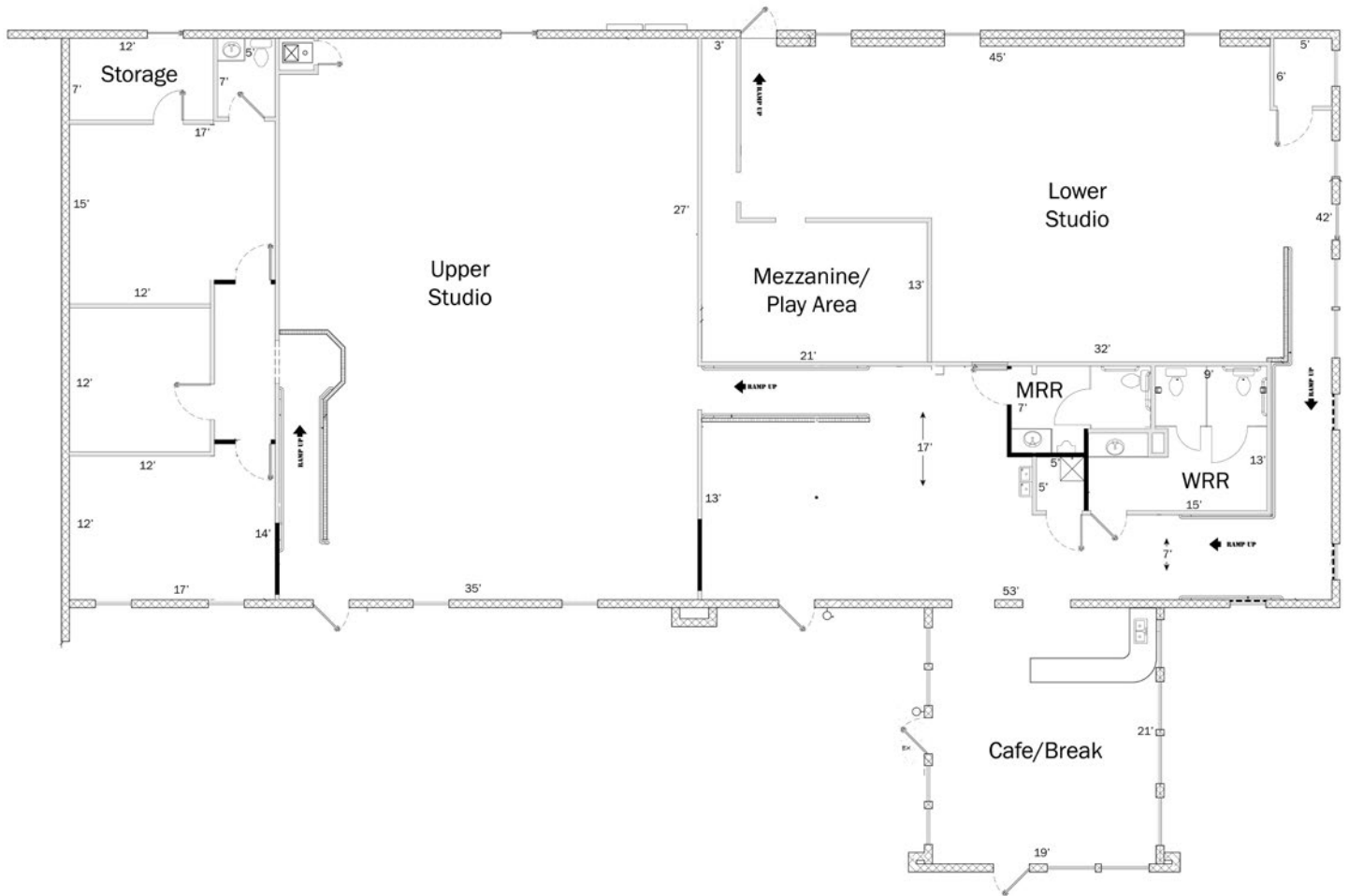
**Contact:** Monty Berry, CCIM, SIOR

Office (918) 280-9900 | Cell (918) 695-4162 | Fax (918) 280-9902

E-mail [Monty@EquitasRealty.com](mailto:Monty@EquitasRealty.com)



# Floorplan



# Aerial



## Photos



**Building Exterior**



**Cafe/Break Entry**



**Building Exterior**



**Cafe/Break**



**Upper Studio**



**Lower Studio**