

# 195 MONTAGUE STREET

---

Brooklyn Heights 10<sup>th</sup> Floor Available  
Brooklyn and Manhattan Views

Built-to-suit Available | Exterior Building Signage Potential  
10<sup>th</sup> floor of 20,000 SF | Potential for up to 40,000 SF contiguous

**Will Divide From 5,000 RSF**

---



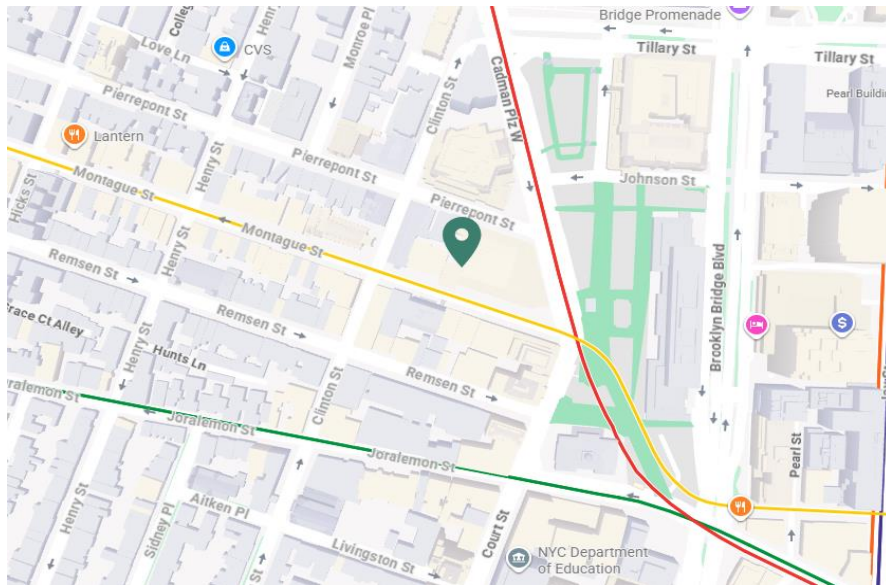


Entire 10th floor:

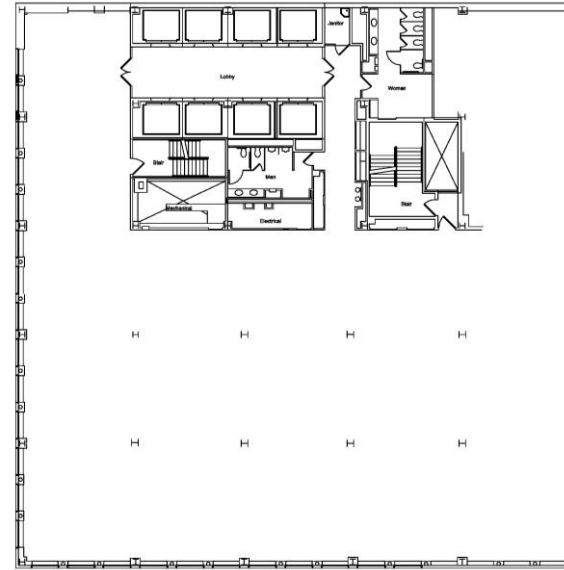
## 20,000 RSF - Now Divisible From 5,000 RSF

- Built-to-suit available
- Blocks away from Brooklyn Heights Promenade
- Along Montague Street corridor, across the street from Cadman Plaza and one block from 2 3 4 5 R trains at Court Street / Borough Hall

Central Brooklyn Heights Location



Floor Plan – Entire 10<sup>th</sup> Floor



Leasing Contact:

Kraig Silver, Executive Vice President

516-837-8070

[Kraig.Silver@treelinecompanies.com](mailto:Kraig.Silver@treelinecompanies.com)