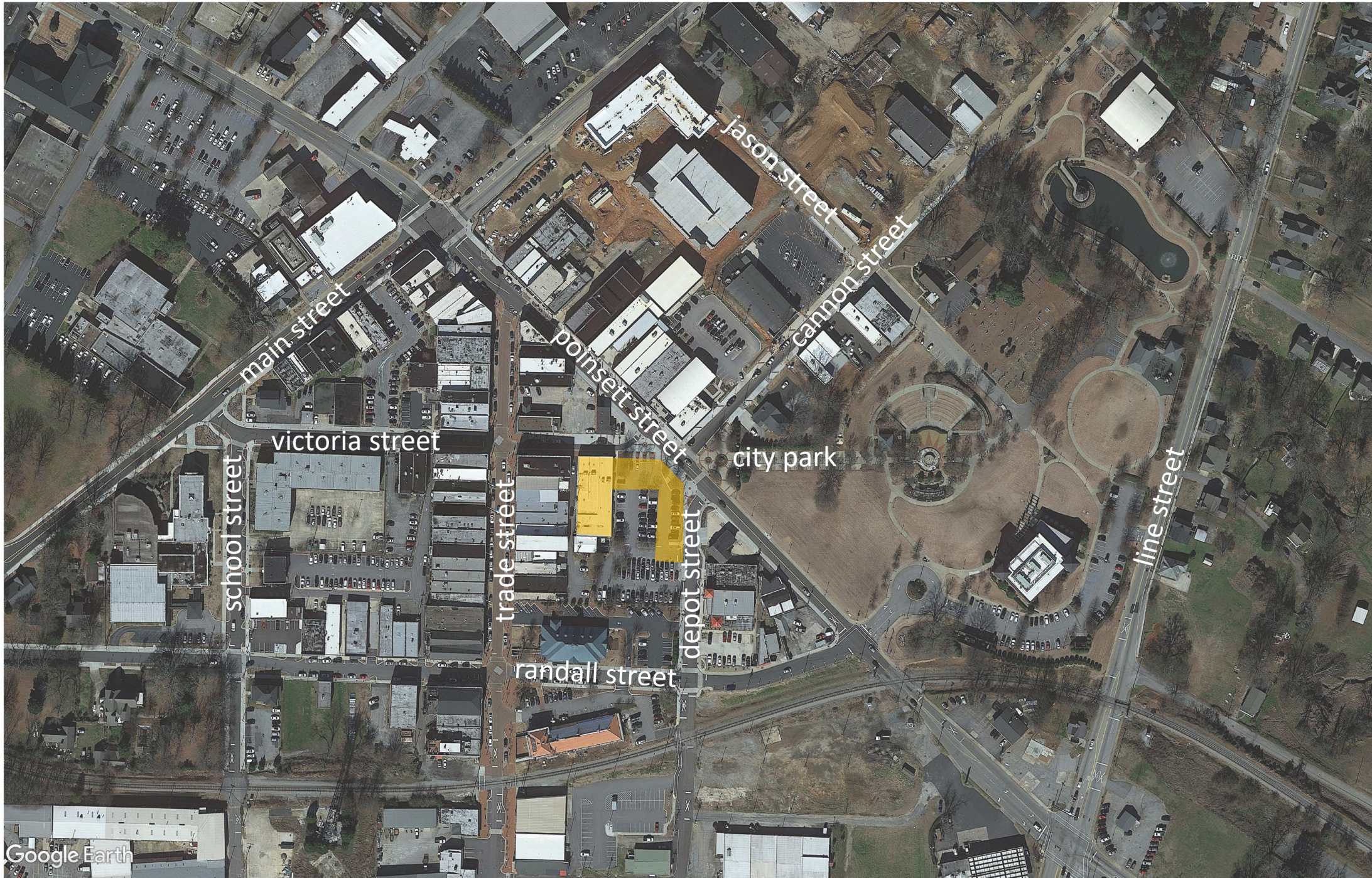


An aerial photograph of Greer, South Carolina, taken during the golden hour of sunset. The town is densely packed with brick and stone buildings, interspersed with green trees. A prominent white water tower stands on the right side of the town. In the foreground, there is a large green lawn and a parking lot filled with cars. The background shows rolling hills under a sky with soft, orange and yellow light. Overlaid on the center of the image is a logo consisting of a stylized blue wave above the word "Greer" in a bold, black, sans-serif font, and "City of Greer, SC" in a black, italicized serif font below it.

Greer
City of Greer, SC



GREER STATION

context | dining | seating | public space



Greer
City of Greer, SC



setback upper levels

corner protrudes

stucco panels

brick

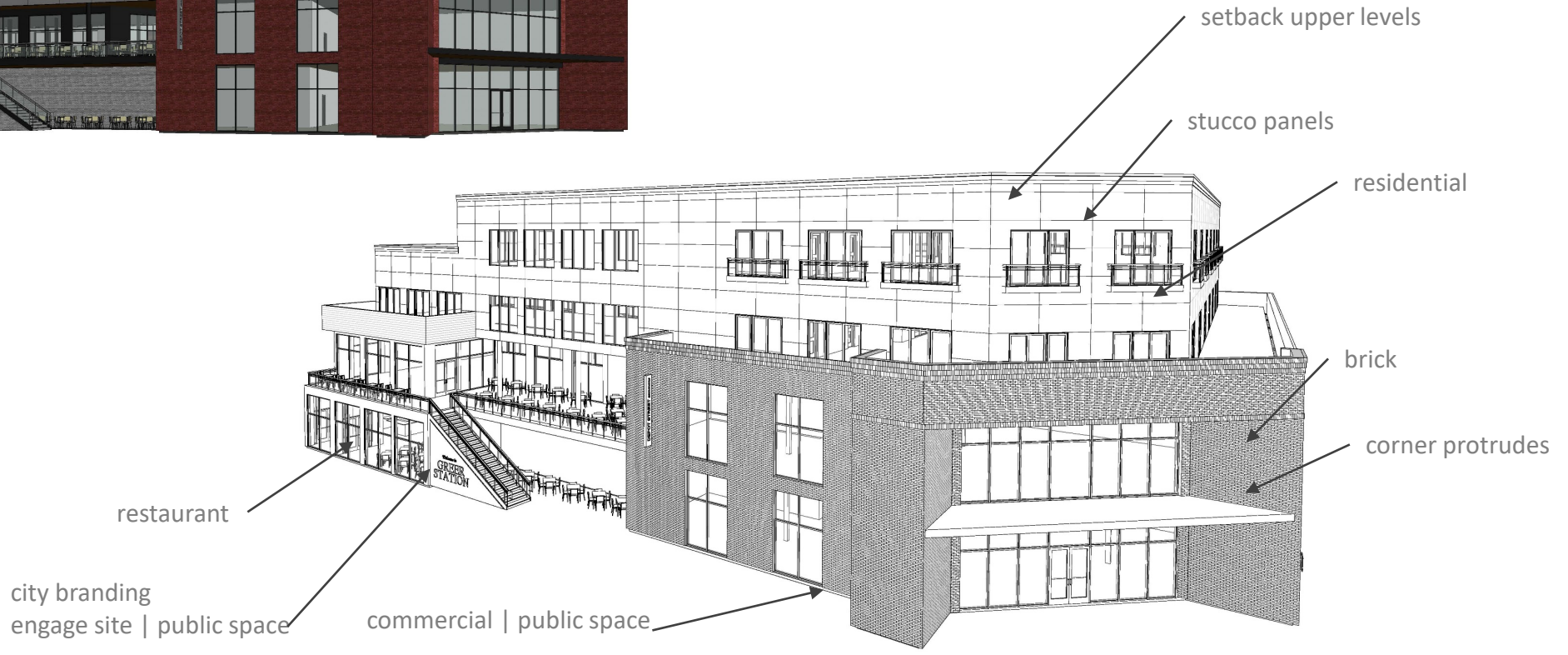
residential

commercial | public space

city branding
engage site | public space

case study: superior, colorado

<https://ktgy.com/ktgy-unveils-designs-for-downtown-superiors-main-street-mixed-use-portion/>



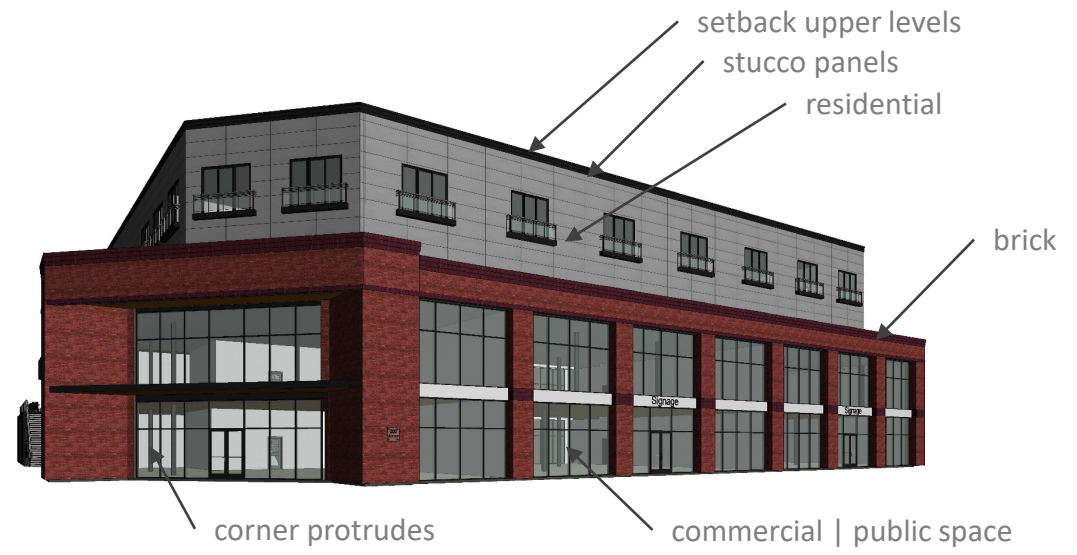
view from east poinsett + depot



water feature | public courtyard

restaurant

view from victoria + courtyard



setback upper levels
stucco panels
residential

brick

corner protrudes
commercial | public space

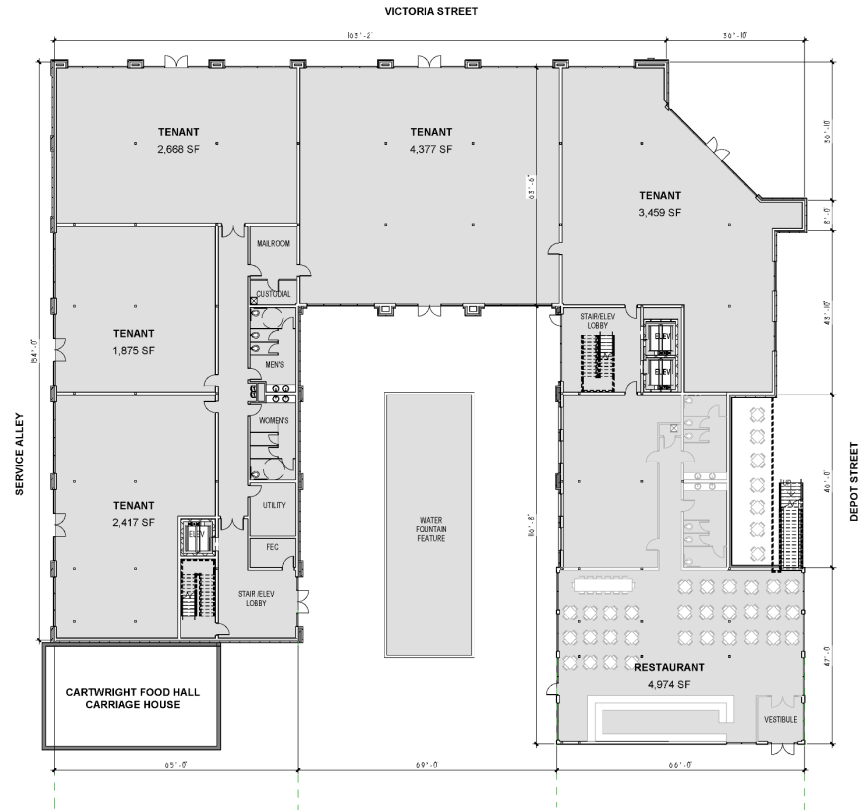


residential

commercial | public space

Retail | engage alley

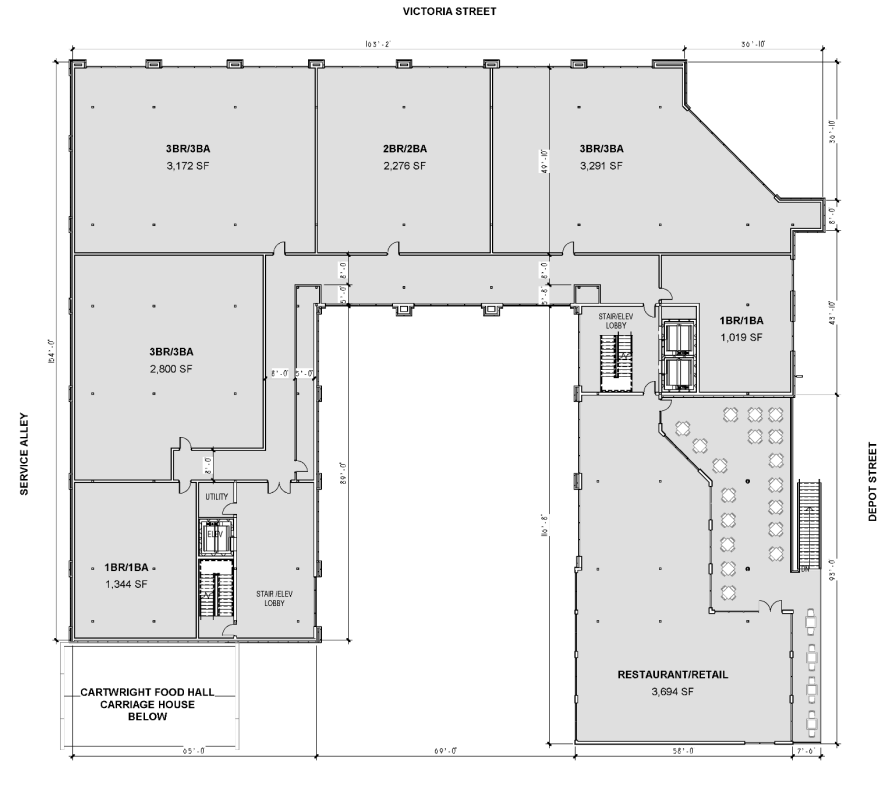
view from victoria + alley



CITY OF GREER PARKING LOT

gross 23,986 sf
terrace n/a

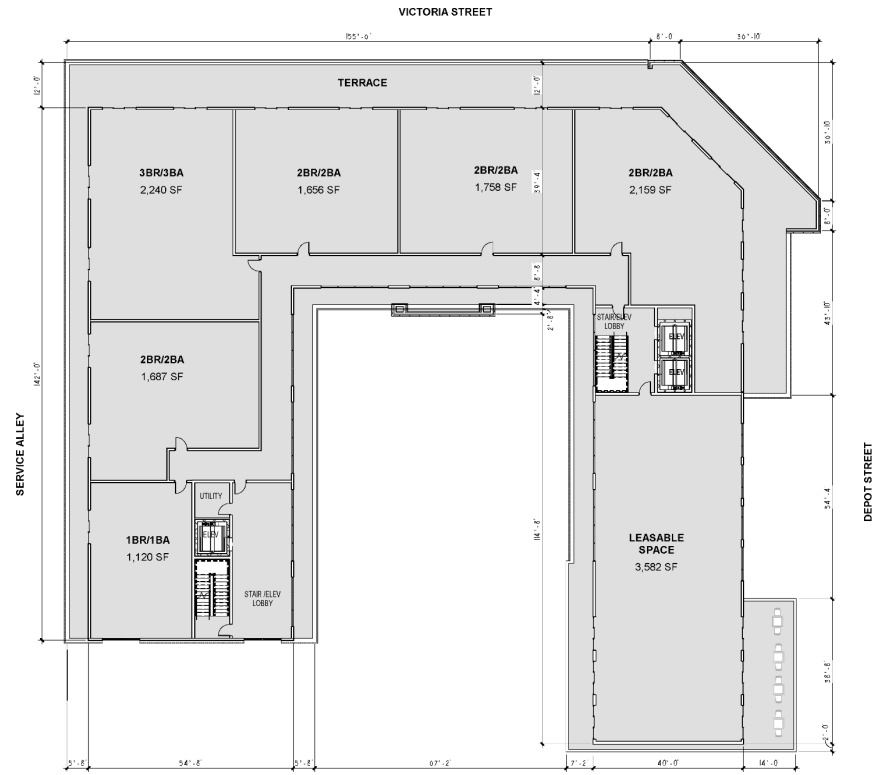
level I – public/commercial/retail/restaurant



CITY OF GREER PARKING LOT

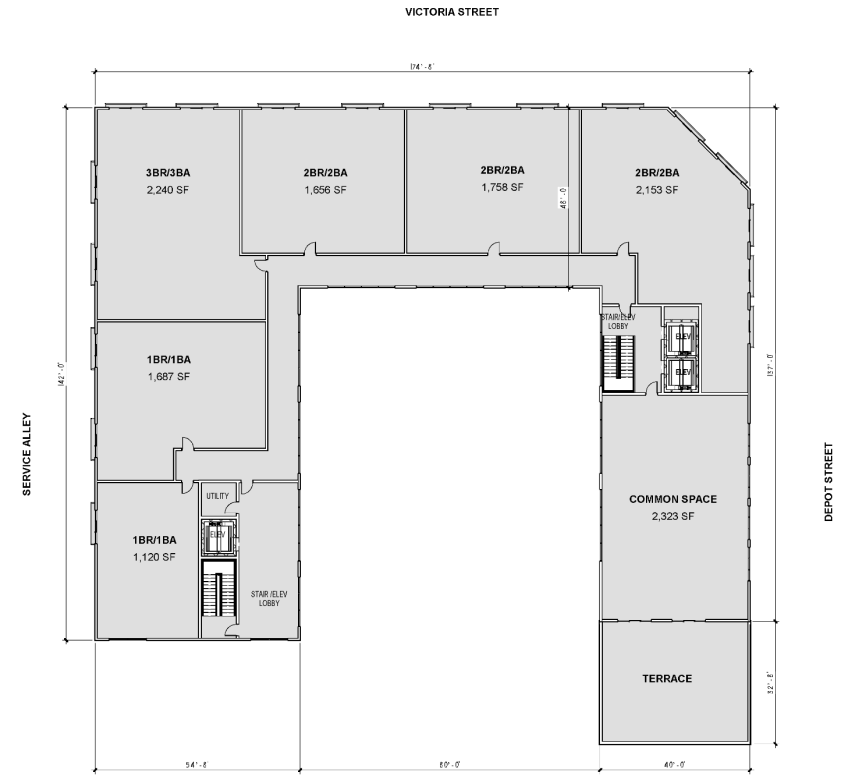
gross 22,704 sf
terrace 1,989 sf

level II – commercial office/retail



gross 18,151 sf
terrace 6,115 sf

level III – residential/commercial



gross 16,844 sf
terrace 1,232 sf

level IV – residential/commercial