

CHINA BASIN

Experience the Waterfront



NEWMARK

MC
Experience the Relationship
McCarthy • Cook

Discover China Basin

- Iconic 1 MSF waterfront Class A campus with the most expansive window line in San Francisco
- Flexible floor plates averaging 95,000SF that are easily divisible
- Surrounded by paths, parks and open space along the water

STATE OF THE ART AMENITIES COMING JUNE 2026!

- Waterfront space to meet, relax, or entertain
- Full-service restaurant, bar, and grab n' go
- Flexible meeting areas, open workspace, and game room
- Fitness center with luxury showers & lockers



New Amenities



Elevate Wellness



Collaborate & Connect



Flexible Meeting Spaces

Amenity Rich Neighborhood

China Basin is surrounded by world class dining, retail, and entertainment venues.



RESTAURANT

Bagel Bakery Cafe
Cafe Okawari
Che Fico
Earl of Sandwich
House of Tadu
Ike's Love & Sandwiches
Marlowe
Merkado
Mission Rock Resort
Momo's
Cafe Réveille
Proper Food
Public House

ROOH SF
Saison
SAJJ Mediterranean
Spark Social SF
STEM Kitchen + Garden
Sun and Moon
Sweetgreen
Taco Bell Cantina
The Ramp
Town's End Brunch
Underdogs Cantina
Happy King Pizza
Miller & Lux

Flour + Water Pizza Shop
Via Aurelia
Casey's Pizza
ROOFTOP 25
KAIYŌ Restaurant
Taksim
Brickhouse Cafe & Bar
Little Skillet
Quê Việt
Via Aurelia
Quick Dog

COFFEE/CAFÉ

Arsicault Bakery
Blue Bottle Coffee
Bravado
Cafe Reveille
Happy Lemon

Joe & The Juice
Latte Express
Philz Coffee
South Beach Cafe
Starbucks

TWYNE
Flour & Branch
Tazza D'Amore Café
Cafe Buenos Aires SF
Golden Goat Coffee

FITNESS

Bakar Fitness & Rec Center UCSF
CorePower Yoga
Flagship SOMA
Lagree Fit 415
Lux Fit
Orangetheory Fitness
PowerPlay SF
United Barbell CrossFit SOMA
Solidcore Mission Bay

BARS/COCKTAILS

ATwater Tavern
Bar VIA
Cavana
District San Francisco
Harmonic Brewing
Local Tap
Trevino Wine Bar
21st Amendment Brewery & Restaurant

DESSERT

Somisomi
Insomnia Cookies

HOTELS

Hotel VIA
LUMA Hotel
Hyatt Place

ENTERTAINMENT

Chase Center
Lucky Strike
Oracle Park
Stagecoach Greens

GROCERY STORES

Safeway
Gus's Community Market Cafe

Transportation Ease at its Finest

- Adjacent to MUNI/Central Subway
- 1 Block to CalTrain
- 7 Minutes to BART
- 2 Blocks to 280/101 and 5 Blocks to 80



Caltrain
2 min walk



MUNI-N
1 min walk



MUNI-T
1 min walk



BART
7 min via MUNI-T
Central Subway



Ferry
14 min via MUNI-N
N Judah



UCSF Shuttle
On-Call Available



HWY 80
5 min drive



HWY 280
4 min drive






SFO
20 min drive



Availabilities

WHARFSIDE BUILDING

Suite	Size (SF)	Available	Floorplan	Virtual Tour	Comments
6800*	24,165 (Divisible)	Now	6800		Premium waterfront spec suite. Three sides of glass, exposed high ceilings, elevator identity. High-end creative finishes. Fully-furnished.
6600	6,524	Now	6600		"Plug and Play" creative suite with water views.
6000*	56,399 (Divisible)	Now	6000		Incredible water views, high ceilings, opportunity for exclusive elevator access. Divisible.
5000*	97,087 (Divisible)	Now	5000		Incredible water views, high ceilings, opportunity for exclusive elevator access. Divisible.
4000*	67,004 (Divisible)	Now	4000		"Plug and Play" space with incredible water views, high-end creative build-out, flexible floor plate. Divisible.
3000*	93,199 (Divisible)	Now	3000		Full floor opportunity. Exclusive 15' x 60" deck with water views. High ceilings and creative finishes. Divisible.
2200*	+/- 7,000 - 18,000	Spring 2026	2200		High-end creative spec suite with water views and high ceilings underway. Suites 2200 and 2400 can be combined for a total of approximately 18,000 RSF.
2400	+/- 11,000	Spring 2026	2400		High-end creative spec suite with water views and high ceilings underway.
1600	28,612 (Divisible)	Now	1600		"Plug and Play" creative suite with water views and direct access to waterfront promenade next to Amenity Center. Sliding glass door provides indoor/outdoor experience.
1200	8,767	Spring 2026	1200		High-end spec suite with waterfront outdoor terrace underway.

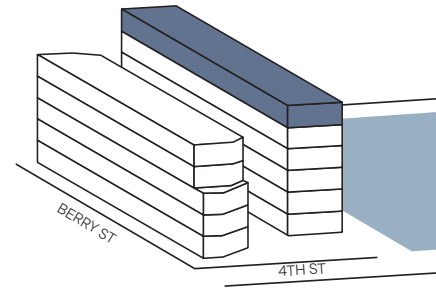
BERRY STREET BUILDING

Suite	Size (SF)	Available	Floorplan	Virtual Tour	Comments
300	50,108	Now	300		Ready for improvements. High ceilings, divisible.
210	5,618	Now	210		Ready for improvements. High ceilings.
200	31,752	4/1/26	200		Up to 87,478 RSF contiguous in the Berry Building.

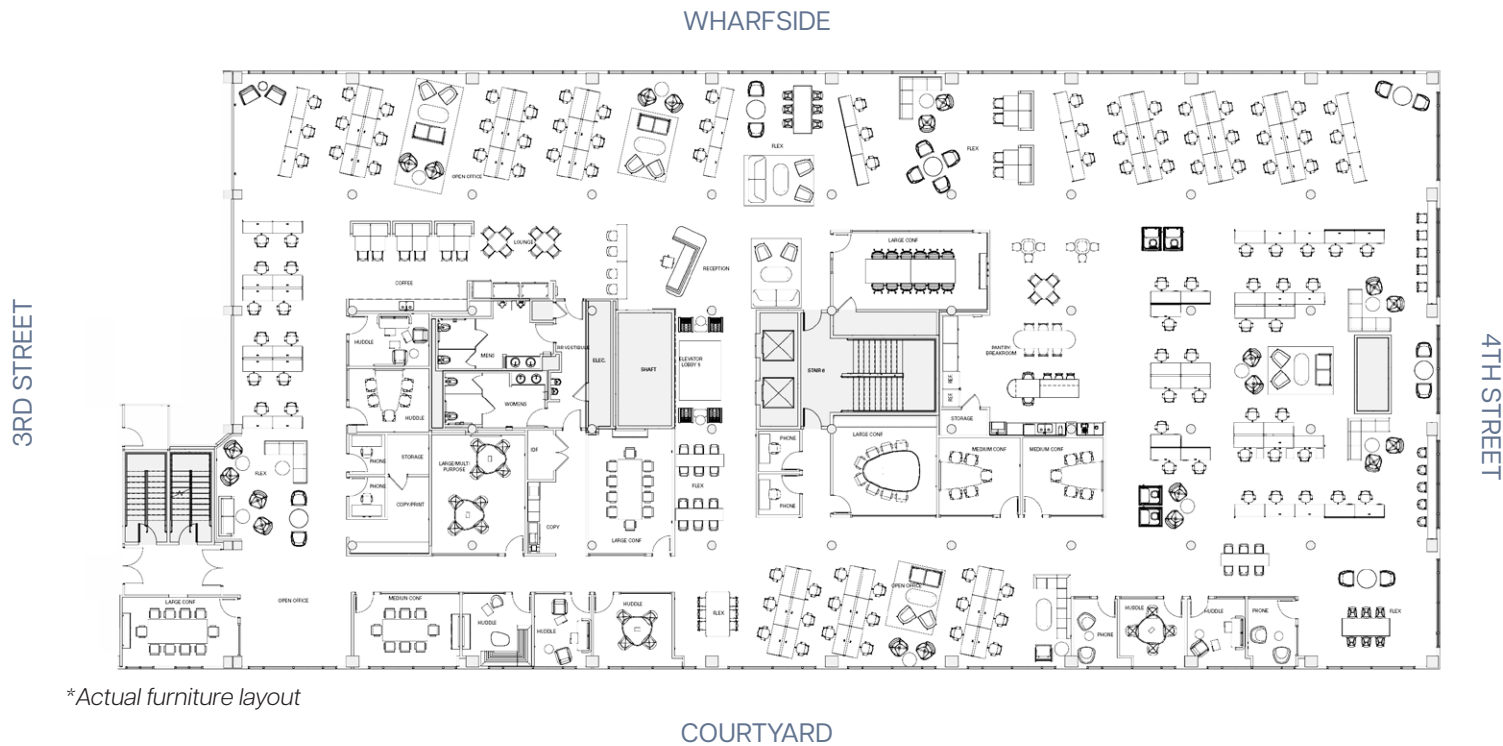
***Large Block Availability: Entire 6th floor, Entire 5th floor, Partial 4th floor, Entire 3rd floor, Partial 2nd floor; Approximately 350,000 contiguous square feet available. Up to 87,000 RSF contiguous in the Berry Building"**

WHARFSIDE

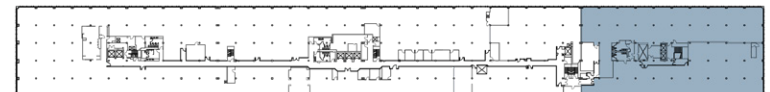
Suite 6800 | 24,165 SF (Divisible)



- High-end spec suite
- Exposed concrete ceilings
- Direct elevator access
- Exclusive restrooms
- Flex and lounge seating for 80+
- Open area for 99 workstations
- 4 large conference rooms
- 3 medium conference rooms
- 6 small conference rooms
- Large pantry/break room
- High-end furniture in place



KEYPLAN

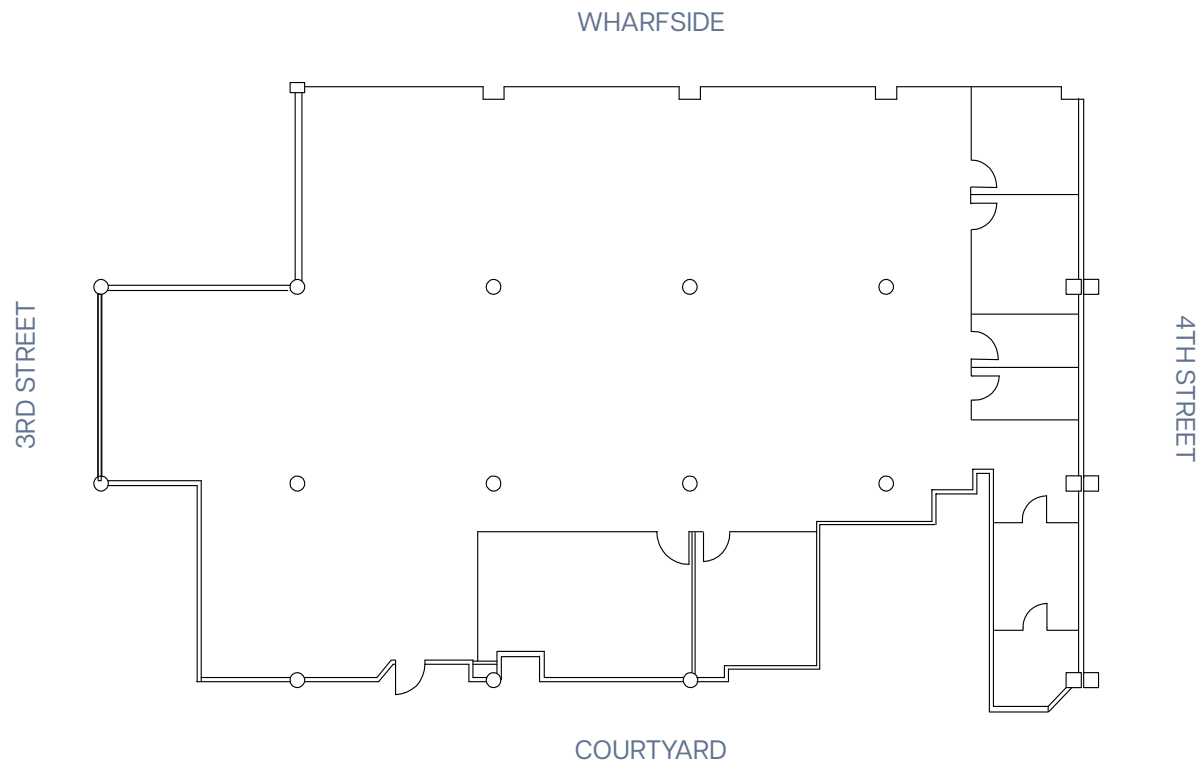
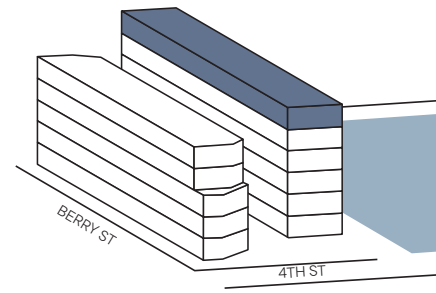


Availabilities

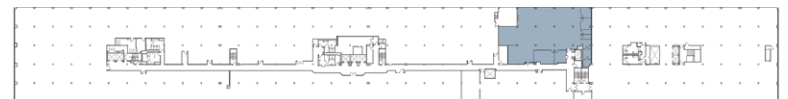
WHARFSIDE

Suite 6600 | 6,524 SF

- Incredible water views
- Creative suite
- Furniture available



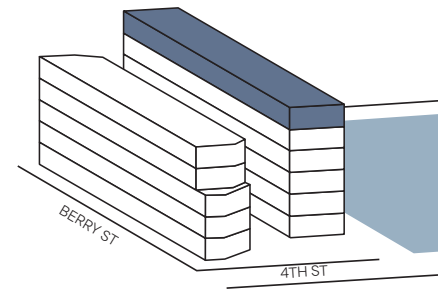
KEYPLAN



Availabilities

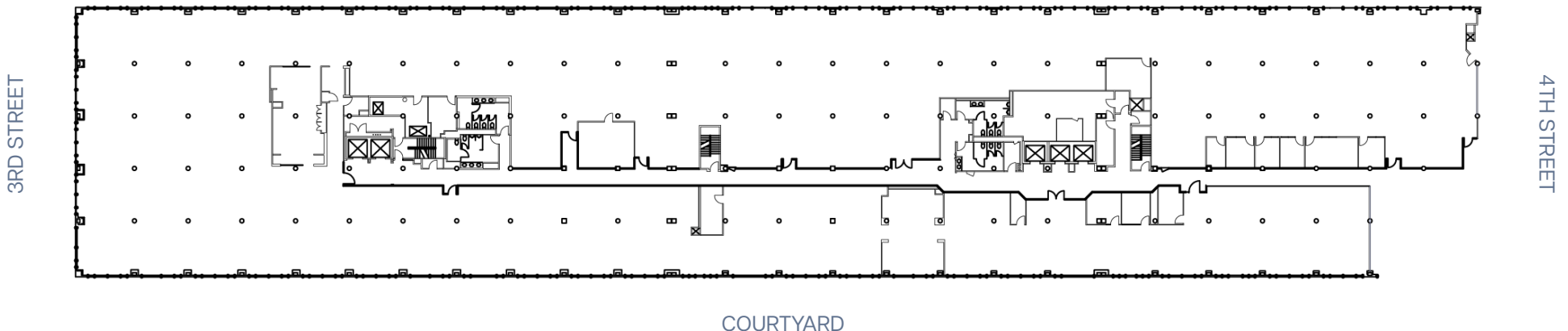
WHARFSIDE

Suite 6000 | 56,399 SF (Divisible)

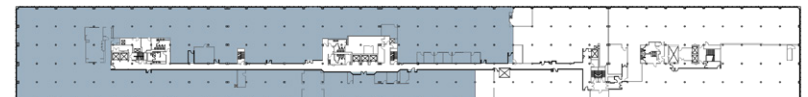


- Incredible water views
- Large efficient floorplate
- High ceilings
- 3 sides of glass
- Served by two elevator lobbies
- Currently in shell condition
- Available now for tenant improvements

WHARFSIDE



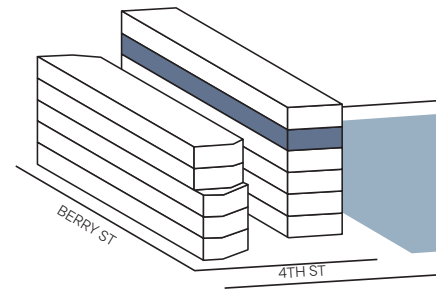
KEYPLAN



Availabilities

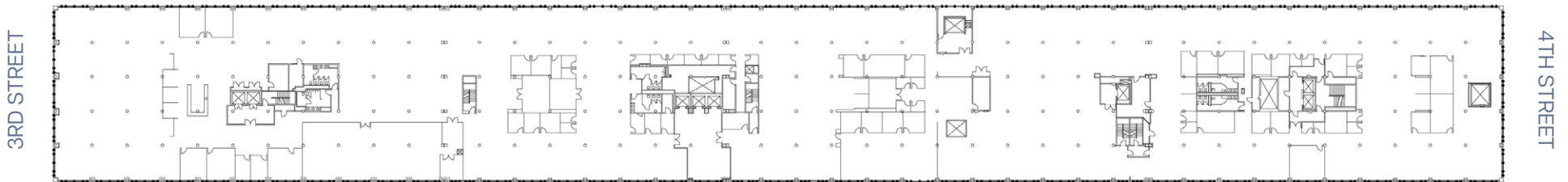
WHARFSIDE

Suite 5000 | 97,087 SF (Divisible)



- Incredible water views
- High-end creative improvements
- Full floor served by three elevator lobbies
- High exposed concrete ceilings
- Large, flexible floor plate

WHARFSIDE



COURTYARD

KEYPLAN

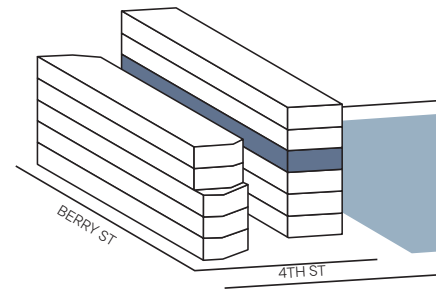


Availabilities

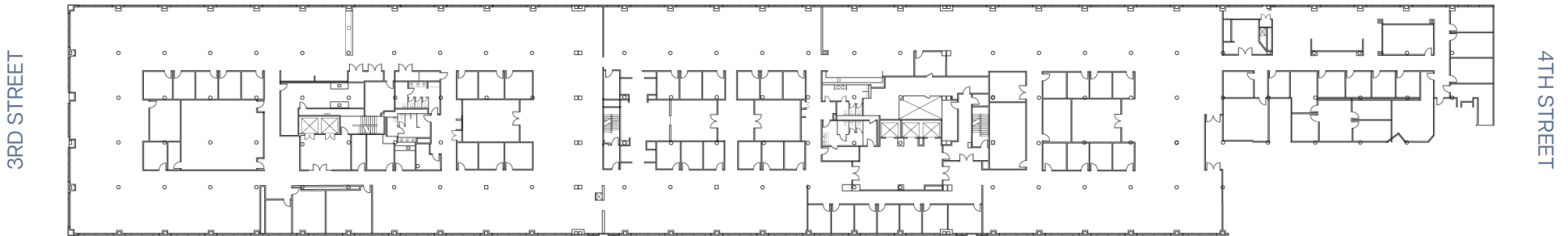
WHARFSIDE

Suite 4000 | 67,004 SF (Divisible)

- “Plug and Play” creative suite with incredible water views
- High-end creative build-out
- Flexible floor plate
- Served by two elevator lobbies
- Fully-furnished
- Recent market ready work completed

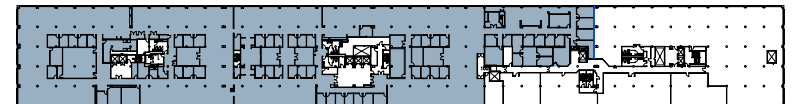


WHARFSIDE



COURTYARD

KEYPLAN

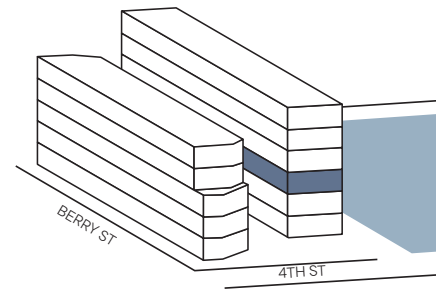


Availabilities

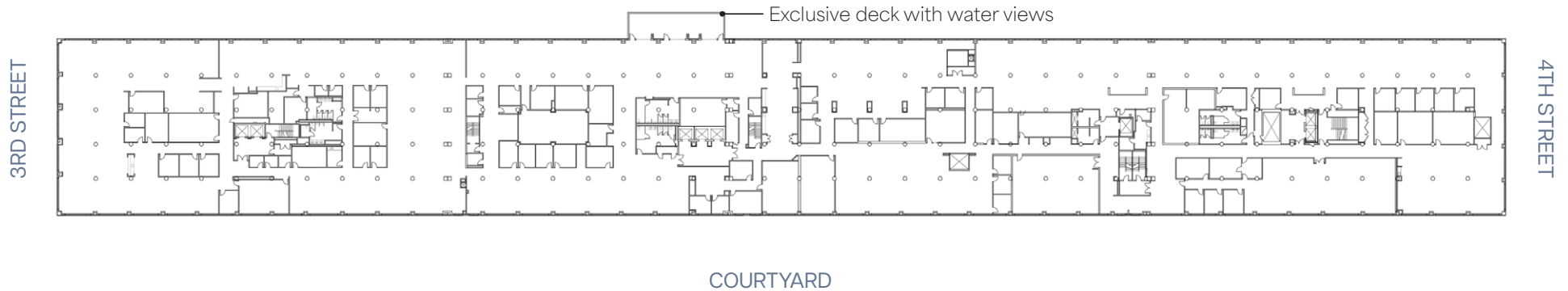
WHARFSIDE

Suite 3000 | 93,199 SF (Divisible)

- Exclusive outdoor deck with incredible water views
- High-end creative improvements
- Full floor served by 3 elevator lobbies
- High ceilings
- Large flexible floor plate



WHARFSIDE



KEYPLAN

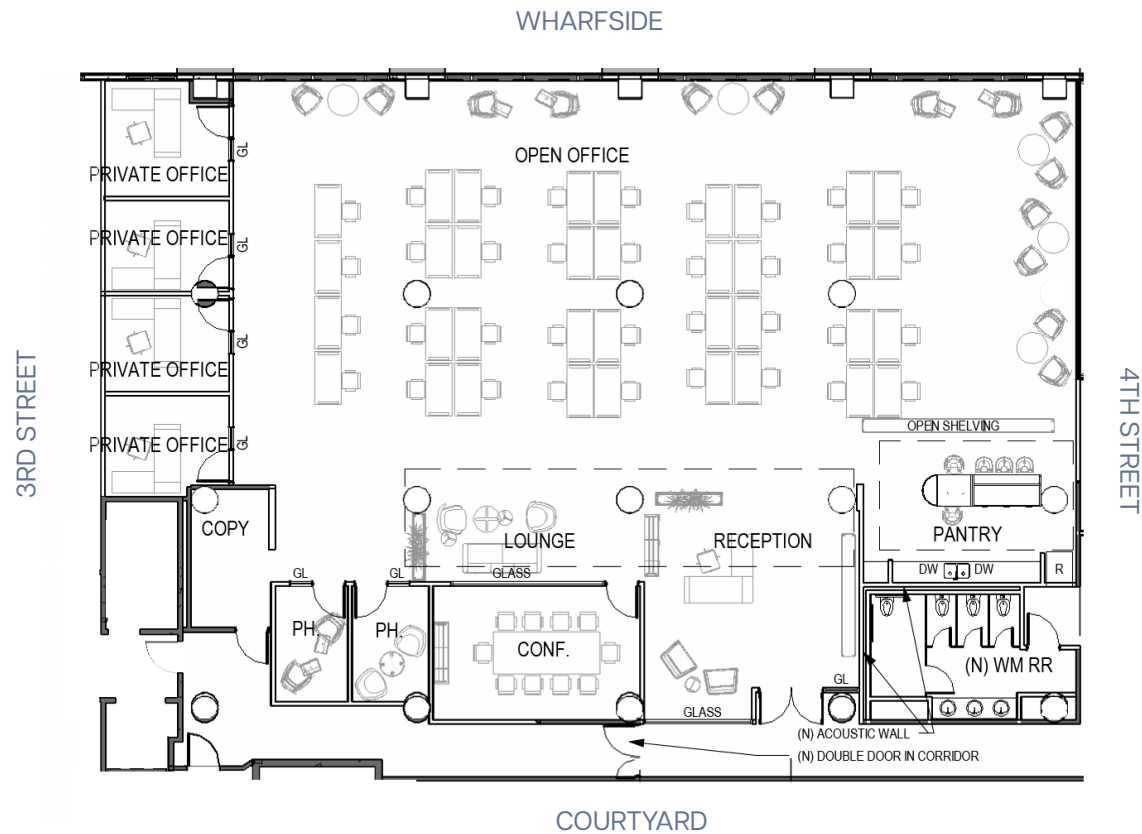
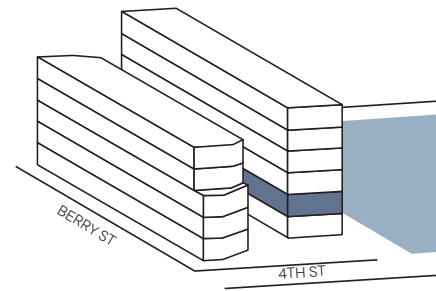


Availabilities

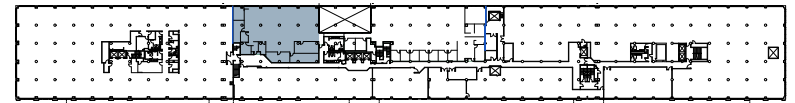
WHARFSIDE

Suite 2200 | +/- 7,000 SF

- Incredible water views
- Double door identity
- High exposed ceilings
- Delivering Spring 2026



KEYPLAN



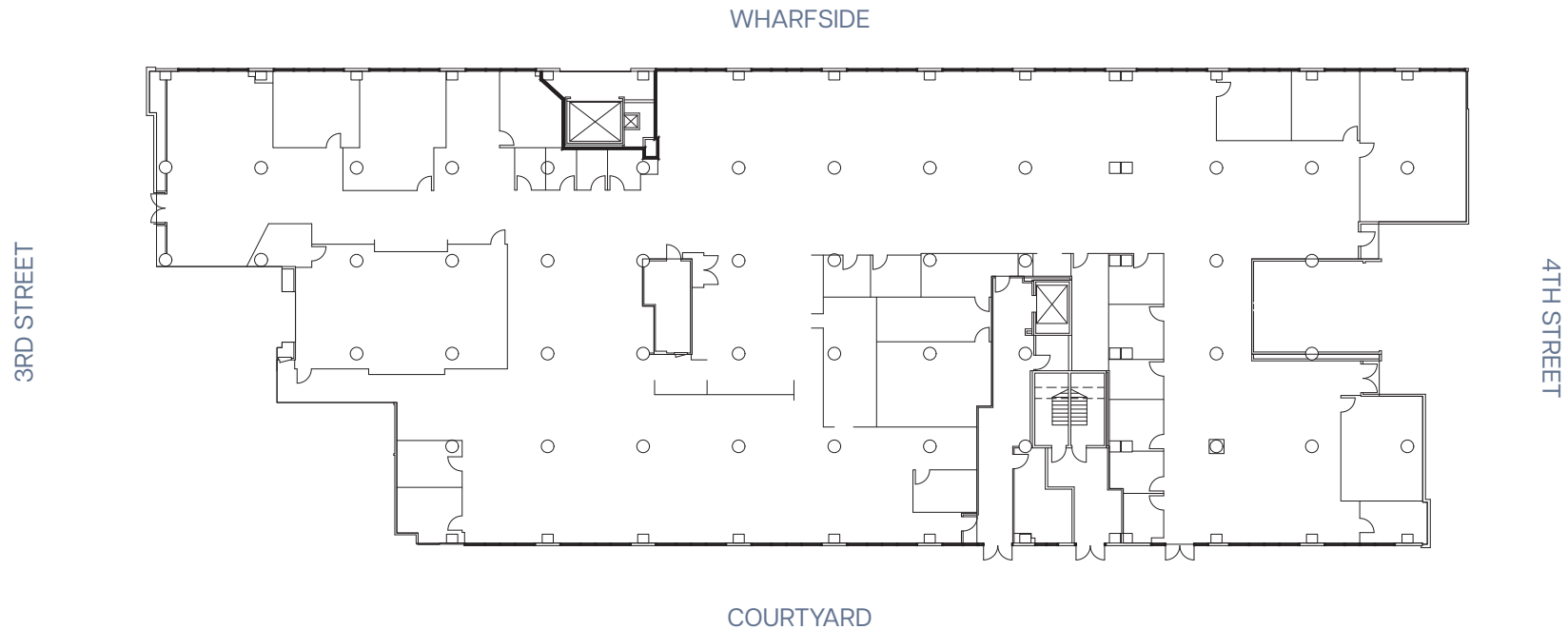
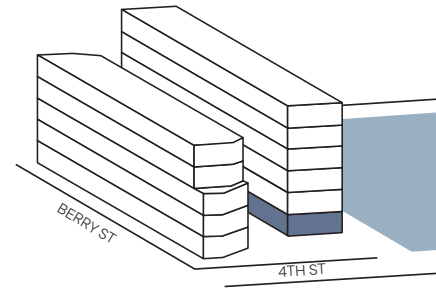
Availabilities



WHARFSIDE

Suite 1600 | 28,176 SF (Divisible)

- Plug and Play
- Creative suite
- Incredible water views
- Potential for outdoor terrace
- Lobby & restroom access on two sides
- Recent market ready work completed



KEYPLAN

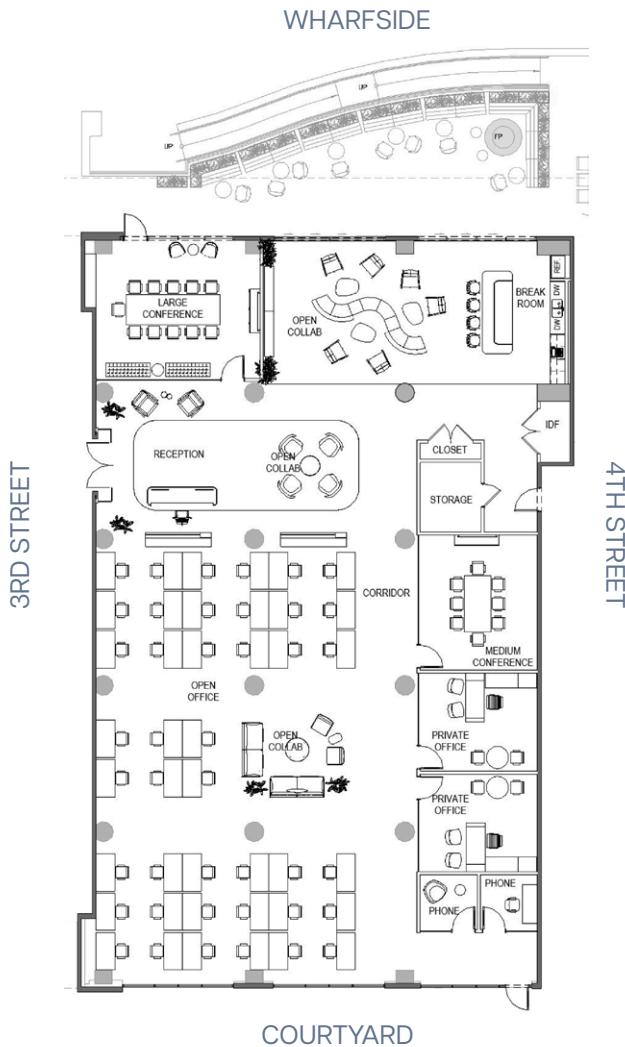
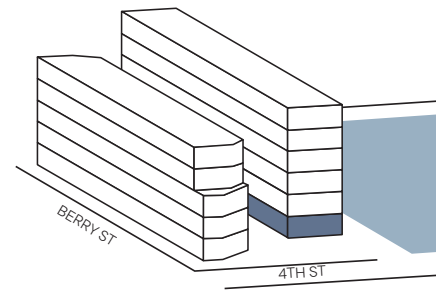


Availabilities

WHARFSIDE

Suite 1200 | 8,767 SF

- Plug and Play
- Incredible water views
- Outdoor terrace
- Lobby & restroom access on two sides
- To be delivered with furniture
- VC-Quality Spec Suite
- Private waterfront terrace
- Direct access to waterfront, lobby, and project amenity space
- High-end finishes throughout



KEYPLAN

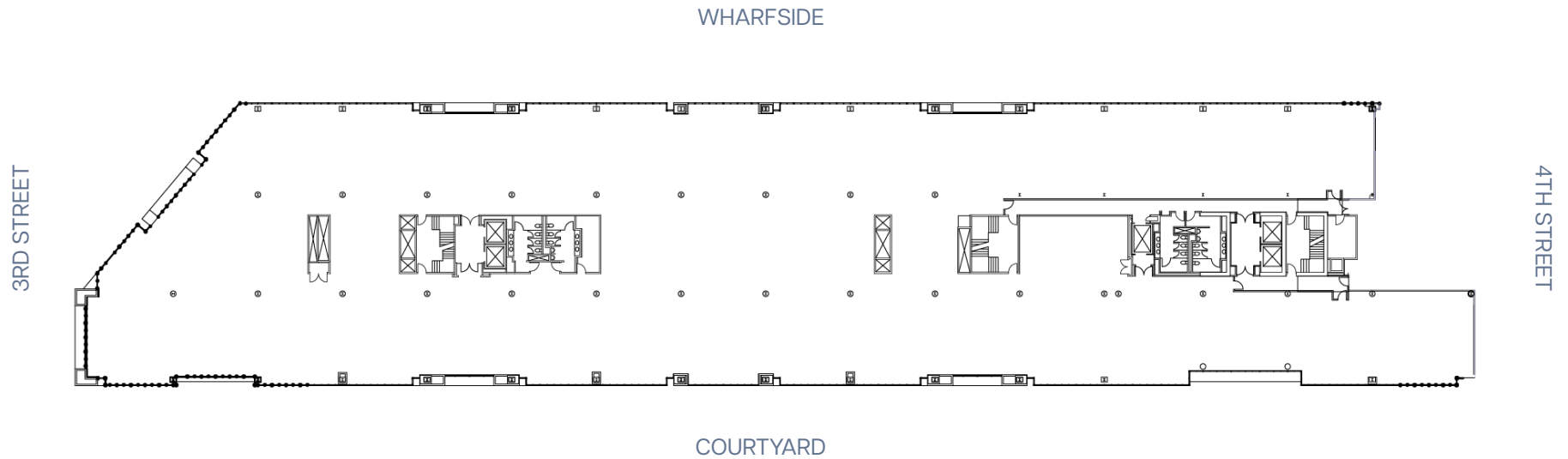
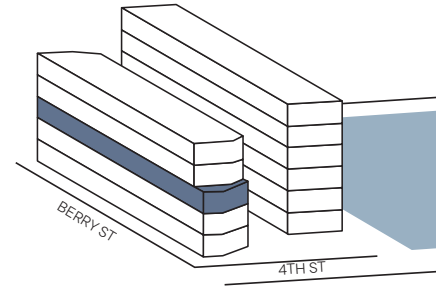


Availabilities

BERRY STREET

Suite 300 | 50,108 SF (Divisible)

- Shell condition
- Divisible
- High ceilings
- Available now



KEYPLAN

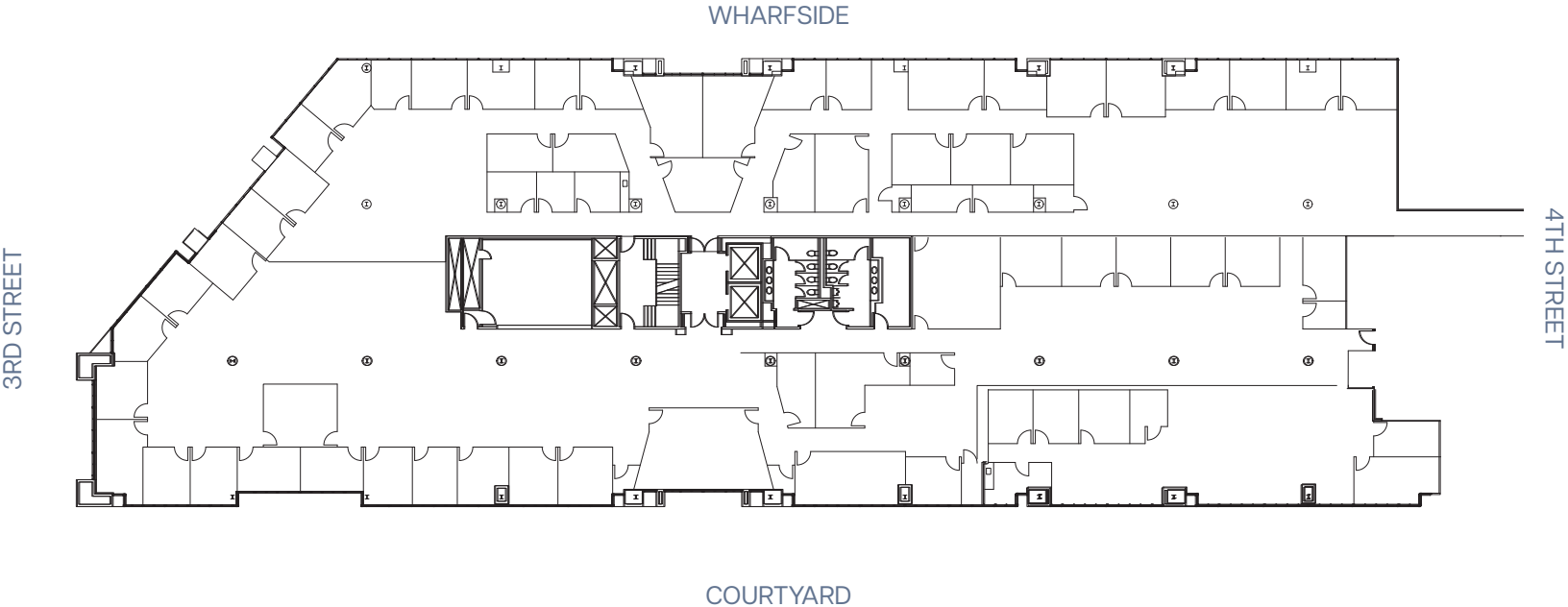
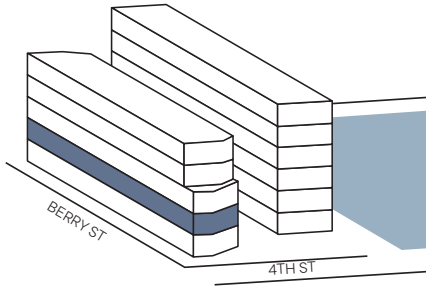


Availabilities

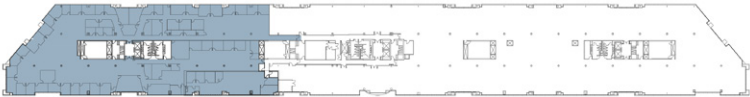
BERRY STREET

Suite 200 | 31,752 SF

- Available 4/1/26



KEYPLAN

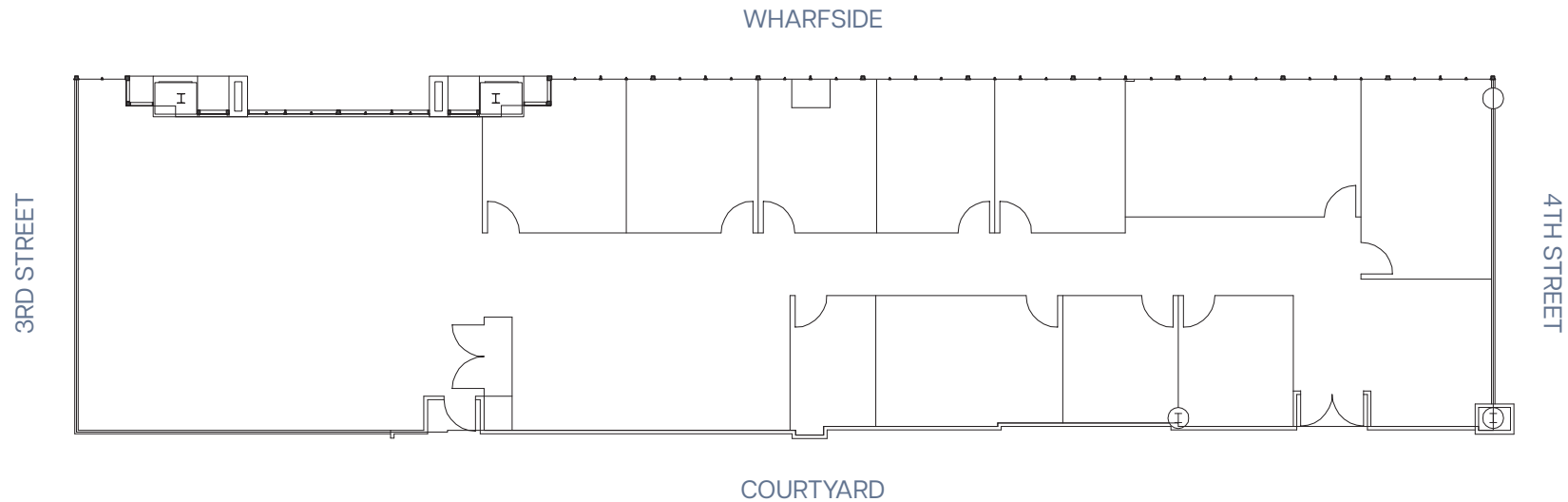
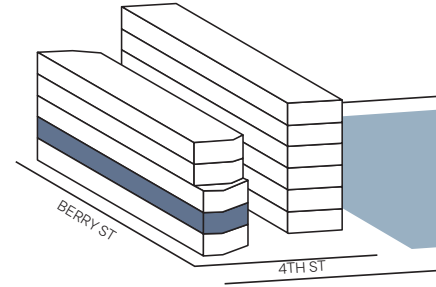


Availabilities

BERRY STREET

Suite 210 | 5,618 SF

- Shell condition
- High ceilings
- Available now



KEYPLAN



Availabilities

CHINA BASIN

Total Convenience



MC⁺

Experience the Relationship
MCCARTHY • COOK

NEWMARK

Karl Baldauf

Executive Managing Director
415.445.5117
karl.baldauf@nmrk.com
CA RE LIC #00960724

Cassidy Zerrer

Senior Managing Director
415.283.9910
cassidy.zerrer@nmrk.com
CA RE LIC #01779321

Maurice Spikes

Senior Managing Director
510.356.8492
maurice.spikes@nmrk.com
CA RE LIC #02001506

Hannah Potter

Managing Director
415.445.5113
hannah.potter@nmrk.com
CA RE LIC #01924485

Richard Hayes

Vice President, Leasing
415.993.5778
rbh@mccarthycook.com
CA RE LIC #01055368

ONE SANSOME ST, FLOOR 41, SAN FRANCISCO, CA 94104

The distributor of this communication is performing acts for which a real estate license is required. The information contained herein has been obtained from sources deemed reliable but has not been verified and no guarantee, warranty or representation, either express or implied, is made with respect to such information. Terms of sale or lease and availability are subject to change or withdrawal without notice.