

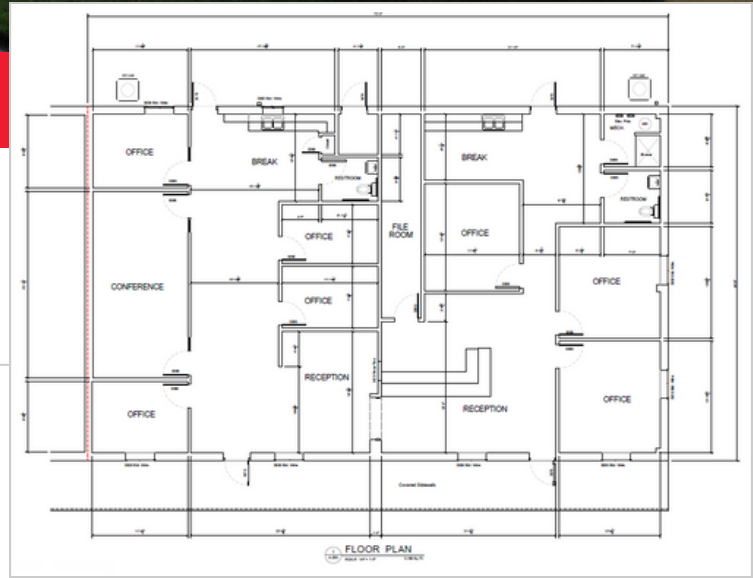
NOW LEASING



📍 WASHINGTON, IA

Washington Center 1621 E Washington St - Suite 5

- 3,168 SF available within 9,000 SF commercial office building on the east side of Washington, IA near Walmart.
- The center offers ample parking and is convenient to restaurants and other shopping.
- Available space can be remodeled to suit exact tenant needs.
- Washington County has a population of 22,805 and, as of September 2025, boasts an unemployment rate of 2%.
- 39% of the labor force in Washington County has an associates degree or higher.



- The top employment industries in Washington County are Health Care / Social Assistance, Retail Trade, Construction, Educational Services, and Manufacturing.
- Washington, IA is just over 30 miles from Iowa City, and is within 300 miles of 7 major markets.



Orscheln Properties Co. L.L.C.
Corey Mehaffy, EVP & General Manager
660-263-1312
info@orschelnproperties.com
orschelnproperties.com



ORSCHELN®
PROPERTIES CO. L.L.C.