

Office Space for Lease

# 2020 HURLEY WAY

Sacramento, CA 95825

2020





**Asking Rate:**

\$1.55 / RSF Full Service Gross



**Suites Available Ranging from**

±950 RSF to ±6,745 RSF



Garden Style Human Scale  
Office Complex with Water  
Features Providing Tenants with  
an Open-Air Environment



Close Proximity to a Variety of  
Amenities Including Dining,  
Shopping, Banks, and More



Common Area Conference Room,  
Fitness Facility, & On-Site Café



4.0/1,000 Parking Ratio











## CAL EXPO

80+ EVENTS PER YEAR  
4M+ ANNUAL VISITORS

EXPOSITION BLVD.

ARDEN WAY

HURLEY WAY

### LOCATION



2020 HURLEY WAY

HOWE AVE.



16 MIN

Sacramento  
International Airport



10 MIN

Sacramento Central  
Business District



## 1. MARKET SQUARE

AT&T Wireless	Mikuni
California Pizza Kitchen	The Cheesecake Factory
Subway	Barnes & Noble
Ulta Beatuy	Dos Coyotes
X-finity	Peet's Coffee
At&T Store	Fedex

## 2. ARDEN MALL

Macy's	Michael Kors
Jcpenney	Armani Exchange
Apple	Sears
Coach	Madewell
Mac	Lululemon
Season 52	Gen Korean Bbq
Starbucks	Jamba Juice
BJ's Brewhouse	Janie & Jack

## 3. HOWEBOUT ARDEN

Century Theatres	Nordstrom Rack
Homegoods	Container Store
Starbucks	T4, Tea for Me
MOD Pizza	Jamba Juice
Bonchon	Kura Revolving Sushi Bar
Ahi Poki	Michaels
18 Grams Coffee	Burlington

## 4. POINT WEST PLAZA

Kohl's	Old Navy
Hobby Lobby	Famous Footwear
Petco	Davids Bridal
Starbucks	Hobby Lobby
Olive Garden	Black Bear



# Availability

## **SUITE 292**

±950 RSF

For more information,  
please contact:

### **SEAN MULLEN**

+1 916 288 4811

CA LIC#01845406

sean.mullen@cushwake.com

### **SPENCER NIELSEN**

+1 916 288 4531

CA LIC#01964163

spencer.nielsen@cushwake.com





# Availability

**SUITE 310** ±1,288 RSF

**SUITE 350A** ±1,066 RSF

**SUITE 350** ±4,391 RSF

**SUITE 405** ±4,178 RSF

\*Suite 350: ±6,745 RSF Contiguous

For more information,  
please contact:

**SEAN MULLEN**

+1 916 288 4811

CA LIC#01845406

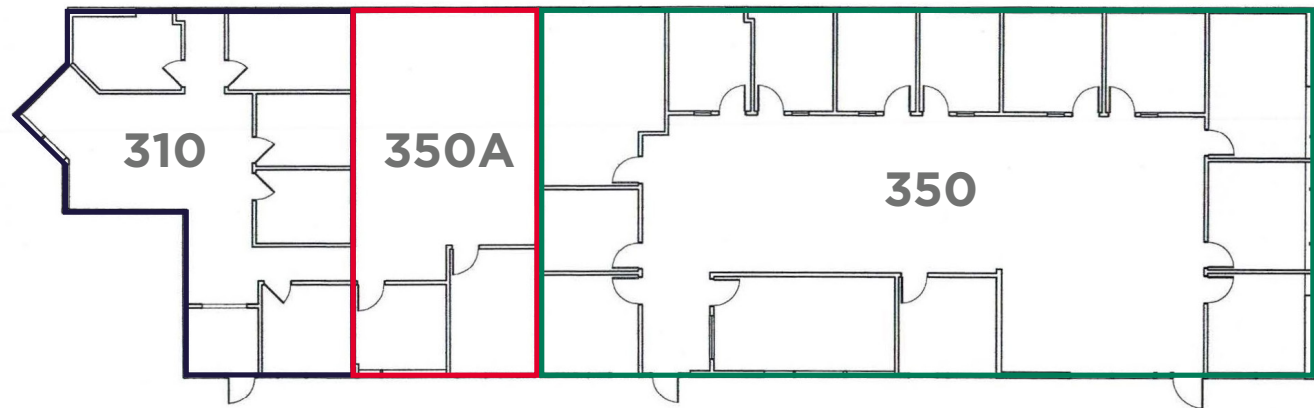
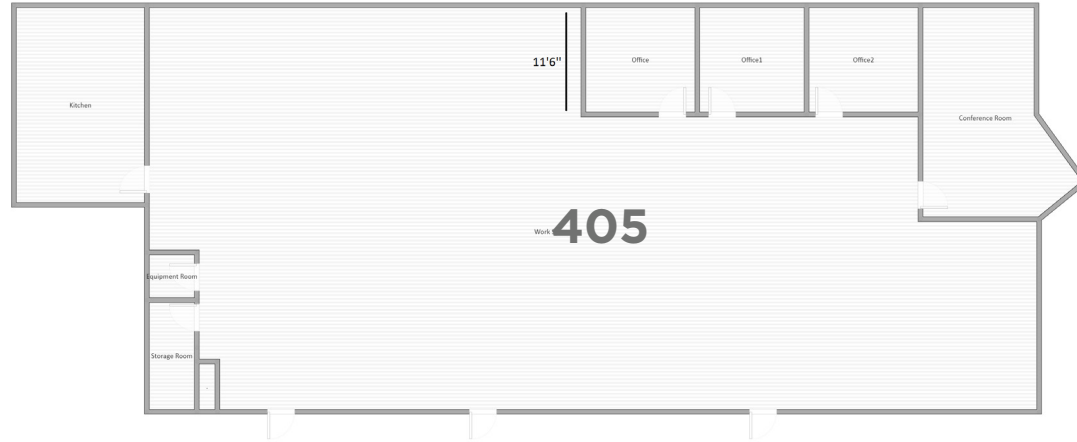
sean.mullen@cushwake.com

**SPENCER NIELSEN**

+1 916 288 4531

CA LIC#01964163

spencer.nielsen@cushwake.com





# Office Space for Lease

For more information,  
please contact:

**SEAN MULLEN**

Managing Director  
+1 916 288 4811  
CA LIC#01845406  
[sean.mullen@cushwake.com](mailto:sean.mullen@cushwake.com)

**SPENCER NIELSEN**

Director  
+1 916 288 4531  
CA LIC#01964163  
[spencer.nielsen@cushwake.com](mailto:spencer.nielsen@cushwake.com)

2020 HURLEY

 CUSHMAN &  
WAKEFIELD

©2025 CUSHMAN & WAKEFIELD. ALL RIGHTS RESERVED. THE INFORMATION CONTAINED IN THIS COMMUNICATION IS STRICTLY CONFIDENTIAL. THIS INFORMATION HAS BEEN OBTAINED FROM SOURCES BELIEVED TO BE RELIABLE BUT HAS NOT BEEN VERIFIED. NO WARRANTY OR REPRESENTATION, EXPRESS OR IMPLIED, IS MADE AS TO THE CONDITION OF THE PROPERTY (OR PROPERTIES) REFERENCED HEREIN OR AS TO THE ACCURACY OR COMPLETENESS OF THE INFORMATION CONTAINED HEREIN, AND SAME IS SUBMITTED SUBJECT TO ERRORS, OMISSIONS, CHANGE OF PRICE, RENTAL OR OTHER CONDITIONS, WITHDRAWAL WITHOUT NOTICE, AND TO ANY SPECIAL LISTING CONDITIONS IMPOSED BY THE PROPERTY OWNER(S). ANY PROJECTIONS, OPINIONS OR ESTIMATES ARE SUBJECT TO UNCERTAINTY AND DO NOT SIGNIFY CURRENT OR FUTURE PROPERTY PERFORMANCE.