

FOR LEASE

2,280± SF OFFICE/WAREHOUSE

3151A Midtown Park | Mobile, AL



PROPERTY DESCRIPTION:

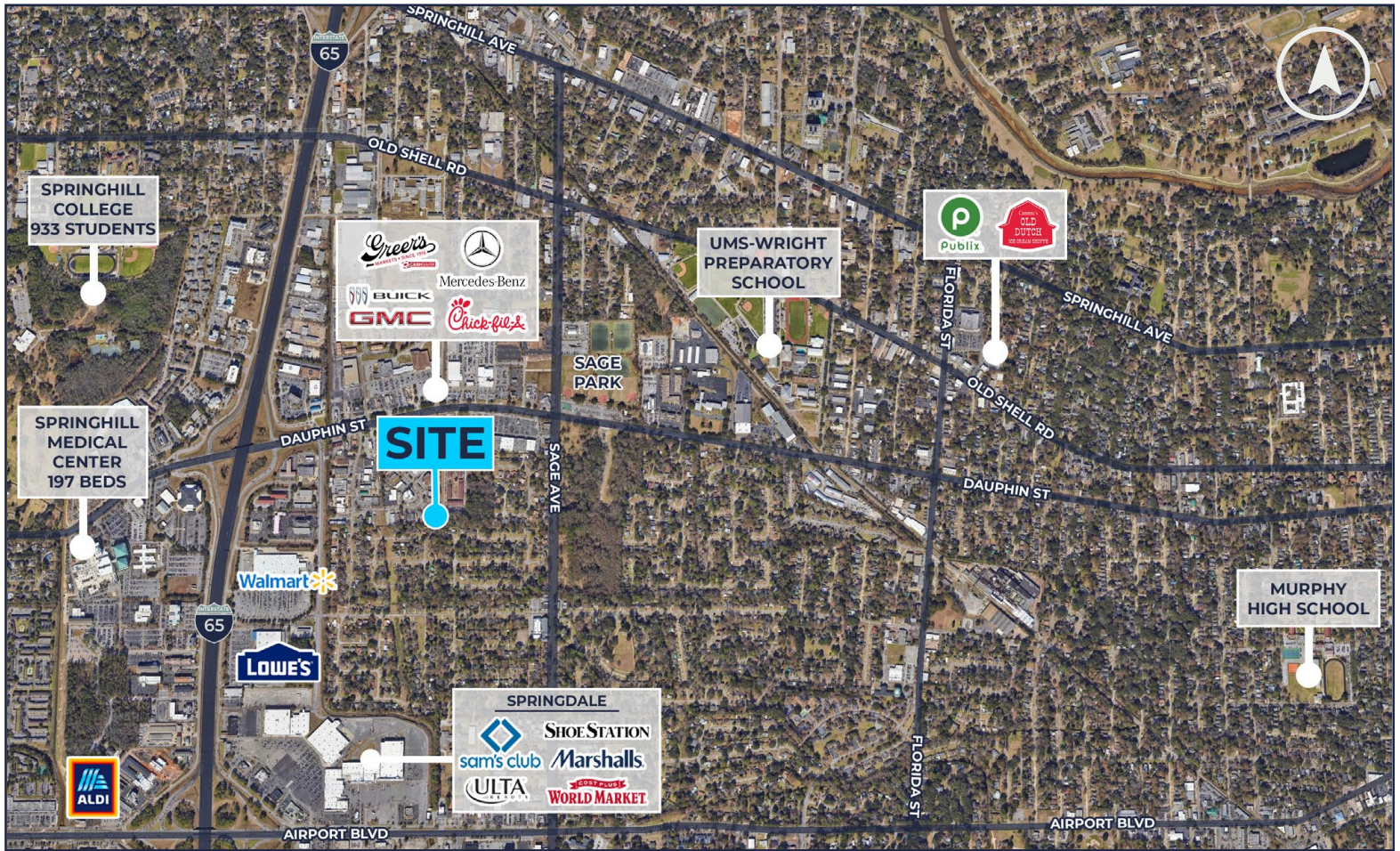
- 2,280± office/warehouse
- Zoned B-3: Community Business
- Layout: reception area, 5 large offices, 2 restrooms and a breakroom
- 2 roll-up doors
- Lighted access onto Midtown Park from Dauphin Street
- 0.7 miles from I-65
- Parking in front and side

LEASE RATE: \$10.53 SF NNN

Jay Roberds, SIOR
251.753.1015 | jay@cre-mobile.com



CRE
MOBILE
CRE-MOBILE.COM



DISTANCES TO NOTABLE LOCATIONS

I-10	5 miles ±
I-65	0.7 miles ±
Port of Mobile	5.6 miles ±
Aeroplex at Brookley	7.5 miles ±
Baldwin County	13.5 miles ±

Distance measured as driving distance

NO WARRANTY OR REPRESENTATION, EXPRESS OR IMPLIED, IS MADE AS TO THE ACCURACY OF THE INFORMATION CONTAINED HEREIN, AND THE SAME IS SUBMITTED SUBJECT TO ERRORS, OMISSIONS, CHANGE OF PRICE, RENTAL OR OTHER CONDITIONS, PRIOR SALE, LEASE OR FINANCING, OR WITHDRAWAL WITHOUT NOTICE, AND OF ANY SPECIAL LISTING CONDITIONS IMPOSED BY OUR PRINCIPALS. NO WARRANTIES OR REPRESENTATIONS ARE MADE AS TO THE CONDITION OF THE PROPERTY NOR ANY HAZARDS CONTAINED THEREIN ARE ANY TO BE IMPLIED.

