

610
WALTHAM WAY
SPARKS, NV 89437

**OFFICE
FOR LEASE**



DOMINIC BRUNETTI, CCIM
PRINCIPAL
775.240.1192 **CELL**
dbrunetti@dicksoncg.com
S.58419

GERRIT HILLEBRAND, CCIM
SENIOR VICE PRESIDENT
775.850.3066 **DIRECT**
ghillebrand@dicksoncg.com
S.186721

PATRICK RIGGS
VICE PRESIDENT, OFFICE
775.220.4957 **CELL**
priggs@dicksoncg.com
S.180878



CORFAC
INTERNATIONAL



610
WALTHAM WAY
SPARKS, NV 89437

LEASE RATE | NEGOTIABLE

SIZE | 25,370 SF

LAND SIZE | 2.4 AC

ZONING | I-2

INDUSTRIAL - OFFICE

APN | 005-021-33

610 Waltham Way is an office building located at the west end of the Tahoe Reno Industrial Center in Storey County. 610 Waltham Way is situated on a 2.4 acre parcel with a 25,370 square foot office building with a generous garage/shop space.

PARCEL MAP

610 WALTHAM WAY
APN: 005-021-33
2.4 AC

WALTHAM WAY



2.5 HOURS
TO SACRAMENTO



45 MINUTES
TO TRUCKEE



20 MINUTES
TO AIRPORT



20 MINUTES
TO RENO



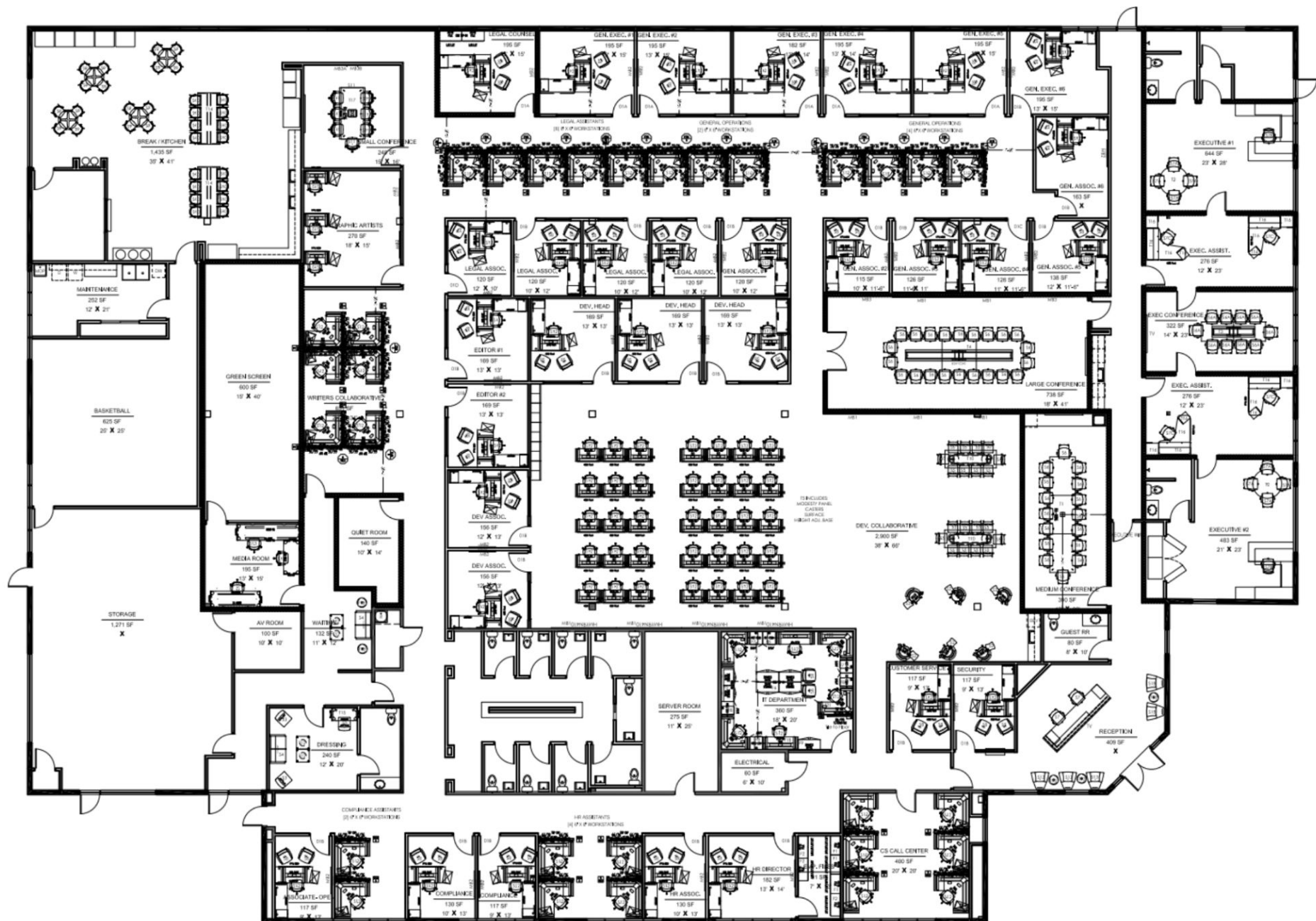
15 MINUTES
TO SPARKS

PROPERTY FEATURES

- Recently renovated with appealing modern design with high end finishes
- High end security system and building design
- Climate controlled IT room
- Cafeteria style break room with patios and BBQ areas
- Located in the new state-of-the-art Tahoe Reno Industrial Center
- Ample parking; ratio of 7 spaces per 1,000 SF of building area
- Built by Devcon Construction in 2005
- Freeway visibility to Interstate 80









LOCATION HIGHLIGHTS



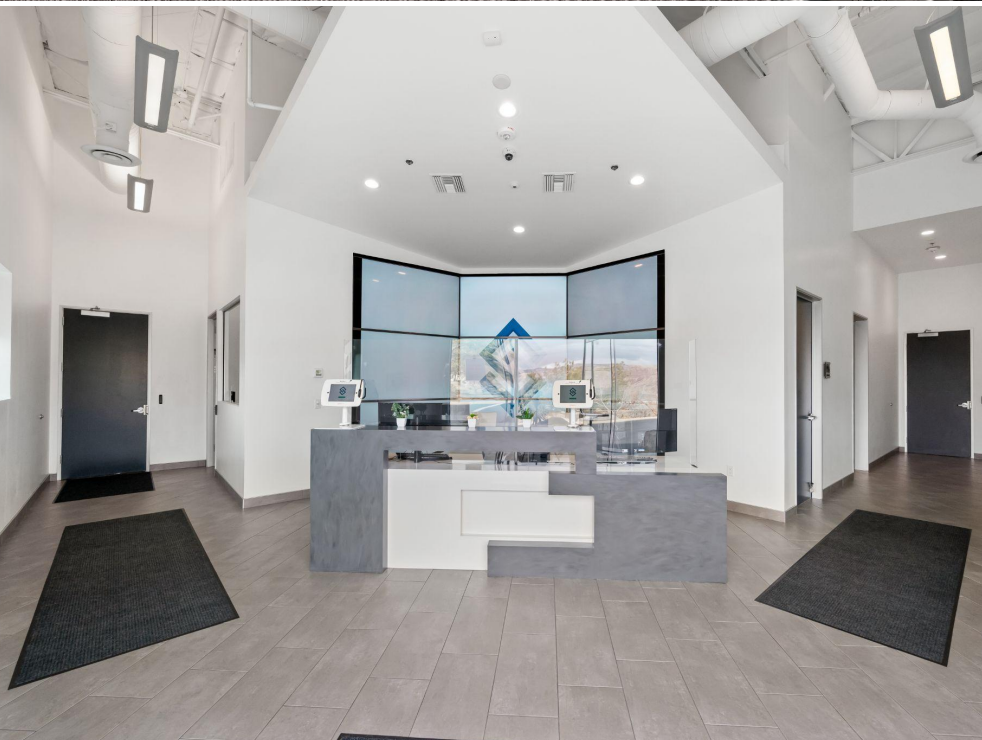
- Located at west end of the Tahoe Reno Industrial Center
- 8 miles to Tesla Gigafactory
- 7.5 miles to Switch Data Center
- 3.4 miles to Apple Data Center
- 6.5 miles to Zulily Warehouse
- 5.7 miles to Walmart Distribution Center

610
WALTHAM WAY

WALTHAM WAY

WALTHAM WAY







TAHOE RENO INDUSTRIAL CENTER



TRI Overview Visit TahoeReno.com

- Tahoe Reno Industrial Center (TRI) is a 107,000 acre park that encompasses a developable 30,000 acre industrial complex with pre-approved industrial and manufacturing uses.
- Located along I-80, 15 minutes East of Reno/Sparks in Storey County.
- Area is designed as large industrial park, supporting both manufacturing and distribution.
- Municipal water and sewer utility companies.
- Water - TRI General Improvement District
- Gas/Electric - NV Energy
- High-pressure gas to all sites.
- Superb access to Interstate 80.
- Resident Companies include - Tesla, Switch, Walmart, Tire Rack, Panasonic, Zulily, PPG, Schluter Systems, U S Ordnance, James Hardie.
- Extremely short process in permitting, planning, and licensing.
- Located within the Opportunity Zone





WHY RENO?

LIVABILITY FACTORS



TOP 5 SUNNIEST CITIES

300 Days of sun annually



18 SKI RESORTS

Within 1 hour



87 PARKS

With over 3,800 Acres of public recreational land within the city



50 CHAMPIONSHIP GOLF COURSES

Within 1.5 hours



ANNUAL EVENTS



Burning Man

Hot August nights

NV Museum of Art

Reno Rodeo

Rib Cook Off

Balloon Races

Riverfest

Artown

"Voted #1 Best Small City in the United States"

According to bestcities.org

"25 of America's best towns ever"

According to Outside Magazine

"Voted #4 Best Large City in the United States"

*Ranked for Best Performing Large
City by Milken Institute*

"Ranked #6 for State Economic Growth"

According to US News

**"Voted #9 for Best Places to Live for Quality
of Life in the U.S. in 2022-2023"**

According to usnews.com

**"Reno the #2 market for companies relocating
from California after Austin, Texas."**

According to Bureau of Labor Statistics

"Voted the Happiest City in America for 2023"

According to Outside Magazine

THE NEW NEVADA

Grow Your Business Here.

NORTHERN NEVADA



CITY OF RENO

- **Over 100 new start up companies** have set up shop in Northern Nevada in the past 2 years.
- Ranked in **TOP 10** places to live.
- Ranks **6TH** in Gen Z City Index for best places to live.
- Average commute time is **20 MINUTES**.

BUSINESS FRIENDLY



- Ranked in **TOP 10** states for best business tax climate.
- Ranked in **TOP 10** states for business incentives.

TECHNOLOGY INFRASTRUCTURE



- Major data centers: **Switch, Apple, Rackspace**.
- Research Collaboration.
- Home to **New Deantronics, Panasonic, Sierra Nevada Corporation**
- **"Super-Loop"** Fiber Network in Progress.

REAL ESTATE, LAND, RESOURCES



- Affordable large-scale real estate and water available.
- Large Industrial Space.
- (**Tesla Gigafactory** in the Tahoe Reno Industrial Center).

ENTREPRENEURIAL ECOSYSTEM



- Ranked as one of the **14 best** startup cities in America.
- Support for entrepreneurs from education, mentorship and funding.
- Home to **Switch, Filament, Flirtey, Bombora, Iris Automation, Clickbio, My-Vr and Many More**

SHIPPING HUB



- Less Than **1-Day** Truck Service To > **60 M Customers, 8 States, 5 Major Ports**.
- **2-Day** Truck Service to **11 States**.

TAX ADVANTAGES



- **No** Corporate Tax
- **No** Personal Income Tax
- **No** Inventory Tax
- **No** Franchise Tax
- **No** Special Intangible Tax

TIER 1 UNIVERSITY



- University of Nevada Reno, more than **20,000 students**
- **R1** - University for Research by Carnegie Classifications

WORKFORCE DEVELOPMENT



- Meeting the changing needs of industry through higher education, new college technical programs, industry certifications, steam programs, and attracting talent to the region.



ICONIC COMPANIES IN **NORTHERN NEVADA**



TESLA

Tesla plans to invest \$3.6 billion to expand Gigafactory, introducing two new factories; a battery manufacturing facility and a truck factory that can support approximately 3,000 new team members.

Gigafactory Nevada currently spans 5.4 million square feet and represents a \$6.2 billion investment for Tesla to date. Annually Tesla produces 7.3 billion battery cells, 1.5 million battery packs, 3.6 million electric vehicles and 1 million energy modules, employing over 11,000 staff members.



Switch is the largest, most advanced data center campus in the world encompassing up to 1.3 million square feet on 2,000 acres in the Tahoe Reno Industrial Center. The facility is powered 100-percent by renewable energy.



Google/Alphabet owns 1,210 acres in The Tahoe Reno Industrial Center a few miles south of Tesla's Gigafactory. The land will reportedly house a future data center and could also host a testing track for Waymo, the Alphabet-owned autonomous driving company.



ITS Logistics is a premier Third-Party Logistics company that provides creative supply chain solutions. ITS logistics headquarters is located in Sparks, Nevada. ITS logistics also has a 40,000 square foot office located in the heart of Downtown Reno.



New Deantronics built a 200,00 square foot medical device technology campus in the Spanish Springs Industrial Park in 2021. The industrial park is home to well known companies like U-Haul, San Mar and Foot Locker.

Panasonic

Panasonic added 94,483 square foot campus located in Reno's airport submarket. The location is the PENA's division headquarters and features state of the art engineering labs, employee recruitment and training facilities and other functions.



Dragonfly Energy has a 99,000 square foot facility in Reno Nevada and has created over 150 jobs. Dragonfly Energy is an industry-leading manufacturer of deep cycle lithium-ion batteries and is spearheading conventional and solid-state lithium-ion battery research and development worldwide.



Apple's \$1 Billion data campus at the Reno Technology Park continues to expand years after its announcement in 2017 with over 100 employees and claims to get 100% of its power from renewable energy sources.



Redwood Materials is creating a closed-loop, domestic supply chain for lithium-ion batteries across collection, refurbishment, recycling, refining, and remanufacturing of sustainable battery materials. Headquartered in Carson City, with a 173 acre battery recycling operation at the Tahoe-Reno Industrial Center and leasing 670,000 square feet of Class A industrial space inside the Comstock Commerce Center. Redwood expects to invest \$3.5 billion in Northern Nevada over the coming decade and hire more than 1,500 people at their Tahoe-Reno Industrial Center site.

RENO

BUSINESS FACTS

WHY NORTHERN NEVADA

BUSINESS ASSISTANCE PROGRAMS

- Sales and Use Tax Abatement
- Modified Business Tax Abatement
- Personal Property Tax Abatement
- Real Property Tax Abatement for Recycling
- TRAIN Employees Now (TEN)
- Silver State Works Employee Hiring Incentive

NEVADA TAX CLIMATE

- No Corporate Income Tax
- No Admissions Tax
- No Personal Income Tax
- No Unitary Tax
- No Franchise Tax on Income
- No Estate Tax

LABOR

- Nevada has one of the lowest labor costs in the region
- Nearly 31,790 students are enrolled in the University of Nevada, Reno and Truckee Meadows Community College
- Roughly 65% of Reno, Nevada's workforce works in the trade and service industry
- Reno, Nevada's population growth is projected to steadily increase 2.09% per year.
- Exceptional manufacturing growth in the past 6 years has led Reno to be among the top cities with manufacturing job increase.

TAX COMPARISONS	NV	CA	AZ	UT	ID	OR	WA
State Corporate Income Tax	NO	8.84%	4.9%	4.95%	6.925%	6.6%	NO
Individual Income Tax	NO	< 13.3%	< 4.54%	4.95%	< 6.925%	< 9.9%	NO
Payroll Tax	<1.475%	.38%	NO	NO	NO	.73%	NO
Capital Gains Tax	NO	< 13.3%	< 4.54%	4.95%	< 6.93	< 9.9%	NO



DOMINIC BRUNETTI, CCIM

PRINCIPAL
775.240.1192 **CELL**
dbrunetti@dicksoncg.com
S.58419

GERRIT HILLEBRAND, CCIM

SENIOR VICE PRESIDENT
775.850.3066 **DIRECT**
ghillebrand@dicksoncg.com
S.186721

PATRICK RIGGS

VICE PRESIDENT, OFFICE
775.220.4957 **CELL**
priggs@dicksoncg.com
S.180878

**Sourced from credible sources, the broker cannot guarantee the reliability of the information provided. No explicit or implied warranties or representations are made regarding the accuracy of the information. This content is subject to potential vulnerabilities, such as errors, omissions, price fluctuations, rental terms, and other conditions, including prior sale, lease, financing, or unexpected withdrawal. You and your advisors should thoroughly assess the property to ascertain its suitability for your specific needs. Additionally, we strongly recommend seeking guidance from your legal, financial, or other qualified professional advisors.*

333 Holcomb Ave., Ste. 300 | Reno, Nevada 89502 | **775.850.3100** | **dicksoncg.com**

CORFAC
INTERNATIONAL