

# 28

Northbrook Lane  
SHREWSBURY, PENNSYLVANIA

# FOR LEASE

Office / Flex



# 2,640 SF

AVAILABLE

# KINSLEY

PROPERTIES

## Contact:

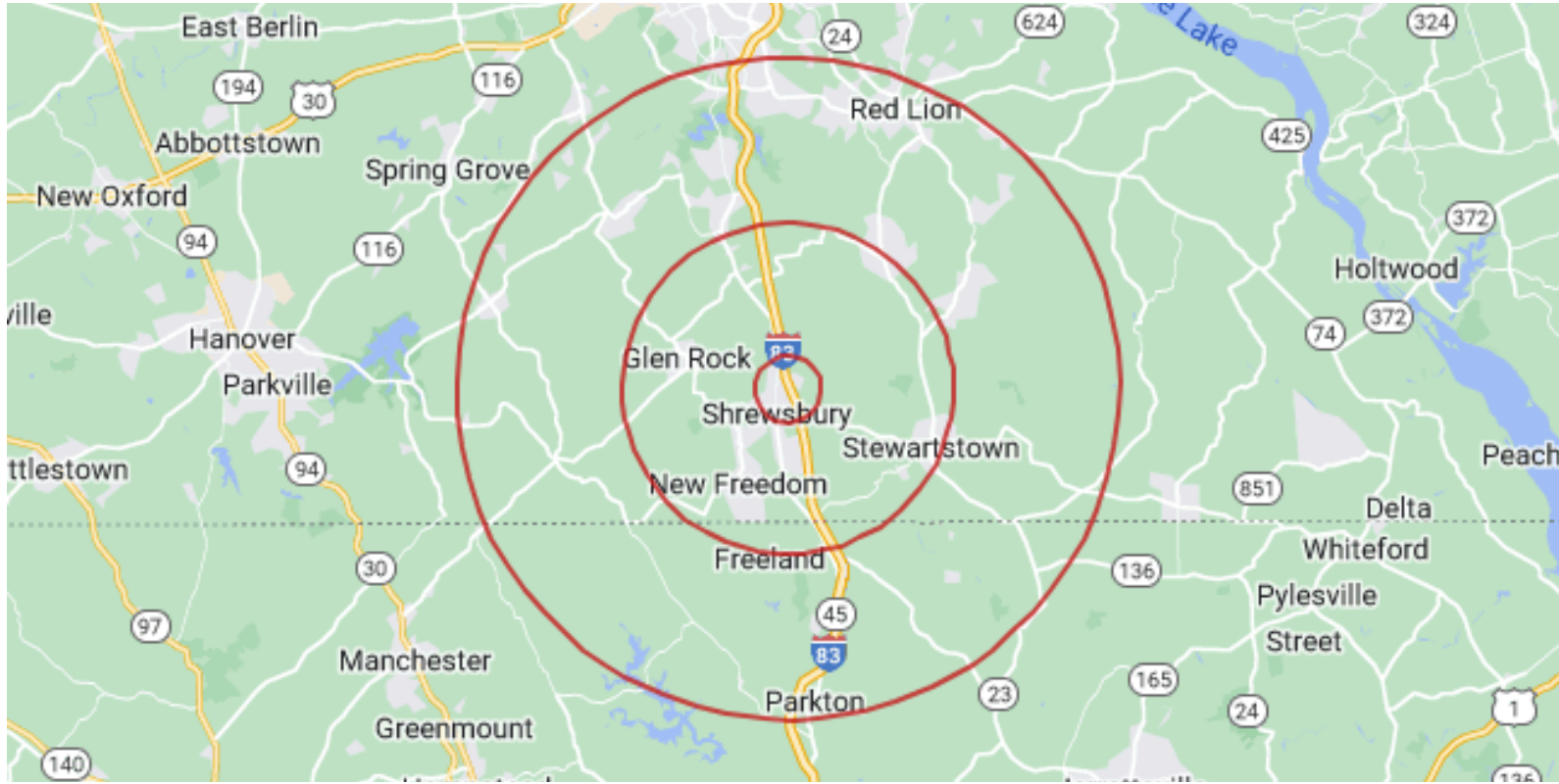
Dan Hawks  
(717)-741-8707  
dhawks@kinsleyproperties.com

Joe Caughy  
(717)-741-8365  
jcaughy@kinsleyproperties.com



**Building Specifications:**

<b>Township</b>	<b>Shrewsbury Borough</b>	<b>Restrooms</b>	<b>In Suite</b>
<b>Zoning</b>	<b>Industrial</b>	<b>Car Parking</b>	<b>Yes</b>
<b>Tenancy</b>	<b>Multiple</b>	<b>Fire Protection</b>	<b>Fire Alarm</b>
<b>Land Area</b>	<b>4.5 Acres</b>	<b>HVAC</b>	<b>Yes</b>
<b>Building Area</b>	<b>10,665 SF</b>	<b>Stories</b>	<b>1</b>
<b>Signage</b>	<b>Yes</b>	<b>Elevators</b>	<b>No</b>



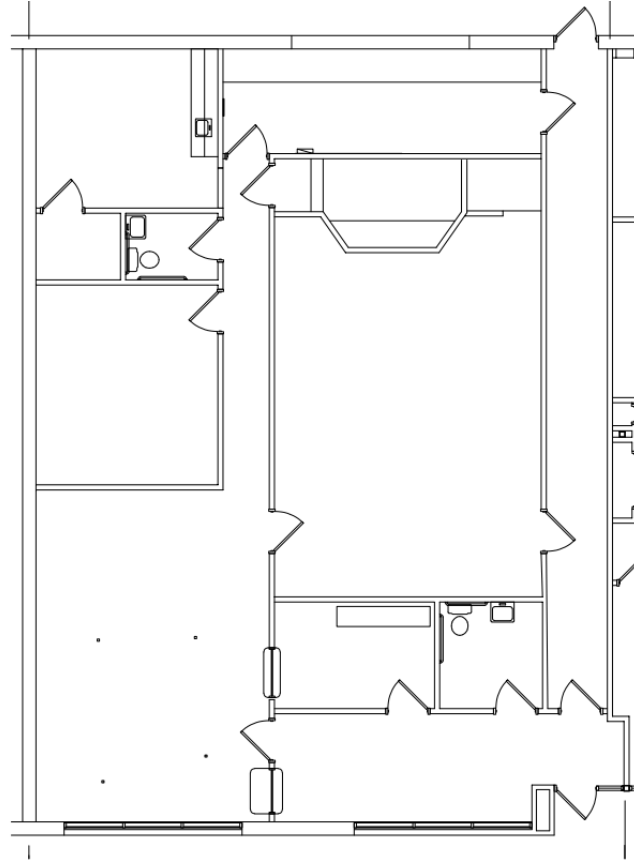
### Distances to Cities:

Baltimore, MD	39 miles	41 min
Harrisburg, PA	42 miles	45 min
Philadelphia, PA	105 miles	2 hrs.
New York, NY	192 miles	3 hrs. 30 min

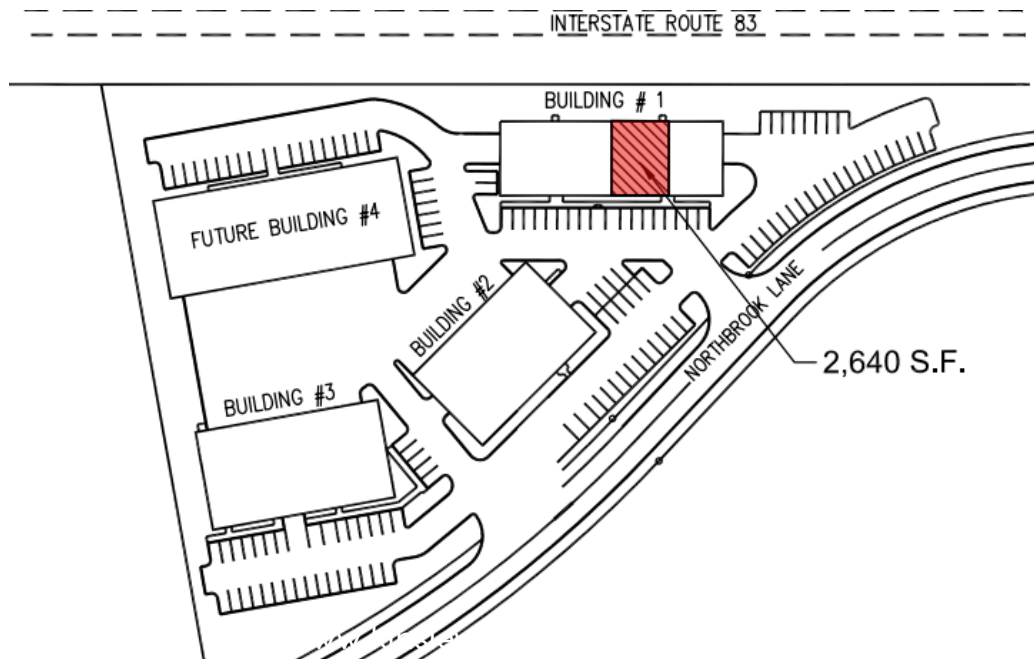
### Labor Statistics:

	1 Mile:	5 Miles:	10 Miles:
Total Population	2,876	28,771	98,369
Labor Population	3,305	9,300	25,279
Median Household Income	94,006	89,603	85,086

**NORTHBROOK BUSINESS CENTER, BUILDING #1  
(28 NORTHBROOK LANE - SUITE 4 - SHREWSBURY, PA 17361)  
2,640 SF FLOOR PLAN  
"B" BUSINESS**



**NORTHBROOK BUSINESS CENTER-BUILDING #1  
(28 NORTHBROOK LANE - SUITE 4 - SHREWSBURY, PA 17361)**



# **KINSLEY**

PROPERTIES

## **About Kinsley Properties**

Kinsley Properties is a privately held real estate development and management company. We develop new projects from the ground up and also acquire existing properties to hold long-term in our real estate investment portfolio. We develop and acquire different types of real estate in partnership with others or to be wholly owned. We have the capability, resources, and staff in order to facilitate and guide our clients through a successful real estate process. We work together with our clients in order to complete the entire real estate process from the beginning to the end. Starting from acquisition to development and design, construction, leasing, and asset management, we take pride in our product and work to provide all of these services in connection with the properties that are held in our portfolio. We have over 50 years of experience developing and managing a diverse portfolio of various property types across the mid-Atlantic region. We have a goal to provide solutions and high-quality customer service in order to ensure the success and growth of our clients, tenants, and partners. We believe in long-term relationships, collaboration, and teamwork because we are all in this together and we want to do what we can to ensure the entire team's success.

### **Mission:**

WE PROVIDE REAL ESTATE SOLUTIONS THAT CREATE LASTING RELATIONSHIPS AND CLIENT SUCCESS.

### **Vision:**

BE THE MOST RESOURCEFUL REAL ESTATE EXPERT.

### **Values:**

OUR REPUTATION IS BUILT ON INTEGRITY.  
WE DEVELOP PEOPLE.  
WE'RE IN IT WITH YOU.  
SHARED SUCCESS.  
ALWAYS BE RESPONSIBLE.



**DAN HAWKS**

Director of Leasing  
dhawks@kinsleyproperties.com  
717-741-8707



**JOE CAUGHY**

Leasing & Marketing Associate  
jcaughy@kinsleyproperties.com  
717-741-8365

### **ADDRESS:**

6259 Reynolds Mill Road  
Seven Valleys, PA 17360