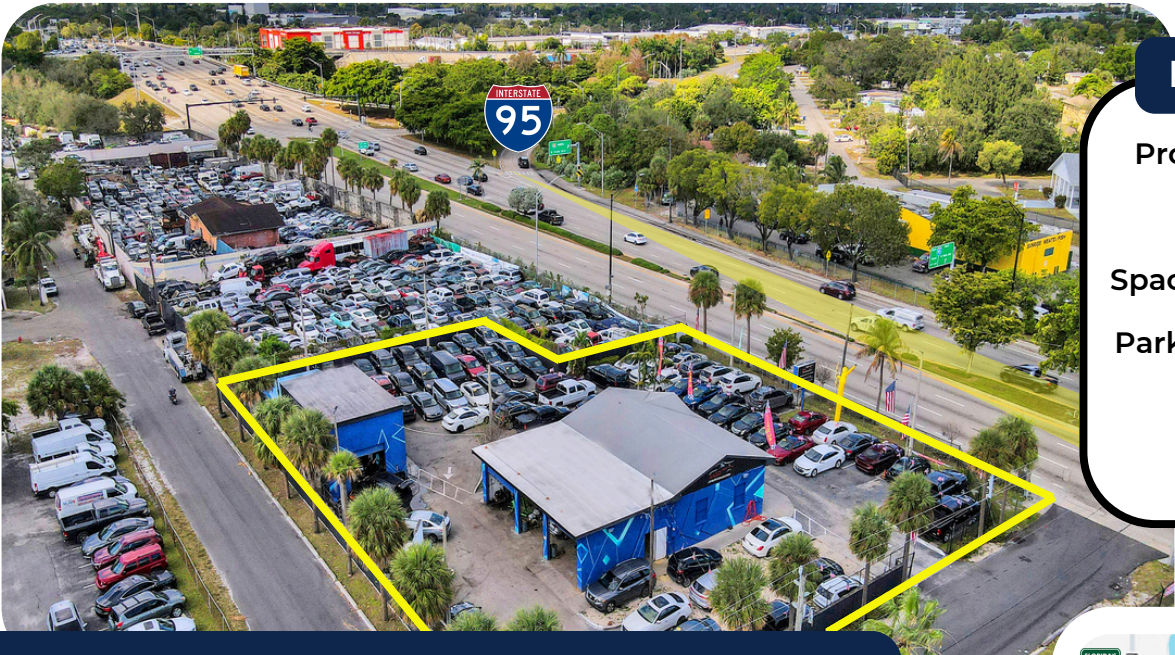


# LOT & BUSINESS FOR SALE

📍 1730 W Sunrise Blvd, Ft. Lauderdale FL, 33311



## EXECUTIVE SUMMARY

Property Type	Dealership
Sale Price	\$3,250,000
Space Available	+/-3,120 SF
Parking Spaces	+/-100 Spaces
Lot Size	+/- 0.62 AC
Zoning	B-3

## SUNRISE BLVD. DEALERSHIP BUSINESS + REAL ESTATE

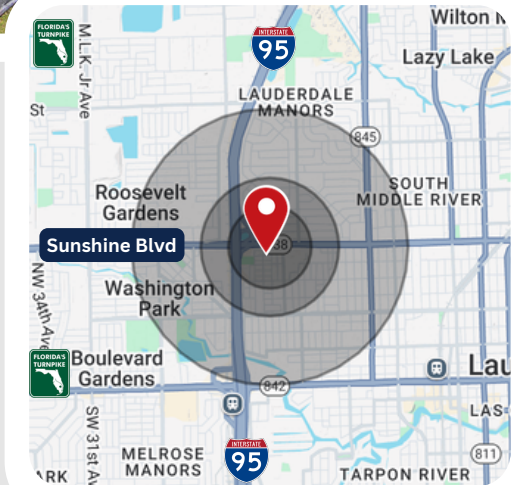
### PROPERTY DESCRIPTION

This prime 0.62-acre lot offers exceptional visibility with an average daily traffic count of 63,500 vehicles on Sunrise Blvd. Strategically situated just one block east of I-95 and west of Powerline Rd, the property provides unparalleled access to major thoroughfares.

The lot accommodates approximately 85 vehicles, making it an ideal space for automotive sales. This unique opportunity combines a high-traffic location, versatile structures, and ample parking, perfect for a thriving dealership.

### HIGHLIGHTS

- 0.62 AC lot with fenced yard
- 157 ft frontage on W Sunrise Blvd w/2 curb cuts
- 3 Grade-level roll-up doors
- 30% Office; 70% Warehouse
- B-3 Zoning ideal for Car/Boat/RV/Auto Repair
- Sale price includes the real estate & the business



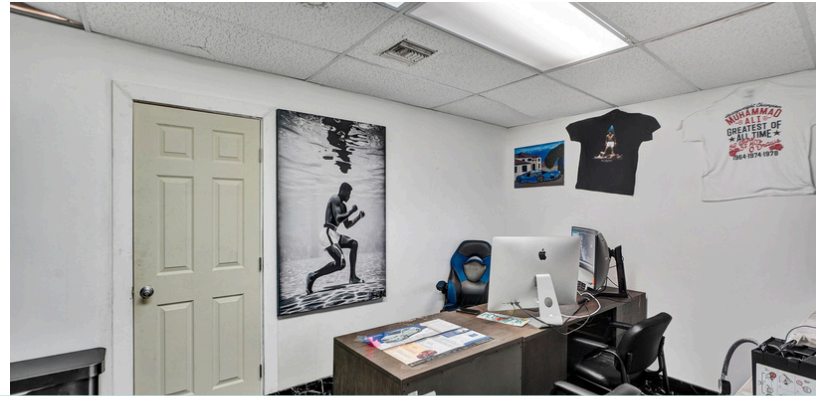
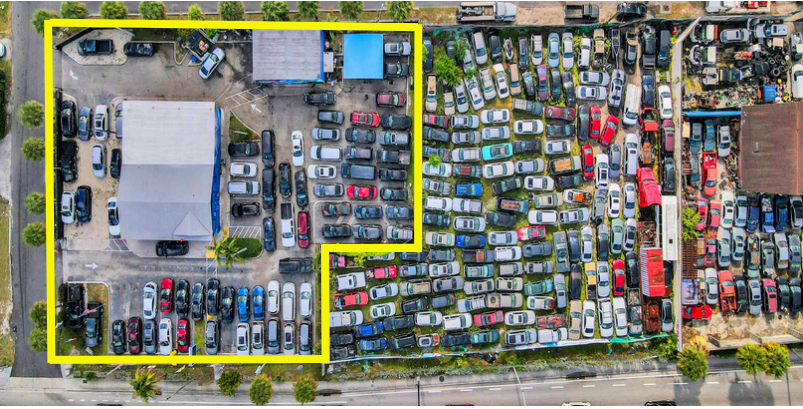
Miles	0.3	0.5	1.0
-------	-----	-----	-----



# DEALERSHIP FOR SALE



1730 W Sunrise Blvd,  
Ft. Lauderdale, FL 33311



3101 N Federal Hwy, Ste 502  
Fort Lauderdale, FL 33306  
P: 954.372.7280  
info@LEVELrealty.com

*\*All information is presented without warranty as to accuracy or completeness of the any materials or information provided, derived, or received.*

**\*\*EACH PARTY SHALL CONDUCT ITS OWN INDEPENDENT INVESTIGATION AND DUE DILIGENCE.**

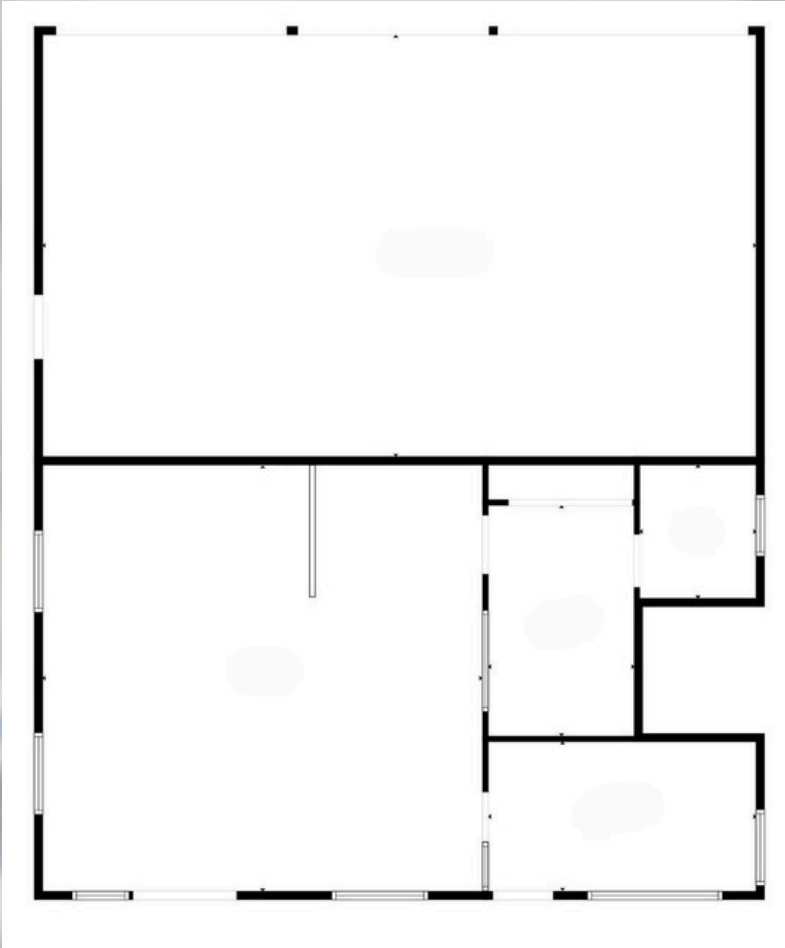
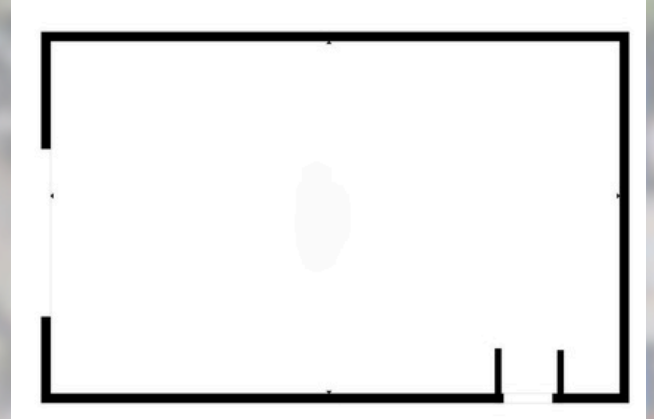


# DEALERSHIP FOR SALE



1730 W Sunrise Blvd,  
Ft. Lauderdale, FL 33311

## Floor Plans



3101 N Federal Hwy, Ste 502  
Fort Lauderdale, FL 33306  
P: 954.372.7280  
info@LEVELrealty.com

*\*All information is presented without warranty as to accuracy or completeness of the any materials or information provided, derived, or received.*

*\*\*EACH PARTY SHALL CONDUCT ITS OWN INDEPENDENT INVESTIGATION AND DUE DILIGENCE.*

