

WINDSOR MILL MEDICAL PLAZA

2925 Lord Baltimore Dr
Windsor Mill, MD

FOR SALE
Owner-User or Investment
Opportunity
FOR LEASE
9,643 SF available
November 1, 2025



29,600 SF Medical Building For Sale Details



SALE PRICE

Call for pricing



CURRENT ANNUAL NOI

\$483,000



WALT

2.73 Years



OCCUPANCY

100% occupied with upcoming
roll in 2025



ZONING

Zoning ML-IM



PARKING

4.8:1000



29,600 SF Medical Building
For Lease Details

9,643 SF SUITE
AVAILABLE



RENTAL RATE
Undisclosed



AVAILABILITY
One suite at 9,643 SF available
November 1, 2025



ZONING
Zoning ML-IM



PARKING
4.8:1000





**29,600 SF
Medical Building**

Windsor Mill Medical Plaza, located at the corner of Lord Baltimore Drive and Windsor Mill Road, is located in Woodlawn, MD just off I-695. The building is located among several professional and medical buildings such as Precision Health Care and Northwest Hospital. Other notable corporate neighbors include the Social Security Administrative and Center for Medicare and Medicaid.

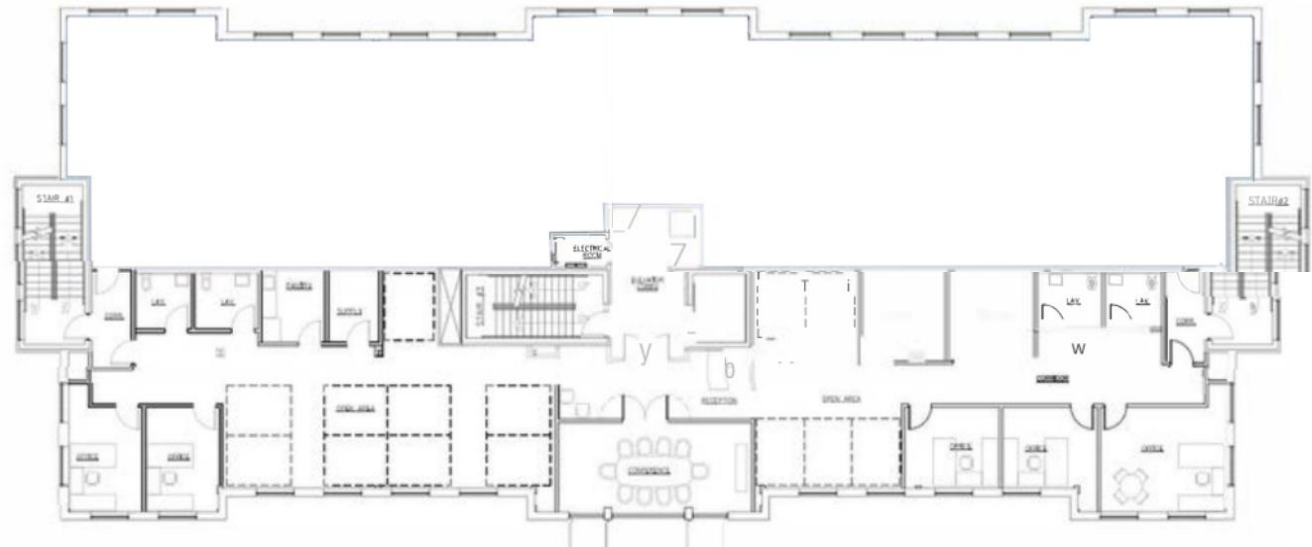
Demographics

1 MILE RADIUS

2024 Avg Household Income	\$87,577
2024 Med Household Income	\$71,480
2024 # of Households Estimate	6,103
2029 # of Households Estimate	6,008

2024 Population Estimate

2 MILE	5 MILE
54,420	309,711



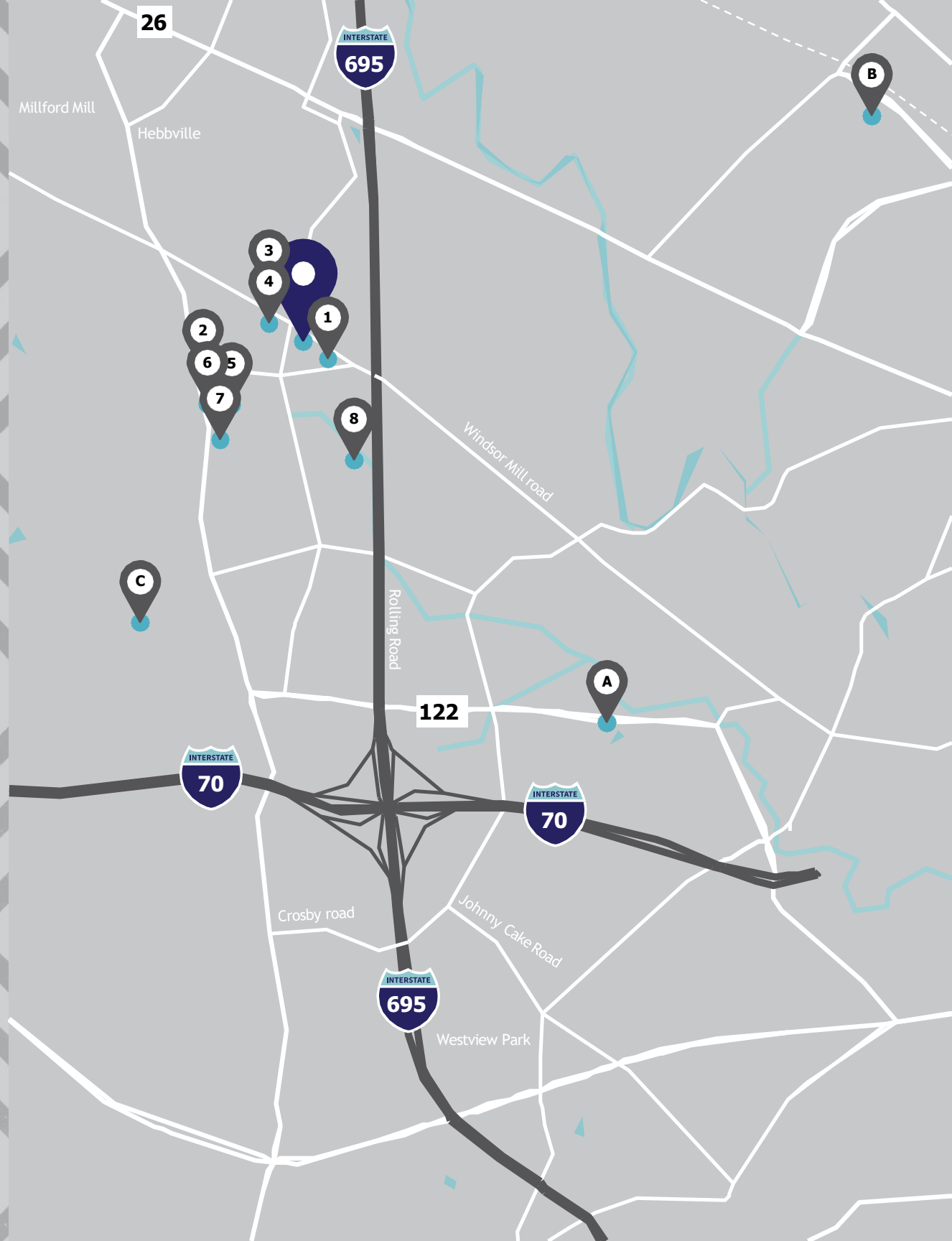
WINDSOR MILL MEDICAL PLAZA

MAJOR EMPLOYERS

- A. Social Security Administration
6401 Security Boulevard, Woodlawn, MD
- B. Social Security Administration
6100A Wabash Ave, Baltimore, MD 21215
- C. Center for Medicare and Medicaid
7500 Security Blvd, Woodlawn, MD

DINING OPTIONS

- 1. Corinthian Lounge & Restaurant
- 2. Wawa
- 3. 1137 Seafood
- 4. Windsor Inn Crab House
- 5. Kokoyami Grill & Wings
- 6. Buffalo Wild Wings 'Go'
- 7. Subway
- 8. Jae's Grill



WINDSOR MILL MEDICAL PLAZA

2925 Lord Baltimore Dr
Windsor Mill, MD

Dominic Digiovannantonio
Vice President
+1 410 952 9444

Robert Freedman
Managing Director
+1 410 952 9444

Anne Marie Paintsil
Senior Associate
+1 410 960 6047



jll.com

Although information has been obtained from sources deemed reliable, JLL does not warrant the completeness, accuracy or reliability of the information contained herein. Any projections, opinions, assumptions or estimates used are for informational purposes only. There may be differences between projected and actual results, and those differences may be material. JLL does not accept any liability for any loss or damage caused by reliance on the information. The recipient of this information has signed a confidentiality agreement with JLL regarding this matter, this information is subject to the terms of that agreement. ©2014 JLL. All rights reserved.