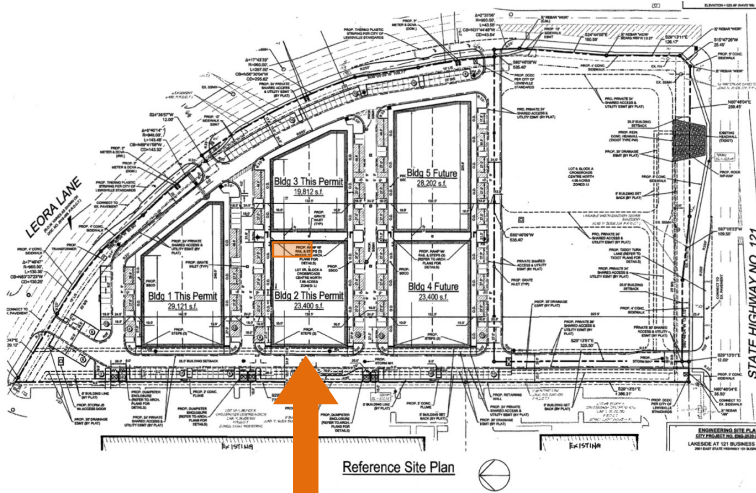


Location:
 Prime Office Showroom -
 Lewisville
 2601 E Highway 121, Suite
 201
 Lewisville, Texas 75056

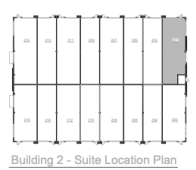
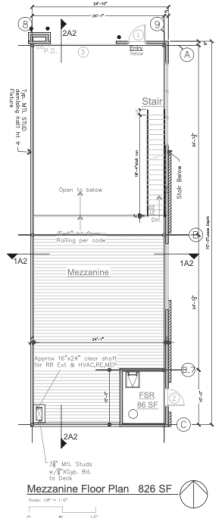
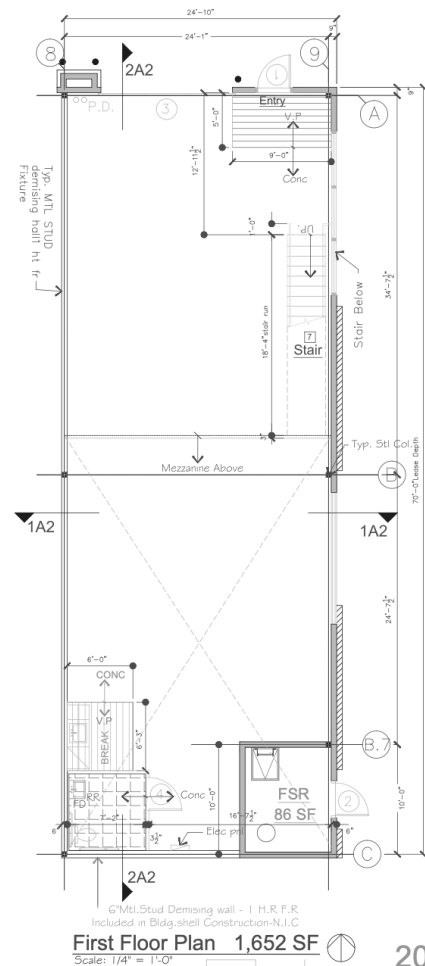


Space Available:
 Fully Finished
 Flex Office / Showroom /
 Warehouse Space Available
 2,478 RSF

Site & Floor Plan



Sam Rayburn
 Tollway
 TOLL



First Floor Plan 1,652 SF
 Scale: 1/4" = 1'-0"

201 BUILDING 2

The information contained herein was obtained from sources deemed reliable; however Legacy Commercial LLC. makes no guarantees, warranties or representations as to the completeness or accuracy thereof, the presentation of this real estate information is subject to errors: omissions; change of price; subject to prior sale or lease; or withdrawal without notice.

FOR MORE INFORMATION CONTACT
 O: 972.292.1220 / www.LCRTexas.com
 Joe Martinez C: 214.535.1876 / Tito Martinez 972.533.3621
 Martinez@LCRTexas.com / Tito@LCRTexas.com