



OFFICE SPACE IN HISTORIC DOWNTOWN OLYMPIA BUILDING



101 CAPITOL WAY N, OLYMPIA, WA | THE HISTORIC MOTTMAN BUILDING

A beautiful, well-maintained, historic office and retail building in downtown Olympia at the intersection of Capitol Way and 4th Avenue E. Reserved parking is available across Capitol Way in a 31-stall lot.

LISTING INFORMATION

SUITE 202: Small second-floor office space with one private office and large windows that offer abundant natural light. Positioned close to elevator access.

893 SF

CBA# 39797507

\$17.85/SF, FULL SERVICE



This information, while obtained from sources we deem reliable, is not guaranteed. It is provided without any representation, warranty or guarantee, expressed or implied as to its accuracy. Prospective buyer or tenant should conduct an independent investigation and verification of all matters deemed to be material, including, but not limited to, statements of income and expenses. Consult your attorney, accountant, or other professional advisor.

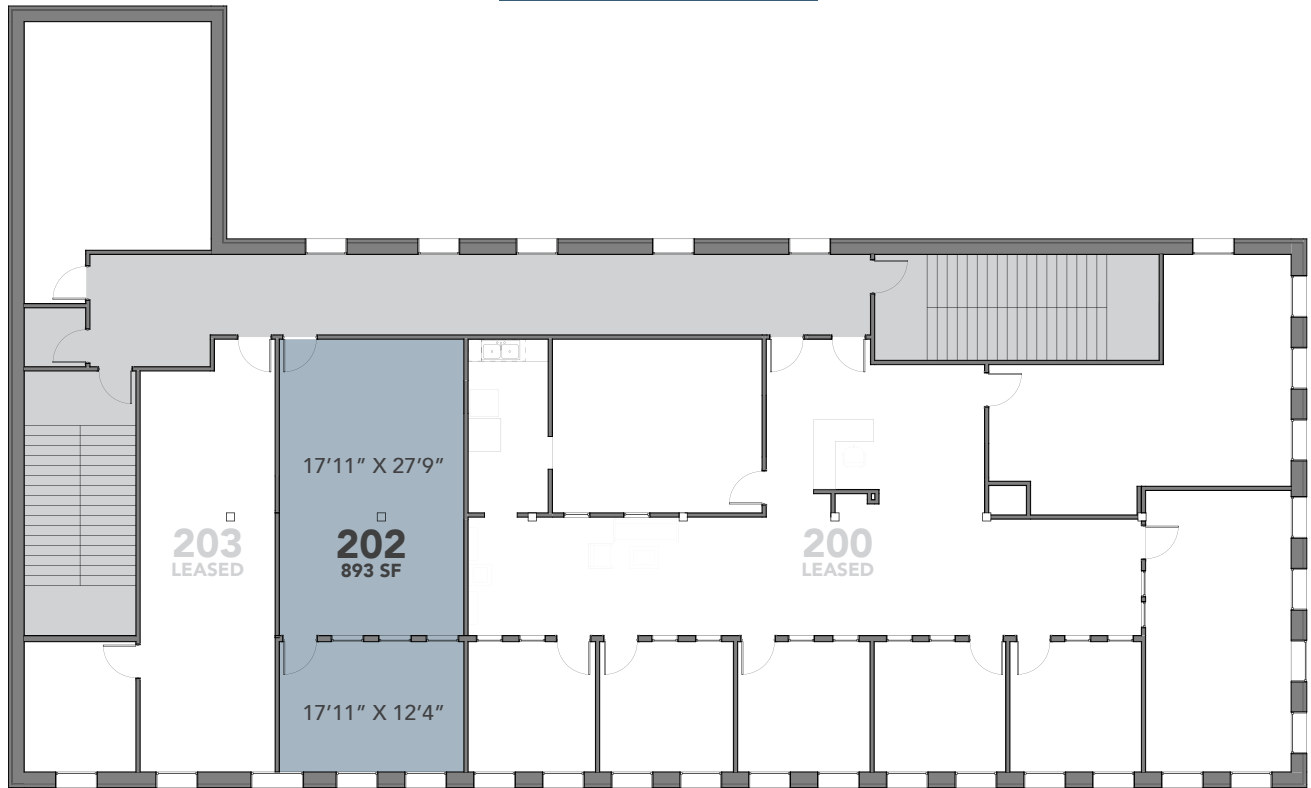


Zeke Rehn
MANAGING BROKER
(360) 915-5678
zeke@rantsgroup.com

360-943-8060
RANTSGROUP.com

101 CAPITOL WAY N, OLYMPIA, WA | THE HISTORIC MOTTMAN BUILDING

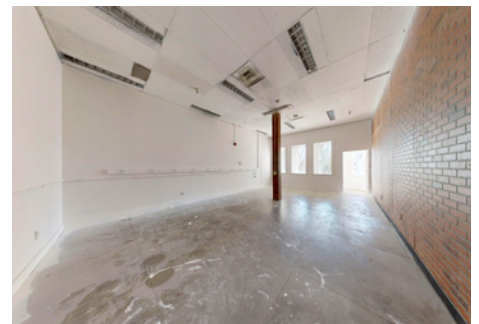
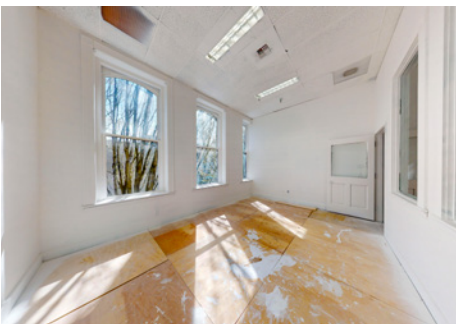
SECOND FLOOR



■ AVAILABLE



THIS FLOORPLAN IS NOT TO SCALE



CONTACT

Zeke Rehn
MANAGING BROKER
(360) 915-5678
zeke@rantsgroup.com



rants.group/Mottman202

This information, while obtained from sources we deem reliable, is not guaranteed. It is provided without any representation, warranty or guarantee, expressed or implied as to its accuracy. Prospective buyer or tenant should conduct an independent investigation and verification of all matters deemed to be material, including, but not limited to, statements of income and expenses. Consult your attorney, accountant, or other professional advisor.

360-943-8060 | RANTSGROUP.com