



# Industrial Property For Sale Or Lease, Available: 62,617 sq. ft. 19 Harbor Park Dr, Port Washington



### Specifications:

**Building Size:** 62,617 sq. ft.  
**Lot Size:** 4.18 Acres  
**Office Space:** 12,843 sq. ft.  
**Ceiling Height 1:** 22.0' @ 49,774 sq. ft.  
**Ceiling Height 2:** 12.0' @ 12,584 sq. ft.  
**Loading:** 6 Dock(s), 1 Drive-in(s)  
**Power:** 1,200 amps  
**A/C:** Offices Only  
**Parking:** 99  
**Sewers:** Yes

### Pricing and Timing:

**Occupancy:** 1/1/2025  
**Sale Price:** \$18,750,000  
 (\$299.44/sq. ft.)  
**Lease Price:** \$ 18.00 Net  
**Taxes:** \$312,105.77 (\$4.98/sq. ft.)

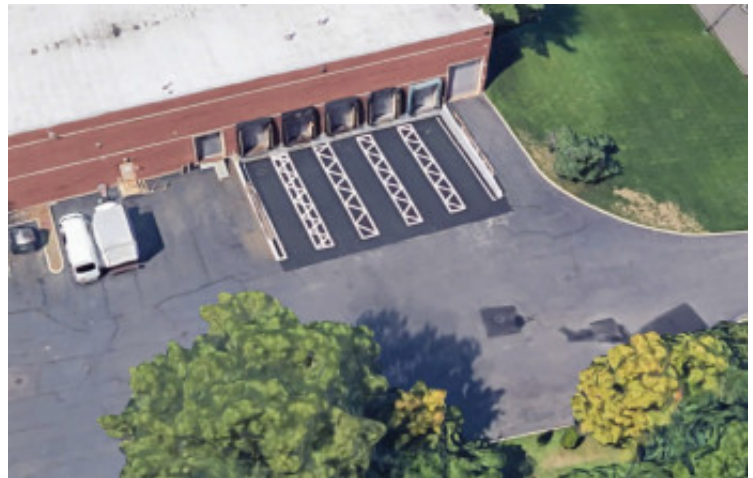
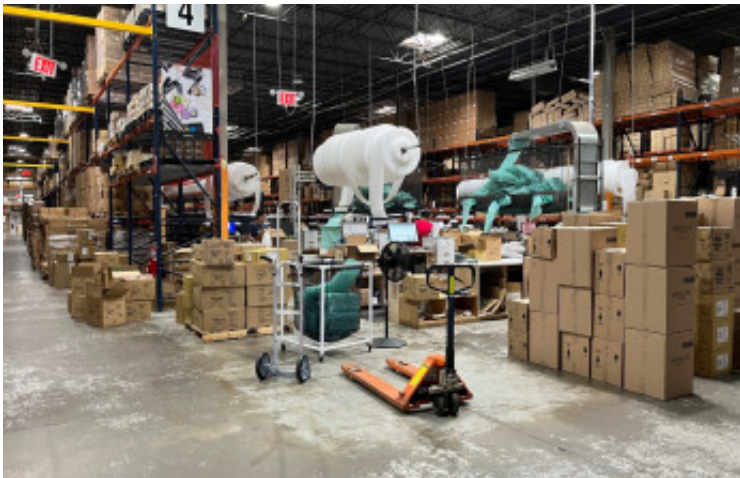
Pristine Corporate HQ industrial building with Class A+ offices located in Nassau's most desirable industrial park, +/-6.5 miles to NYC border, High end office furniture and excellent condition pallet racking available. Back-up generator, LED lighting, Fu



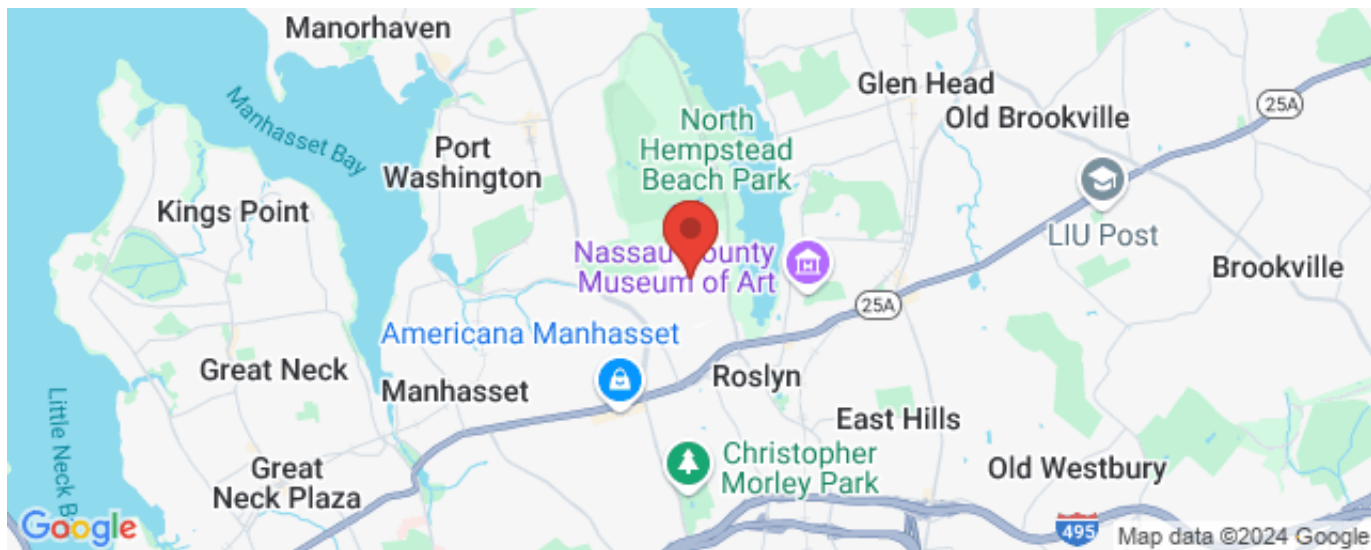
**James Parnes, RE Salesperson**  
 516-732-7864 (cell)  
 631-293-3700 x45  
[jp@schackerrealty.com](mailto:jp@schackerrealty.com)



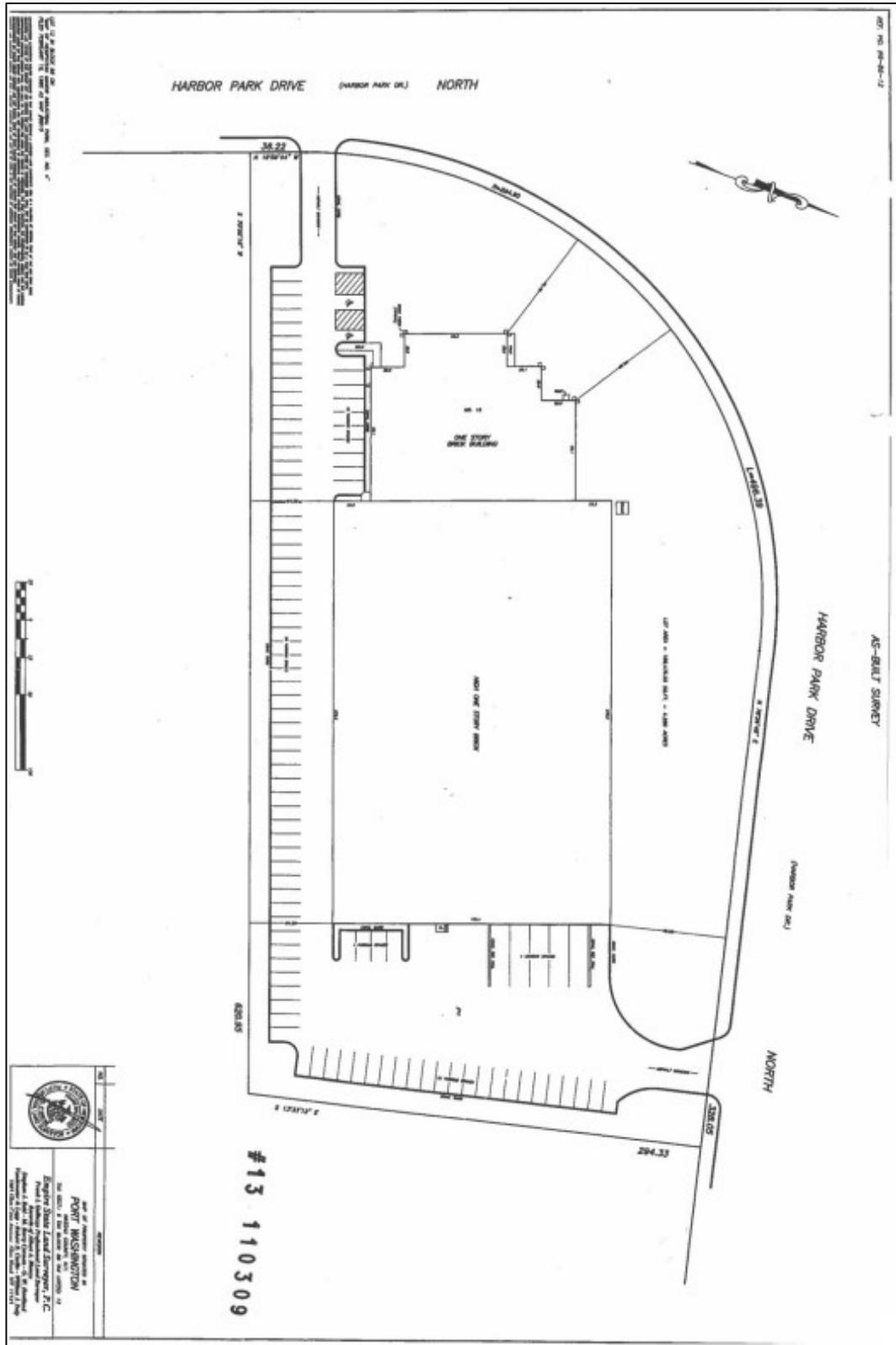
**Philip Shwom, SIOR, CCIM, President**  
 631-786-4422 (cell)  
 631-293-3700 x39  
[ps@schackerrealty.com](mailto:ps@schackerrealty.com)  
 Real Estate Broker



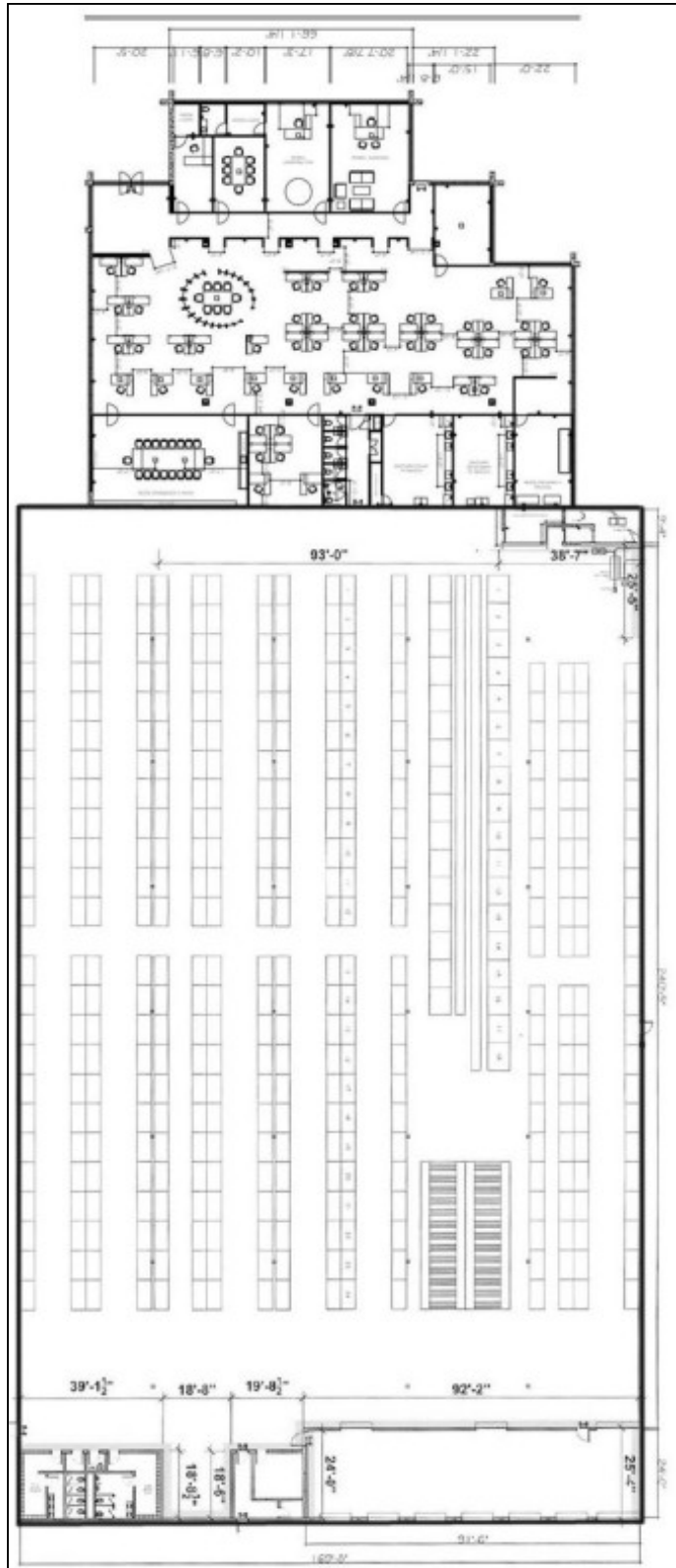
All information is subject to errors, omissions, modification, and withdrawal.  
Measurements may be estimates and information shown should not be relied upon without independent verification.



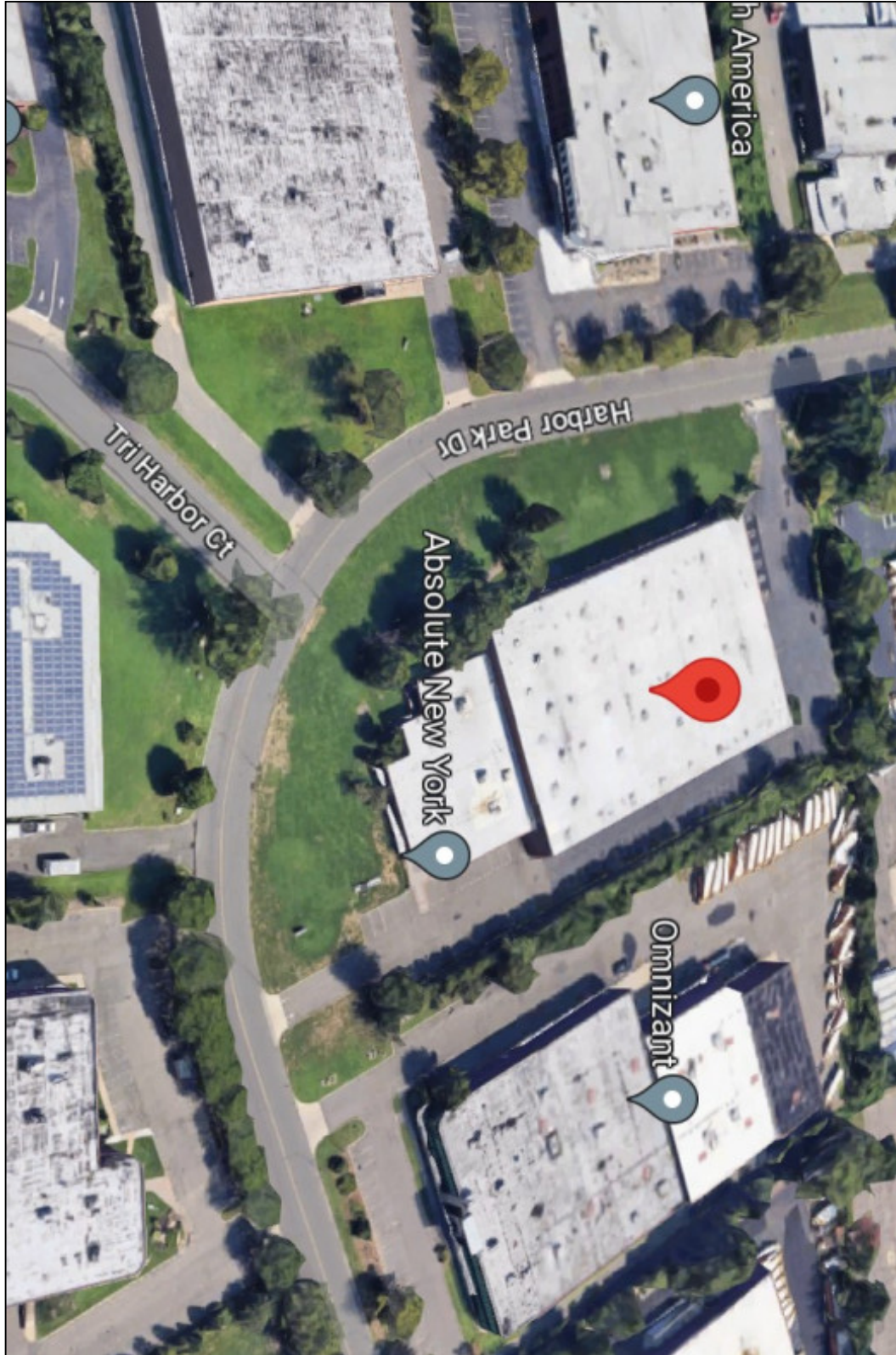
All information is subject to errors, omissions, modification, and withdrawal.  
Measurements may be estimates and information shown should not be relied upon without independent verification.



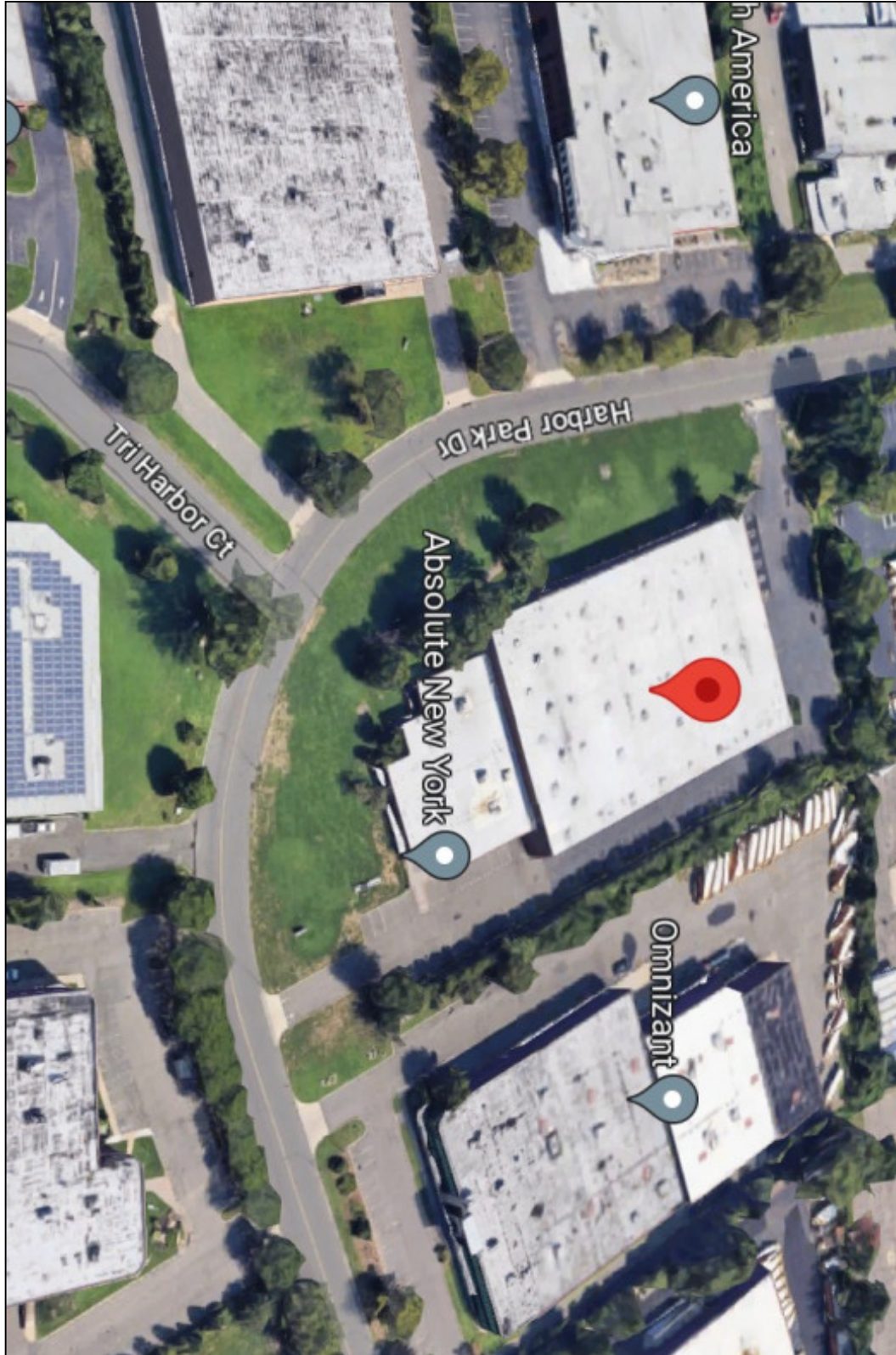
All information is subject to errors, omissions, modification, and withdrawal. Measurements may be estimates and information shown should not be relied upon without independent verification.



All information is subject to errors, omissions, modification, and withdrawal.  
Measurements may be estimates and information shown should not be relied upon without independent verification.



All information is subject to errors, omissions, modification, and withdrawal.  
Measurements may be estimates and information shown should not be relied upon without independent verification.



All information is subject to errors, omissions, modification, and withdrawal.  
Measurements may be estimates and information shown should not be relied upon without independent verification.