



445 SOUTH 400 WEST

Salt Lake City, UT 84101

PROPERTY DESCRIPTION:

- Glass Roll-Up Garage Doors
- Brick Patio
- Parking On-Site
- Loading Dock
- Warehouse Space
- Gated Building with Secured Parking
- 400 AMPS, 3 Phase Power

LEASE RATE:

NEGOTIABLE

PROPERTY DETAILS:

3,700 - 5,500 SF

JORDAN B. SMITH

385.259.8007

jordan@iproperties.com

51 East 400 South Suite 210
Salt Lake City, UT 84111
801.355.0600 | iproperties.com



PROPERTY DESCRIPTION

Available now, this historic space features exposed brick and wooden beams throughout creating a unique setting for office, retail, restaurant, or a bar. Located on the east side of the space is a private brick patio providing a picturesque outdoor dining space. For more information or to schedule a private tour, please contact the listing broker.

LOCATION DESCRIPTION

Located near the heart of downtown with easy access to freeways and surrounding amenities.

OFFERING SUMMARY

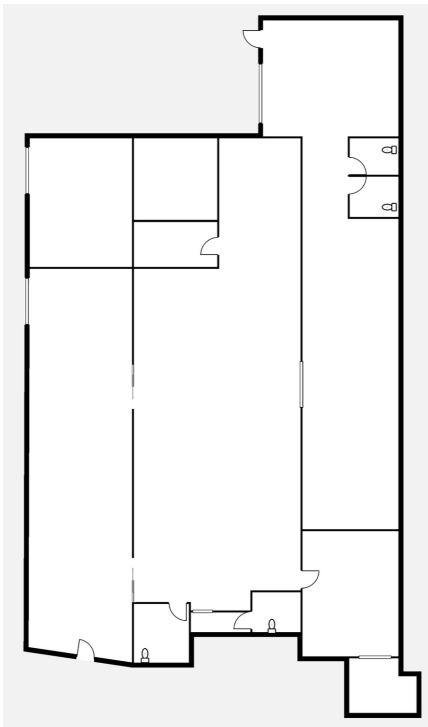
Lease Rate:	Negotiable
Available SF:	3,700 - 5,500 SF
Lot Size:	1.12 Acres
Building Size:	16,000 SF

JORDAN B. SMITH

385.259.8007

jordan@iproperties.com

51 East 400 South Suite 210
Salt Lake City, UT 84111
801.355.0600 | iproperties.com





JORDAN B. SMITH

385.259.8007

jordan@iproperties.com

51 East 400 South Suite 210
Salt Lake City, UT 84111
801.355.0600 | iproperties.com