

FOR SALE

Former Bank Branch



709 E. Main Street | Jefferson, NC 28640

Asking Price:
\$899,000

Steve Rich, CCIM
Senior Vice President
+1 704 409 2375
steve.rich@colliers.com



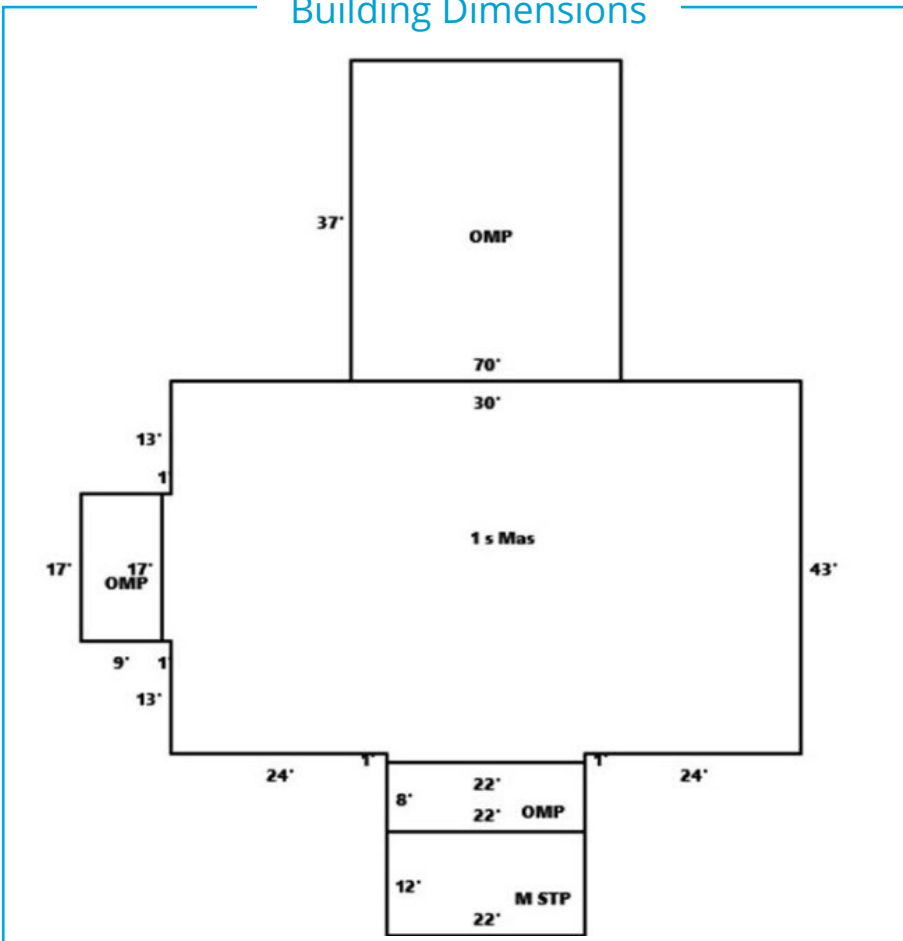
Accelerating success.






Specifications

Address:	709 E. Main St, Jefferson, NC 28640	Year Built:	1995
Site Area:	±2.435 Acres	Status:	Closed Bank
Building Square Footage:	± 3,049	Parking:	35
County:	Ashe	Zoning:	Commercial
Tax Parcel ID:	09263001625	Drive-Thru Lanes:	3 Lanes

Building Dimensions



Area Demographics

 Current Population (2023)	 Average Household Income (2023)	 Traffic Counts (2020)
1 Mile: 1,306	1 Mile: \$50,897	12,000 VPD
3 Miles: 6,040	3 Miles: \$54,080	US HWY 221
5 Miles: 10,867	5 Miles: \$58,733	





Contact Us:

Steve Rich, CCIM
Senior Vice President
+1 704 409 2375
steve.rich@colliers.com

300 W. Summit Avenue
Suite 200
Charlotte, NC 28203
P: +1 704 409 9933
colliers.com/charlotte

