

Kenneth A. Rogers
 Architect
 Architecture and Planning
 License # C 016263
 1420 Rodriguez Street
 Santa Cruz, CA 95062
 PH: (831) 475-7133
 FAX: (831) 475-3360

License Stamp:

TENANT IMPROVEMENTS FOR
 V N A SUTTER
 SANTA CRUZ

SOQUEL AVENUE
 SANTA CRUZ, CA

Sheet Title:
 SITE PLAN

Drawing Status:

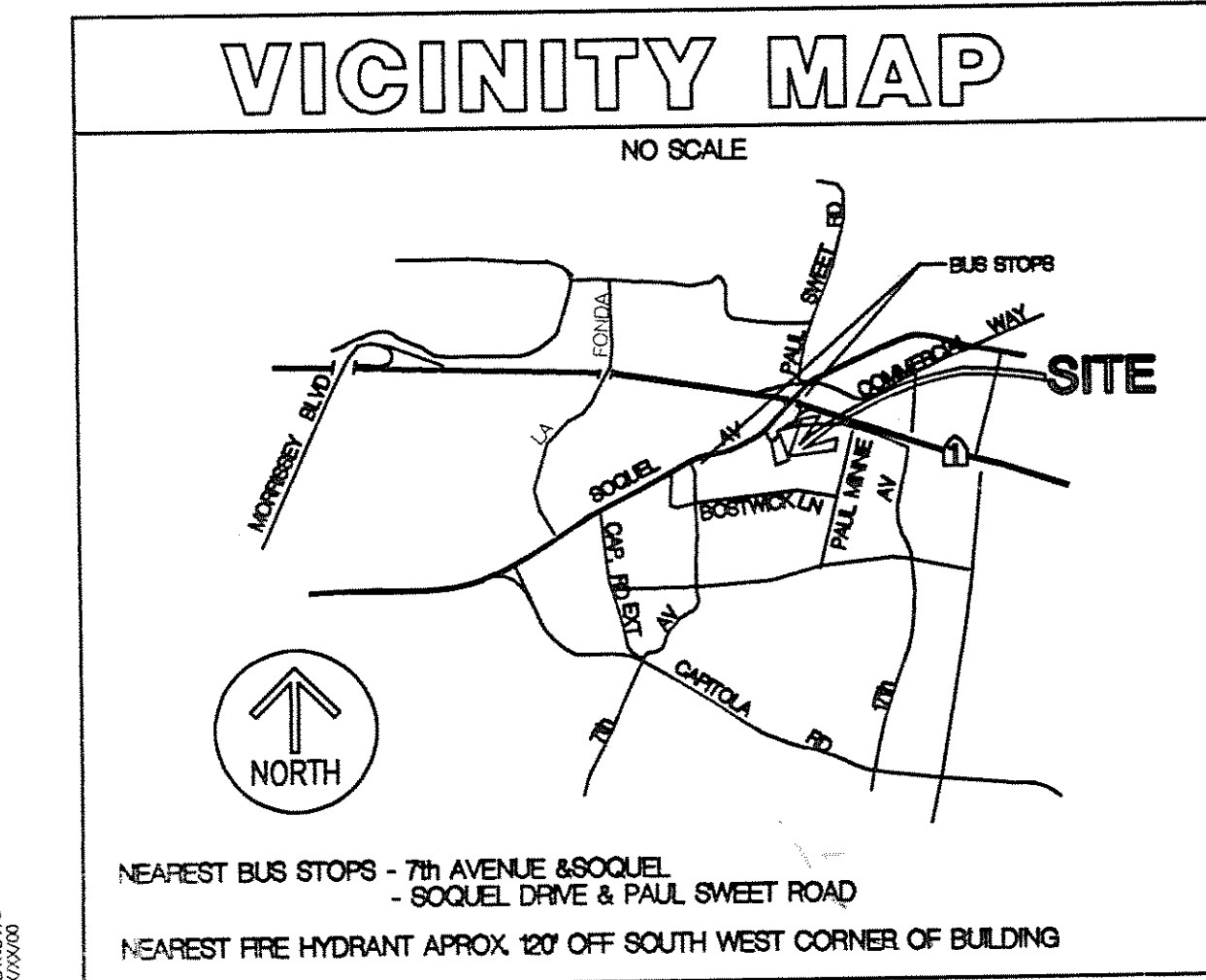
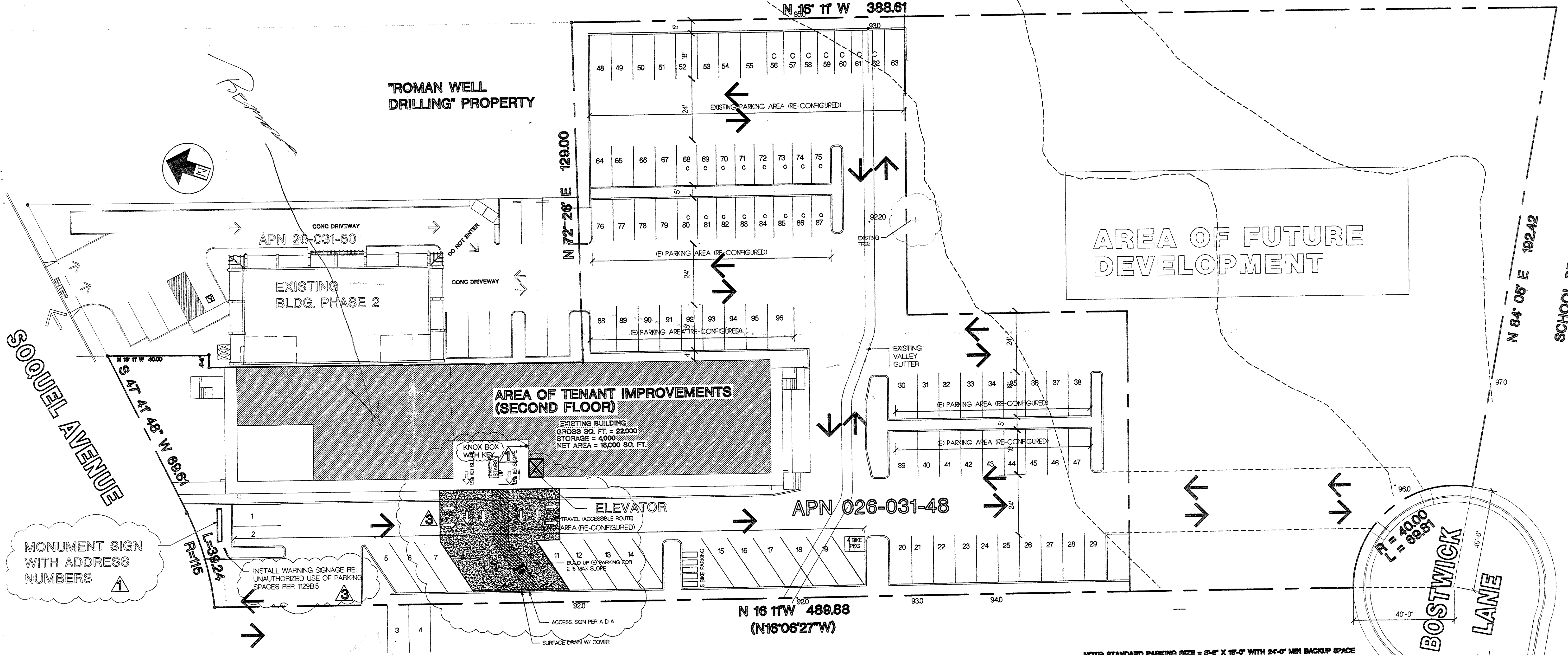
No.	Description	Date
1	ADDRESS & KNOX BOX	9/28/04
2	BLDG. CODE LEGEND	11/23/04
3	ADA REQS	11/23/04

Date:	11/23/04
Drawn by:	KAR
Scale:	AS NOTED
Job No.:	0419

Sheet No.:
A-1
 of

STORAGE U. S. A.

OK
Scale
12/7/04
See changes in blue
#3



EXISTING "AUTO CENTER" PARKING
OVERALL SITE PLAN
 SCALE 1" = 20'

NOTE: SEE APPROVED GRADING AND STORM DRAINAGE PLANS PREPARED BY DAVENPORT AND HAWLEY CIVIL ENGINEERS & LAND SURVEYORS, SEPT, 1982

APPROVED
 BY _____
 DATE _____

NOTE: STANDARD PARKING SIZE = 5'-6" X 15'-0" WITH 24'-0" MIN BACKUP SPACE
 COMPACT PARKING SIZE = 7'-6" X 15'-0"
 ALL PARKING SPACES TO HAVE CURBS OR WHEEL STOPS
 TOTAL PARKING SPACES PROVIDED = 86
 71 STANDARD, 2 ACCESSIBLE, & 23 COMPACT
 9 BICYCLE SPACES PROVIDED (2' X 6')

BUILDING CODE LEDGEND:
 OCCUPANCY TYPE "B"
 CONSTRUCTION TYPE VN
 (FULLY SPRINKLERED)

INDEX TO DRAWINGS

DRAWING NUMBER	CONTENTS
A-1	SITE PLAN
A-2	FIRST FLOOR PLAN
A-3	SECOND FLOOR PLAN
E-1	ELECTRICAL PLAN
M-1	MECHANICAL PLAN
EL-1	ELEVATOR PLAN
ADA1	A D A DETAILS