



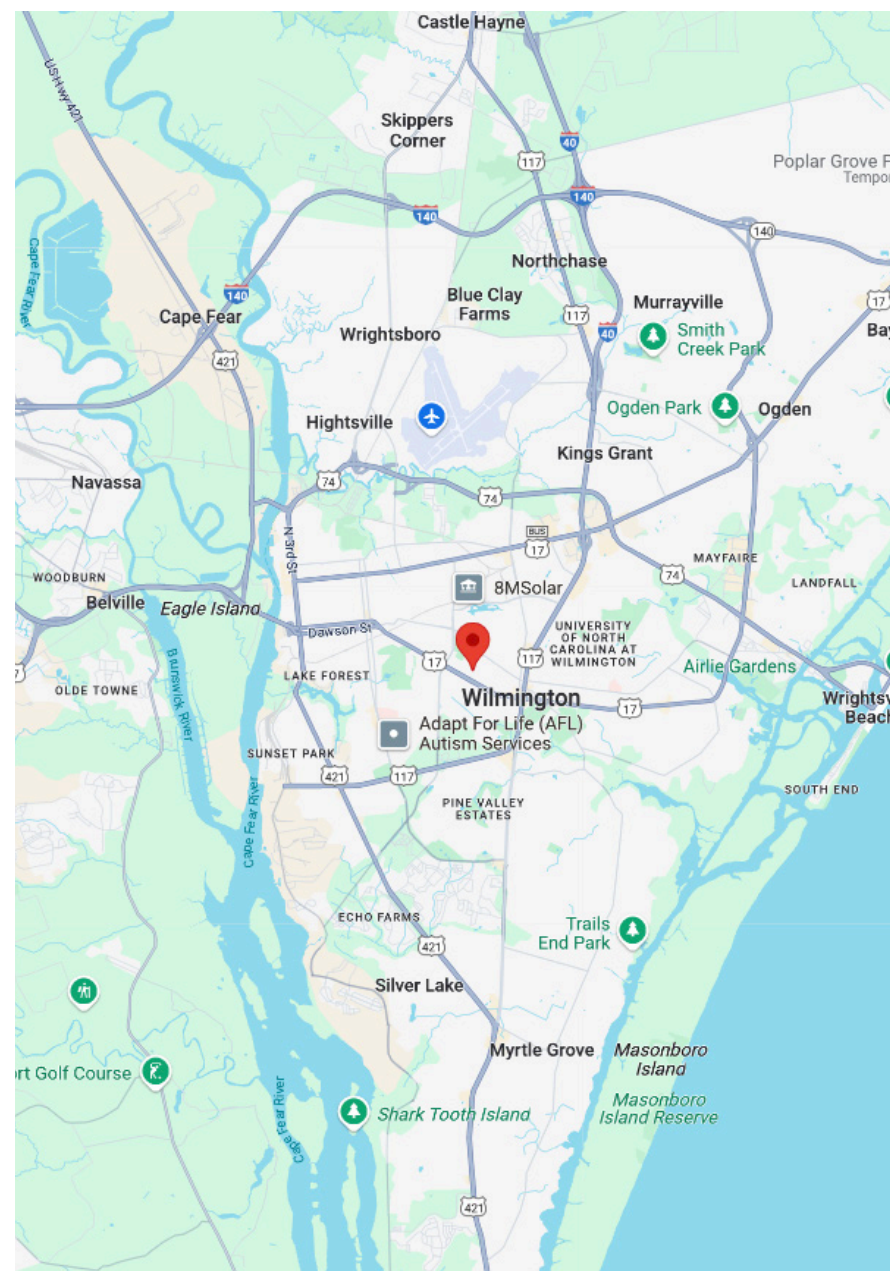
Corner Retail / Office Building
1305 Floral Pkwy
For Lease | Wilmington, NC



Overview

Status:	For Lease
Property Type:	Retail
Size:	2,400 SF
Zoning:	RB
County:	New Hanover
Asking Price:	\$5,200/month

Great mid-town corner freestanding retail building next to Hanover Center. RB zoning allows many retail and office uses. Wide open floorplan is great for retail and easy for new office build-out. Access to both Floral Pkwy and Park Ave. makes for convenient parking and deliveries.



Property Information

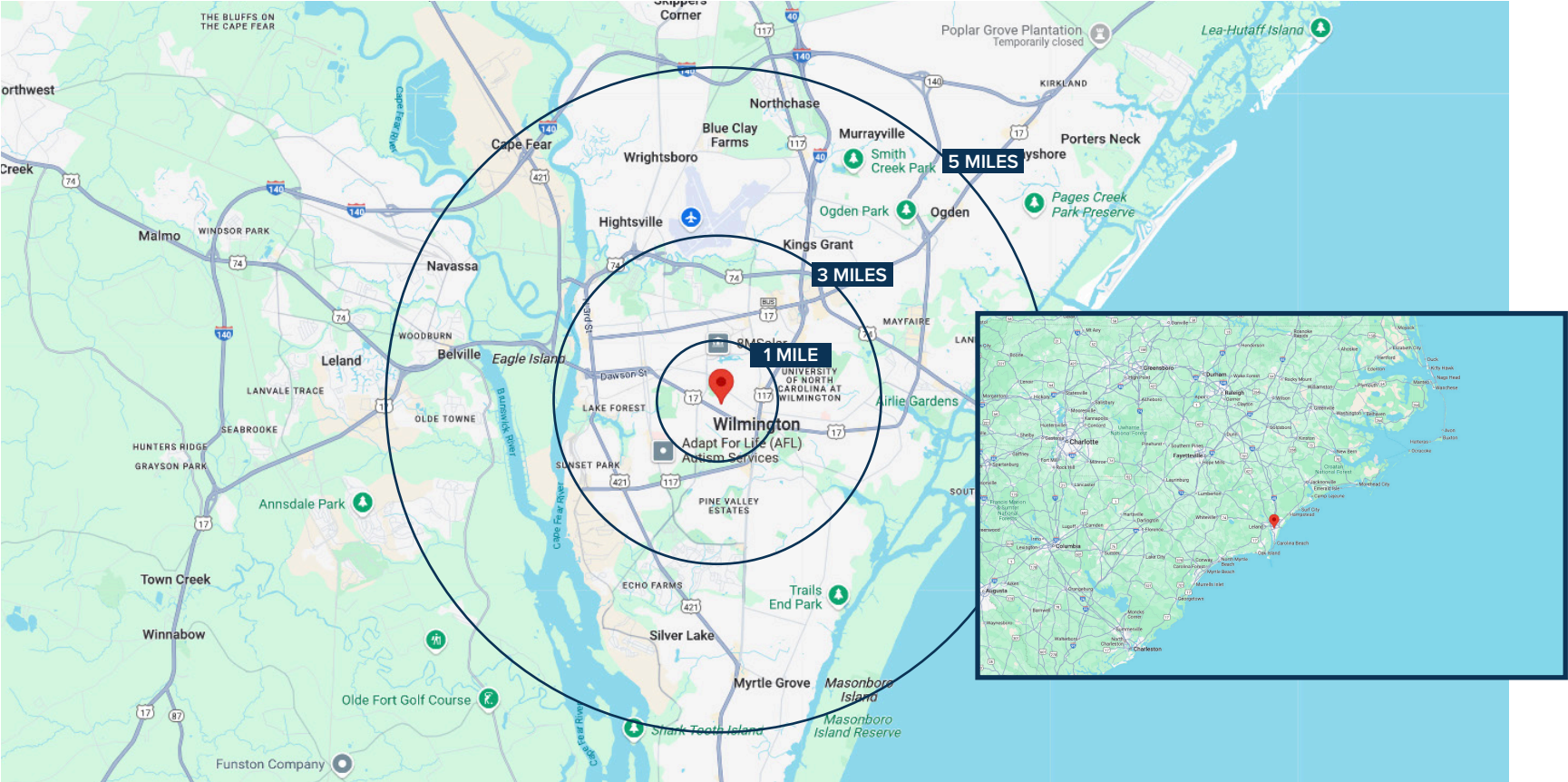


Asking Rate: \$5,200/month
Listing ID: 41812645
Status: For Lease
Property Type: Retail
Secondary Uses: Total Office
Available Space: 2,400 SF Modified
Lease Type: NNN
Lease Terms: 5 Year Min Annual
Rent Esc. Type: 3% Annual

Vacant: YES
Parking Spaces: 12
Zoning: RB
County: New Hanover
Cross Street: Park
Parcels: 3137-21-6737.000
Sub Type: Freestanding
Building Status: Existing
Land Size: 0.32 Acres
of Buildings: 1
of Floors: 1
Occupancy Type: Single Tenant

Demographics

	POPULATION	HOUSEHOLDS	AVG. HH INCOME	EMPLOLYMENT
1 MILE	7,327	8,005	\$49K	3,560
3 MILES	63,969	40,593	\$52K	30,140
5 MILES	118,905	68,616	\$56K	57,903



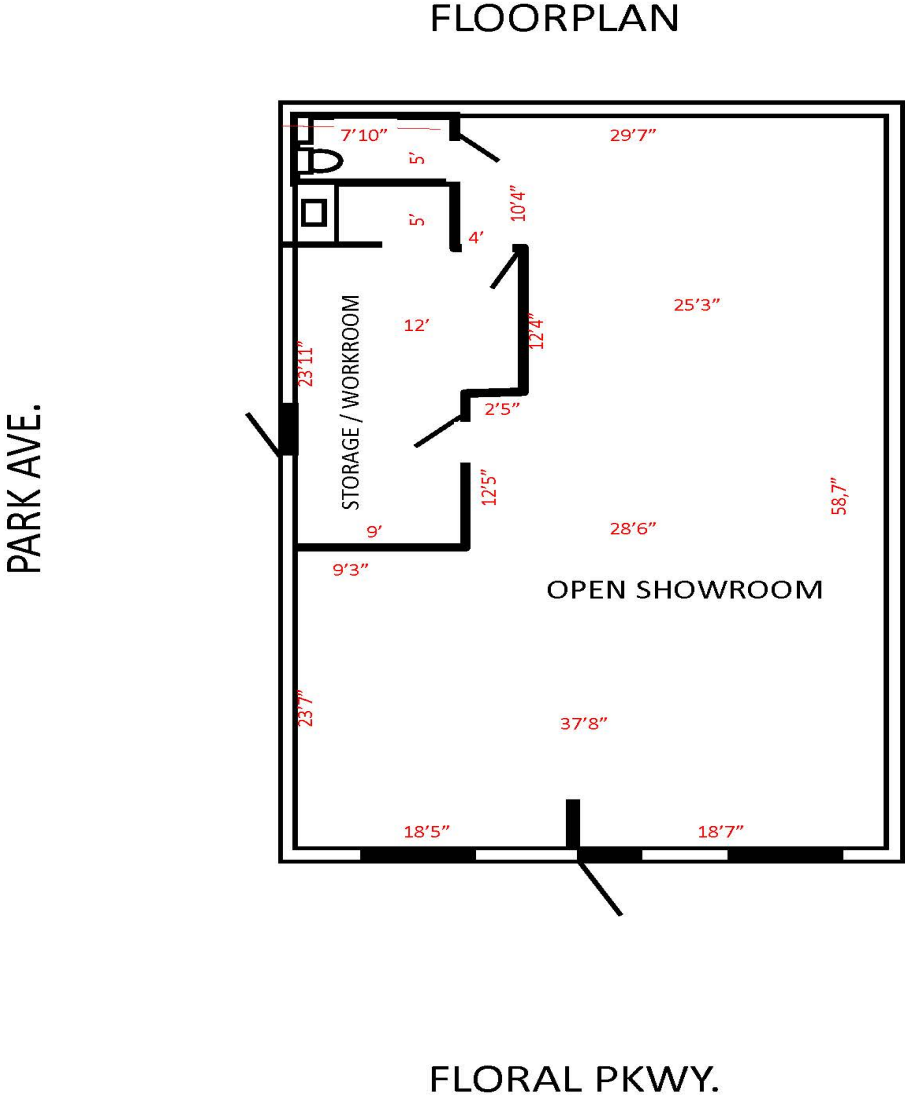
Submarket Overview



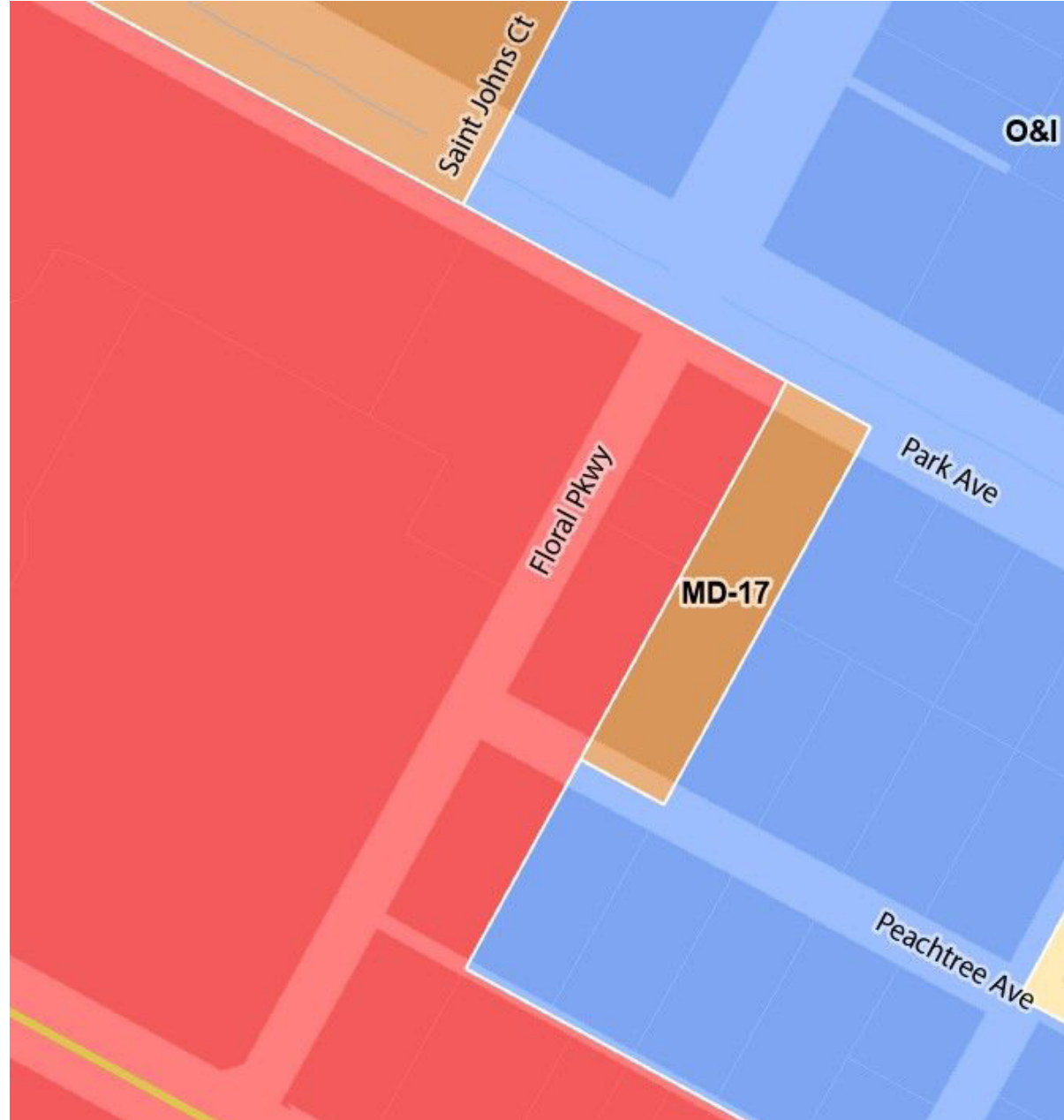
Aerial



Floor Plans



Site Plans



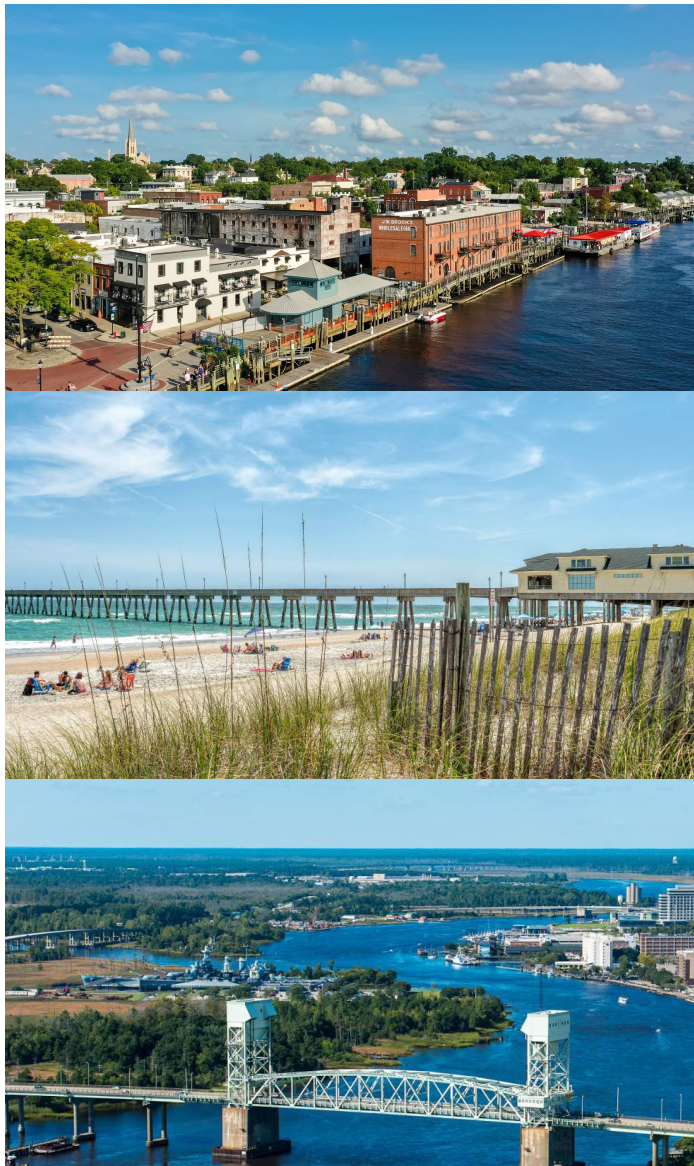
Property Photos



Property Photos



Local Information



📍 Wilmington, NC

Wilmington, North Carolina, is a thriving coastal city offering a blend of rich history, modern amenities, and a vibrant economy. Nestled along the Cape Fear River and just minutes from the Atlantic Ocean, Wilmington boasts an enviable location with stunning natural beauty. The area is a hub for diverse activities, from exploring the historic downtown district with its charming riverwalk and cultural attractions to enjoying outdoor adventures at nearby Wrightsville Beach. Wilmington's economy is robust, driven by a mix of industries including film production, education, healthcare, and a growing tech sector. The city's well-connected infrastructure, anchored by the Port of Wilmington and Wilmington International Airport, supports both business growth and tourism. With a welcoming community, excellent schools, and a range of recreational options, Wilmington offers an ideal environment for both businesses and residents, making it a prime location for commercial investment.

Contact Info

Office

2524 Independence Blvd.
Wilmington NC 28412

910-791-0400

www.mwmrealestate.com

Listing Agent

Jack Kilbourne

910-262-4407

jack@mwmrealestate.com



All information furnished is from sources deemed reliable, but no warranty or representation is made as to the accuracy thereof and same is submitted subject to errors omissions, change of price, rental or other conditions, without notice. No liability of any kind is to imposed on the broker herein.