

OFFICE FOR SALE/LEASE 7625 MAPLE LAWN BLVD

Fulton, MD 20759

Available: 1,358 - 2,286 SF



LISTING DATA

AVAILABLE SF: LL50: 2,286 SF
*Leased to Capital Women's for 3 more years

Ste - 60: 1,358 SF

Total: 3,644 SF

ECONOMIC DATA

LEASE RATE: Ste - 60: \$34.00 SF/yr (Call For Info)

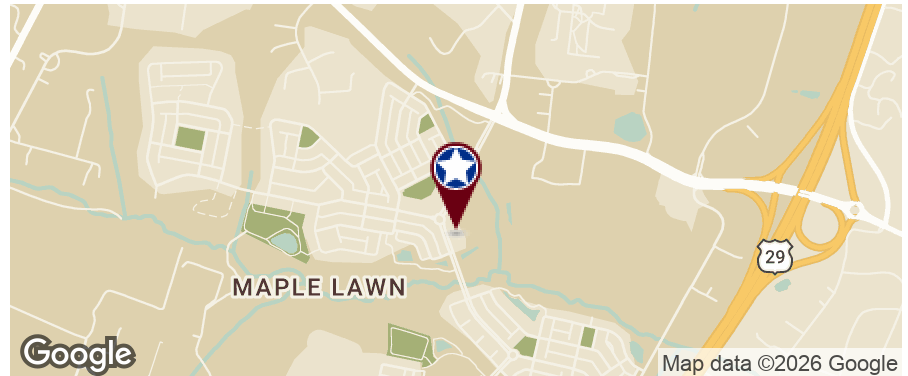
SALE PRICE: LL50 & Ste - 60: \$1,380,400

*Can be sold separate or together

BUILDING DATA

TOTAL BUILDING SF: 65,000 SF

ZONING: MXD3



PROPERTY OVERVIEW

Presenting a premier leasing/sale opportunity at 7625 Maple Lawn Blvd, Fulton, MD. With its versatile spaces, this property is perfectly suited for companies looking to establish or expand their footprint in a dynamic and growing market.

Kate Jordan, SIOR
Principal
410.336.5314
kjordan@lee-associates.com

Kristin Rebeck
Senior Vice President
321.287.8743
krebeck@lee-associates.com

Vina Marufu
Associate
240.328.3002
vmarufu@lee-associates.com

All information furnished regarding property for sale, rental or financing is from sources deemed reliable, but no warranty or representation is made to the accuracy thereof and same is submitted to errors, omissions, change of price, rental or other conditions prior to sale, lease or financing or withdrawal without notice. No liability of any kind is to be imposed on the broker herein.

OFFICE FOR SALE/LEASE 7625 MAPLE LAWN BLVD

Fulton, MD 20759

Available: 1,358 - 2,286 SF



Kate Jordan, SIOR
Principal
410.336.5314
kjordan@lee-associates.com

Kristin Rebeck
Senior Vice President
321.287.8743
krebeck@lee-associates.com

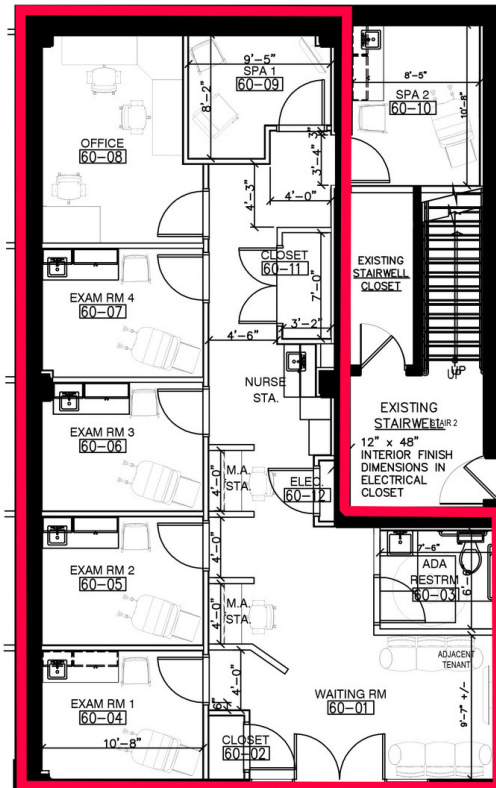
Vina Marufu
Associate
240.328.3002
vmarufu@lee-associates.com

All information furnished regarding property for sale, rental or financing is from sources deemed reliable, but no warranty or representation is made to the accuracy thereof and same is submitted to errors, omissions, change of price, rental or other conditions prior to sale, lease or financing or withdrawal without notice. No liability of any kind is to be imposed on the broker herein.

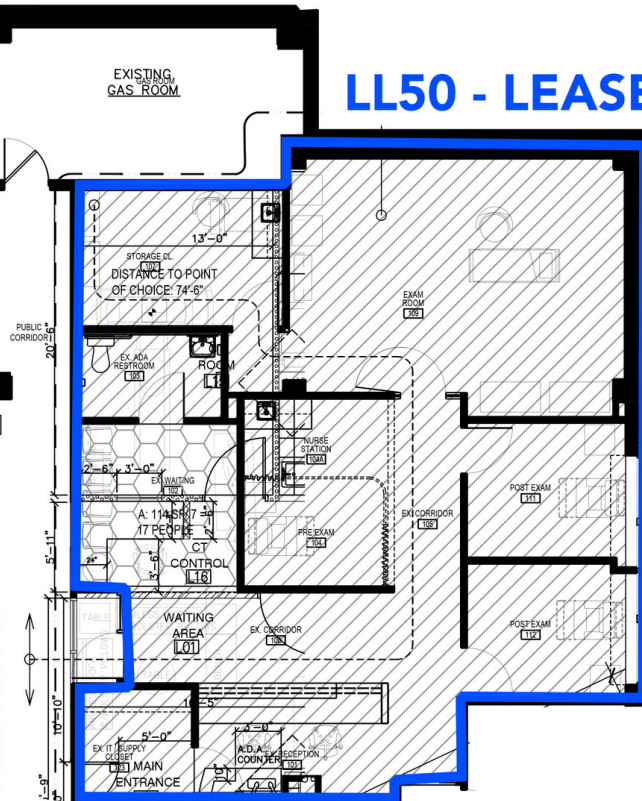
OFFICE FOR SALE/LEASE 7625 MAPLE LAWN BLVD

Fulton, MD 20759
Available: 1,353 SF

LL60 - 1358 SF



LL50 - LEASED



Kate Jordan, SIOR
Principal
410.336.5314
kjordan@lee-associates.com

Kristin Rebeck
Senior Vice President
321.287.8743
krebeck@lee-associates.com

Vina Marufu
Associate
240.328.3002
vmarufu@lee-associates.com

All information furnished regarding property for sale, rental or financing is from sources deemed reliable, but no warranty or representation is made to the accuracy thereof and same is submitted to errors, omissions, change of price, rental or other conditions prior to sale, lease or financing or withdrawal without notice. No liability of any kind is to be imposed on the broker herein.

OFFICE FOR SALE/LEASE 7625 MAPLE LAWN BLVD

Fulton, MD 20759

Available: 1,358 - 2,286 SF



COMMERCIAL REAL ESTATE SERVICES



AVAILABLE SPACES

SUITE	TENANT	SIZE (SF)	LEASE TYPE	LEASE RATE
LL60	Available	1,353 SF	Call For Info	\$34.00 SF/yr

Kate Jordan, SIOR
Principal
410.336.5314
kjordan@lee-associates.com

Kristin Rebeck
Senior Vice President
321.287.8743
krebeck@lee-associates.com

Vina Marufu
Associate
240.328.3002
vmarufu@lee-associates.com

All information furnished regarding property for sale, rental or financing is from sources deemed reliable, but no warranty or representation is made to the accuracy thereof and same is submitted to errors, omissions, change of price, rental or other conditions prior to sale, lease or financing or withdrawal without notice. No liability of any kind is to be imposed on the broker herein.

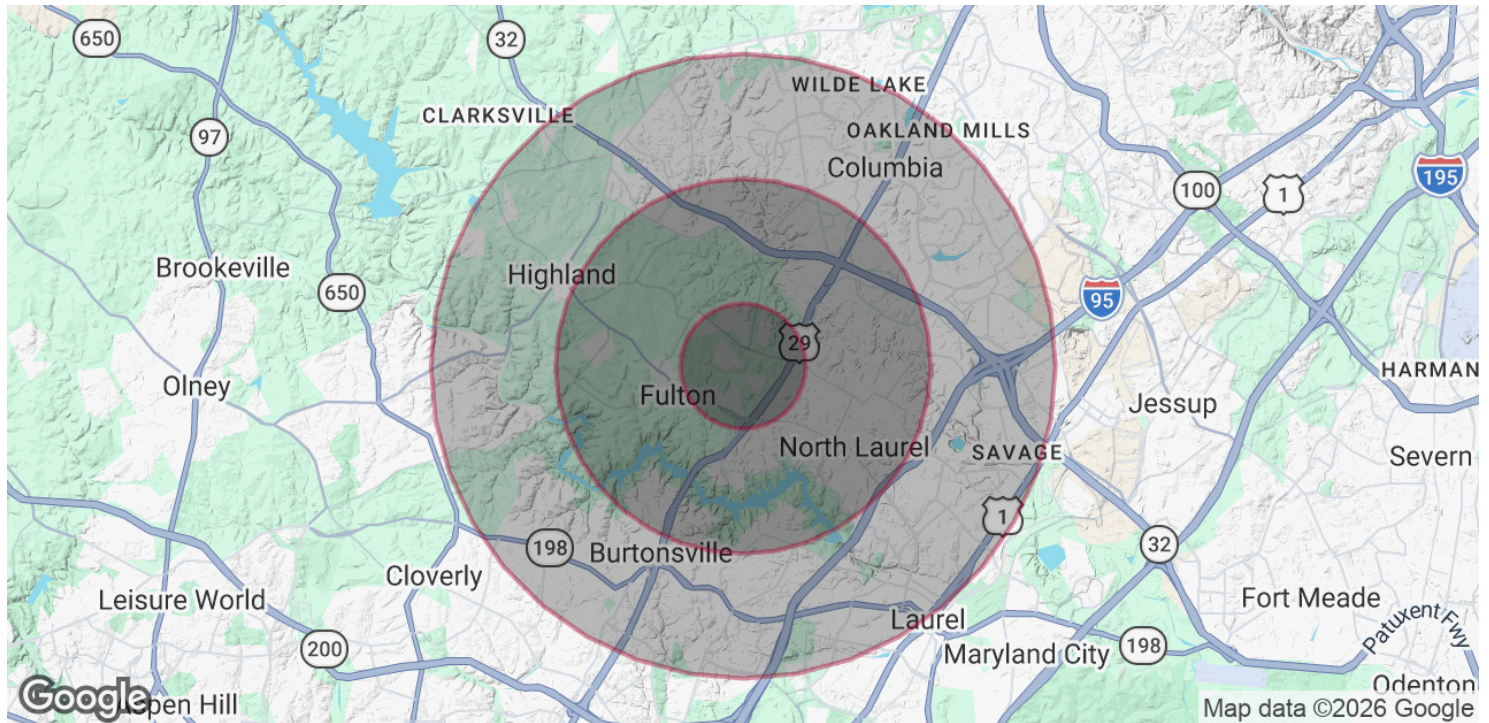
OFFICE FOR SALE/LEASE 7625 MAPLE LAWN BLVD

Fulton, MD 20759

Available: 1,358 - 2,286 SF



COMMERCIAL REAL ESTATE SERVICES



POPULATION

	1 MILE	3 MILES	5 MILES
Total Population	6,727	41,076	164,973
Average Age	37	40	40
Average Age (Male)	37	39	39
Average Age (Female)	38	41	41

HOUSEHOLDS & INCOME

	1 MILE	3 MILES	5 MILES
Total Households	2,141	13,833	59,813
# of Persons per HH	3.1	3	2.8
Average HH Income	\$273,056	\$242,335	\$184,238
Average House Value	\$876,023	\$728,728	\$587,890

Demographics data derived from AlphaMap

Kate Jordan, SIOR
Principal
410.336.5314
kjordan@lee-associates.com

Kristin Rebeck
Senior Vice President
321.287.8743
krebeck@lee-associates.com

Vina Marufu
Associate
240.328.3002
vmarufu@lee-associates.com

All information furnished regarding property for sale, rental or financing is from sources deemed reliable, but no warranty or representation is made to the accuracy thereof and same is submitted to errors, omissions, change of price, rental or other conditions prior to sale, lease or financing or withdrawal without notice. No liability of any kind is to be imposed on the broker herein.