



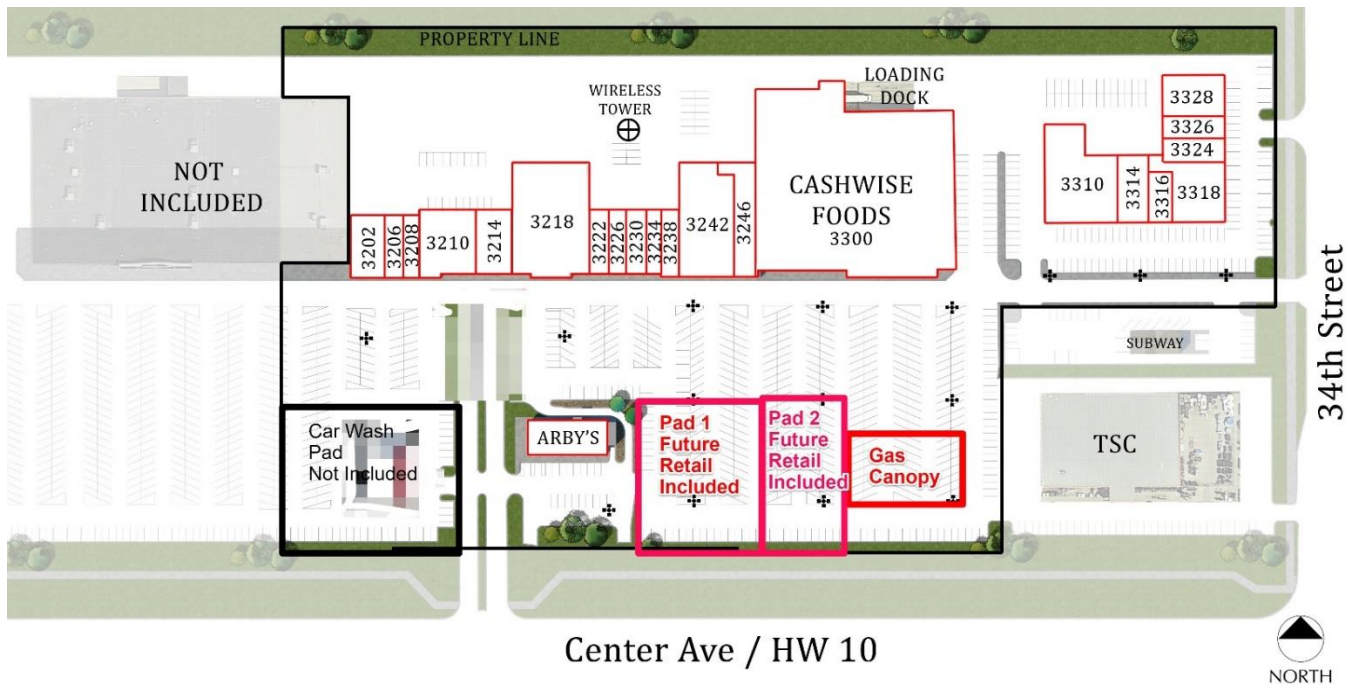
CASH WISE Grocery / Runnings Fleet & Farm Anchored RETAIL FOR LEASE EasTen Shopping Center – Moorhead MN

Property Highlights

- Grocery (Cash Wise Foods) and Runnings Fleet and Farm Anchored
- Target, Walmart, Aldi, shadow anchors across the street
- Chipotle 2024, Arby's Remodel 2024, Starbucks 2023
- Pads available – Single or multi-tenant – Drive Thru possible
- 1,328 to 100,000 sq ft available (via building addition)
- Low operating expenses at \$4.45 psf total CAM/TAX/INS
- 30k Traffic Daily
- **Brokers Welcome!!**

SITE PLAN WITH SUITE NUMBERS:

Listed By: Dixon Diebold
ReUrban, LLC
651-343-1889
dixon@reurbanrealestate.com



Available Suite Schedule:

Suite 3222 1,328 sq ft

Suite 3222 (1328 sq ft) – (Former Eide’s Jewelry)



Cash Wise Foods Grocery

Listed By: Dixon Diebold
 ReUrban, LLC
 651-343-1889
dixon@reurbanrealestate.com



Chipotle - New 2024

Listed By: Dixon Diebold
ReUrban, LLC
651-343-1889
dixon@reurbanrealestate.com



Starbucks – New 2023



Remodeled Arbys 2024



Listed By: Dixon Diebold
ReUrban, LLC
651-343-1889
dixon@reurbanrealestate.com