

FOR SALE

4,395 SF INDUSTRIAL/FLEX



MALMAN
REAL ESTATE



210 East 10th Street, Leadville, CO 80461

Property Highlights

- » Strategic location due to visibility to all traffic coming and going from Leadville on Poplar Street
- » 4,395 SF building on 0.28 AC lot
- » Newly constructed building with extensive HVAC and power capabilities
- » Clear Height: 12' - 19'2"

Sale Price: \$1,100,000

Property Details

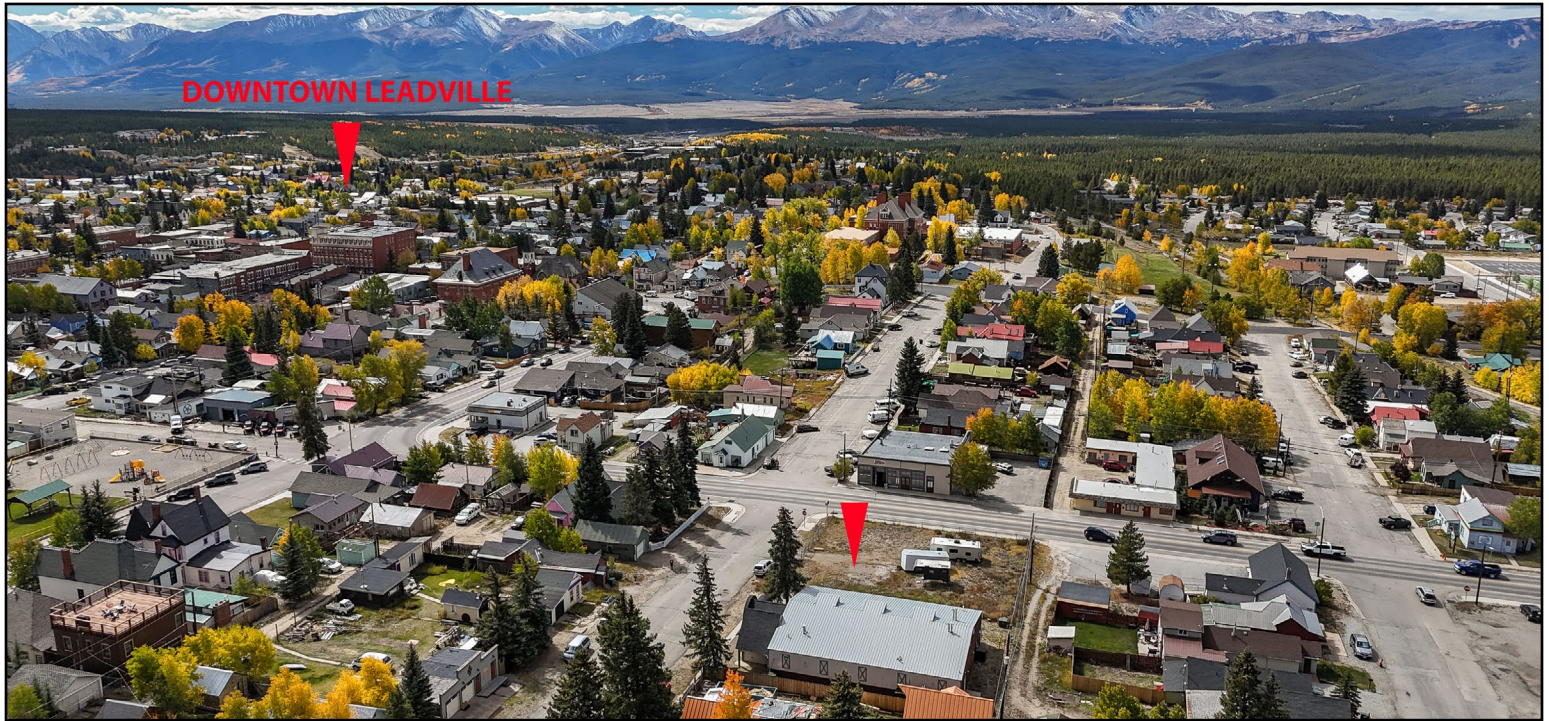
Lot Size	0.28 AC
Power	600 amps, single phase
Zoning	C1
County	Lake
Year Built	2017
Taxes	\$8,682.36 (2024)

For more information:

TAYLOR ROY
949-701-0164
taylor@malmancre.com

FOR SALE

210 East 10th Street, Leadville, CO 80461



For more information:

TAYLOR ROY

949-701-0164

taylor@malmancre.com

FOR SALE

210 East 10th Street, Leadville, CO 80461



MALMAN
REAL ESTATE



For more information:

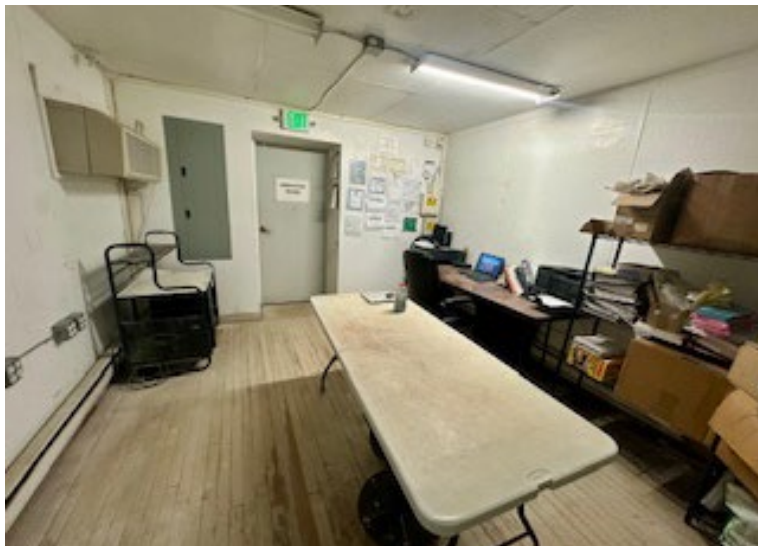
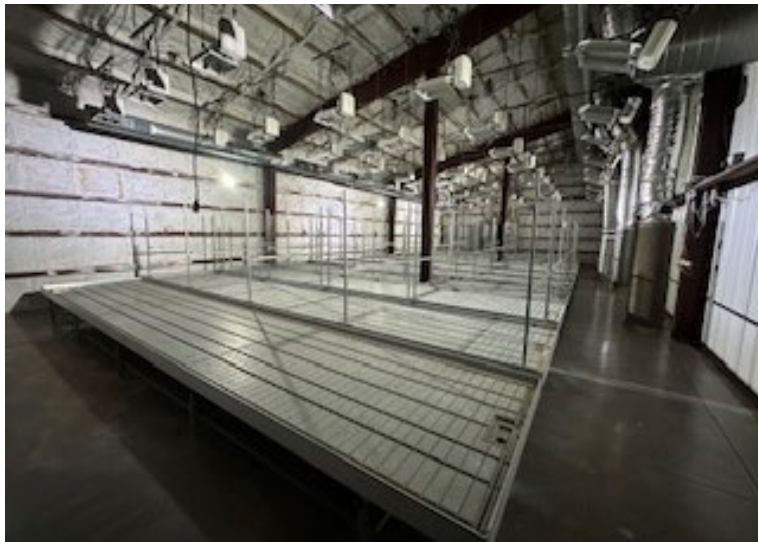
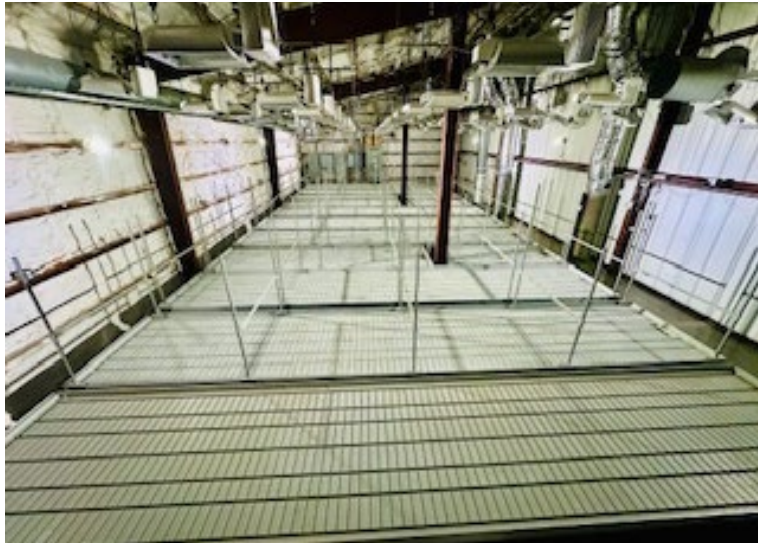
TAYLOR ROY

949-701-0164

taylor@malmancre.com

FOR SALE

210 East 10th Street, Leadville, CO 80461



For more information:

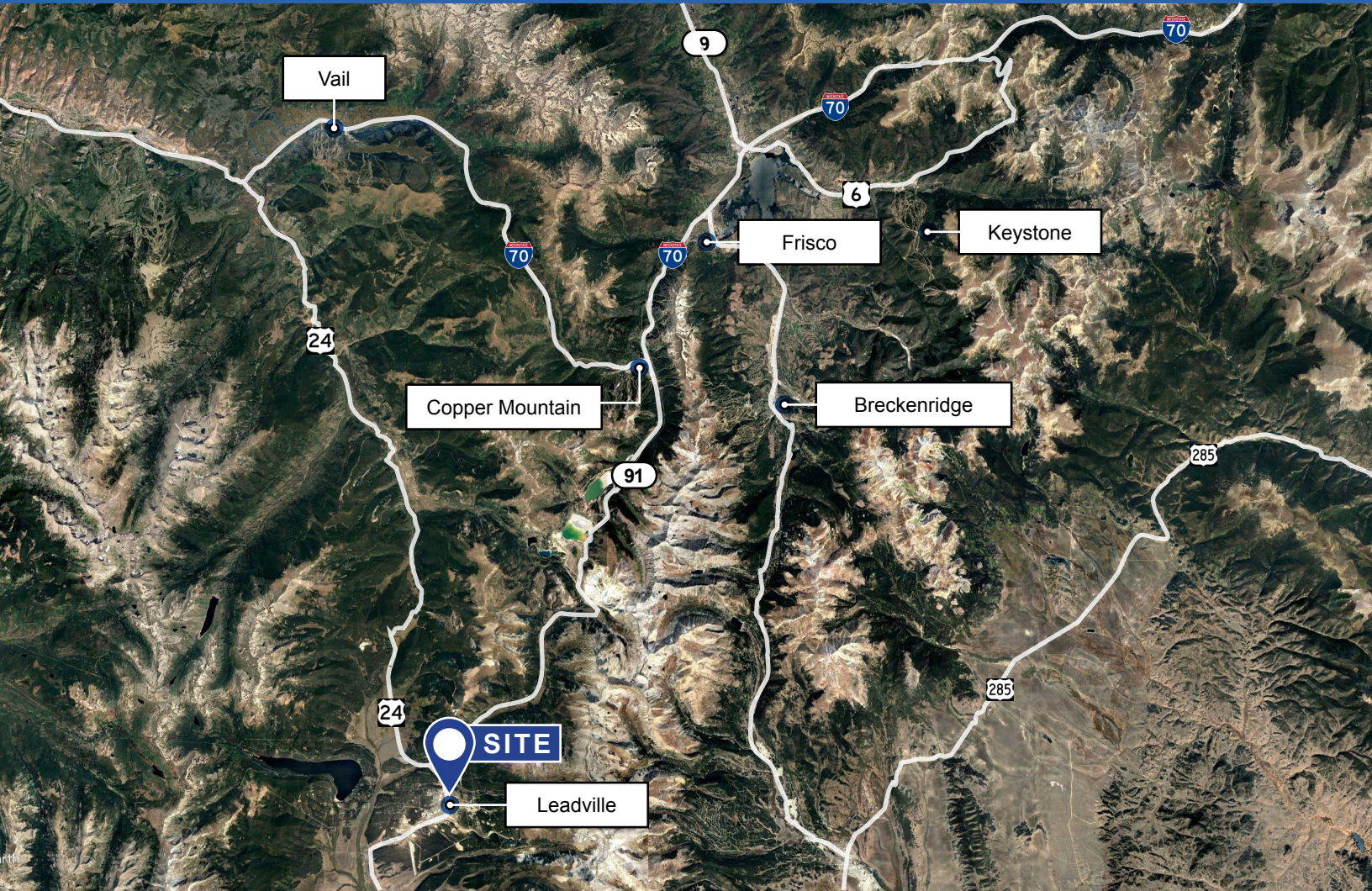
TAYLOR ROY
949-701-0164
taylor@malmancre.com

FOR SALE

210 East 10th Street, Leadville, CO 80461



MALMAN
REAL ESTATE



Demographics

2025 Summary	1 mile	3 miles	5 miles
Population	4,190	6,540	7,253
Daytime Population	3,792	5,037	5,624
Households	1,889	2,726	2,988
Families	970	1,480	1,643
Avg HH Income	\$105,322	\$107,818	\$107,548
Median Age	39.0	37.9	37.9



For more information:

TAYLOR ROY
949-701-0164
taylor@malmancre.com