

**SUBLEASE AVAILABLE**

# 9 CENTENNIAL DRIVE

Peabody, Massachusetts

OFFICE/FLEX/WAREHOUSE

**21,804 SF Available**



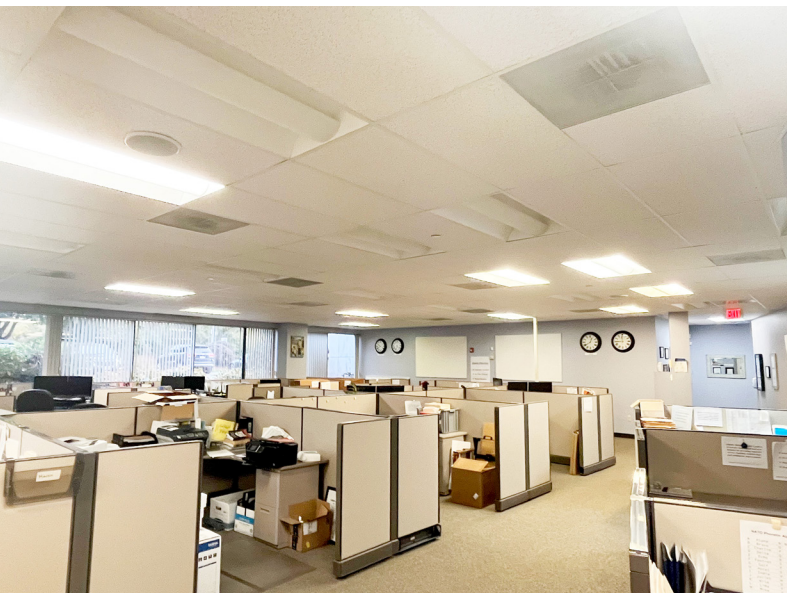
# 9 CENTENNIAL DRIVE

Peabody, Massachusetts



## SUBLEASE PREMISES SPECIFICATIONS

<b>AVAILABLE SF:</b>	21,804 SF
<b>TERM:</b>	Through 10/31/2026
<b>USE:</b>	Office/Flex/Warehouse
<b>CLEAR HEIGHT:</b>	12' - 14'
<b>LOADING:</b>	Direct Access Tailboard Height
<b>PARKING:</b>	Ample On-site Parking (>3/1,000 SF)

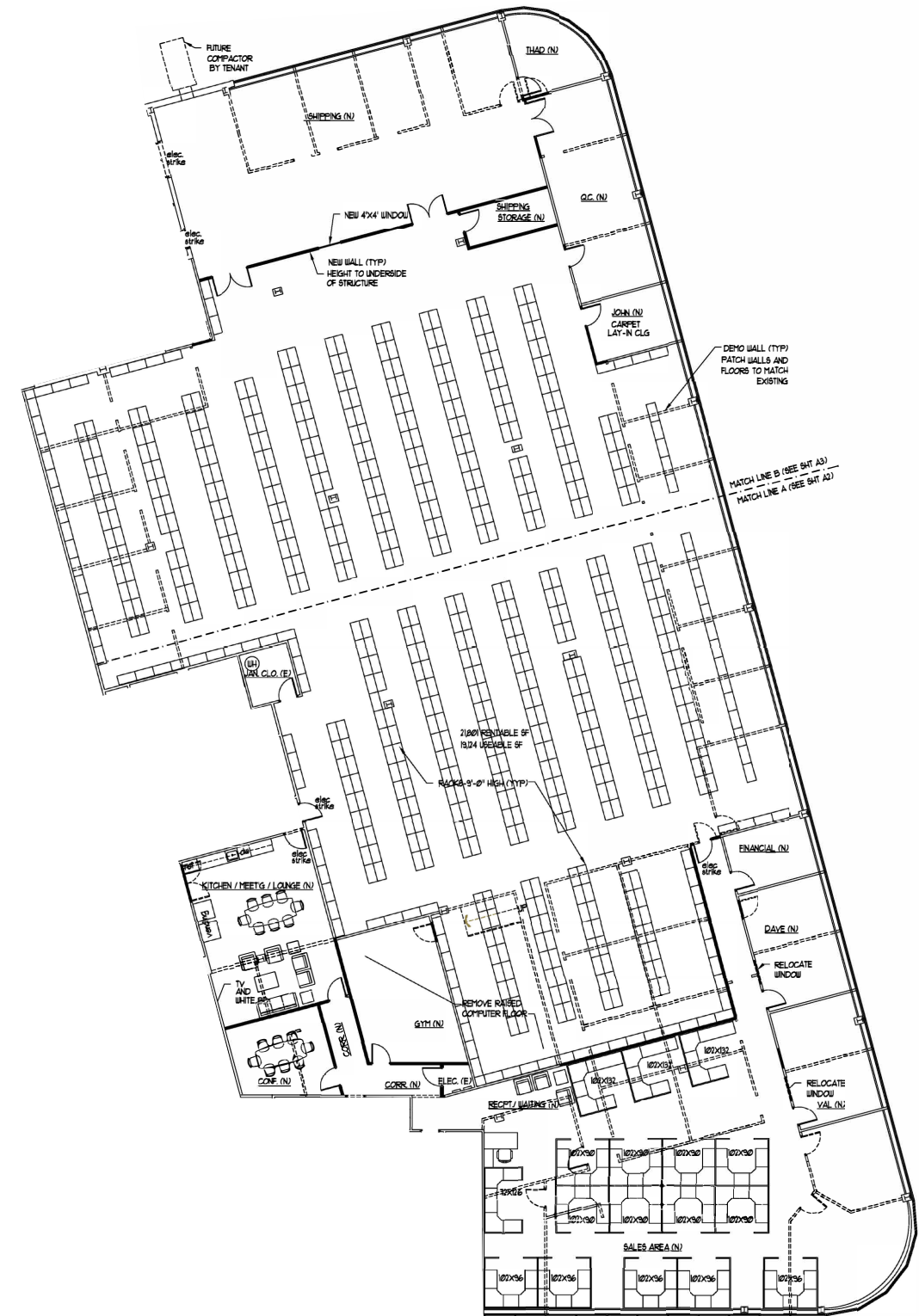


## BUILDING SPECIFICATIONS

<b>BUILDING SIZE:</b>	74,801 SF
<b>TYPE:</b>	Flex/R&D
<b>LAND:</b>	5.13 Acres
<b>HVAC:</b>	Full HVAC
<b>SPRINKLERS:</b>	Wet System Throughout
<b>COLUMN SPACING:</b>	25' x 30'



## FLOOR PLAN



SUBLEASE AVAILABLE | OFFICE/FLEX/WAREHOUSE

# 9 CENTENNIAL DRIVE

Peabody, Massachusetts



## CONTACT US TO ARRANGE A TOUR

### CHRIS CURLEY

Executive Vice President

617.457.3211

ccurley@hunnemanre.com

### KEN OPPENHEIM

Senior Vice President

617.457.3301

koppenheim@hunnemanre.com

### MIKE ALLEN

Vice President

617.457.3276

mallen@hunnemanre.com



303 Congress Street, Boston, MA 02210 617.457.3400 [www.hunnemanre.com](http://www.hunnemanre.com)

©2023 Hunneman. All rights reserved. All information has been obtained from sources believed reliable but no warranty or representation is verified for accuracy or completeness. Caution and independent investigation of property and information should be verified. Reliance on this information is at your own risk.