

# FOR LEASE

COMMERCE PARK SOUTHWEST  
12919 SOUTHWEST FRWY., SUITE 110



## BUILDING SPECIFICATIONS

<b>Address:</b>	12919 Southwest Frwy., Suite 110   Stafford TX, 77477
<b>Suite Size:</b>	1,955 SF
<b>Office:</b>	1,650 SF
<b>Warehouse:</b>	305 SF
<b>Truck Loading:</b>	(1) Grade-level door
<b>Clear Height:</b>	11'
<b>Overview:</b>	Close access to Beltway 8, Highway 59, and Highway 90. Located in business friendly Stafford, TX.



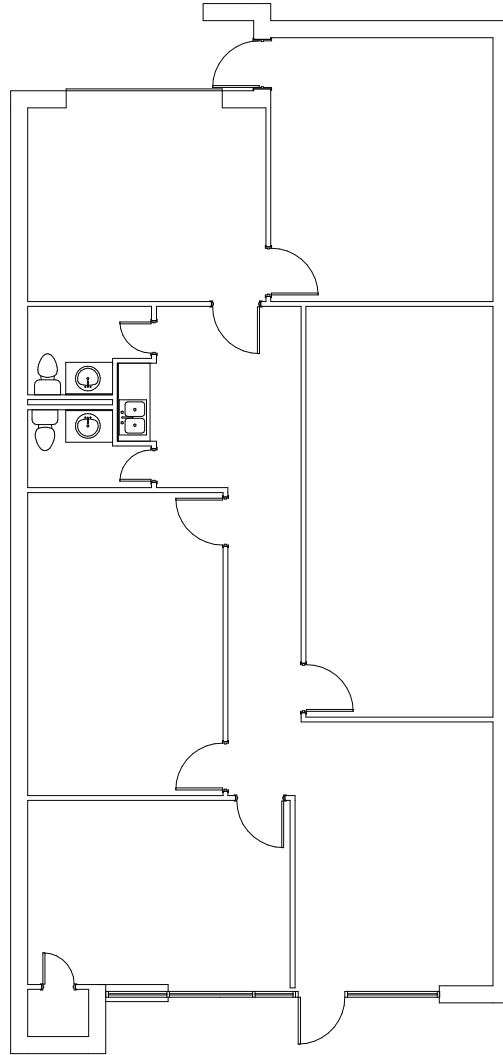
Owned By  
**maple**<sup>tree</sup>

Leasing By  
**STREAM**

Brittany Aaronson | 713.300.0311 | brittany.aaronson@streamrealty.com  
William Carpenter | 713.300.8891 | william.carpenter@streamrealty.com

# FOR LEASE

COMMERCE PARK SOUTHWEST  
12919 SOUTHWEST FRWY., SUITE 110



Owned By  
**maple**tree

Leasing By  
**STREAM**

Brittany Aaronson | 713.300.0311 | [brittany.aaronson@streamrealty.com](mailto:brittany.aaronson@streamrealty.com)  
William Carpenter | 713.300.8891 | [william.carpenter@streamrealty.com](mailto:william.carpenter@streamrealty.com)