



OFFICE BUILDING FOR LEASE

886 N HIGH STREET

COLUMBUS, OH 43215



A MEMBER OF CORFAC INTERNATIONAL

EXCLUSIVELY PRESENTED BY

ANDY MILLS, SIOR, CCIM

614.582.5521

amills@elfordrealty.com

KRISTY DANIEL, SIOR

614.560.7340

kdaniel@elfordrealty.com

ELFORD REALTY | CORFAC INTERNATIONAL

614.488.0000

Columbus, OH

www.elfordrealty.com

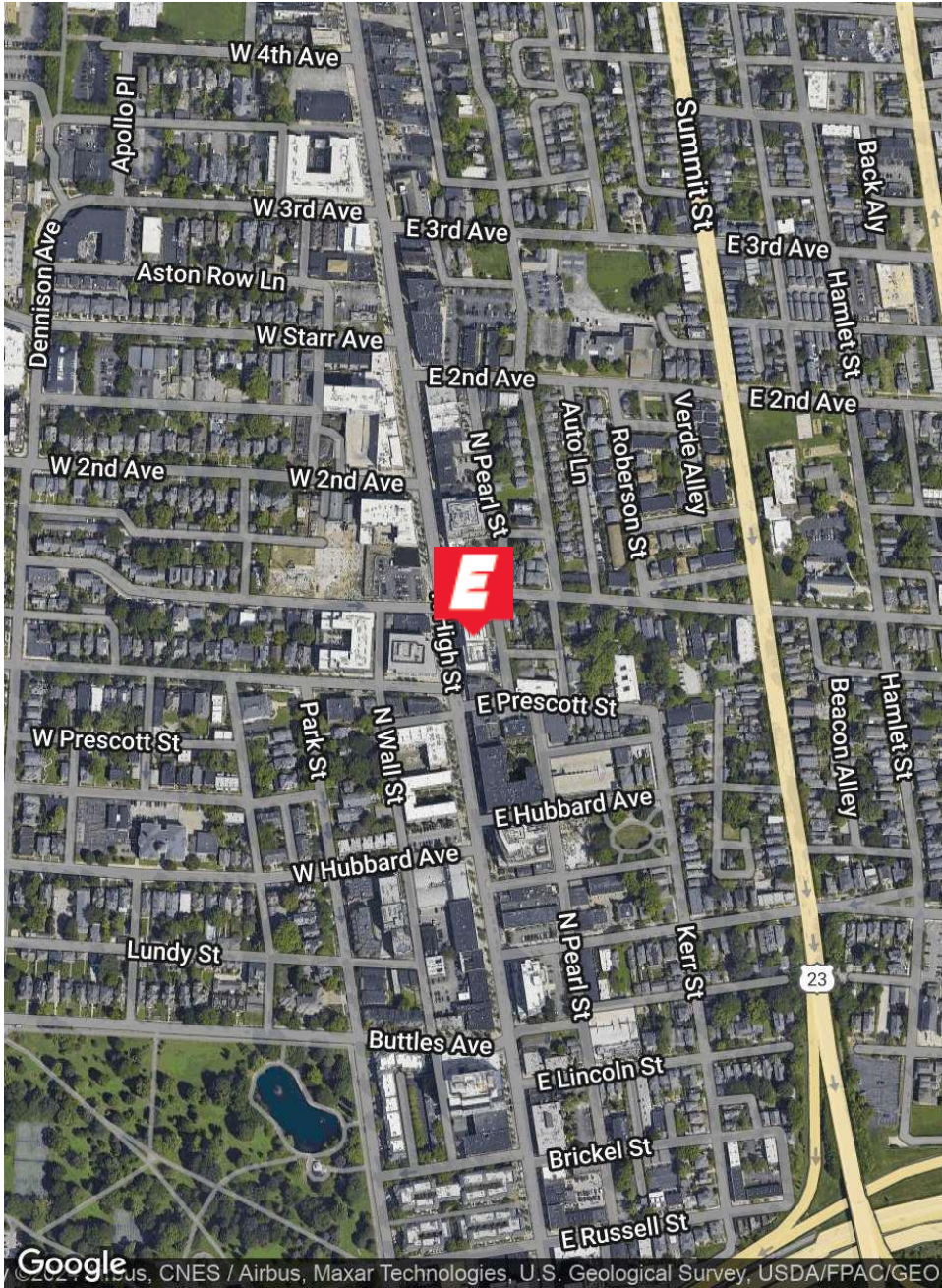


A MEMBER OF CORFAC INTERNATIONAL



EXECUTIVE SUMMARY

Elford Realty is pleased to present this Class A office space for lease within a 4-story mixed-use building. Situated in the heart of the Short North, this prime location is within walking distance to a variety of restaurants, retail stores, and hotels. The available space is located on the 2nd floor of the building consisting of approximately 15,602 RSF with an additional 501 SF of patio space. The space can be demised to approximately 6,119 RSF or 9,483 RSF for companies requiring a smaller footprint. With quality finishes, high ceilings, and a creative design this space is move-in ready. Parking options in the immediate area include The HUB Garage on E. Hubbard, The Castle Garage on 1st and High along with on-street parking. There are visitor parking spaces directly behind the building for short-term use.





\$23.50/SF NNN

ASKING PRICE

\$8.60/SF

OPEX

15,602 RSF TOTAL AVAILABLE

DIVISIBLE TO 6,119

OFFICE

PROPERTY TYPE

SHORT NORTH/COLUMBUS

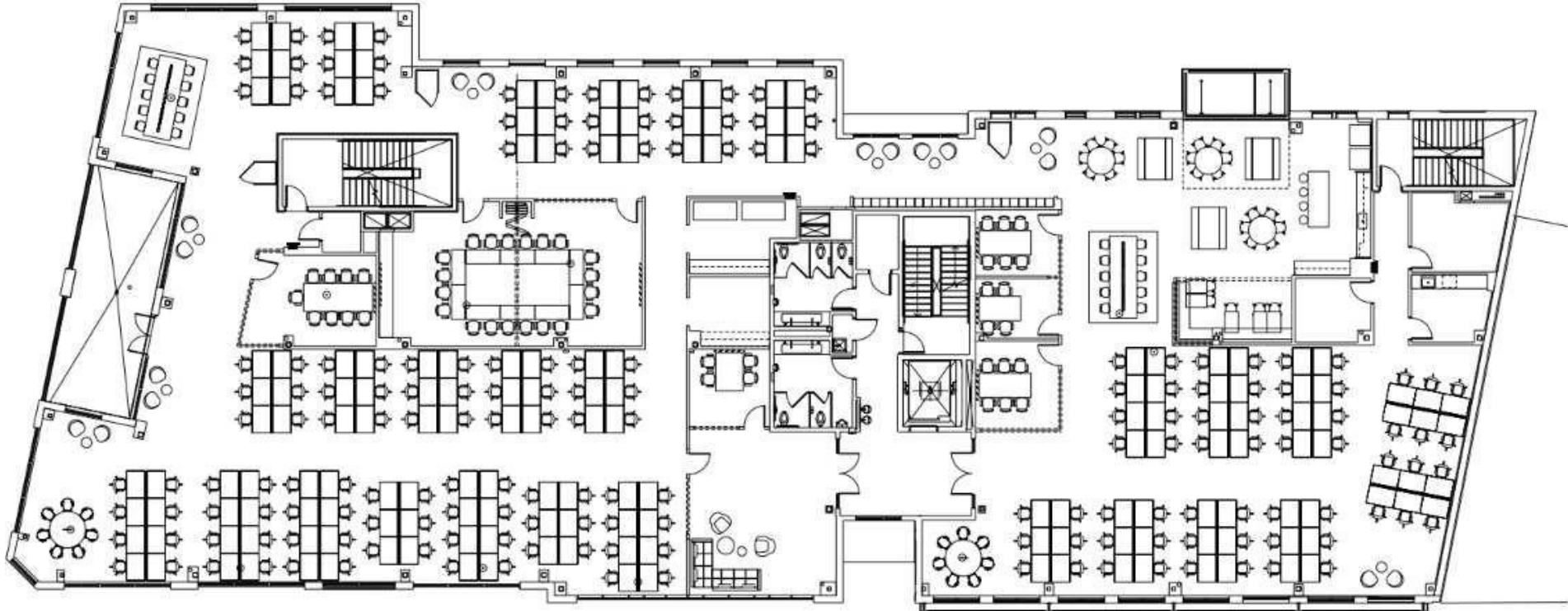
NEIGHBORHOOD/CITY

32

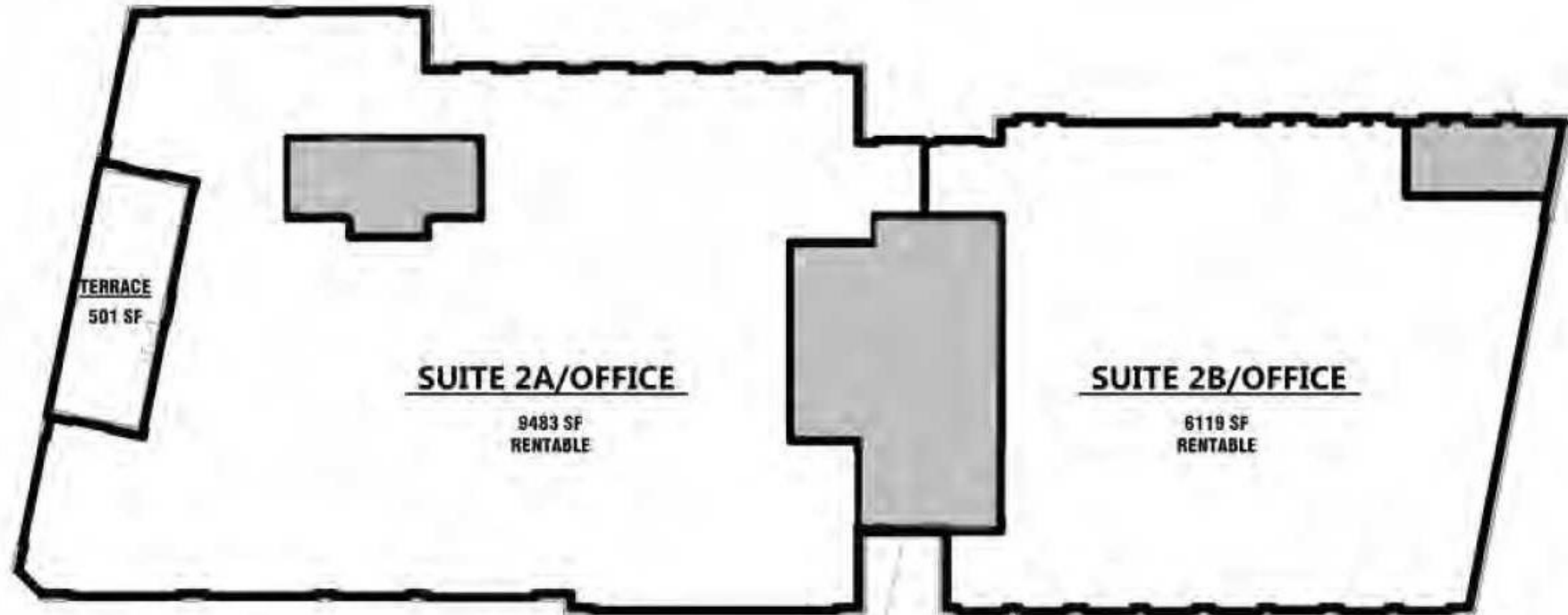
PARKING



FLOOR PLANS



FLOOR PLANS

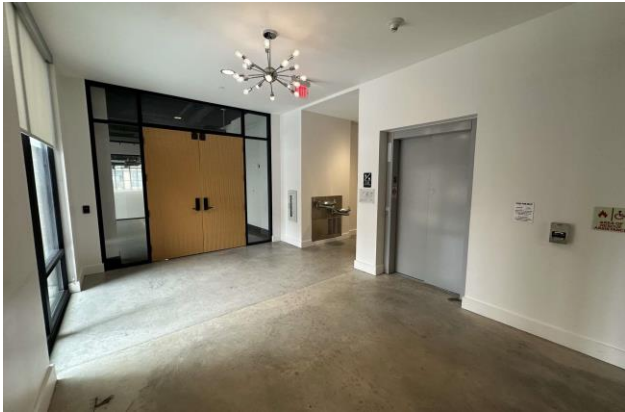
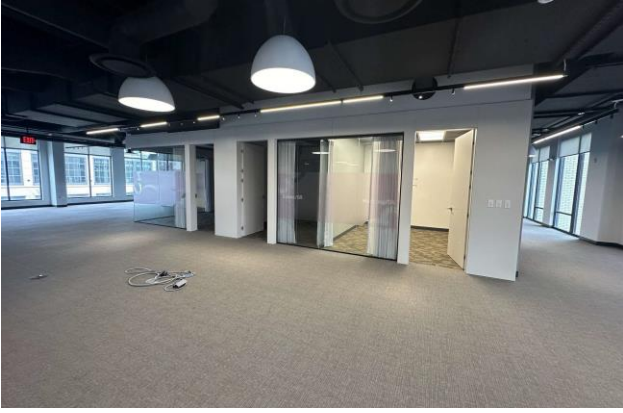


SECOND FLOOR AVAILABILITY: 15,602 sq.ft.

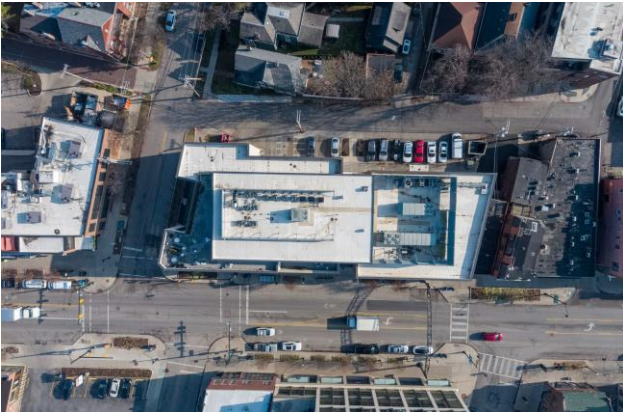
PROPERTY PHOTOS



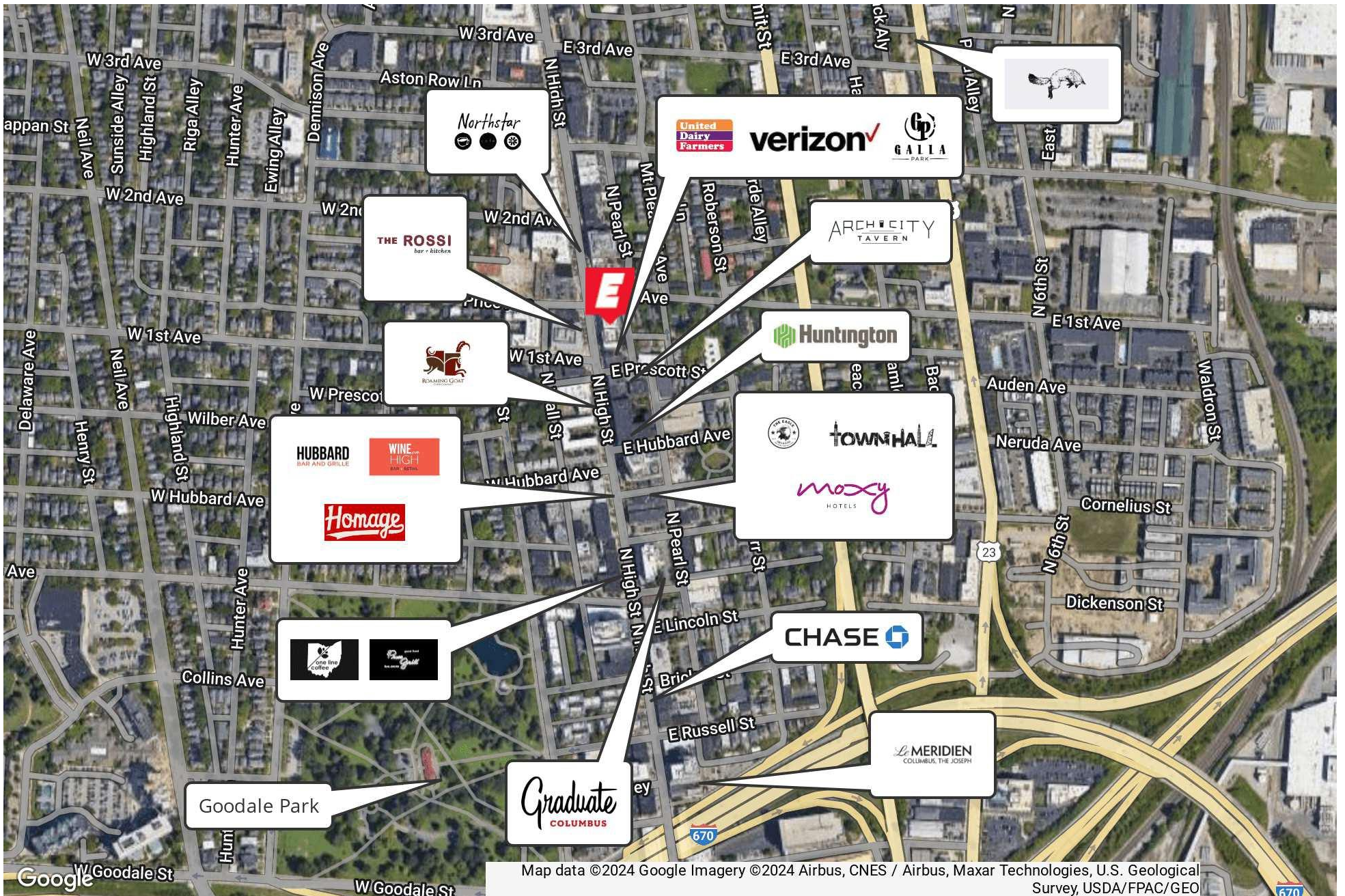
PROPERTY PHOTOS



PROPERTY PHOTOS



MARKET OVERVIEW MAP





AREA OVERVIEW

Columbus is one of the fastest-growing cities in the nation—thousands of people move to the Columbus area every year, making it the 14th largest city in the United States. With a reputation for its affordable cost of living, top-ranked infrastructure, and talented workforce, the region is one of the most dynamic and diverse in the country. With a vibrant mix of arts and culture, popular collegiate and professional sports teams, an entrepreneurial spirit, a revitalized downtown, and a diverse array of surrounding neighborhoods, Columbus is a great place to call home, raise a family, and do business. With 16 Fortune 1000 companies based in the area, as well as the state’s capital offices and The Ohio State University, the metro’s economy is sheltered from extreme economic swings with job growth consistently outpacing the national average, people from across the country are moving to Columbus, creating significant population growth.

*Source: <https://columbusregion.com/>

#1

City for tech
Workers

#2

City for college
Grads

#5

City for
Entrepreneurs and
Startups

NEIGHBORHOOD OVERVIEW

The art and soul of the city, the Short North District is unique and woven into the culture of Columbus. With its historic lighted arches lining High Street, the Short North got its name back in the day because of its position north of Downtown Columbus and short of the University District. Today, it's home to 300+ businesses, many of which are locally owned or headquartered, like restaurants, boutiques, coffee shops, DIY food and fun experiences, rooftop bars, and entertainment options. Foodies will love Columbus Food Adventures tours, and art enthusiasts are sure to note the eye-catching street art and sculptures spread throughout the neighborhood.

*Source: <https://www.experiencecolumbus.com/neighborhoods/short-north/>

AREA AMENITIES

LOWER.COM FIELD

Soccer-specific stadium in Columbus, Ohio, United States. It serves primarily as the home stadium of the Columbus Crew of Major League Soccer.

CONVENTION CENTER

\$140 mil expansion & renovation of the Convention Center completed in 2017 created 1.8 mil SF facility that includes 3 ballrooms, & 74 meeting rooms.

HUNTINGTON PARK

Home stadium of the Columbus Clippers, a AAA affiliate of the Cleveland Indians since 2009, that seats over 10,000 fans

COLUMBUS COMMONS

Six-acre park located in the center of Downtown Columbus that functions as a gathering space, hosting over 200 free events every year

NATIONWIDE ARENA

684,000 total SF Arena that is home to the NHL's Columbus Blue Jackets, as well as the host of several shows and concerts that come to the area

SHORT NORTH

A hip, culture-rich area centered on N. High St. featuring Contemporary galleries, unique restaurants and bars, & several of the area's popular small businesses

AREA AMENITIES



LOWER.COM FIELD



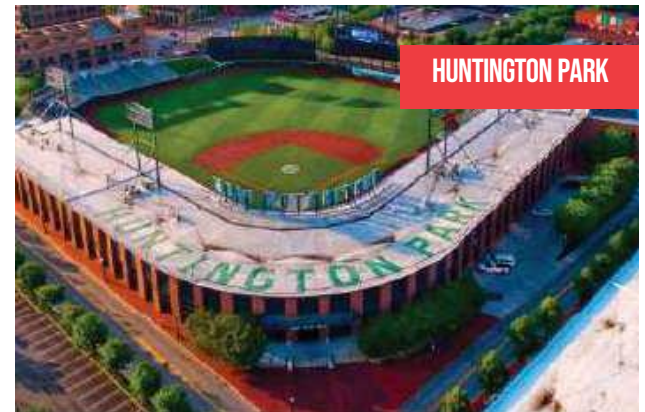
COLUMBUS COMMONS



NATIONWIDE ARENA



SHORT NORTH



HUNTINGTON PARK

EDUCATION

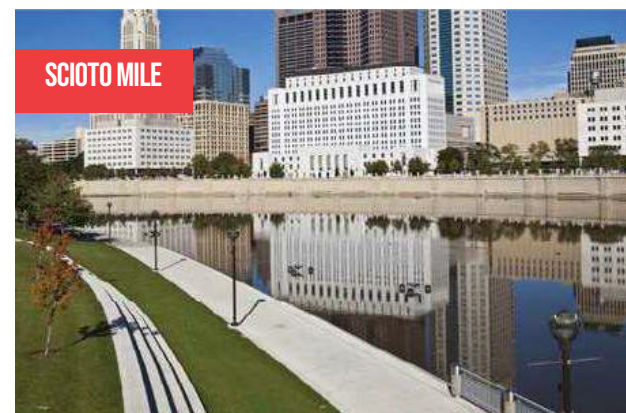
The Columbus Region has one of the highest concentrations of higher education in the nation, with 52 college and university campuses, a total enrollment of more than 134,000 students and 22,000 annual graduates. Of the colleges in the region, two are leading private research institutions, allowing Columbus to attract some of the best and brightest talent in the country. The range of educational opportunities contributes to Columbus' talented and diverse labor force.

The top colleges in the Columbus area are The Ohio State University, Columbus State Community Colleges, and Otterbein University, with enrollment totaling 92,000 +.

*Source: <https://columbusregion.com/>

AREA ATTRACTIONS

Columbus has an array of entertainment to offer. From the unique restaurants and bars in the Short North to the outdoor concerts performed at the Columbus Commons and Express Live concert venue, to Gallery Hop and the North Market, featuring local artistic talent and food vendors, Columbus has something for everyone. The city hosts special events and festivals such as Comfest and The Arnold Classic, as well as several sports teams such as The Ohio State Buckeyes, Columbus Crew, and the Columbus Blue Jackets, giving residents and visitors something to do year-round. Columbus also features many parks and museums including the Columbus Museum of Art, COSI, the world-famous Columbus Zoo and Aquarium, the Scioto Mile, and the Franklin Park Conservatory.



POPULATION OVERVIEW

The Columbus Region is a dynamic 11-county metropolitan area in the midst of unprecedented population growth. Centrally located between Chicago and New York, the Columbus Region boasts the greatest market access of any major metro— with 46% of the United States population within a 10-hour drive.

With one of the youngest and most-educated populations in the country – the median age is 35.9 and 36% of residents 25+ hold a bachelor’s degree or higher. The Region offers a steady pipeline of young talent with one of the highest concentrations of college students in the nation.

*Source: <https://columbusregion.com/>

	POPULATION			
	2021	2022	2023	2024
Columbus	1,666,000	1,687,000	1,708,000	1,727,000





OFFICE BUILDING FOR LEASE

886 N HIGH STREET

COLUMBUS, OH 43215



A MEMBER OF CORFAC INTERNATIONAL