



**DGNY**  
Commercial

**14 MAPLE STREET, PORT WASHINGTON, NY**

**FOR LEASE: Office/Dental/Medical Space  
±850 SF - Suite #101. Immediate Occupancy.**



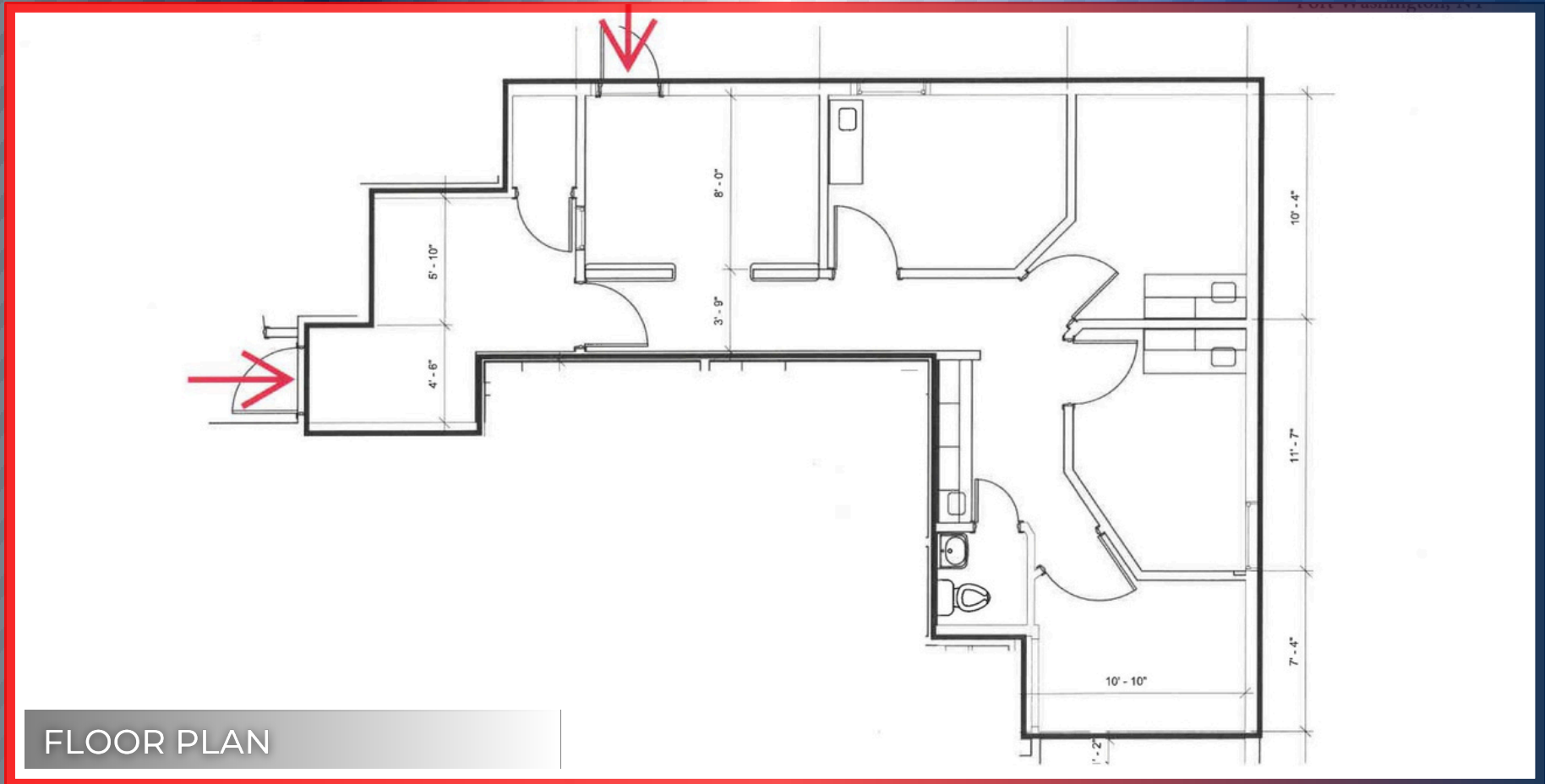
**Marty Miller**

Licensed Salesperson

813.505.2451

[martin.miller@dgnyccommercial.com](mailto:martin.miller@dgnyccommercial.com)

# FOR LEASE: Office/Dental/Medical Suite



## Property Highlights

- **±850 SqFt OFFICE**
- **WAITING AREA**
- **RECEPTION**
- **4 OFFICES**

## Additional Specifications:

- 2 BLOCKS FROM THE LIRR
- HANDICAP ACCESSIBLE
- MUNICIPAL PARKING ACROSS THE STREET
- SEPARATE TENANT METERS FOR ELECTRIC
- GAS INCLUDED

# 14 MAPLE STREET, PORT WASHINGTON, NY

FOR LEASE: ±850 SF Office/Dental/Medical Space. Suite 101. Immediate Occupancy.



For more information on this exclusive, contact:

**Marty Miller**  
Licensed Salesperson  
813.505.2451  
martin.miller@dgnyccommercial.com



©2024 DGNY Commercial, LLC. The information contained in the communication is strictly confidential. All rights reserved. This information has been obtained from sources believed to be reliable, but has not been verified. No warranty or representation, express or implied, is made as to the accuracy or completeness of the information contained herein and same is submitted subject to errors, omissions, change of price, rental or other conditions, withdrawal without notice and to any special listing conditions imposed by the property owner(s).