



## 201 Schuylkill Medical Plaza Pottsville, PA 17901

### Property Features

- 2,485 +/- SF
- Medical Office Condominium
- Located in Downtown Pottsville
- Across from Lehigh Health Hospital
- Part of Medical Condo with multiple services
- Excellent visibility
- Easy access to local community
- Ambulatory building access
- Asking Price \$450,000

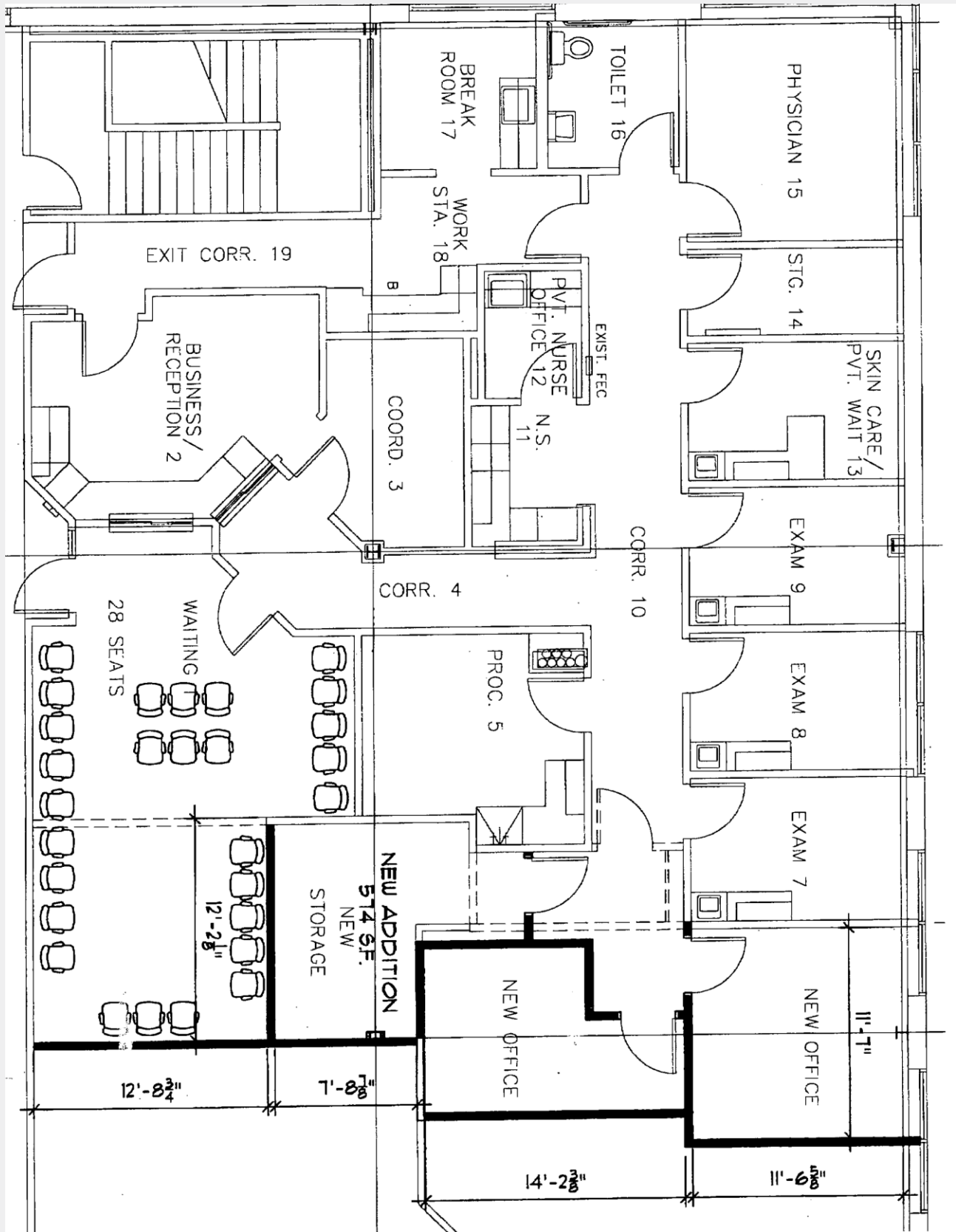


For more information:

**John Buccinno, CCIM SIOR**

610 370 8508 • [jbuccinno@naikeystone.com](mailto:jbuccinno@naikeystone.com)

Floor Plan  
201 Schuylkill Medical Plaza



## DESCRIPTION

### Medical Office Building

Avail (SF):	2,485 + / - S.F.
Construction:	Block and Brick
Floor:	Poured concrete
Roof:	Truss / Shingle
Lighting:	Florescent
HVAC:	(2) Five ton units
Electrical:	200 Amp 110v
Ceiling:	9' Clear
Parking:	Common Parking
Services	PPL – Natural Gas, PPL - Electric
Water/Sewer:	Both Public

## PROPERTY INFORMATION

Property Type:	Professional Medical Office
Zoning:	Commercial Business District
Building Size:	40,000 +/- SF
Lot Size:	4.5 +/- Acres

