

Morrison Creek Drive

Nine Parcels of Industrial Land Available
Build-To-Suit Opportunity for Sale or Lease
Power Inn Submarket

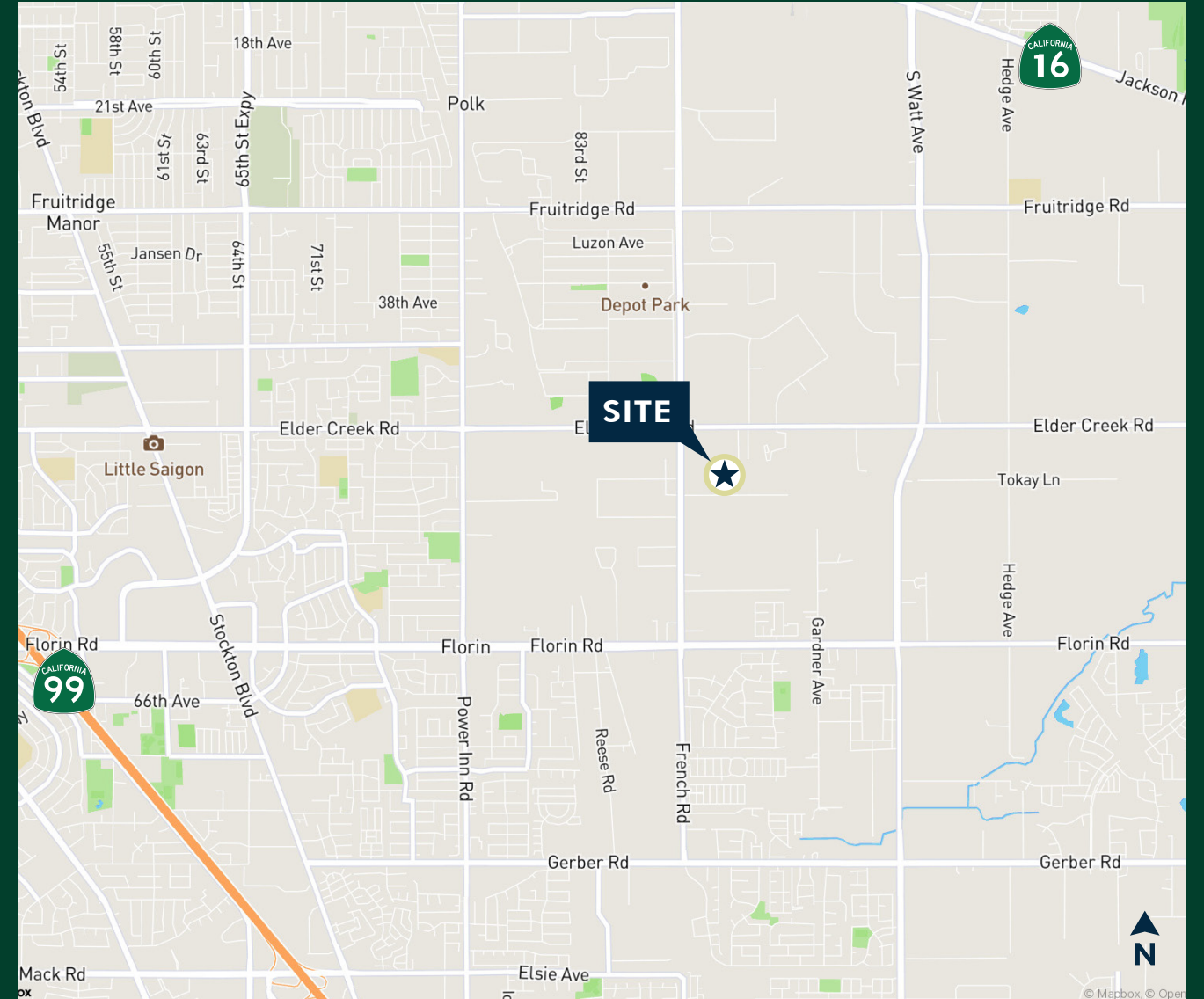
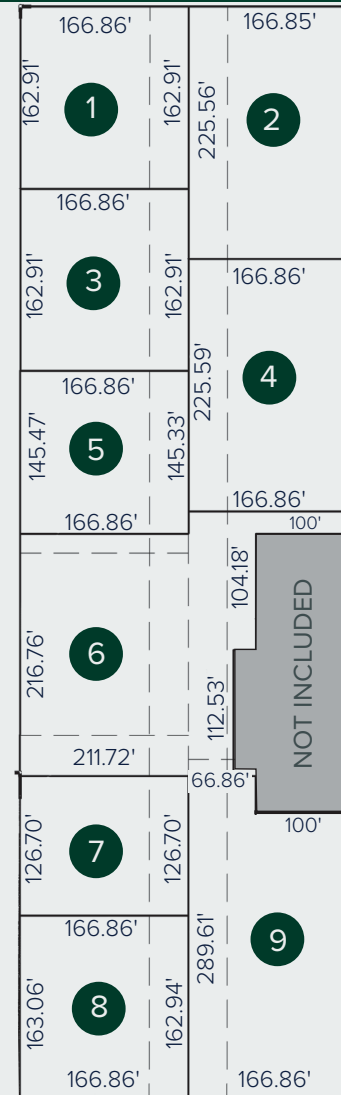
PROPERTY HIGHLIGHTS
TOTAL SIZE: ±6.83 acres, 9 parcels
ZONING: M-2S Heavy Industrial
FEATURES:
• Existing Curbs/Gutters, Sidewalk
• City of Sacramento



Property Details

±6.83 Acres Total, 9 Parcels

1	±0.62 Acres	064-0160-001
2	±0.86 Acres	064-0160-007
3	±0.62 Acres	064-0160-002
4	±0.86 Acres	064-0160-008
5	±0.56 Acres	064-0160-019
6	±1.18 Acres	064-0160-020
7	±0.49 Acres	064-0160-021
8	±0.62 Acres	064-0160-006
9	±1.02 Acres	064-0160-016



Contact Us

Zac Sweet, SIOR

Senior Vice President
C: 916 717 4768
zac.sweet@cbre.com
Lic. 01352800

Courtney Lee

Associate
C: 916 906 5544
courtney.lee@cbre.com
Lic. 02031694

Stacy Ladd

Senior Asset Manager, Buzz Oates
T: 916 379 3847
stacyladd@buzzoates.com
Lic. 01214064

© 2025 CBRE, Inc. All rights reserved. This information has been obtained from sources believed reliable but has not been verified for accuracy or completeness. CBRE, Inc. makes no guarantee, representation or warranty and accepts no responsibility or liability as to the accuracy, completeness, or reliability of the information contained herein. You should conduct a careful, independent investigation of the property and verify all information. Any reliance on this information is solely at your own risk. CBRE and the CBRE logo are service marks of CBRE, Inc. All other marks displayed on this document are the property of their respective owners, and the use of such marks does not imply any affiliation with or endorsement of CBRE. Photos herein are the property of their respective owners. Use of these images without the express written consent of the owner is prohibited.