

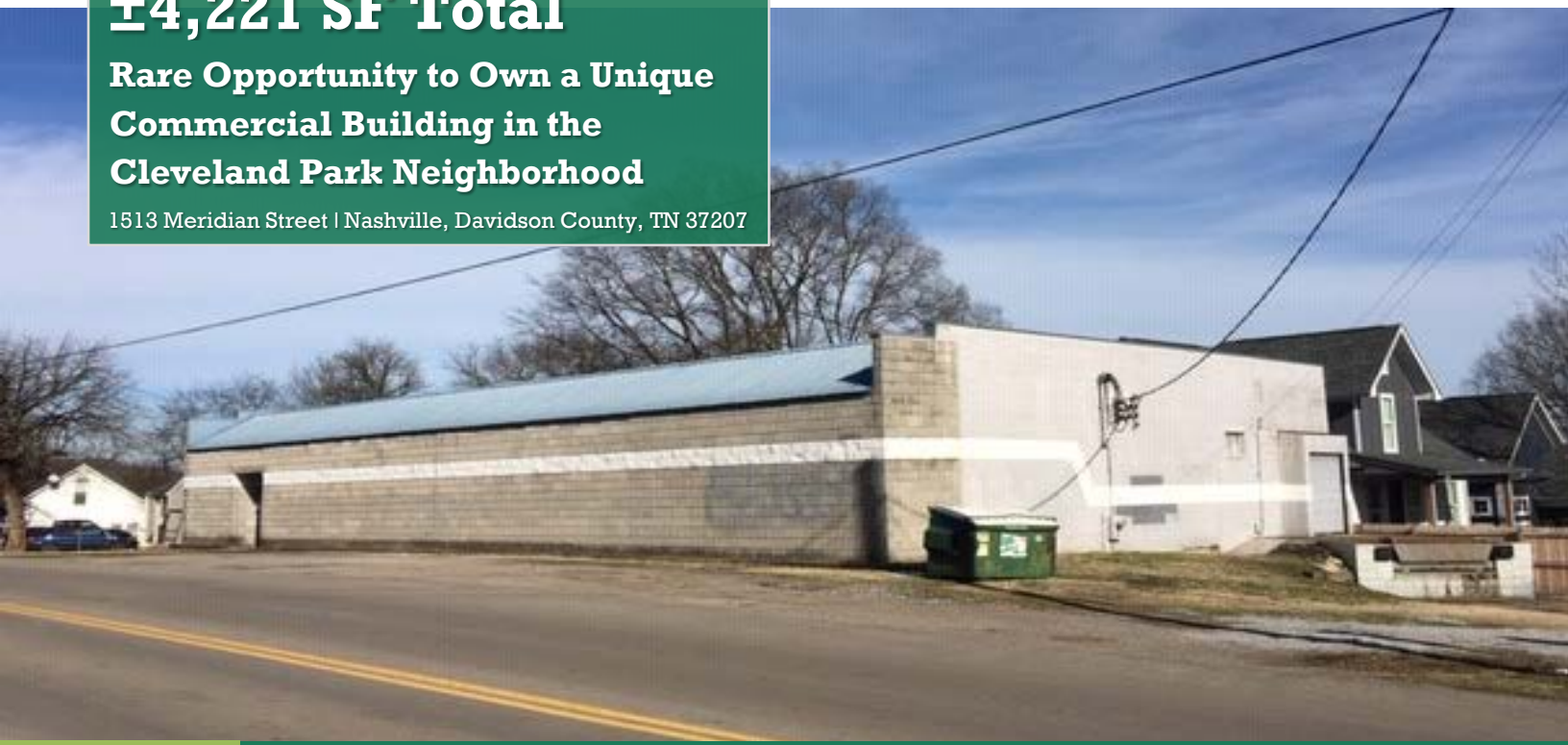
FOR SALE OR LEASE

±4,221 SF Total

Rare Opportunity to Own a Unique
Commercial Building in the
Cleveland Park Neighborhood

1513 Meridian Street | Nashville, Davidson County, TN 37207

Established 1962
**Chas.
Hawkins
Company
Inc.**
COMMERCIAL REAL ESTATE
CORFAC
International



HIGHLIGHTS:

±4,221 SF

±0.30 Acre

Sale Price: Please call for pricing **Lease Rate:** \$14 / SF NNN

Zoned Rs5 – commercial uses permitted

Loading dock platform with leveler

New roof

815 feet from Rochford Realty's 158- unit Meridian
Park development

- [Link to more information](#)

1 mile from I-65 & Ellington Pkwy off Trinity Lane



Bo Rainey
Vice President
Cell: 615.364.6933
borainey@chco.com

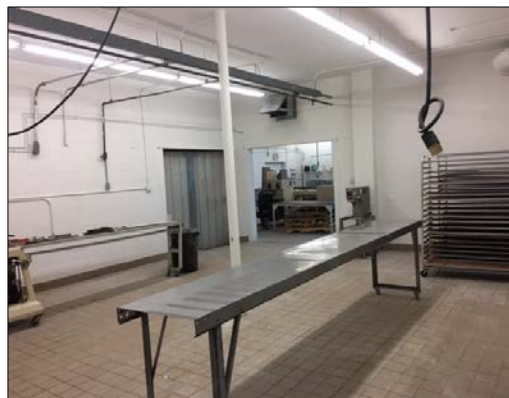
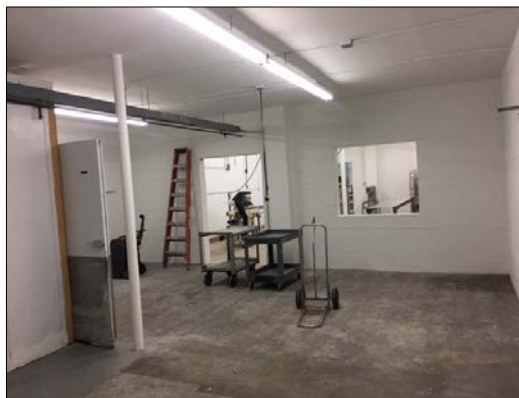
Exclusively Listed by:
Chas. Hawkins Co., Inc. / CORFAC International
760 Melrose Avenue, Nashville, TN
Telephone: 615.256.3189 Facsimile: 615.254.4026
www.chashawkins.com www.corfac.com

FOR SALE OR LEASE

±4,221 SF Total

1513 Meridian Street | Nashville, Davidson County, TN 37207

Property Aerial



Bo Rainey
Vice President
Cell: 615.364.6933
borainey@chco.com

Exclusively Listed by:
Chas. Hawkins Co., Inc. / CORFAC International
760 Melrose Avenue, Nashville, TN
Telephone: 615.256.3189 Facsimile: 615.254.4026
www.chashawkins.com www.corfac.com