

1330 ENSELL ROAD
LAKE ZURICH



*O'Leary
Realty
Corp.*

TIM O'LEARY, SIOR, CCIM
Managing Broker
tim@olearyrealty.com
847-438-1948

Officers of this company have an ownership interest in this property. All information is subject to verification and no liability for omission is assumed. Price subject to change and listing may be withdrawn without notice.

6,420 SF CONDO
FOR SALE

1330 ENSELL ROAD LAKE ZURICH

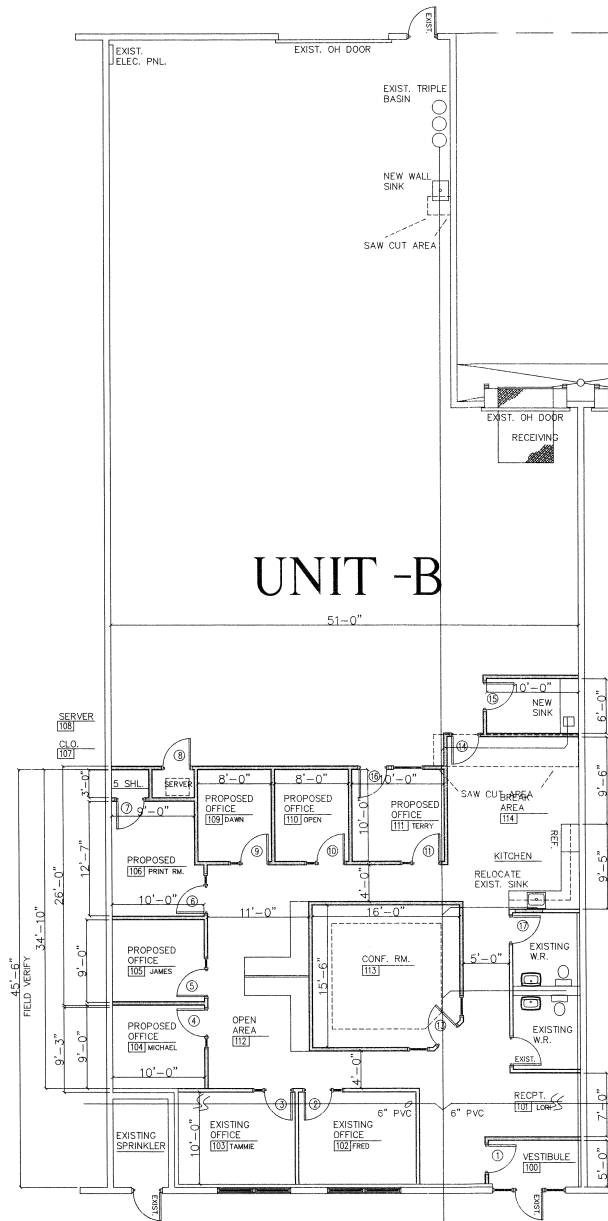
| | |
|-----------------------|---|
| BUILDING SIZE | 32,00 SF |
| AVAILABLE SIZE | 6,420 SF |
| OFFICE | 2,290 SF |
| CLEAR HEIGHT | 22' 6" |
| LOADING | <ul style="list-style-type: none">• 12' x 14' drive in door• Under cover truck level dock with leveler |
| POWER | 480v, 200 amps 120/240 |
| TAXES | \$19,039.24 |
| PARKING | 10 spaces |
| POSSESSION | 01/01/2025 (current lease ends 12/31/2024) |
| PRICING | |



HIGHLIGHTS

- Located in the Lake Zurich industrial park
- Attractive office build-out with 8 private offices, conference room and kitchen/break room
- Fully sprinklered
- 10 car parking
- Floor drains with Triple basin drain

1330 ENSELL ROAD LAKE ZURICH



1330 ENSELL ROAD LAKE ZURICH

