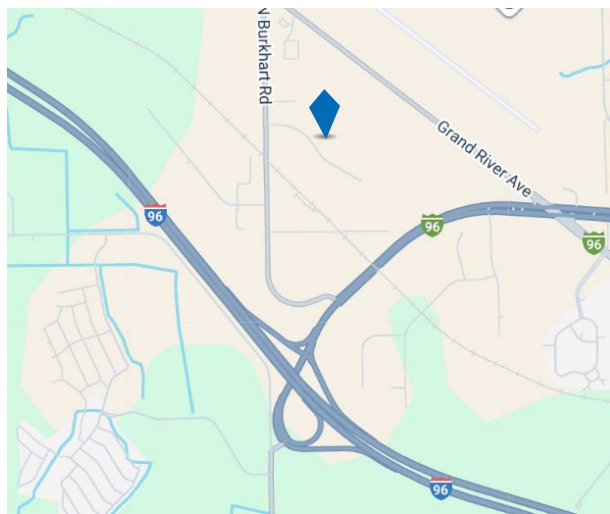




FOR LEASE

1870 Hydraulic

Howell, MI 48855



For Lease

- 19,950-34,050 Square Feet
- 19,950 Square Feet Available Immediately
- Located Within One Mile of I-96 and M-59 Interchange
- May be Duplexed with Suite Sizes of 14,325 SF and 19,950 SF
- Two truckwells with load levelers
- Five 12'x14' Drive-In Overhead Doors

For information, please contact:

Daniel Flynn

Director

t 248-871-2291

Daniel.Flynn@nmrk.com

Geoff Hill

Executive Managing Director

t 248-350-1492

Geoff.Hill@nmrk.com

39400 Woodward Ave., Suite 100
Bloomfield Hills, MI 48304



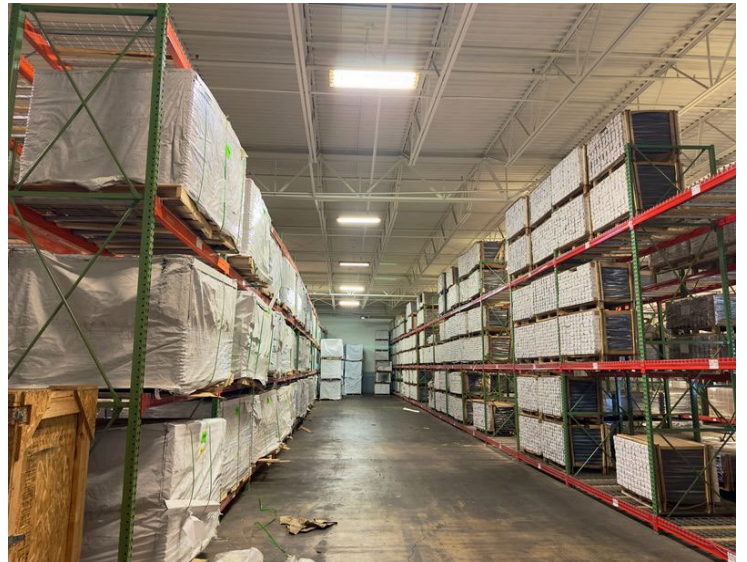
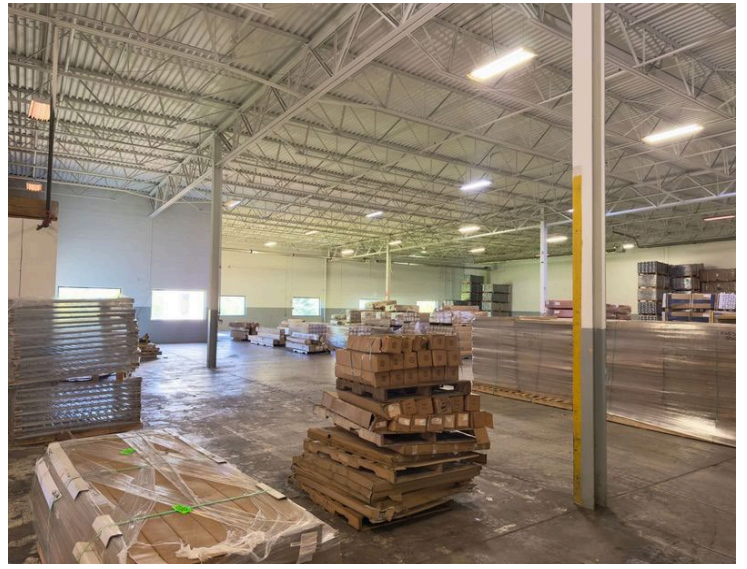
nmrk.com

NEWMARK

Licensed in Michigan as Newmark Real Estate

The information contained herein has been obtained from sources deemed reliable but has not been verified and no guarantee, warranty or representation, either express or implied, is made with respect to such information. Terms of sale or lease and availability are subject to change or withdrawal without notice.

1870-1880 Hydraulic, Howell, MI 48855



NEWMARK

Lease

1870 Hydraulic Dr Howell, MI 48855-7309



Pricing Information:

Lease Rate Range:	\$7.50-\$7.50 NNN
Lease Type:	NNN
Sale Price:	N/A
Price per SF:	N/A
Real Estate Taxes psf:	\$0.90
Building Insurance psf:	\$0.00
CAM psf:	N/A

Property Details:

Total Building Area:	34,050 sf
Min/Max Available:	19,950 - 34,050 sf
Office Area:	2,700 sf
Property Type:	General Industrial
Tenancy:	Multi-tenant
Year Built:	01/01/2001
Year Renovated:	
Zoning:	Industrial
Site/Parcel Area:	2.90 acres

Parcel ID:	4706-28-100-061 & 062
Parking Description:	
Rail Served:	No
Cranes:	No
Heat:	Radiant
Clear Height Min/Max:	20.0'
Grade/Dock Doors:	4 / 2
Sprinkler:	Yes
Power:	1,000 amps, 240 volt

Comments:

34,050sf with 19,725sf available immediately. 2 truckwells with load levelers and (5) 12x14 grade level doors. Located within one mile of I-96 and M-59 interchange. May be duplexed with suite sizes of 14,325sf and 19,725sf.

Dan Flynn

248.871.2291

Daniel.Flynn@nmrk.com

Geoffrey Hill

248.350.1492

Geoff.Hill@nmrk.com

